

BUPRESTIS CHRYSIS.

CHARACTER GENERICUS.

Antennæ setaceæ, subserratæ.

Caput dimidium intra thoracem retractum.

Corpus crassum, postice subacuminatum.

CHARACTER SPECIFICUS, &c.

Buprestis aureo-viridis nitidissima, thorace punctis numerosis impressis, sterno porrecto, elytris castaneis.

Buprestis Chrysis. B. elytris serrato-tridentatis castaneis, sterno conico porrecto.

Fabr. sp. ins. p. 275.

Confundi non raro solet elegans hæc species cum *Buprestide sternicorni*, seu aureo-viridi; a qua tamen insigniter discrepat, non modo majori mole, verum etiam colore elytrorum, non aureo-viridium, sed e castaneo læte rubentium. Tabula ostendit veram insecti magnitudinem. In India generatur *Buprestis Chrysis*.

BUPRESTIS CHRYSIS

... ..

... ..

... ..

... ..

... ..

... ..

... ..

... ..

... ..

... ..

... ..

... ..

... ..

... ..

... ..

... ..

... ..

... ..

... ..

EXHIBITIS CURTIS

EXHIBITIS CURTIS

EXHIBITIS CURTIS

EXHIBITIS CURTIS

EXHIBITIS CURTIS

EXHIBITIS CURTIS

EXHIBITIS CURTIS

EXHIBITIS CURTIS

EXHIBITIS CURTIS

EXHIBITIS CURTIS

EXHIBITIS CURTIS

EXHIBITIS CURTIS

EXHIBITIS CURTIS

EXHIBITIS CURTIS

EXHIBITIS CURTIS

EXHIBITIS CURTIS

EXHIBITIS CURTIS

EXHIBITIS CURTIS

EXHIBITIS CURTIS

EXHIBITIS CURTIS

EXHIBITIS CURTIS

EXHIBITIS CURTIS

EXHIBITIS CURTIS

EXHIBITIS CURTIS

EXHIBITIS CURTIS

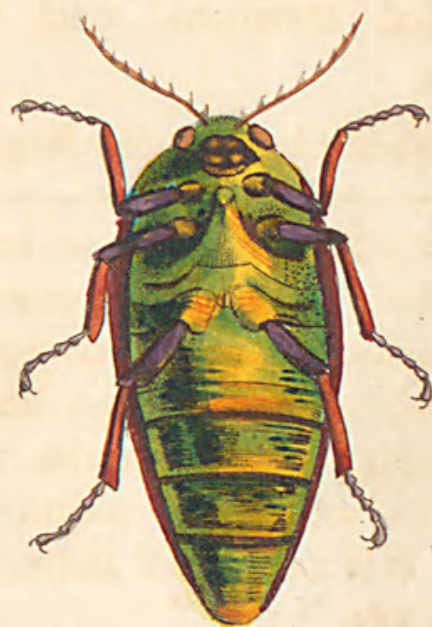
EXHIBITIS CURTIS

EXHIBITIS CURTIS

EXHIBITIS CURTIS

EXHIBITIS CURTIS

EXHIBITIS CURTIS



Drawn Engraved & Published by R. P. B. 1831

THE
CHESNUT-SHELLED INDIAN
BUPRESTIS.

GENERIC CHARACTER.

Antennæ setaceous, slightly serrated.

Head half withdrawn beneath the thorax.

Body thick, slightly pointed behind.

SPECIFIC CHARACTER, &c.

Brilliant gold-green *Buprestis*, with the thorax marked by numerous impressed points, porrected sternum, and chesnut wing-sheaths.

Chesnut-shelled Green-gold *Buprestis*.

The present most elegant species has sometimes been confounded with the *Buprestis sternicornis* or smaller green-gold *Buprestis*, from which however it strikingly differs, not only in superior size, but also in the colour of the elytra or wing-sheaths, which in the present insect are of a beautiful reddish chesnut instead of gold-green. It is a native of India, and is represented in its natural size.



Shaw, George. 1813. "Buprestis chrysis, The Chestnut-shelled Indian Buprestis [Pl. 1060]." *The Naturalist's Miscellany* 24(CCLXXXVI), -. <https://doi.org/10.5962/p.322339>.

View This Item Online: <https://www.biodiversitylibrary.org/item/296719>

DOI: <https://doi.org/10.5962/p.322339>

Permalink: <https://www.biodiversitylibrary.org/partpdf/322339>

Holding Institution

Museums Victoria

Sponsored by

Atlas of Living Australia

Copyright & Reuse

Copyright Status: Public domain. The BHL considers that this work is no longer under copyright protection.

This document was created from content at the **Biodiversity Heritage Library**, the world's largest open access digital library for biodiversity literature and archives. Visit BHL at <https://www.biodiversitylibrary.org>.