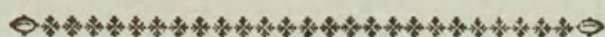


## PHALÆNA BOREAS.



### CHARACTER GENERICUS.

*Antennæ* setacæ, a basi ad apicem sensim attenuatæ.

*Alæ* (sedentis) sæpius deflexæ. (Volatu nocturno.)

*Lin. Syst. Nat.* p. 808.

### CHARACTER SPECIFICUS, &c.

PHALÆNA alis caudatis cinereis fusco variis, primoribus punctis duobus, posterioribus unico fenestratis.

*Lin. Syst. Nat. Gmel.* p. 2404.

PHALÆNA BOREAS.

*Cram.* t. 70. f. B.

PHALÆNA BOREAS.

*Fabr. spec. ins.* 2. p. 170.

---

In America Australi reperta sedem sibi jure vindicat hæc Phalæna inter rarissimas sui generis. Magnitudinem naturalem ostendit tabula.

THE NEW YORK

OF THE CITY OF NEW YORK

IN THE YEAR 1880

THE NEW YORK

OF THE CITY OF NEW YORK

IN THE YEAR 1880

OF THE CITY OF NEW YORK

IN THE YEAR 1880

THE NEW YORK

OF THE CITY OF NEW YORK

IN THE YEAR 1880

OF THE CITY OF NEW YORK

IN THE YEAR 1880

THE NEW YORK

OF THE CITY OF NEW YORK

IN THE YEAR 1880

OF THE CITY OF NEW YORK

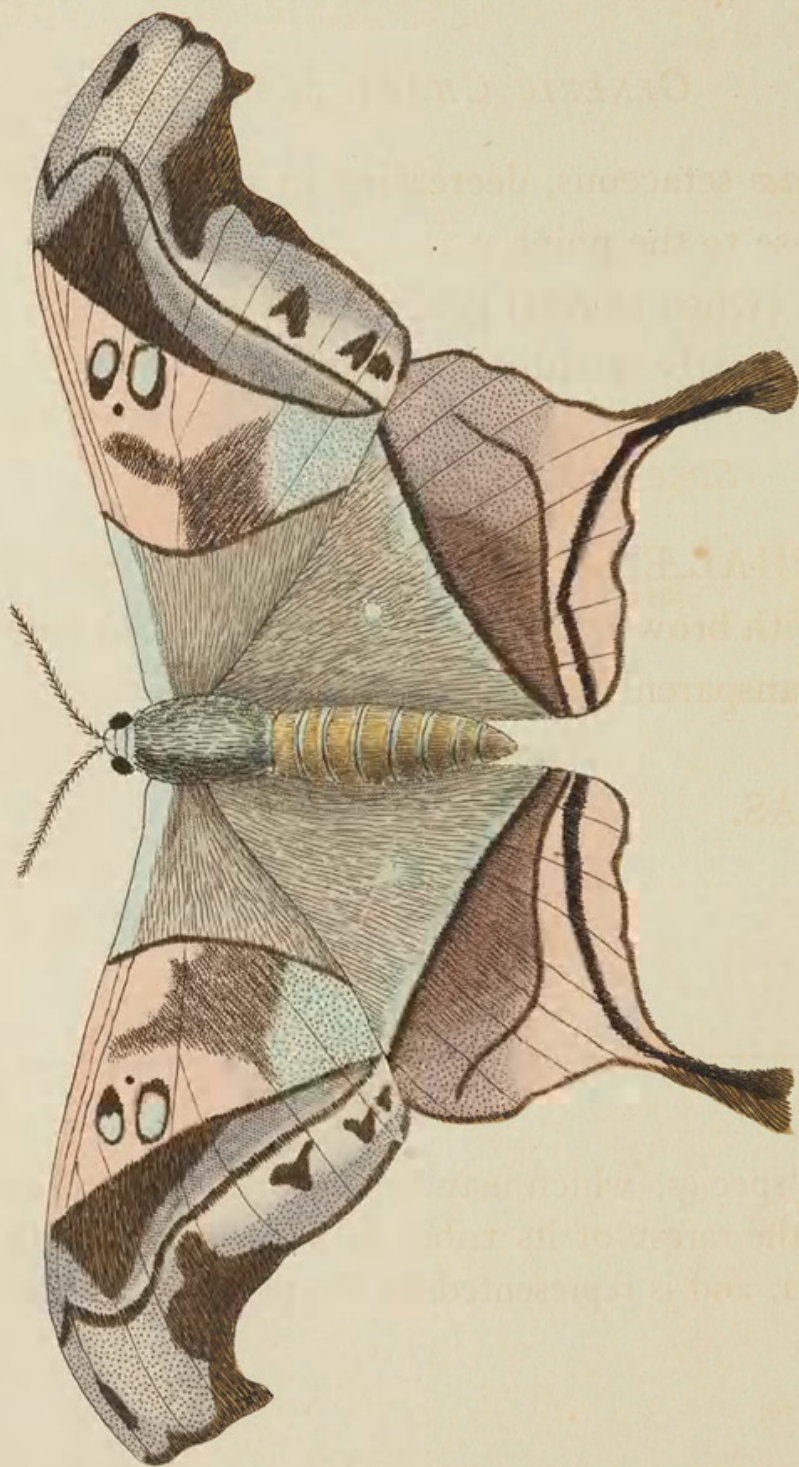
THE NEW YORK

OF THE CITY OF NEW YORK

IN THE YEAR 1880









## BOREAS.



### GENERIC CHARACTER.

*Antennæ* setaceous, decreasing in size from the base to the point.

*Wings* (when at rest) generally deflected.

*Flight* mostly nocturnal.

### SPECIFIC CHARACTER, &c.

Grey PHALÆNA, with tailed wings variegated with brown, the upper pair marked by two transparent spots, the lower with one.

## BOREAS.

*Lin. Gmel.*

*Cram. ins.* pl. 70. f. B.

---

This species, which may be justly considered as one of the rarest of its tribe, is a native of South America, and is represented on the plate in its natural size.



Shaw, George. 1803. "Boreas, Pahalæna boreas [Pl. 582]." *The Naturalist's Miscellany* 14(CLXVII), <https://doi.org/10.5962/p.311025>.

**View This Item Online:** <https://www.biodiversitylibrary.org/item/278723>

**DOI:** <https://doi.org/10.5962/p.311025>

**Permalink:** <https://www.biodiversitylibrary.org/partpdf/311025>

**Holding Institution**

Museums Victoria

**Sponsored by**

Atlas of Living Australia

**Copyright & Reuse**

Copyright Status: Public domain. The BHL considers that this work is no longer under copyright protection.

This document was created from content at the **Biodiversity Heritage Library**, the world's largest open access digital library for biodiversity literature and archives. Visit BHL at <https://www.biodiversitylibrary.org>.