

THREE NEW EAST AFRICAN MOTHS.

By W. H. T. TAMS.

(Published by permission of the Trustees of the British Museum.)

ARCTIIDAE (NOLINAE).

Nola townsendi sp.n.

Plate 1, figs. 5 and 6.

♂ and ♀. General coloration greyish shaded with fuscous. Head and thorax whitish irrorate with fuscous, and sparsely irrorate with fuscous black. Abdomen light drab. Forewing with a pattern of fuscous and whitish, irrorate with fuscous black (arranged as in figure). Hindwing light drab, faintly shaded with fuscous distally, except before termen; fuscous shading through proximal half of fringe. Underside light drab to greyish, whitish along costa of both fore- and hindwing, forewing with costa edged with fuscous along proximal half. Expanse: 18 mm.

Holotype ♂ and allotype ♀. Kenya Colony (A. L. H. Townsend). Bred. In British Museum (Nat. Hist.).

LASIOCAMPIDAE.

Chilena pelodes sp.n.

Plate 1, figs. 1 and 2.

♂. Antenna honey yellow. Palpus fuscous. Head fuscous streaked with cinnamon buff. Thorax cinnamon buff streaked with fuscous. Abdomen tergally light buff. Pectus light buff, anteriorly fuscous streaked with cinnamon buff. Legs light buff, tibiae irrorate with fuscous, forelegs strongly shaded with fuscous. Venter light buff to pinkish buff streaked with fuscous. Forewing cinnamon buff to clay; a light buff spot on discocellulars; a broad fascia from apex to middle of inner margin, lightly shaded with fuscous along its proximal edge, strongly edged with fuscous distally, the proximal three-fourths of the intervening space shaded with hair brown, the distal fourth degraded light buff. Hindwing light buff, with a cinnamon buff terminal edging. Underside of both wings light buff, a light shade of cinnamon buff along the costa of each, and around end of cell in hindwing. Expanse: 34 mm.

♀. Similar, the prevailing colour a soft hair brown, with hardly a trace of cinnamon buff in the forewing, and lacking the discocellular spot. Expanse: 40 mm.

Holotype ♂ and allotype ♀. Nakuru (A. L. H. Townsend), bred August, 1936. In British Museum (Nat. Hist.).

Leipoxais compsotes sp.n.

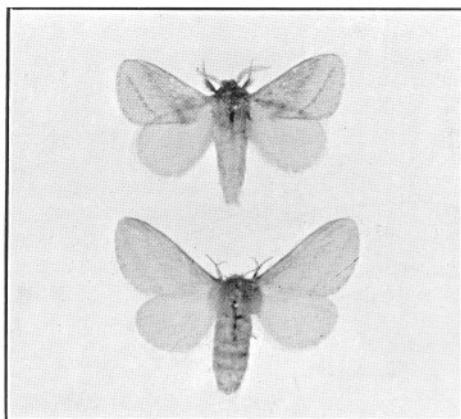
Plate 1, figs. 3 and 4.

♂. Antenna with shaft chocolate irrorate with light buff, pectinations honey yellow. Palpus cinnamon buff shaded ventrally with chocolate. Head, thorax, abdomen, pectus, legs, and venter vinaceous russet, irrorate or streaked with light buff, the pattern (cf. figure) picked out in fuscous. Hindwing vinaceous russet, the proximal half slightly streaked with light buff, the pattern fuscous. Underside similar, with more light buff irroration, producing a more greyish effect. Expanse: 34 mm.

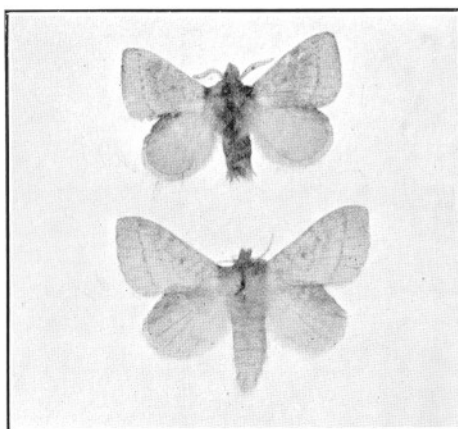
♀. Similar, the colours less vivid. Expanse: 40 mm.

Holotype ♂ and allotype ♀. Kenya Colony (A. L. H. Townsend), bred. In British Museum (Nat. Hist.).

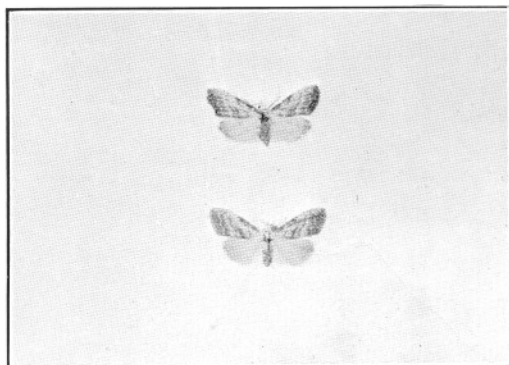
PLATE 1.



Chilena pelodes, sp.n.



Leipoxais compsotes, sp.n.



Nola townsendi, sp.n.