

Figure 1

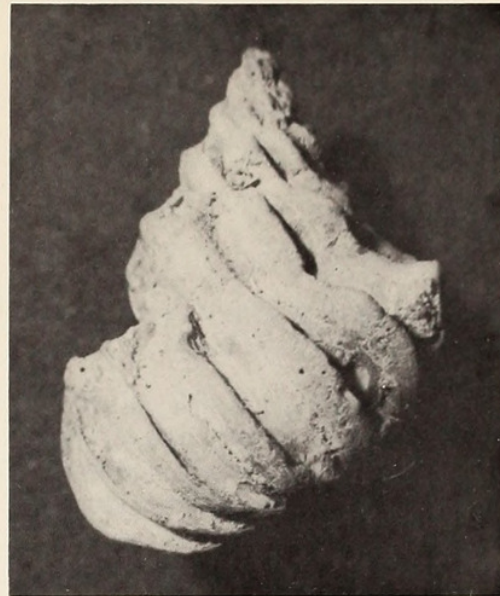


Figure 2

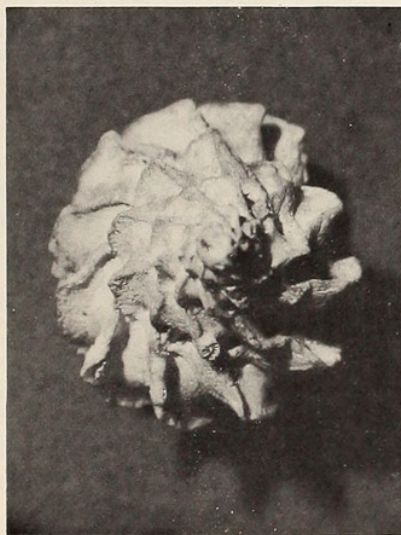


Figure 3

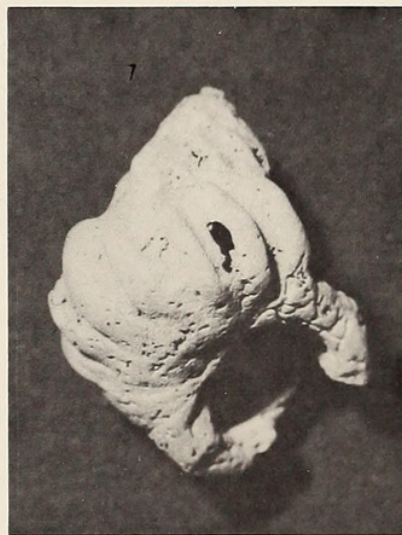


Figure 4

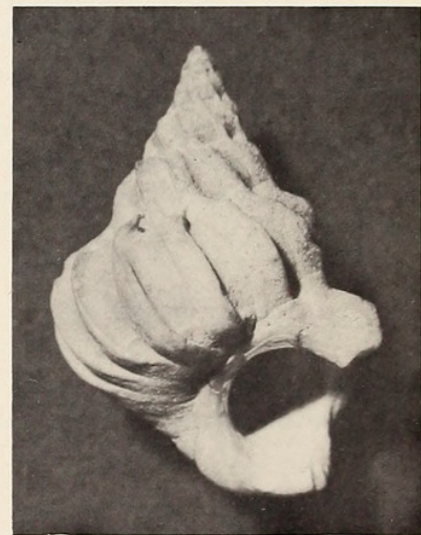


Figure 5

Figure 1: Apertural view of *Epitonium (Sthenorytis) turbinum* DALL, 1908  
Hancock Foundation Station 572-36, San Pedro Nolasco Island,  
Gulf of California, Mexico (x 1½)

Figure 2: Back view of the same specimen. (x 1½)

Figure 3: Same specimen viewed from above showing decollation of the spire (x 1 )

Figure 4: Apertural view of *Epitonium (Sthenorytis) turbinum* DALL, 1908  
Hancock Foundation Station 618-37, Cape San Lucas,  
Lower California, Mexico (x 1)

Figure 5: Apertural view of *Epitonium (Sthenorytis) turbinum* DALL, 1908  
Hancock Foundation Station 618-37, Cape San Lucas,  
Lower California, Mexico (x 1)



Coan, Eugene V. 1966. "Concerning 'The Mollusca of the Santa Barbara County Area. Part 2. Gastropoda and Amphineura.'" *The veliger* 8, 313–313.

**View This Item Online:** <https://www.biodiversitylibrary.org/item/134685>

**Permalink:** <https://www.biodiversitylibrary.org/partpdf/97403>

**Holding Institution**

Smithsonian Libraries and Archives

**Sponsored by**

Biodiversity Heritage Library

**Copyright & Reuse**

Copyright Status: In Copyright. Digitized with the permission of the rights holder.

Rights Holder: California Malacozoological Society

License: <http://creativecommons.org/licenses/by-nc-sa/3.0/>

Rights: <https://www.biodiversitylibrary.org/permissions/>

This document was created from content at the **Biodiversity Heritage Library**, the world's largest open access digital library for biodiversity literature and archives. Visit BHL at <https://www.biodiversitylibrary.org>.