

MUS. COMP. ZOOLOGICAL
LIBRARY.

FEB 27 1964

HARVARD
UNIVERSITY.

TRANSACTIONS
OF THE
SAN DIEGO SOCIETY OF NATURAL HISTORY

VOLUME 13, No. 9, pp. 173-176

A NEW MARINE BEETLE FROM THE GULF OF CALIFORNIA
(Coleoptera: Staphylinidae)

BY

IAN MOORE

*Research Associate in Entomology
San Diego Natural History Museum*

SAN DIEGO, CALIFORNIA

PRINTED FOR THE SOCIETY

FEBRUARY 14, 1964

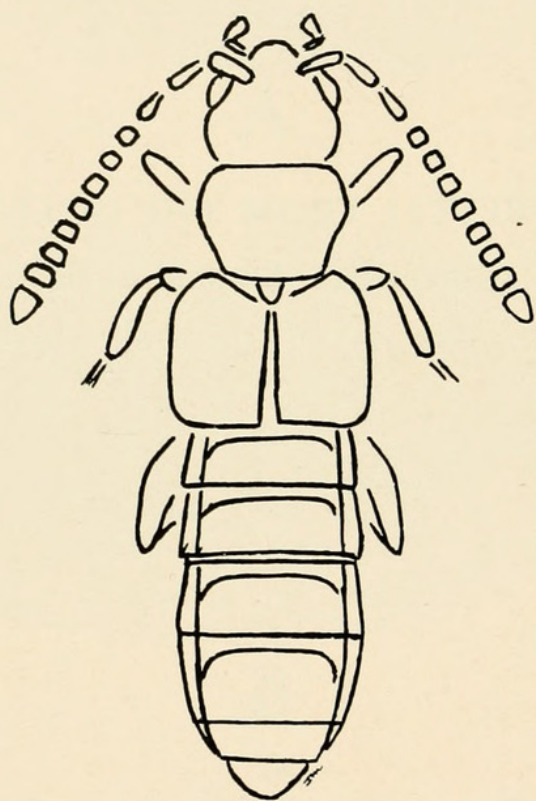


Fig. 1. *Cameronium sonorensis*, new species.

A NEW MARINE BEETLE FROM THE GULF OF CALIFORNIA

(Coleoptera: Staphylinidae)

BY

IAN MOORE

Species of the genus *Cameronium* have hitherto been known only from the shores of the warm arid regions of North Africa and the Red Sea and from Zanzibar. The discovery of a new species in cracks in the rocks in the intertidal zone of the desert coast of Sonora, Mexico, discloses a very interesting example of insect distribution. We can anticipate the discovery of other species of this genus in similar situations in other parts of the world.

Members of this genus differ from other marine bolitocharinids by the combination of their unarmed tibiae and bifid ligulae. A more detailed discussion of the genus may be found in Moore (1956).

Cameronium sonorensis, new species

Holotype. — From cracks in the rocks in the intertidal zone at Punta de los Cuervos, San Carlos Bay, Sonora, Mexico; collected by Ian Moore, November 7, 1962; in the California Academy of Sciences.

Paratypes. — Three specimens, same data as holotype, in the California Academy of Sciences, the San Diego Natural History Museum, and the collection of Ian Moore.

Description of holotype. — Form: Small, elongate, subparallel (fig. 1). Color: Head piceous, becoming paler anteriorly, pronotum rufo-testaceous, mesosternum piceous, elytra rufo-testaceous, with the scutellar region clouded, abdomen piceous, the tergites paler apically, antennae with the first two segments pale, the others progressively darker, legs and mouth parts testaceous.

Head: Orbicular; surface evenly convex at the sides, shallowly impressed centrally between the eyes, densely reticulate, finely and rather densely punctured throughout. Eyes at about their length from base of head. Antennae: First two segments more than twice as long as wide, third a little narrower and a little shorter than second, fourth through sixth about as wide as second, not longer than wide, seventh through tenth distinctly transverse, eleventh longer than wide, gradually narrowed to apex.

Pronotum: About as wide as head, transverse, widest near apical third; sides arcuate in apical half, sinuate before the hind angles; apical margin straight; base arcuate. Surface convex except for a broad, shallow central impression which is deepest near the base. Integument sculptured very much like the head. Elytra: Distinctly wider and a little longer than the pronotum. Sides gently arcuate, apices straight. Surface sculpture similar to that of pronotum.

Abdomen: The first three segments nearly parallel, thence gradually tapered to apex. Surface with a sparse network of fine lines; finely, sparsely, somewhat asperately punctured; interspaces very shining. Length: 2 mm. Sex: unknown.

The paratypes differ in no noticeable way from the holotype.

This species is very similar in structure to *C. obockianum* but has the head black, whereas it is pale in the latter.

KEY TO THE SPECIES OF *Cameronium*

- 1a. Head pale *liebmanni*, *obockianum*
1b. Head dark
2a. Pronotum black *flavipenne*
2b. Pronotum pale *sonorensis*

BIBLIOGRAPHY OF THE GENUS *Cameronium*

Cameron, Malcolm

1944. New oriental Staphylinidae (Col.). Ann. Mag. Nat. Hist., ser. 11, 11:312-322.

Fauvel, Albert

1905. Staphylinides exotique nouveaux, pt. 3. Revue d'Ent. 24:113-147.

Koch, Carlos

1936. Wissenschaftliche Ergebnisse der entomologischen Expeditionen Seiner Durchlaucht des Fürsten Alessandro C. Dello Torre e Tasso nach Aegypten und auf die Halbinsel Sinae, XIII: Staphylinidae. Publ. Mus. Ent. Pietro Rossi 1:115-232.

Moore, Ian

1956. A revision of the Pacific coast Phytosi with a review of the foreign genera (Coleoptera: Staphylinidae). Trans. San Diego Soc. Nat. Hist. 12:103-151.

Scheerpeltz, Otto

1957. Ein neue Art der Gattung *Cameronium* (Col. Staphylinidae) (75. Beitrag zur Kenntnis der Paläarktischen Staphyliniden). Ent. Blätter 53:147-150.



1964. "A new marine beetle from the gulf of California (Coleoptera: Staphylinidae)." *Transactions of the San Diego Society of Natural History* 13, 173–176. <https://doi.org/10.5962/bhl.part.9598>.

View This Item Online: <https://www.biodiversitylibrary.org/item/25477>

DOI: <https://doi.org/10.5962/bhl.part.9598>

Permalink: <https://www.biodiversitylibrary.org/partpdf/9598>

Holding Institution

Harvard University, Museum of Comparative Zoology, Ernst Mayr Library

Sponsored by

Harvard University, Museum of Comparative Zoology, Ernst Mayr Library

Copyright & Reuse

Copyright Status: In copyright. Digitized with the permission of the rights holder.

License: <http://creativecommons.org/licenses/by-nc-sa/3.0/>

Rights: <https://biodiversitylibrary.org/permissions>

This document was created from content at the **Biodiversity Heritage Library**, the world's largest open access digital library for biodiversity literature and archives. Visit BHL at <https://www.biodiversitylibrary.org>.