

**LIFE COLORS OF *PÆCILIA LIMANTOURI*, AND DESCRIPTION OF A NEW HEROS FROM MEXICO.**

BY HENRY W. FOWLER.

The Academy has received a small collection of fishes from Tamaulipas, Mexico. They were secured January 16 by Mr. S. N. Rhoads, while on his recent visit to Mexico, in the warm waters of the Victoria river near Victoria. This is a small stream tributary of the Rio Soto la Marina, at the foothills of the Sierra Madre Mountains in western Tamaulipas.

The material is in excellent condition, so that it is possible to give the life colors of the *Pæcilia*, which were unknown.

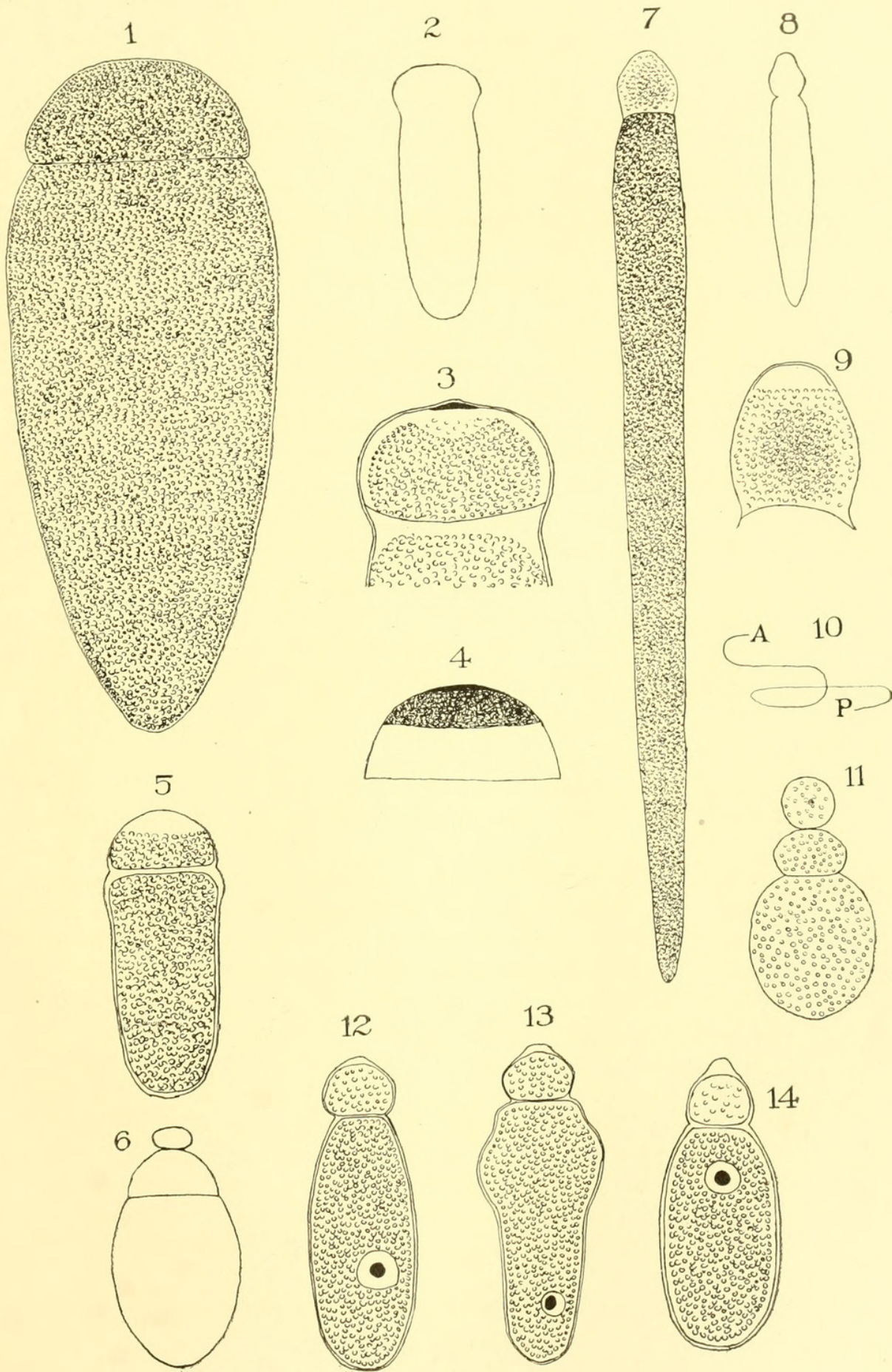
**PÆCILIIDÆ.**

**1. *Pæcilia limantouri* Jordan and Snyder.**

1900. *Pæcilia limantouri* Jordan and Snyder, Bull. U. S. Fish Comm., p. 129, fig. 10; Rio Tamesoe, near Tampico, Tamaulipas, Mexico (Coll. J. O. Snyder, No. 6,165, L. Stanford, Jr. Univ. Mus.).

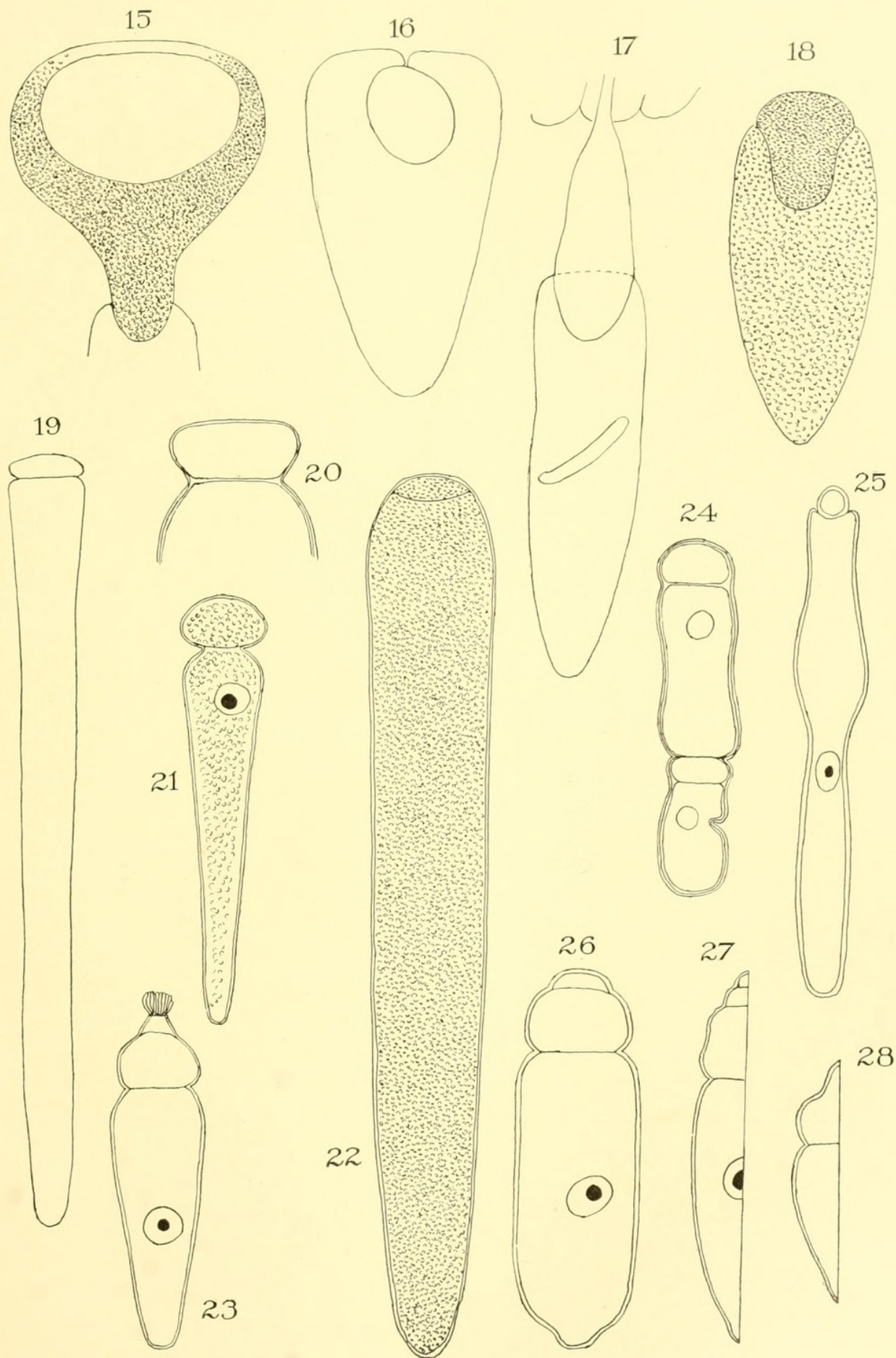
Color in alcohol of adult male. Deep olivaceous above, and becoming paler where it extends down along the middle of the side. Posteriorly the dark upper color extends lower. Each scale on the upper surface margined with darker, and the side of the body sprinkled with diffuse dusky specks. Chin and jaws dusky. Lower surface of the head cadmium-yellow, burnished with brassy-orange, and then becoming whitish below. Cheek and lower opercle marked with diffuse dusky specks. Abdomen and lower half of the body pale orange, becoming whitish below, and grayish posteriorly. Five or six longitudinal rows of bright orange spots running along the side, the uppermost following the lateral line, and the others parallel. Dorsal with its basal half dark, the rays deep gray, and the membranes black. Outer portion of the dorsal broadly bright orange. Caudal dark for two-thirds its basal portion, the median basal scales more or less silvery-gray, and then a broad black transverse median band formed by the black membranes, the rays grayish. Outer portion of the caudal broadly deep orange. Pectoral very dilute brown, the base obscurely orange, and then a pale slaty blotch. Ventrals and anal dilute orange. Iris deep brown.

Considerable variation occurs, many examples having as many as a



CRAWLEY ON GREGARINES.





CRAWLEY ON GREGARINES.



Fowler, Henry W. 1903. "Life Colors of *Poecilia limantouri*, and Description of a New Heros from Mexico." *Proceedings of the Academy of Natural Sciences of Philadelphia* 55, 320–323.

**View This Item Online:** <https://www.biodiversitylibrary.org/item/30485>

**Permalink:** <https://www.biodiversitylibrary.org/partpdf/84559>

**Holding Institution**

MBLWHOI Library

**Sponsored by**

MBLWHOI Library

**Copyright & Reuse**

Copyright Status: NOT\_IN\_COPYRIGHT

This document was created from content at the **Biodiversity Heritage Library**, the world's largest open access digital library for biodiversity literature and archives. Visit BHL at <https://www.biodiversitylibrary.org>.