

A BILATERAL GYNANDROMORPH OF *ANTEPIONE THISOARIA*
(GEOMETRIDAE)

An interesting bilateral gynandromorph of the geometrid moth, *Antepione thisoaria* (Guenée), was collected at mercury vapor light in August 1974 about 11 km southwest of Nashville, Tennessee. This specimen (Fig. 1) has a wingspan of 34 mm with male hindwing coloration on the right side and female to the left; the irregular brown patches towards the margins of each forewing suggest a mixture of male and female traits. The wing-coupling apparatus and genitalia are of male type on the right side and of female type to the left.

I am grateful to A. Watson and Drs. D. S. Fletcher, R. W. Hodges and D. C. Ferguson for their comments concerning this specimen which is presently in the author's possession.

LANCE A. DURDEN, *Department of Anatomy, Vanderbilt University School of Medicine, Nashville, Tennessee 37232.*

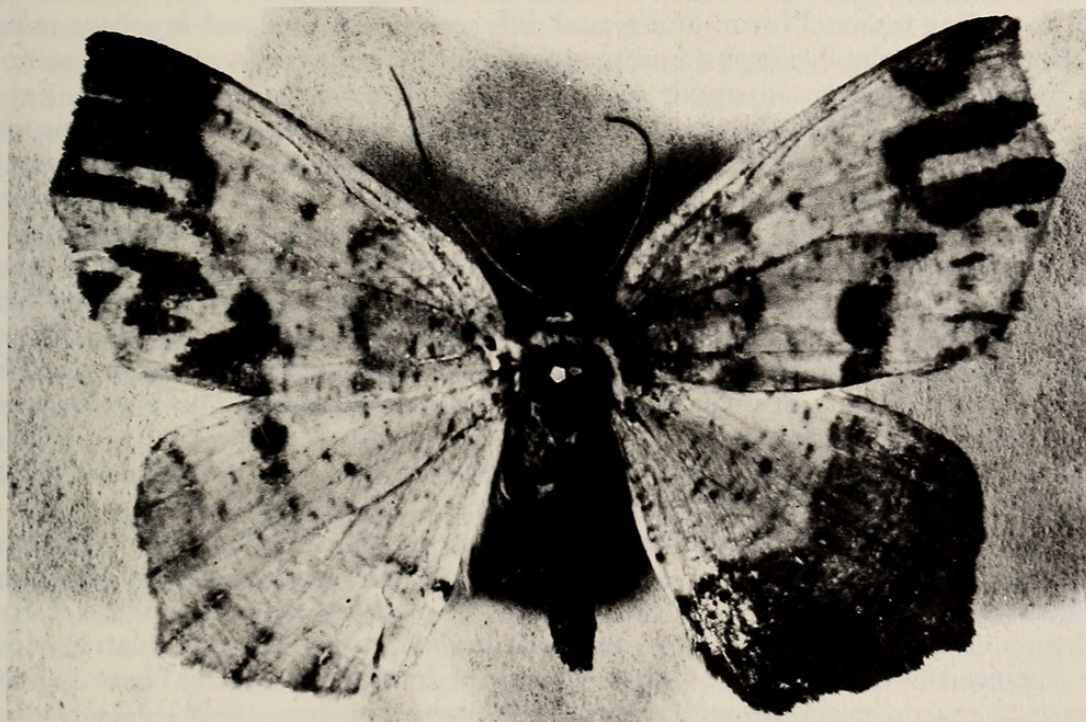


FIG. 1. Bilateral gynandromorph of *Antepione thisoaria* (Guenée).



Durden, Lance A. 1985. "A bilateral gynandromorph of *Antepione thisoaria* (Geometridae)." *Journal of the Lepidopterists' Society* 38, 323–323.

View This Item Online: <https://www.biodiversitylibrary.org/item/128065>

Permalink: <https://www.biodiversitylibrary.org/partpdf/81005>

Holding Institution

Smithsonian Libraries and Archives

Sponsored by

Biodiversity Heritage Library

Copyright & Reuse

Copyright Status: In Copyright. Digitized with the permission of the rights holder.

License: <http://creativecommons.org/licenses/by-nc-sa/3.0/>

Rights: <https://www.biodiversitylibrary.org/permissions/>

This document was created from content at the **Biodiversity Heritage Library**, the world's largest open access digital library for biodiversity literature and archives. Visit BHL at <https://www.biodiversitylibrary.org>.