

of this monstrous individual with the same parts in the true female wings (see Plate XLIV. fig. 1, male, Plate XLIV. fig. 4, female *P. pollux*) it will be sufficiently clear that it is to the latter that the incipient male portion of the monster's wing is to be referred, and that, had the male characters been fully developed, we should have seen a specimen marked, like the female, with a row of large hastate marks running across the hind wings, not, however, suffused towards the base of the wing as in fig. 4, nor confined to the outer angle of the wings as in figures 1 and 3, and wanting the large 4-partite white patch of *P. castor*, of which there is no trace in Mr. Semper's insect.

EXPLANATION OF THE PLATES.

PLATE XLIV.

- Fig. 1. *Papilio castor* ♂, upper surface right hind wing.
 2. *P. castor* ♂, under surface right hind wing.
 3. *P. castor* ♂, upper surface right hind wing of small variety.
 4. *P. pollux* ♀, underside of right hind wing.
 5. Gynandromorphous specimen of *P. pollux*.

PLATE XLV.

- Fig. 1. *Papilio pollux*, local variety? (*P. dravidarum*, Wood-Mason), male.
 2. " " " " (female).

7. On the Birds of the Vicinity of Lima, Peru. By P. L. SCLATER, M.A., Ph.D., F.R.S. With Notes on their Habits by Prof. W. NATION, of Lima, C.M.Z.S. (Part V.)¹

[Received March 21, 1881.]

(Plate XLVI.)

The small collection lately received from our Corresponding Member, Prof. W. Nation, of Lima, which I now exhibit, serves to show us how far, as yet, from being exhausted, even in the generally well-known class of Birds, are the Andes of Peru. Out of the twelve species represented in the present series, two appear to be new to science, and several others (e. g. *Polyonymus caroli* and *Metallura opaca*) are of much rarity.

Prof. Nation, who has fortunately passed with safety the ordeal of the capture of Lima by the Chilian army, writes me word that two friends, Mr. Dallas and Mr. Turfield, passing a holiday on the Cordillera, agreed at his request to shoot such birds as they came across, and to forward the same in the flesh to him in Lima. The result of this plan exceeded Prof. Nation's utmost expectations; 150 specimens were secured, of which sixteen were new to Prof. Nation's collection.

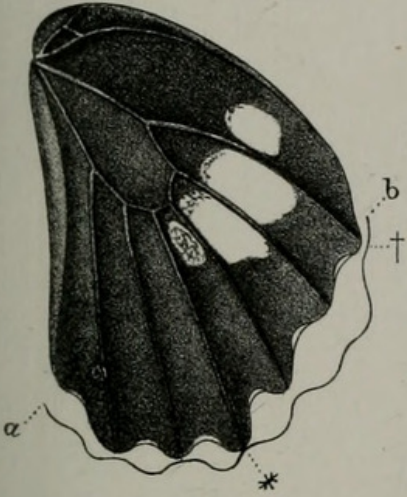
It is a selection from the birds so obtained that I now exhibit.

¹ Continued from P. Z. S. 1871, p. 498.

3♂.



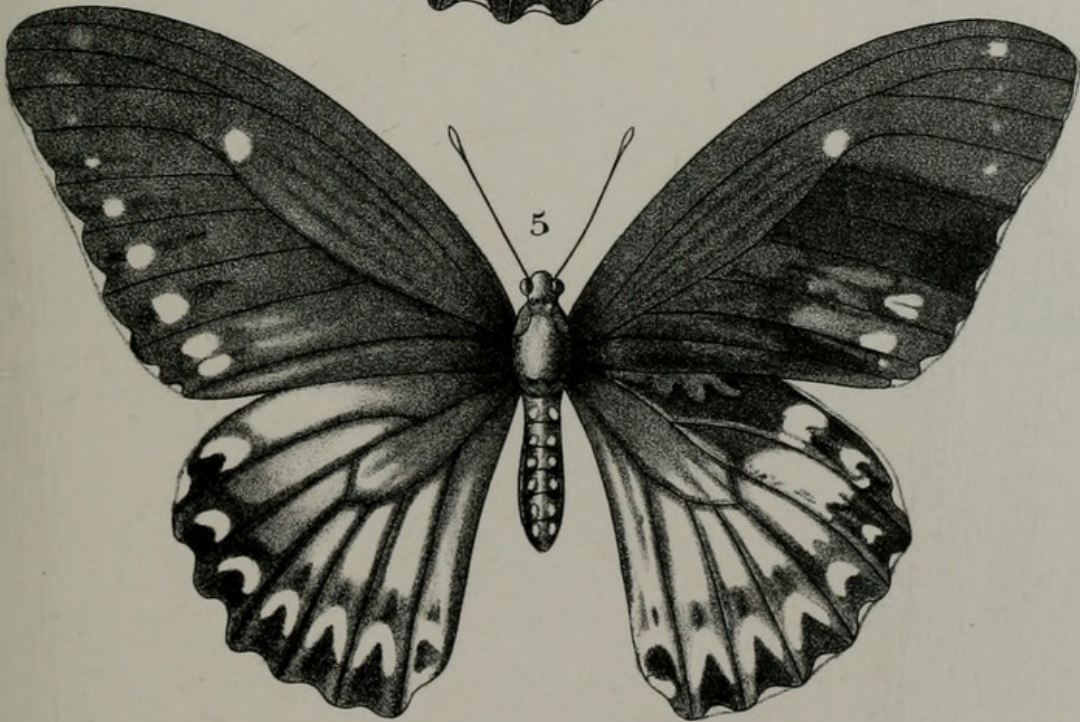
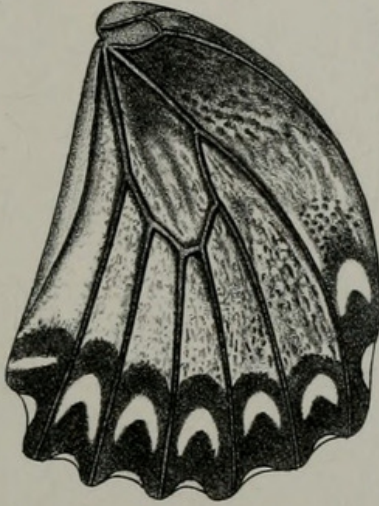
1♂.



2♂.



4♀.

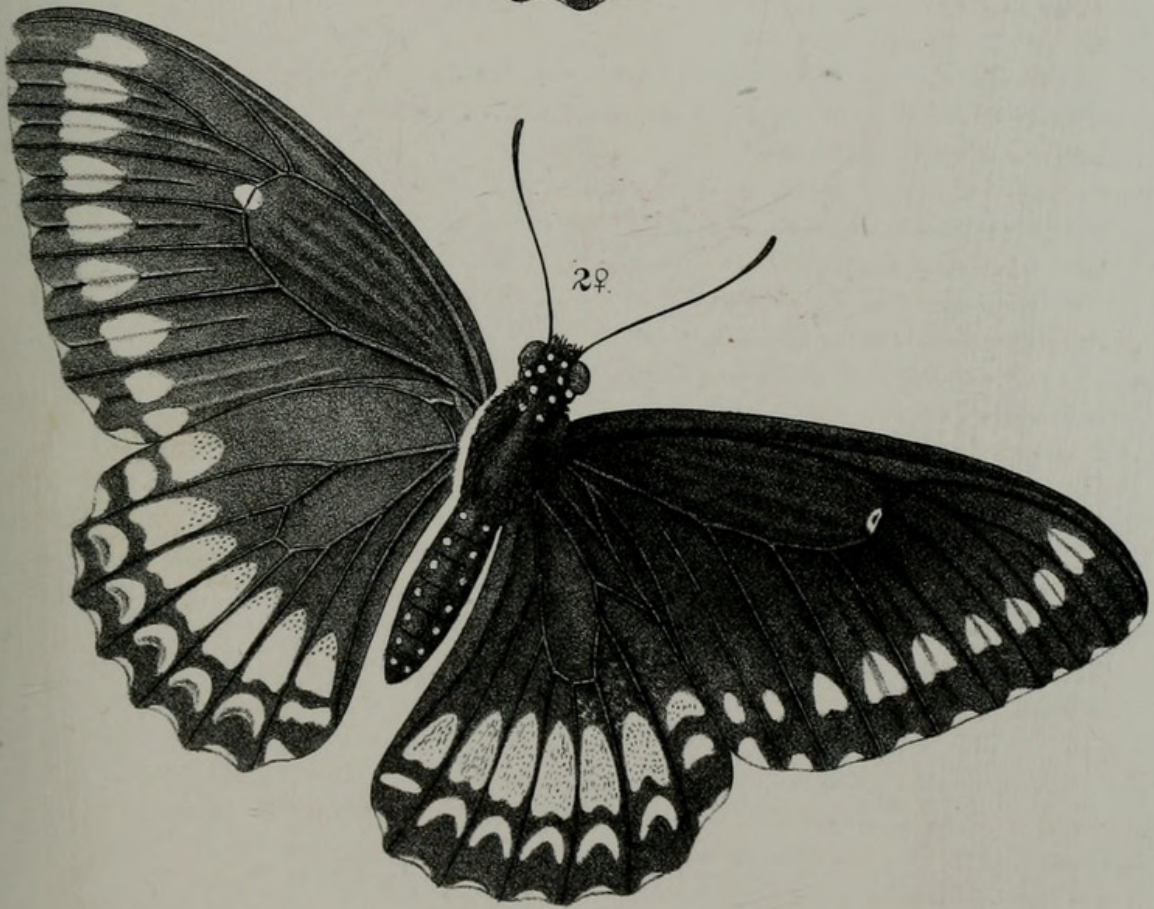


del. W. Purkiss lith.

Hanhart imp.

Fig. 1, 2, 3. PAPILIO CASTOR. Fig. 4 P. POLLUX.
5 P. POLLUX. (*Gynandromorphous. ind.*)





del W. Purkiss lith.

Hanhart imp.

PAPILIO POLLUX (*var* DRAVIDARUM)





1881. "On the Birds of the Vicinity of Lima, Peru." *Proceedings of the Zoological Society of London* 1881, 484-488.

<https://doi.org/10.1111/j.1096-3642.1881.tb01307.x>.

View This Item Online: <https://www.biodiversitylibrary.org/item/96698>

DOI: <https://doi.org/10.1111/j.1096-3642.1881.tb01307.x>

Permalink: <https://www.biodiversitylibrary.org/partpdf/69431>

Holding Institution

Natural History Museum Library, London

Sponsored by

Natural History Museum Library, London

Copyright & Reuse

Copyright Status: Public domain. The BHL considers that this work is no longer under copyright protection.

This document was created from content at the **Biodiversity Heritage Library**, the world's largest open access digital library for biodiversity literature and archives. Visit BHL at <https://www.biodiversitylibrary.org>.