

## Two new Saldids from Celebes

by

H. C. BLÖTE

The number of Saldinae, known from the East Indian Archipelago is extremely small. Besides two species occurring in the Malay Peninsula — *Salda dixonii* Dist. and *Salda malayensis* Dover — there is but one species known from Java and Bali, viz., *Acanthia javanica* Jaczewski.

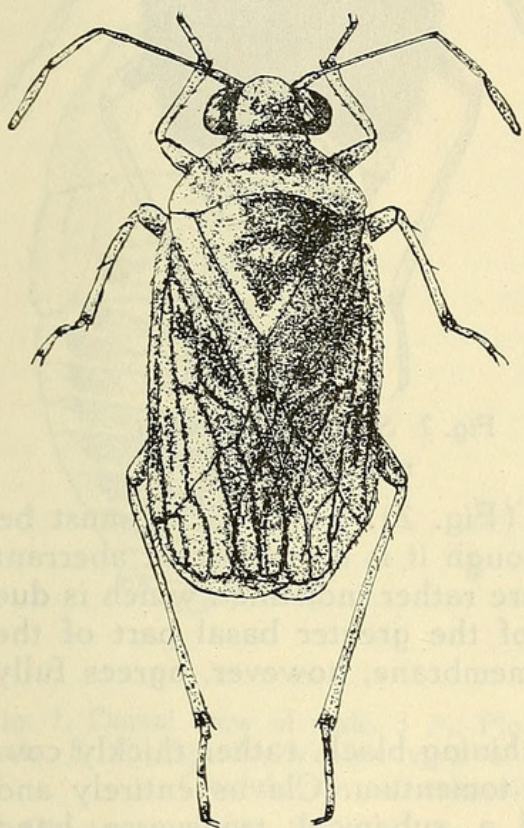


Fig. 1. *Pentacora sonneveldti*,  
nov. sp.  $\times 11\frac{1}{2}$

Therefore I was much interested in finding two different species of Saldinae in a collection of insects from Macassar (Celebes), brought together by my friend Mr. J. Sonneveldt in 1927—1928. Mr. Sonneveldt passed away during the Japanese invasion; in commemoration of our friendship I want to dedicate to him both species, which are new to science.

***Pentacora sonneveldti* nov. spec.** (Fig. 1). The genus *Pentacora*, hitherto only known from America, appears to occur also in Celebes. This fact, however surprising, has an analogon in the distribution of the genus *Saldoida*, which occurs in America and in Formosa. I don't want to walk in the footsteps of Bredin and others and to give some zoogeographical speculation upon these facts, as our knowledge of the Celebes fauna,

and of the geographical distribution of small animals as Saldids are, is entirely insufficient for that purpose.

The actual species of *Pentacora* fully agrees in all generic characters with the known species from America. Greyish ochraceous above, the hemelytra subtransparent. Vertex posteriorly with dark brown markings; anterior area of the pronotum and the scutellum, a V-shaped yellowish apical spot excepted, nearly black. The posterior and intermedial cells of the corium with longitudinal



brown patches, the subcostal cell also with a brown streak near the costal inflexion of the hemielytra. The veins on the corium and the membrane are brown, and very distinct.

Antennae greyish yellow, the second joint nearly as long as the third and fourth joints together. Legs light yellowish, the femora slightly darkened towards their tops; the extreme apices of tibiae and tarsi blackish.

Both specimens on hand are females, their genital plates are formed into a rather long brown ovipositor with obliquely truncate apex, the ventral apical corner protruding notably beyond the dorsal edge. Lateral corners of the sixth (seventh) abdominal segment with a yellow, hook-shaped, downwardly curved protrusion. — Length (of the ♀):  $4\frac{1}{3}$ — $4\frac{1}{2}$  mm. — Collected by J. Sonneveldt, Macassar, between October 1927 and April 1928. — Holo- and paratype in the Rijksmuseum van Natuurlijke Historie.

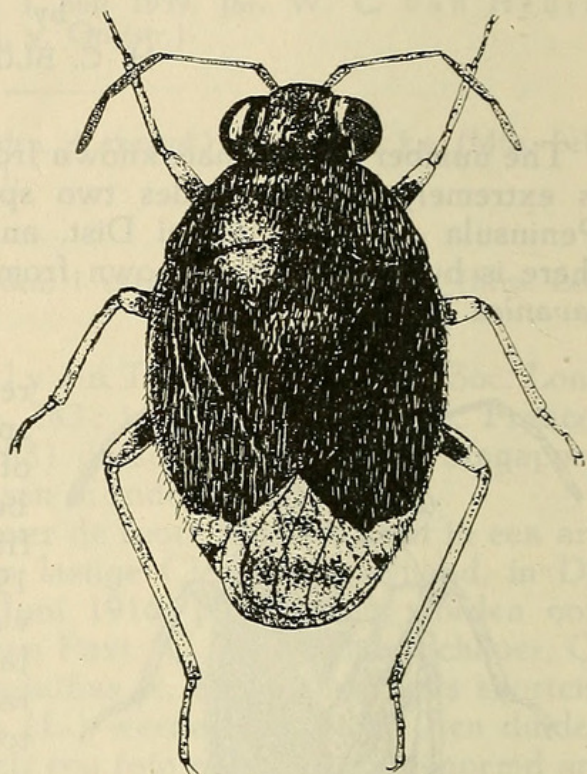


Fig. 2. *Saldula sonneveldti*,  
nov. sp.  $\times 20$ .

*Saldula sonneveldti* nov. spec. (Fig. 2). This species must be brought into the genus *Saldula*, though it is of somewhat aberrant aspect. The nerves on the corium are rather indistinct, which is due to the uniform dull black colour of the greater basal part of the hemielytra. The nervature of the membrane, however, agrees fully with that of the genus *Saldula*.

Head, pronotum and scutellum shining black, rather thickly covered with whitish yellow, shining tomentum. Clavus entirely and corium, a narrow outer edge and a subapical transverse band which are whitish excepted, dull black, somewhat more sparingly covered with still more goldy shining tomentum. Membrane greyish, semitransparent, with irregular brownish spots that have a tendency to form a transverse medial band and a subapical border. Antennae black, the apex of the first joint and the second joint except the apex yellow. Femora black with yellow base and top. Tibiae and tarsi yellow, their apices darkened. Underside shining black, tomentous, the ultimate ventral segment of the ♀ yellow. Ovipositor rather short, acute, black. — Length (of the ♀):  $2\frac{3}{4}$  mm. — Macassar, October 1927—April 1928. J. Sonneveldt. Holo- and paratype in the Rijksmuseum van Natuurlijke Historie.



Blöte, H. C. 1947. "Two new Saldids from Celebes." *Tijdschrift voor entomologie* 88, 547–548.

**View This Item Online:** <https://www.biodiversitylibrary.org/item/89185>

**Permalink:** <https://www.biodiversitylibrary.org/partpdf/65769>

**Holding Institution**

Harvard University, Museum of Comparative Zoology, Ernst Mayr Library

**Sponsored by**

Harvard University, Museum of Comparative Zoology, Ernst Mayr Library

**Copyright & Reuse**

Copyright Status: In copyright. Digitized with the permission of the rights holder.

License: <http://creativecommons.org/licenses/by-nc-sa/3.0/>

Rights: <https://biodiversitylibrary.org/permissions>

This document was created from content at the **Biodiversity Heritage Library**, the world's largest open access digital library for biodiversity literature and archives. Visit BHL at <https://www.biodiversitylibrary.org>.