

A NEW *ANISOPS* FROM KENYA (HEMIPTERA: NOTONECTIDAE)

CHARLES V. REICHART

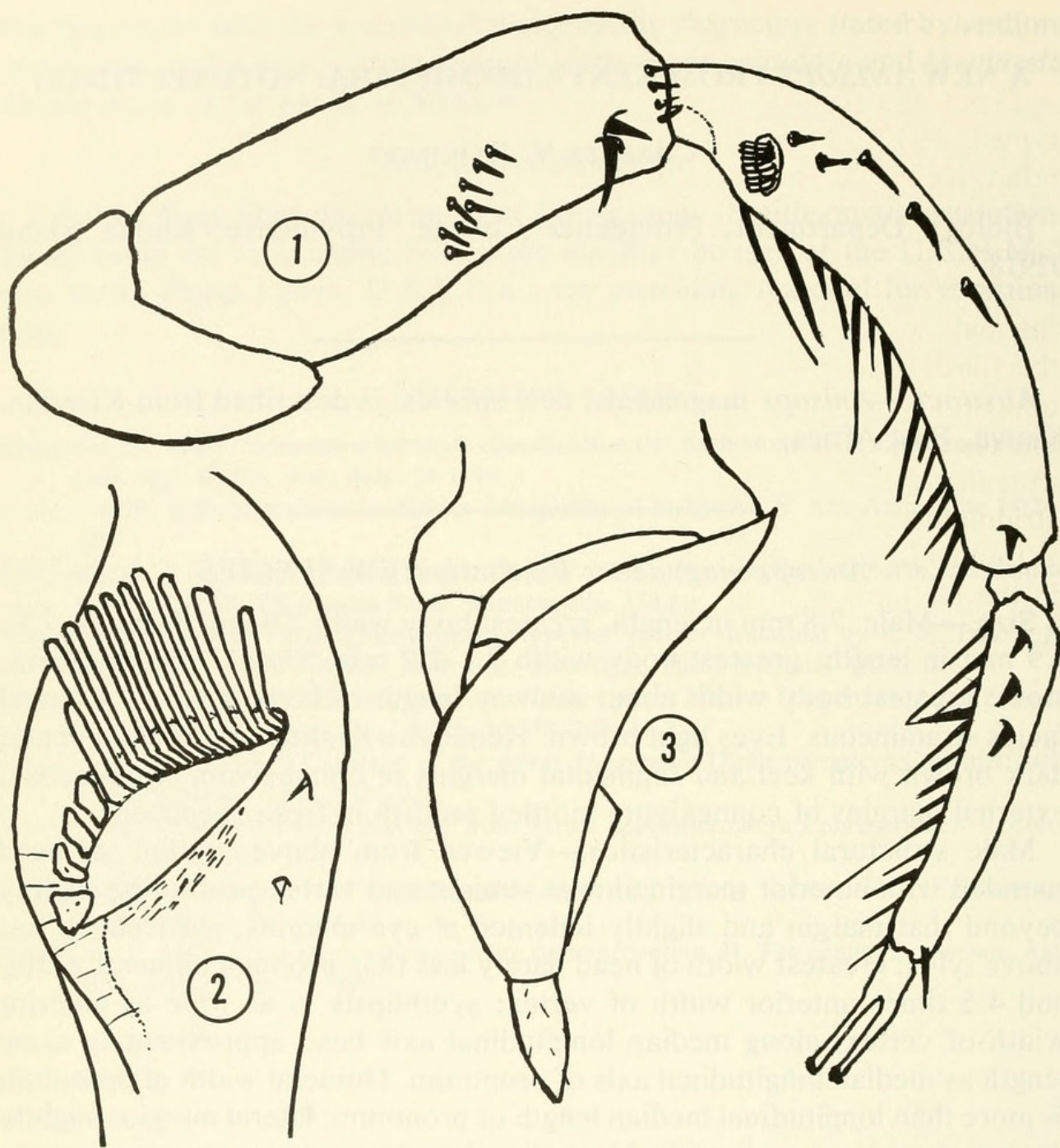
Biology Department, Providence College, Providence, Rhode Island 02918.

Abstract.—*Anisops magnadens*, new species, is described from Kiserian, Kenya, East Africa.

Anisops magnadens Reichart, NEW SPECIES

Size.—Male, 7.8 mm in length, greatest body width 2.0 mm; females, 7.8–7.9 mm in length, greatest body width 2.1–2.2 mm. *Shape:* Subfusiform, stout; greatest body width about midway length of body. *Color:* General facies stramineous. Eyes light brown. Hemelytra hyaline. Abdominal venter dark brown with keel and segmental margins of connexivum stramineous; external margins of connexivum mottled reddish in fresh specimens.

Male structural characteristics.—Viewed from above, outline of head rounded with anterior margin almost straight and vertex protruding slightly beyond that margin and slightly indented at eye margins, particularly just above tylus; greatest width of head barely less than pronotal humeral width, and $4\frac{1}{2}$ times anterior width of vertex; synthipsis $\frac{1}{3}$ as wide as anterior width of vertex; along median longitudinal axis head approximately same length as median longitudinal axis of pronotum. Humeral width of pronotum $\frac{2}{5}$ more than longitudinal median length of pronotum; lateral margins slightly divergent and approximately $\frac{2}{3}$ median length; posterior margin convex, medially emarginate; barely perceptible median carina bordered on each side by large shallow depression extending almost $\frac{2}{3}$ length of pronotum; anterior end of carina margined by 2 distinctive small pits; point of pronotum inserted between eyes horizontally rugose. Scutellum $\frac{3}{5}$ wider than long; large shallow depression anteriorly on each side of median; apex slightly raised. Facial tubercle moderately swollen. Basal width of labrum wider than median length; apex bluntly rounded. Rostral prong (Fig. 3) arises at very apex of 3rd rostral segment and more than twice as long as this segment; broadly expanded with translucent keel on anterior margin of prong; apex bluntly acuminate. Stridulatory comb (Fig. 2) with 10 teeth, 7 of which are approximately same length; distally, these teeth followed by 4 padlike areas. Chaetotoxy of left front leg shown in Fig. 1.



Figs. 1-3. *Anisops magnadens*. 1, Left front leg. 2, Stridulatory comb of tibia. 3, Rostral prong.

Female structural characteristics.—Viewed from above, outline of head rounded, with vertex extending slightly beyond; greatest width of head slightly more than $\frac{5}{6}$ pronotal humeral width and $4\frac{1}{2}$ times anterior width of vertex; synthipsis wide, only slightly less than $\frac{1}{2}$ anterior width of vertex; along median longitudinal axis head slightly more than median longitudinal length of pronotum. Pronotum with humeral width slightly more than median length; lateral margins divergent and slightly less than $\frac{1}{2}$ median length; posterior margin convex, medially emarginate. Scutellum $\frac{4}{5}$ wider than long. Tylus slightly

inflated, smooth, and broadly triangular. Frons almost parallel. Labrum with basal width equal to median length; bluntly rounded.

Types and type-locality.—One male (holotype) and three females (paratypes), 26-X-67, from a small, muddy, roadside pool in the vicinity of Kis-erian, Kenya (C. V. Reichart # 1735).

Comparative notes.—*Anisops magnadens* keys out to couplet 30 (*A. varia* Fieber) in Brooks' monograph (1951). However, it can be readily distinguished from *varia* and all other *Anisops* species by the enormous prong of the male which covers the entire rostrum and is more than twice as long as the third segment. The stridulatory comb is also distinctly different, with ten teeth as compared to approximately 21 in *varia*; the basal two teeth and the distal tooth are shorter than the other seven. Four padlike areas of irregular shape follow the distal tooth. *A. magnadens* also has a striated stridulatory ridge similar to *A. gracilis* Hutchinson.

Deposition of types.—Holotype male, and one paratype female deposited in the National Museum of Natural History, Smithsonian Institution, type no. 76125.

LITERATURE CITED

- Brooks, G. T. 1951. A revision of the genus *Anisops* (Notonectidae, Hemiptera). Kans. Univ. Sci. Bull. 34:304-519.



Reichart, C V. 1979. "New Anisops From Kenya (Hemiptera, Notonectidae)." *Proceedings of the Entomological Society of Washington* 81, 447-449.

View This Item Online: <https://www.biodiversitylibrary.org/item/81298>

Permalink: <https://www.biodiversitylibrary.org/partpdf/63482>

Holding Institution

Smithsonian Libraries and Archives

Sponsored by

Smithsonian

Copyright & Reuse

Copyright Status: In copyright. Digitized with the permission of the rights holder.

Rights Holder: Entomological Society of Washington

License: <http://creativecommons.org/licenses/by-nc-sa/3.0/>

Rights: <https://biodiversitylibrary.org/permissions>

This document was created from content at the **Biodiversity Heritage Library**, the world's largest open access digital library for biodiversity literature and archives. Visit BHL at <https://www.biodiversitylibrary.org>.