

ESW PAST-PRESIDENTS FOR THE YEARS 1884 THROUGH 1983, PHOTOGRAPHS AND SUPPORT OFFICERS

MANYA B. STOETZEL

Systematic Entomology Laboratory, Agricultural Research Service, USDA,
Beltsville, Maryland 20705.

As the Entomological Society of Washington approaches its 100th birthday, March 12, 1984, it seems appropriate to honor those individuals who have served the Society as officers and committee chairmen. Towards that end, photographs of all Past-Presidents and a list of their support officers for the years 1884 through 1983 are presented. The slate of officers is preceded by the names of Past Honorary Presidents and Past Honorary Members and is followed by a list of our current members.

Charles Valentine Riley was the Society's first President; he was elected unanimously for a second term in 1885; but when he was drafted for a third term in 1886, he declined because he felt others should have the opportunity to lead the Society. Later he apparently abandoned this position for he served again in 1892 and 1893. With few exceptions, two-term presidencies were the pattern from 1884 through 1910, from 1916 through 1921, and in 1929-1930. Leland O. Howard, the Society's second President, served in 1886 and 1887 and again in 1923. From 1884 through 1983, a total of 82 different individuals served as President of the Entomological Society of Washington.

Space does not allow for a full discussion of circumstances affecting the terms of some officers. However, special mention is made of two vacancies of the presidency. The death of President H. C. Hubbard in January of 1899 left the Society without a president. At that time 1st Vice-President T. N. Gill chaired the meetings until the May 1899 meeting when the membership finally made Gill President. The Society also had two Presidents in 1973. The details are chronicled in the minutes for the 801st Regular Meeting—December 7, 1972 (1973, *Proc. Entomol. Soc. Wash.*, 75(2): 255-256). Suffice it to say that President A. K. Burditt, Jr. served for "... about 5 minutes ..." (personal communication A. K. Burditt, Jr.) for it took him that long to announce that, with the 1972 ARS reorganization, he had been transferred away from the Washington area and thus would not be able to serve as ESW President during 1973. President Burditt appointed a committee to nominate a new President-Elect and passed the gavel and presidency to the then President-Elect V. E. Adler. President Adler served during all of 1973 with B. D. Burks as the President-Elect.

The photographs of the Past-Presidents were obtained from a variety of sources; the individuals themselves or their families, the SEL/SI collection of photographs now under the care of John M. Kingsolver, and the staff of the Entomological Society of America, College Park, Maryland. The copy negatives for all photographs not used "as is" have been turned over to John M. Kingsolver for deposition

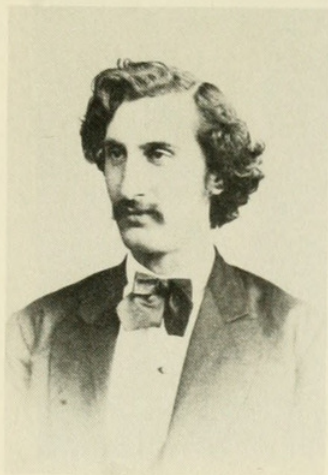
in the SEL/SI collection of photographs and are thus made available for future projects.

Past Honorary Presidents

E. A. Schwarz	1917-1928
L. O. Howard	1929-1950
C. L. Marlatt	1952-1954
R. E. Snodgrass	1955-1962
T. E. Snyder	1965-1970

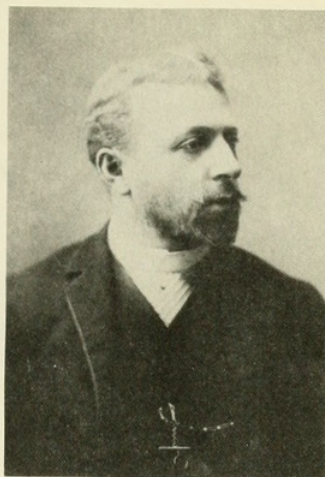
Past Honorary Members

H. G. Barber	1957-1959
A. C. Böving	1957
E. N. Cory	1966-1974
A. B. Gahan	1958-1959
A. S. Hoyt	1971-1974
M. D. Leonard	1975
R. A. St. George	1976-1982
T. E. Snyder	1961-1964
L. H. Weld	1961-1964



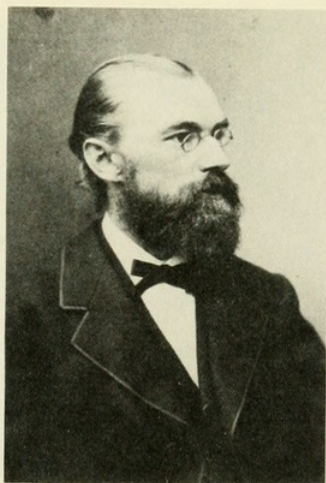
1884-1885

President	C. V. Riley
1st Vice-Pres.	J. G. Morris
2nd Vice-Pres.	G. Marx
Rec. Secretary	E. A. Schwarz
Corr. Secretary	L. O. Howard
Treasurer	B. P. Mann
Executive Comm.	A. J. Schafhirt
	W. S. Barnard
	P. R. Uhler



1886-1887

President	L. O. Howard
1st Vice-Pres.	J. G. Morris
2nd Vice-Pres.	G. Marx
Rec. Secretary	E. A. Schwarz
Corr. Secretary	J. B. Smith
Treasurer	B. P. Mann
Executive Comm.	C. V. Riley
	O. Lugger
	T. Pergande

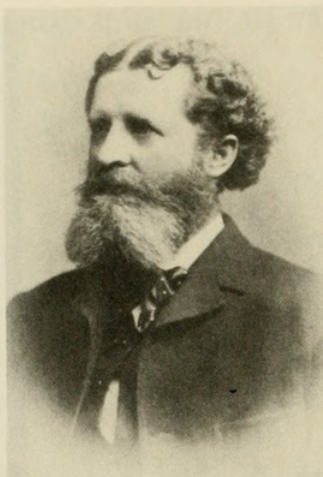


1888

President	E. A. Schwarz
1st Vice-Pres.	C. V. Riley
2nd Vice-Pres.	G. Marx
Rec. Secretary	J. B. Smith
Corr. Secretary	O. Lugger
Treasurer	B. P. Mann
Executive Comm.	L. O. Howard
	T. Pergande
	W. H. Fox

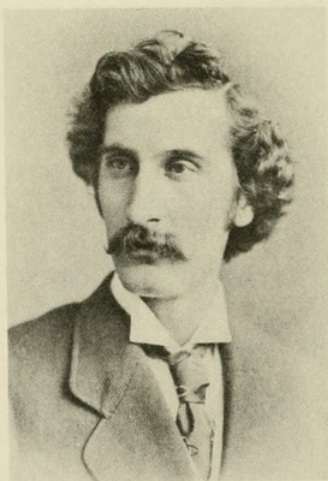
1889

President	E. A. Schwarz
1st Vice-Pres.	C. V. Riley
2nd Vice-Pres.	G. Marx
Rec. Secretary	W. H. Fox
Corr. Secretary	C. H. T. Townsend
Treasurer	B. P. Mann
Executive Comm.	L. O. Howard
	T. Pergande
	C. L. Marlatt



1890-1891

President	G. Marx
1st Vice-Pres.	C. V. Riley
2nd Vice-Pres.	L. O. Howard
Rec. Secretary	C. L. Marlatt
Corr. Secretary	C. H. T. Townsend
Treasurer	B. P. Mann
Executive Comm.	E. A. Schwarz
	O. Heidemann
	W. H. Fox

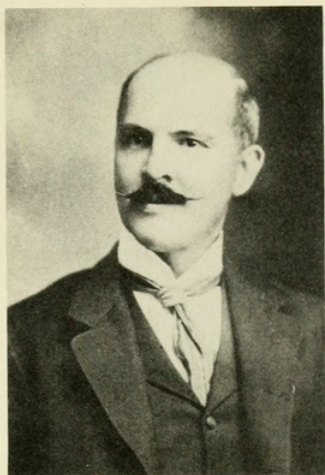


1892

President	C. V. Riley
1st Vice-Pres.	C. L. Marlatt
2nd Vice-Pres.	W. H. Ashmead
Rec. Secretary	N. Banks
Corr. Secretary	L. O. Howard
Treasurer	E. A. Schwarz
Executive Comm.	W. H. Fox
	G. Marx
	B. E. Fernow

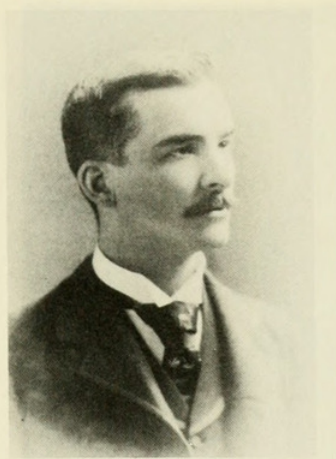
1893

President	C. V. Riley
1st Vice-Pres.	W. H. Ashmead
2nd Vice-Pres.	C. W. Stiles
Rec. Secretary	C. L. Marlatt
Corr. Secretary	L. O. Howard
Treasurer	E. A. Schwarz
Executive Comm.	W. H. Fox
	G. Marx
	B. E. Fernow



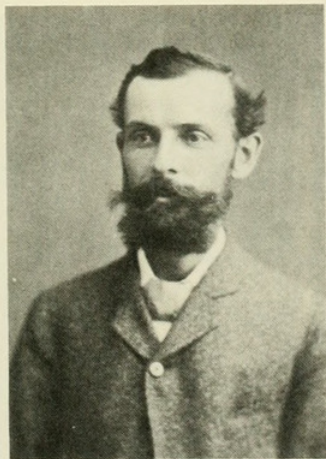
1894-1895

President	W. H. Ashmead
1st Vice-Pres.	T. N. Gill
2nd Vice-Pres.	C. L. Marlatt
Rec. Secretary	L. O. Howard
Corr. Secretary	F. H. Chittenden
Treasurer	E. A. Schwarz
Executive Comm.	G. Marx
	B. E. Fernow
	C. V. Riley



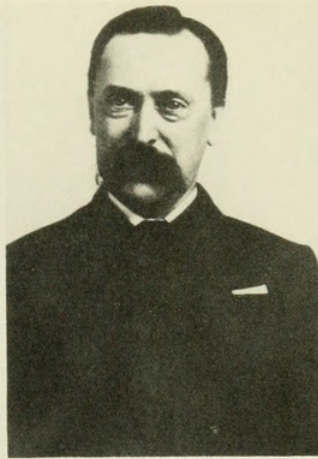
1896-1897

President	C. H. Marlatt
1st Vice-Pres.	T. N. Gill
2nd Vice-Pres.	H. G. Hubbard
Rec. Secretary	L. O. Howard
Corr. Secretary	F. Benton
Treasurer	E. A. Schwarz
Executive Comm.	W. H. Ashmead
	D. W. Coquillett
	C. W. Stiles



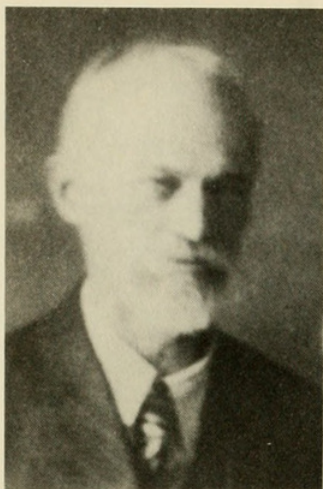
1898

President	H. G. Hubbard
1st Vice-Pres.	T. N. Gill
2nd Vice-Pres.	H. G. Dyar
Rec. Secretary	L. O. Howard
Corr. Secretary	F. Benton
Treasurer	E. A. Schwarz
Executive Comm.	C. L. Marlatt
	W. H. Ashmead
	F. H. Chittenden



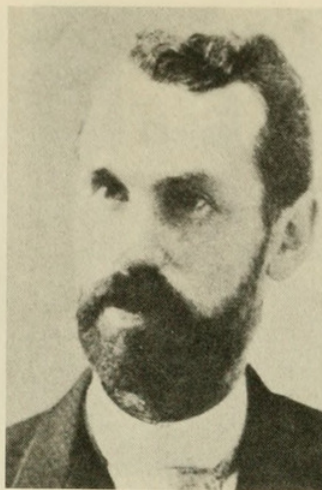
1899-1900

President	T. N. Gill
1st Vice-Pres.	H. G. Dyar
Rec. Secretary	L. O. Howard
Corr. Secretary	F. Benton
Treasurer	E. A. Schwarz
Executive Comm.	C. L. Marlatt
	W. H. Ashmead
	F. H. Chittenden



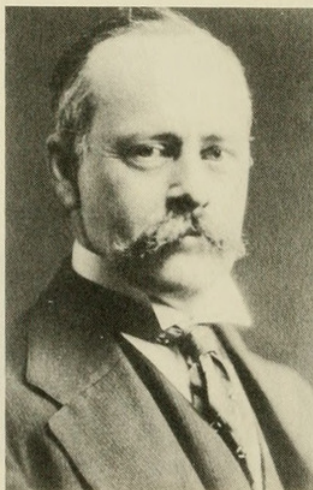
1901-1902

President	H. G. Dyar
1st Vice-Pres.	W. G. Johnson
2nd Vice-Pres.	E. A. Schwarz
Rec. Secretary	R. P. Currie
Corr. Secretary	F. Benton
Treasurer	J. D. Patten
Executive Comm.	L. O. Howard
	T. N. Gill
	C. L. Marlatt



1903-1904

President	D. W. Coquillett
1st Vice-Pres.	N. Banks
2nd Vice-Pres.	A. D. Hopkins
Rec. Secretary	R. P. Currie
Corr. Secretary	F. Benton
Treasurer	J. D. Patten
Executive Comm.	H. G. Dyar
	L. O. Howard
	C. L. Marlatt

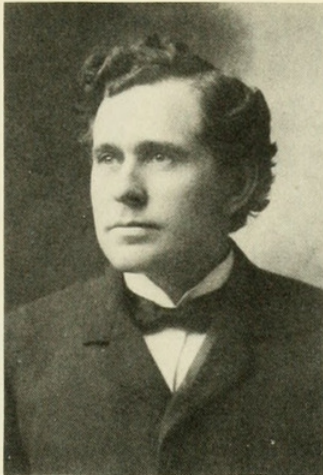


1905

President	N. Banks
1st Vice-Pres.	A. D. Hopkins
2nd Vice-Pres.	O. Heidemann
Rec. Secretary	R. P. Currie
Corr. Secretary	F. Benton
Treasurer	J. D. Patten
Executive Comm.	H. G. Dyar
	L. O. Howard
	C. L. Marlatt

1906

President	N. Banks
1st Vice-Pres.	A. D. Hopkins
2nd Vice-Pres.	O. Heidemann
Rec. Secretary	R. P. Currie
Corr. Secretary	E. S. G. Titus
Treasurer	J. D. Patten
Executive Comm.	H. G. Dyar
	L. O. Howard
	C. L. Marlatt

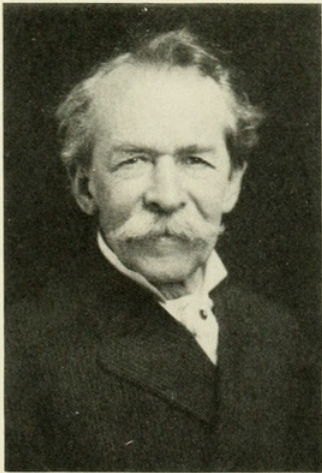


1907

President	A. D. Hopkins
1st Vice-Pres.	O. Heidemann
2nd Vice-Pres.	E. A. Schwarz
Rec. Secretary	W. F. Fiske
Corr. Secretary	J. G. Sanders
Treasurer	J. D. Patten
Executive Comm.	H. G. Dyar
	L. O. Howard
	C. L. Marlatt

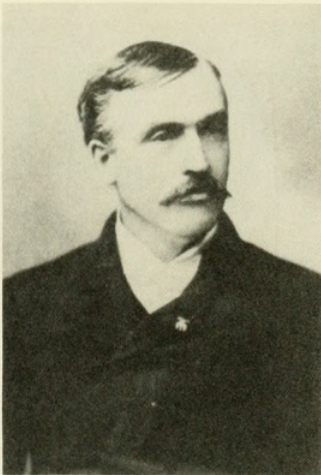
1908

President	A. D. Hopkins
1st Vice-Pres.	O. Heidemann
2nd Vice-Pres.	E. A. Schwarz
Rec. Secretary	H. E. Burke
Corr. Secretary	J. G. Sanders
Treasurer	J. D. Patten
Executive Comm.	H. G. Dyar
	L. O. Howard
	C. L. Marlatt



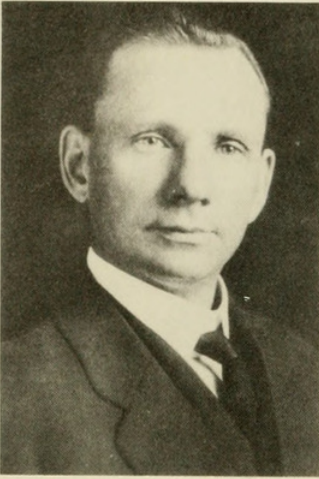
1909-1910

President	O. Heidemann
1st Vice-Pres.	F. M. Webster
2nd Vice-Pres.	A. L. Quaintance
Rec. Secretary	J. C. Crawford
Corr. Sec.-Treas.	E. F. Phillips
Executive Comm.	L. O. Howard
	C. L. Marlatt
	H. G. Dyar



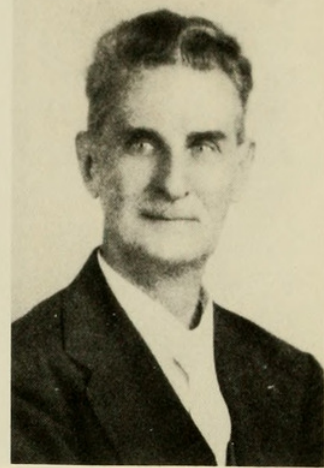
1911

President	F. M. Webster
1st Vice-Pres.	A. L. Quaintance
2nd Vice-Pres.	E. F. Phillips
Rec. Secretary	H. S. Barber
Corr. Sec.-Treas.	S. A. Rohwer
Executive Comm.	L. O. Howard
	E. A. Schwarz
	H. G. Dyar



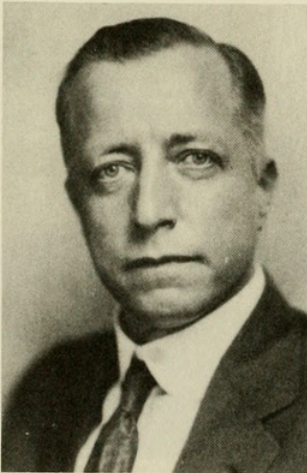
1912

President	A. L. Quaintance
1st Vice-Pres.	A. Busck
2nd Vice-Pres.	A. N. Caudell
Rec. Secretary	E. R. Sasscer
Corr. Sec.-Treas.	S. A. Rohwer
Editor	J. C. Crawford
Executive Comm.	N. Banks
	E. A. Schwarz
	H. G. Dyar



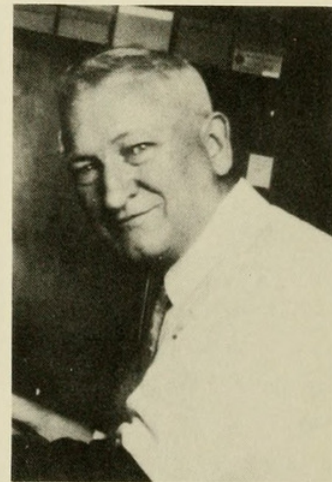
1913

President	A. Busck
1st Vice-Pres.	W. D. Hunter
2nd Vice-Pres.	A. N. Caudell
Rec. Secretary	E. R. Sasscer
Corr. Sec.-Treas.	S. A. Rohwer
Editor	W. D. Hunter
Executive Comm.	N. Banks
	E. A. Schwarz
	L. O. Howard



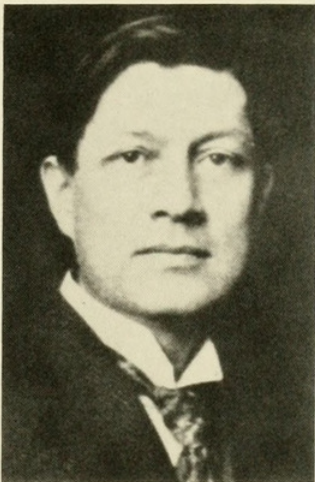
1914

President	W. D. Hunter
1st Vice-Pres.	A. N. Caudell
2nd Vice-Pres.	E. R. Sasscer
Rec. Secretary	W. B. Wood
Corr. Sec.-Treas.	S. A. Rohwer
Editor	W. D. Hunter
Executive Comm.	A. Busck
	E. A. Schwarz
	L. O. Howard



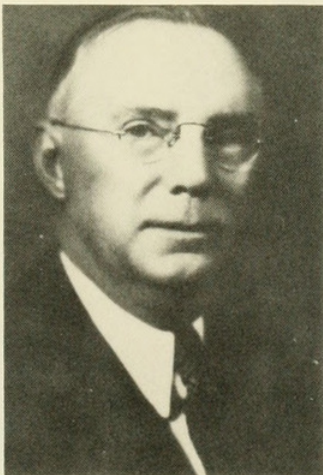
1915

President	A. N. Caudell
1st Vice-Pres.	C. R. Ely
2nd Vice-Pres.	E. R. Sasscer
Rec. Secretary	A. B. Gahan
Corr. Sec.-Treas.	S. A. Rohwer
Editor	J. C. Crawford
Executive Comm.	E. A. Schwarz
	A. L. Quaintance
	C. L. Marlatt



1916-1917

President	C. R. Ely
1st Vice-Pres.	E. R. Sasscer
2nd Vice-Pres.	F. Knab
Rec. Secretary	A. B. Gahan
Corr. Sec.-Treas.	S. A. Rohwer
Editor	J. C. Crawford
Executive Comm.	A. N. Caudell
	A. L. Quaintance
	W. D. Hunter

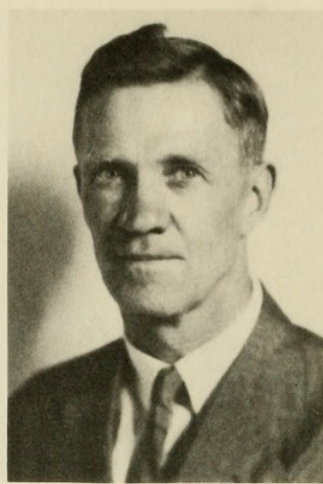
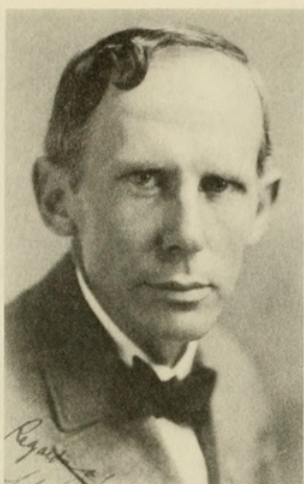


1918

President	E. R. Sasscer
1st Vice-Pres.	F. Knab
2nd Vice-Pres.	W. R. Walton
Rec. Secretary	A. B. Gahan
Corr. Sec.-Treas.	S. A. Rohwer
Editor	A. C. Baker
Executive Comm.	A. N. Caudell
	A. L. Quaintance
	C. R. Ely

1919

President	E. R. Sasscer
1st Vice-Pres.	W. R. Walton
2nd Vice-Pres.	A. B. Gahan
Rec. Secretary	R. A. Cushman
Corr. Sec.-Treas.	S. A. Rohwer
Editor	A. C. Baker
Executive Comm.	A. N. Caudell
	A. L. Quaintance
	C. R. Ely

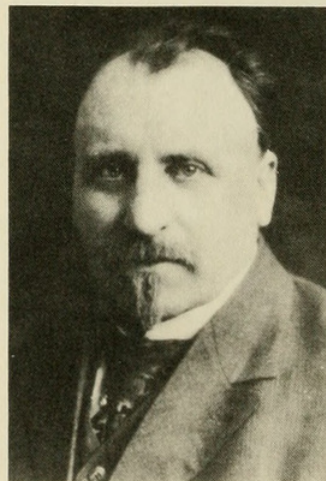
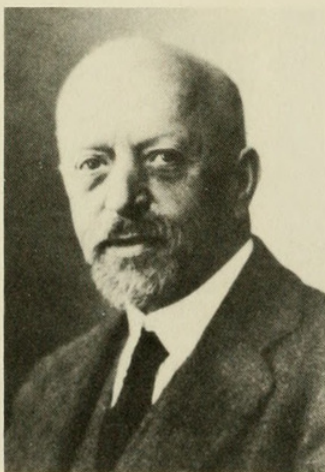


1920-1921

President	W. R. Walton
1st Vice-Pres.	A. B. Gahan
2nd Vice-Pres.	A. G. Böving
Rec. Secretary	R. A. Cushman
Corr. Sec.-Treas.	S. A. Rohwer
Editor	A. C. Baker
Executive Comm.	A. N. Caudell
	A. L. Quaintance
	E. R. Sasscer

1922

President	A. B. Gahan
1st Vice-Pres.	A. G. Böving
2nd Vice-Pres.	R. A. Cushman
Rec. Secretary	C. T. Greene
Corr. Sec.-Treas.	S. A. Rohwer
Editor	A. C. Baker
Executive Comm.	A. N. Caudell
	A. L. Quaintance
	J. M. Aldrich

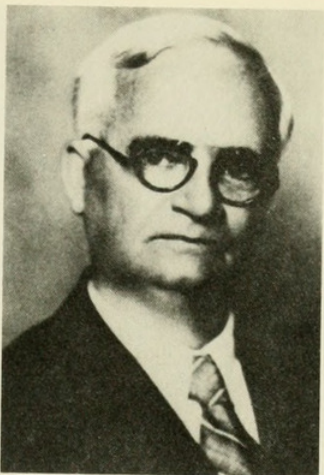
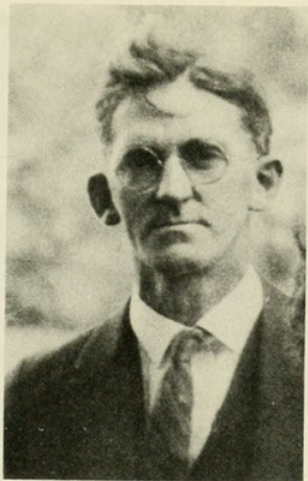


1923

President	L. O. Howard
1st Vice-Pres.	A. G. Böving
2nd Vice-Pres.	R. A. Cushman
Rec. Secretary	C. T. Greene
Corr. Sec.-Treas.	S. A. Rohwer
Editor	A. C. Baker
Executive Comm.	A. N. Caudell
	A. L. Quaintance
	J. M. Aldrich

1924

President	A. G. Böving
1st Vice-Pres.	R. A. Cushman
2nd Vice-Pres.	J. M. Aldrich
Rec. Secretary	C. T. Greene
Corr. Sec.-Treas.	S. A. Rohwer
Editor	C. Heinrich
Executive Comm.	A. N. Caudell
	W. R. Walton
	J. A. Hyslop

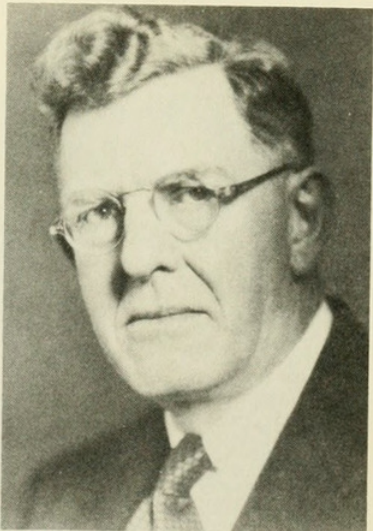


1925

President	R. A. Cushman
1st Vice-Pres.	J. M. Aldrich
2nd Vice-Pres.	J. A. Hyslop
Rec. Secretary	C. T. Greene
Corr. Sec.-Treas.	S. A. Rohwer
Editor	C. Heinrich
Executive Comm.	A. N. Caudell
	W. R. Walton
	J. E. Graf

1926

President	J. M. Aldrich
1st Vice-Pres.	J. A. Hyslop
2nd Vice-Pres.	J. E. Graf
Rec. Secretary	C. T. Greene
Corr. Sec.-Treas.	S. A. Rowher
Editor	C. Heinrich
Executive Comm.	W. R. Walton
	A. N. Caudell
	T. E. Snyder

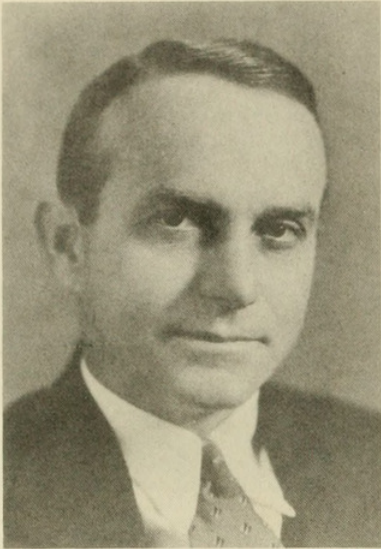


1927

President	J. A. Hyslop
1st Vice-Pres.	J. E. Graf
2nd Vice-Pres.	A. C. Baker
Rec. Secretary	J. S. Wade
Corr. Sec.-Treas.	S. A. Rohwer
Editor	W. R. Walton
Executive Comm.	C. T. Greene
	A. N. Caudell
	T. E. Snyder

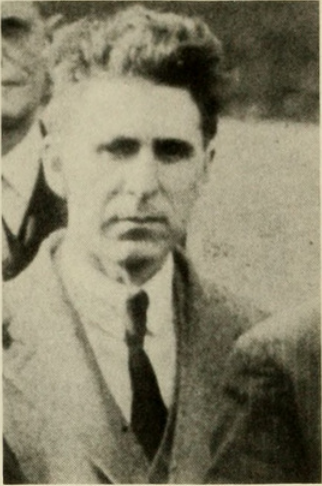
1928

President	S. A. Rohwer
1st Vice-Pres.	J. E. Graf
2nd Vice-Pres.	A. C. Baker
Rec. Secretary	J. S. Wade
Corr. Sec.-Treas.	S. A. Rohwer
Editor	W. R. Walton
Executive Comm.	C. T. Greene
	A. N. Caudell
	T. E. Snyder



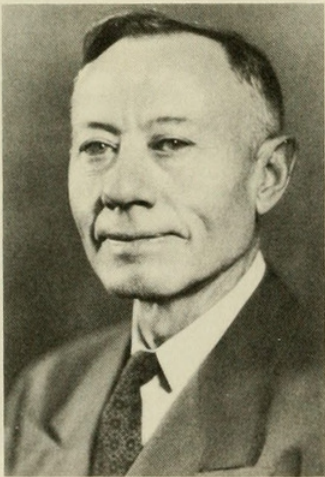
1929-1930

President	J. E. Graf
1st Vice-Pres.	A. C. Baker
2nd Vice-Pres.	F. C. Bishopp
Rec. Secretary	J. S. Wade
Corr. Sec.-Treas.	S. A. Rohwer
Editor	W. R. Walton
Executive Comm.	C. T. Greene
	A. N. Caudell
	T. E. Snyder



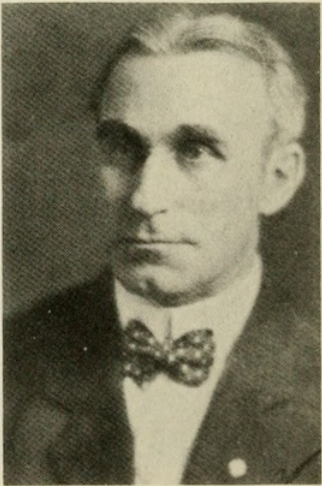
1931

President	A. C. Baker
1st Vice-Pres.	F. C. Bishopp
2nd Vice-Pres.	C. T. Greene
Rec. Secretary	J. S. Wade
Corr. Sec.-Treas.	S. A. Rohwer
Editor	W. R. Walton
Executive Comm.	A. N. Caudell
	T. E. Snyder
	W. H. Larrimer



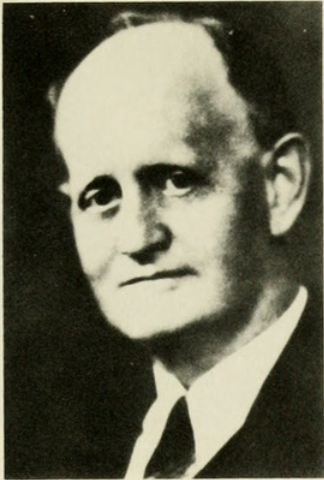
1932

President	F. C. Bishopp
1st Vice-Pres.	C. T. Greene
2nd Vice-Pres.	J. S. Wade
Rec. Secretary	F. M. Wadley
Corr. Sec.-Treas.	S. A. Rohwer
Editor	W. R. Walton
Executive Comm.	A. N. Caudell
	T. E. Snyder
	W. H. Larrimer



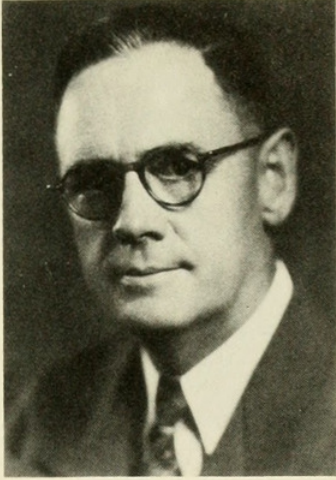
1933

President	C. T. Greene
1st Vice-Pres.	J. S. Wade
2nd Vice-Pres.	B. A. Porter
Rec. Secretary	F. M. Wadley
Corr. Sec.-Treas.	S. A. Rohwer
Editor	W. R. Walton
Executive Comm.	W. H. Larrimer
	S. B. Fracker
	H. E. Ewing



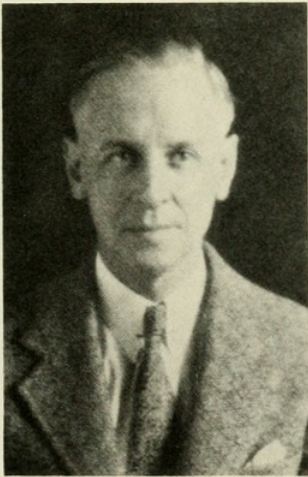
1934

President	J. S. Wade
1st Vice-Pres.	B. A. Porter
2nd Vice-Pres.	S. B. Fracker
Rec. Secretary	F. M. Wadley
Corr. Sec.-Treas.	S. A. Rohwer
Editor	W. R. Walton
Executive Comm.	W. H. Larrimer
	H. E. Ewing
	F. L. Campbell



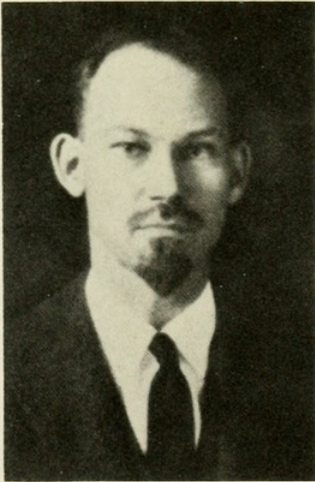
1935

President	B. A. Porter
1st Vice-Pres.	S. B. Fracker
2nd Vice-Pres.	N. E. McIndoo
Rec. Secretary	P. W. Oman
Corr. Sec.-Treas.	J. E. Graf
Editor	W. R. Walton
Executive Comm.	S. A. Rohwer
	H. E. Ewing
	J. S. Wade



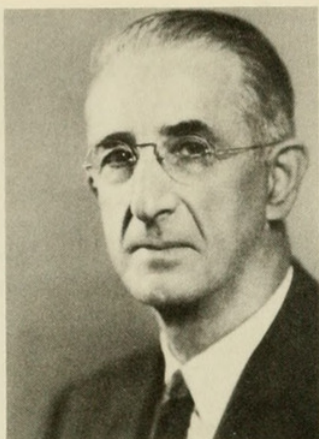
1936

President	S. B. Fracker
1st Vice-Pres.	N. E. McIndoo
2nd Vice-Pres.	H. Morrison
Rec. Secretary	H. H. Richardson
Corr. Sec.-Treas.	J. E. Graf
Editor	W. R. Walton
Executive Comm.	H. E. Ewing
	J. S. Wade
	B. A. Porter



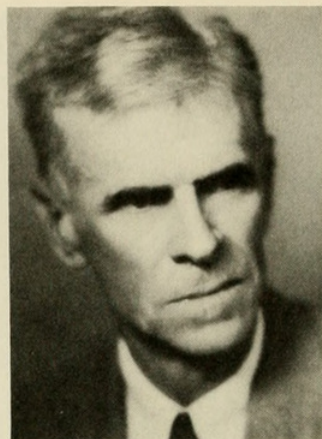
1937

President	N. E. McIndoo
1st Vice-Pres.	E. A. Back
2nd Vice-Pres.	R. E. Snodgrass
Rec. Secretary	C. Ford
Corr. Secretary	D. J. Caffrey
Treasurer	H. E. Ewing
Editor	W. R. Walton
Executive Comm.	J. S. Wade
	B. A. Porter
	S. B. Fracker



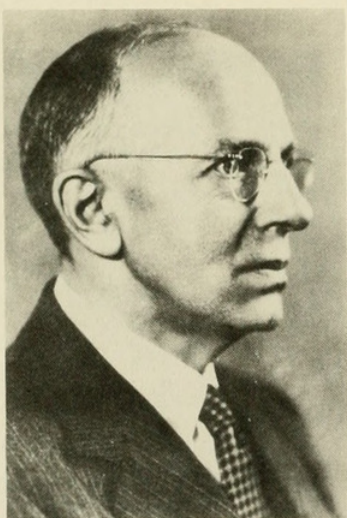
1938

President	E. A. Back
1st Vice-Pres.	R. E. Snodgrass
2nd Vice-Pres.	L. A. Strong
Rec. Secretary	A. B. Gurney
Corr. Secretary	D. J. Caffrey
Treasurer	H. E. Ewing
Editor	W. R. Walton
Executive Comm.	B. A. Porter
	S. B. Fracker
	N. E. McIndoo



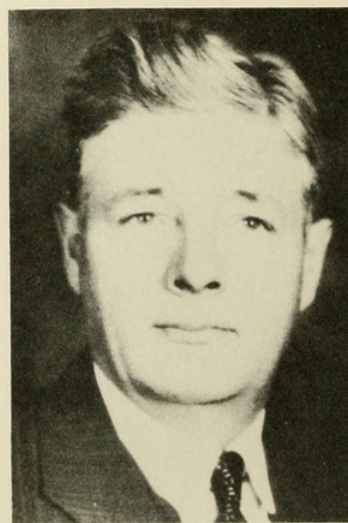
1939

President	R. E. Snodgrass
1st Vice-Pres.	L. A. Strong
2nd Vice-Pres.	C. F. W. Muesebeck
Rec. Secretary	A. B. Gurney
Corr. Secretary	D. J. Caffrey
Treasurer	H. E. Ewing
Editor	W. R. Walton
Executive Comm.	S. B. Fracker
	N. E. McIndoo
	E. A. Back



1940

President	C. F. W. Muesebeck
1st Vice-Pres.	L. A. Strong
2nd Vice-Pres.	H. E. Ewing
Rec. Secretary	A. B. Gurney
Corr. Secretary	D. J. Caffrey
Treasurer	W. B. Wood
Editor	W. R. Walton
Executive Comm.	S. B. Fracker
	E. A. Back
	R. E. Snodgrass



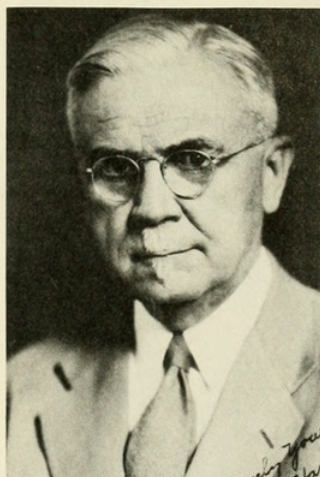
1941

President	H. E. Ewing
1st Vice-Pres.	E. N. Cory
2nd Vice-Pres.	R. W. Harned
Rec. Secretary	A. B. Gurney
Corr. Secretary	F. W. Poos
Treasurer	W. B. Wood
Editor	W. R. Walton
Executive Comm.	E. A. Back
	R. E. Snodgrass
	C. F. W. Muesebeck



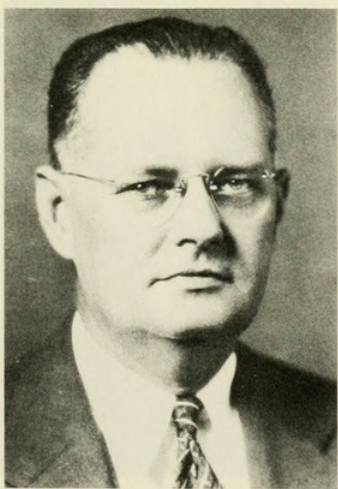
1942

President	E. N. Cory
1st Vice-Pres.	R. W. Harned
2nd Vice-Pres.	P. N. Annand
Rec. Secretary	A. B. Gurney
Corr. Secretary	F. M. Wadley
Treasurer	L. G. Baumhofer
Editor	W. R. Walton
Executive Comm.	R. E. Snodgrass
	C. F. W. Muesebeck
	H. E. Ewing



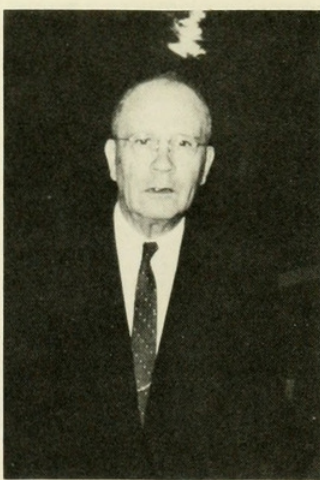
1943

President	R. W. Harned
1st Vice-Pres.	P. N. Annand
2nd Vice-Pres.	F. W. Poos
Rec. Secretary	W. H. Anderson
Corr. Secretary	F. W. Wadley
Treasurer	G. I. Haeussler
Editor	A. Stone
Executive Comm.	C. F. W. Muesebeck
	H. E. Ewing
	E. N. Cory



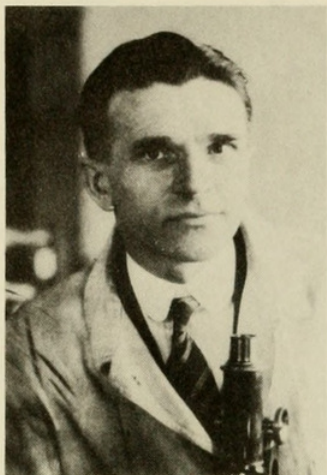
1944

President	P. N. Annand
1st Vice-Pres.	F. W. Poos
2nd Vice-Pres.	C. A. Weigel
Rec. Secretary	I. L. Hawes
Corr. Secretary	F. M. Wadley
Treasurer	G. J. Haeussler
Editor	A. Stone
Executive Comm.	H. E. Ewing
	E. N. Cory
	R. W. Harned



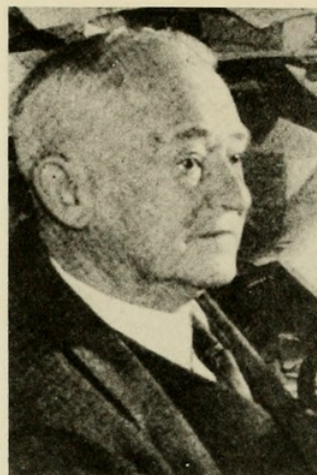
1945

President	F. W. Poos
1st Vice-Pres.	C. A. Weigel
2nd Vice-Pres.	A. H. Clark
Rec. Secretary	I. L. Hawes
Corr. Secretary	F. M. Wadley
Treasurer	L. B. Reed
Editor	A. Stone
Executive Comm.	E. N. Cory
	R. W. Harned
	P. N. Annand



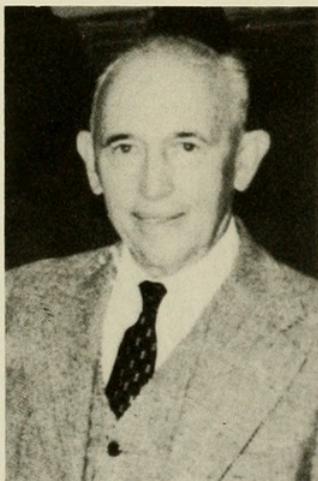
1946

President	C. A. Weigel
1st Vice-Pres.	A. H. Clark
2nd Vice-Pres.	E. H. Siegler
Rec. Secretary	I. L. Hawes
Corr. Secretary	R. I. Sailer
Treasurer	L. B. Reed
Editor	A. Stone
Executive Comm.	R. W. Harned
	P. N. Annand
	F. W. Poos



1947

President	A. H. Clark
1st Vice-Pres.	E. H. Siegler
2nd Vice-Pres.	T. E. Snyder
Rec. Secretary	I. L. Hawes
Corr. Secretary	R. I. Sailer
Treasurer	L. B. Reed
Editor	A. Stone
Executive Comm.	P. N. Annand
	F. W. Poos
	C. A. Weigel



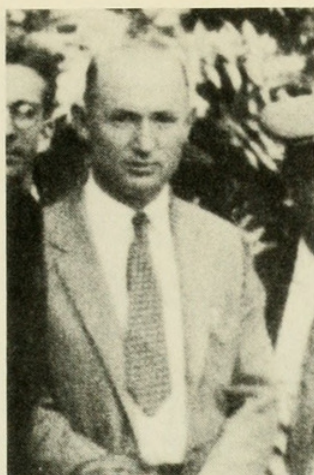
1948

President	E. H. Siegler
1st Vice-Pres.	T. E. Snyder
2nd Vice-Pres.	W. B. Wood
Rec. Secretary	I. L. Hawes
Corr. Secretary	R. I. Sailer
Treasurer	H. Baker
Editor	K. V. Krombein
Executive Comm.	F. W. Poos
	C. A. Weigel
	A. H. Clark



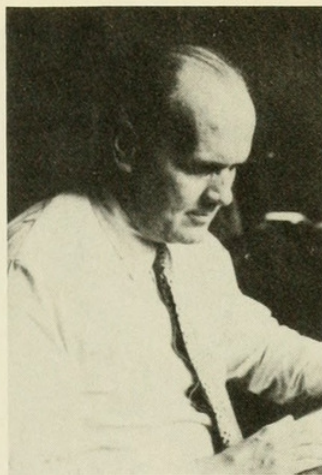
1949

President	T. E. Snyder
1st Vice-Pres.	W. B. Wood
2nd Vice-Pres.	A. Stone
Rec. Secretary	H. L. Trembley
Corr. Secretary	A. B. Gurney
Treasurer	H. Baker
Editor	K. V. Krombein
Executive Comm.	C. A. Weigel
	A. H. Clark
	E. H. Siegler



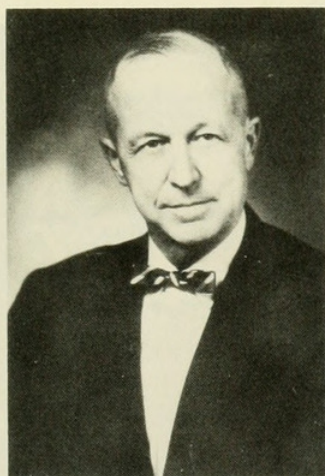
1950

President	W. B. Wood
1st Vice-Pres.	A. Stone
2nd Vice-Pres.	P. W. Oman
Rec. Secretary	H. L. Trembley
Corr. Secretary	R. W. Sherman
Treasurer	R. H. Nelson
Editor	K. V. Krombein
Custodian	H. Sollers
Executive Comm.	A. H. Clark
	E. H. Siegler
	T. E. Snyder



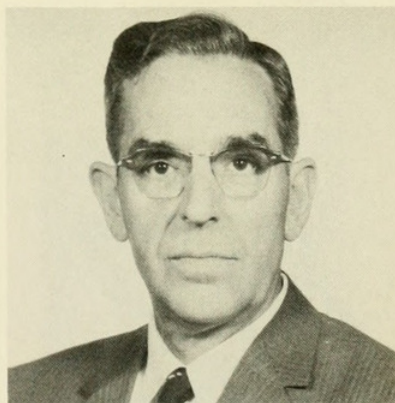
1951

President	A. Stone
1st Vice-Pres.	P. W. Oman
2nd Vice-Pres.	W. D. Reed
Rec. Secretary	G. B. Vogt
Corr. Secretary	R. W. Sherman
Treasurer	R. H. Nelson
Editor	K. V. Krombein
Custodian	H. Sollers
Executive Comm.	E. H. Siegler
	T. E. Snyder
	W. B. Wood



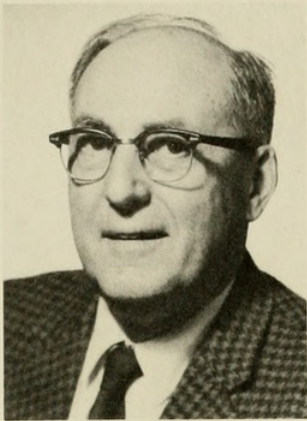
1952

President	W. D. Reed
1st Vice-Pres.	D. J. Caffrey
2nd Vice-Pres.	W. H. Anderson
Rec. Secretary	K. O'Neill
Corr. Secretary	A. M. Vance
Treasurer	R. H. Nelson
Editor	B. D. Burks
Custodian	H. Sollers
Executive Comm.	T. E. Snyder
	W. B. Wood
	A. Stone



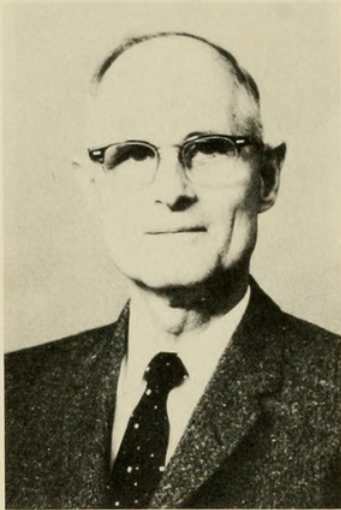
1953

President	W. H. Anderson
1st Vice-Pres.	A. B. Gurney
2nd Vice-Pres.	T. L. Bissell
Rec. Secretary	K. O'Neill
Corr. Secretary	A. M. Vance
Treasurer	E. P. Reagan
Editor	B. D. Burks
Custodian	H. J. Conkle
Executive Comm.	W. B. Wood
	A. Stone
	W. D. Reed



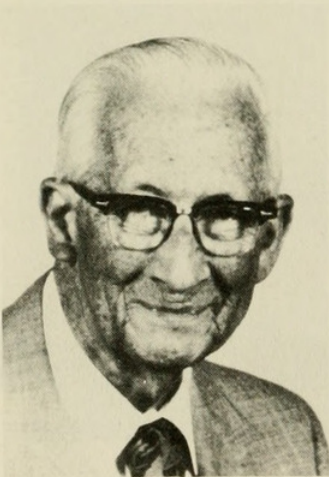
1954

President	A. B. Gurney
1st Vice-Pres.	T. L. Bissell
2nd Vice-Pres.	R. A. St. George
Rec. Secretary	K. O'Neill
Corr. Secretary	L. M. Russell
Treasurer	P. X. Peltier
Editor	B. D. Burks
Custodian	H. J. Conkle
Program Chmn.	K. A. Haines
Executive Comm.	A. Stone
	W. D. Reed
	W. H. Anderson



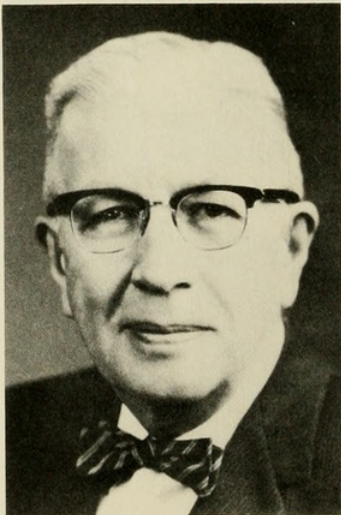
1955

President	T. L. Bissell
1st Vice-Pres.	R. A. St. George
2nd Vice-Pres.	F. L. Campbell
Rec. Secretary	K. O'Neill
Corr. Secretary	L. M. Russell
Treasurer	P. X. Peltier
Editor	R. H. Foote
Custodian	H. J. Conkle
Program Chmn.	J. F. G. Clarke
Executive Comm.	W. D. Reed
	W. H. Anderson
	A. B. Gurney



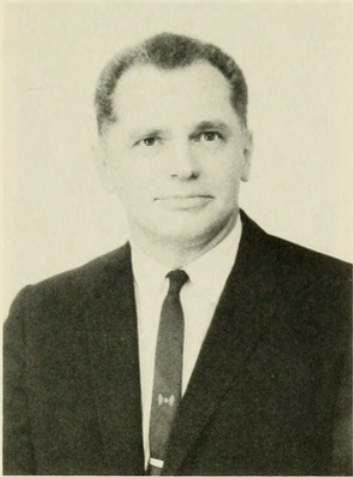
1956

President	R. A. St. George
1st Vice-Pres.	F. L. Campbell
2nd Vice-Pres.	R. I. Sailer
Rec. Secretary	K. O'Neill
Corr. Secretary	K. Dorward
Treasurer	P. X. Peltier
Editor	R. H. Foote
Custodian	H. J. Conkle
Program Chmn.	J. F. G. Clarke
Executive Comm.	W. H. Anderson
	A. B. Gurney
	T. L. Bissell



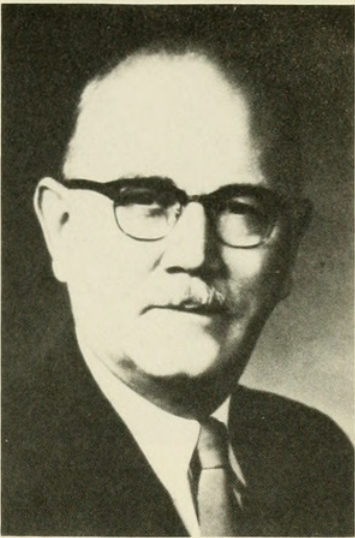
1957

President	F. L. Campbell
1st Vice-Pres.	R. I. Sailer
2nd Vice-Pres.	R. H. Nelson
Rec. Secretary	K. O'Neill
Corr. Secretary	K. Dorward
Treasurer	F. P. Harrison
Editor	A. V. Renk
Custodian	H. J. Conkle
Program Chmn.	J. F. G. Clarke
Executive Comm.	A. B. Gurney
	T. L. Bissell
	R. A. St. George



1958

President	R. I. Sailer
1st Vice-Pres.	R. H. Nelson
2nd Vice-Pres.	P. W. Oman
Rec. Secretary	H. Sollers
Corr. Secretary	P. A. Woke
Treasurer	F. P. Harrison
Editor	R. H. Foote
Custodian	H. J. Conkle
Program Chmn.	J. G. Rozen
Executive Comm.	T. L. Bissell
	R. A. St. George
	F. L. Campbell



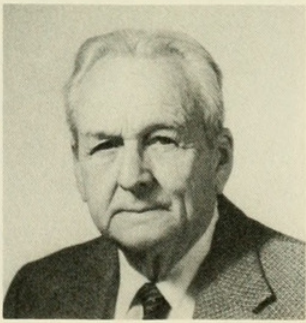
1959

President	R. H. Nelson
President-Elect	P. W. Oman
Rec. Secretary	H. Sollers
Corr. Secretary	P. A. Woke
Treasurer	P. Piquette
Editor	R. H. Foote
Custodian	H. J. Conkle
Program Chmn.	J. H. Fales
Membership Chmn.	A. B. Gurney



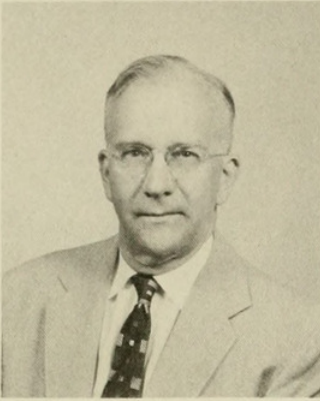
1960

President	P. W. Oman
President-Elect	J. F. G. Clarke
Rec. Secretary	E. B. Thurman
Corr. Secretary	P. A. Woke
Treasurer	P. Piquette
Editor	R. H. Foote
Custodian	H. J. Conkle
Program Chmn.	C. W. McComb
Membership Chmn.	W. S. Murray



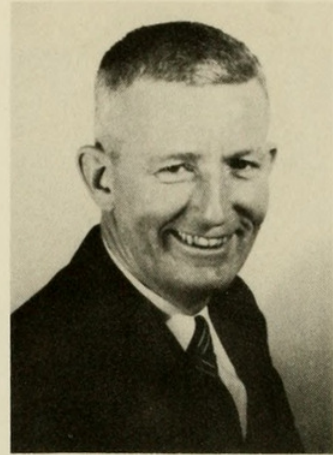
1961

President	J. F. G. Clarke
President-Elect	H. H. Shepard
Rec. Secretary	E. B. Thurman
Corr. Secretary	P. A. Woke
Treasurer	P. Piquette
Editor	R. H. Foote
Custodian	H. J. Conkle
Program Chmn.	T. McIntyre
Membership Chmn.	W. S. Murray



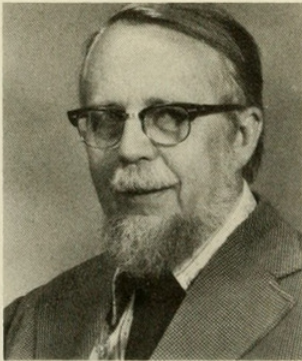
1962

President	H. H. Shepard
President-Elect	W. E. Bickley
Rec. Secretary	O. S. Flint, Jr.
Corr. Secretary	P. A. Woke
Treasurer	C. Blickenstaff
Editor	R. H. Foote
Custodian	H. J. Conkle
Program Chmn.	R. H. Arnett, Jr.
Membership Chmn.	W. S. Murray



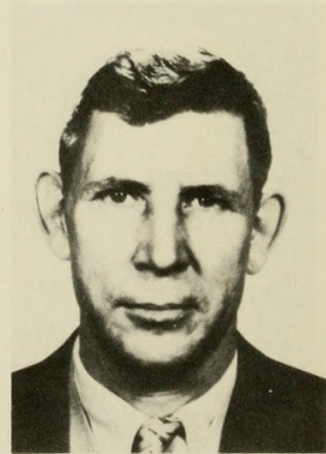
1963

President	W. E. Bickley
President-Elect	R. H. Arnett, Jr.
Rec. Secretary	O. S. Flint, Jr.
Corr. Secretary	P. J. Spangler
Treasurer	C. Blickenstaff
Editor	J. L. Herring
Custodian	H. J. Conkle
Membership Chmn.	G. E. Cantwell



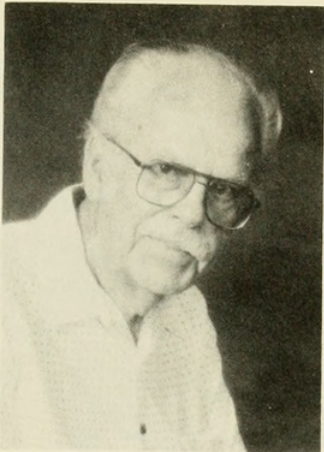
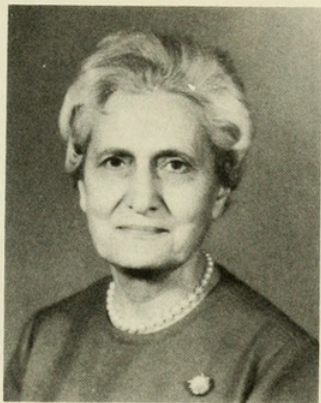
1964

President	R. H. Arnett, Jr.
President-Elect	P. A. Woke
Rec. Secretary	W. D. Duckworth
Corr. Secretary	P. J. Spangler
Treasurer	C. Blickenstaff
Editor	J. L. Herring
Custodian	H. J. Conkle
Program Chmn.	R. J. Barker
Membership Chmn.	G. E. Cantwell



1965

President	P. A. Woke
President-Elect	L. M. Russell
Rec. Secretary	W. D. Duckworth
Corr. Secretary	D. M. Anderson
Treasurer	C. Blickenstaff
Editor	J. L. Herring
Custodian	R. L. Smiley
Program Chmn.	V. E. Adler
Membership Chmn.	G. E. Cantwell

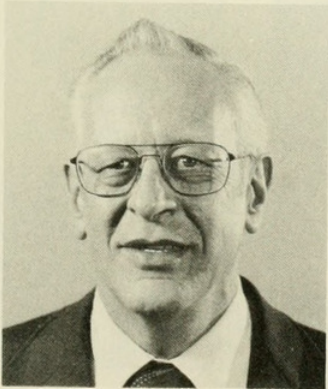


1966

1967

President L. M. Russell
President-Elect L. G. Davis
Rec. Secretary W. D. Duckworth
Corr. Secretary D. M. Anderson
Treasurer A. K. Burditt, Jr.
Editor J. L. Herring
Custodian R. L. Smiley
Program Chmn. V. E. Adler
Membership Chmn. W. B. Hull

President L. G. Davis
President-Elect R. H. Foote
Rec. Secretary R. A. Bram
Corr. Secretary D. R. Smith
Treasurer A. K. Burditt, Jr.
Editor J. L. Herring
Custodian R. L. Smiley
Program Chmn. V. E. Adler
Membership Chmn. W. B. Hull

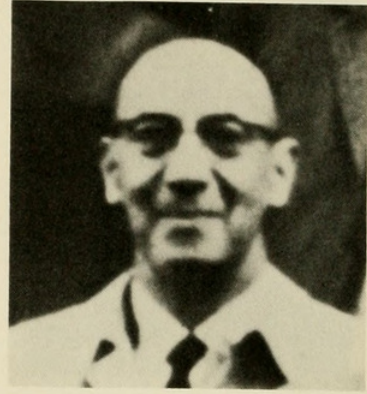
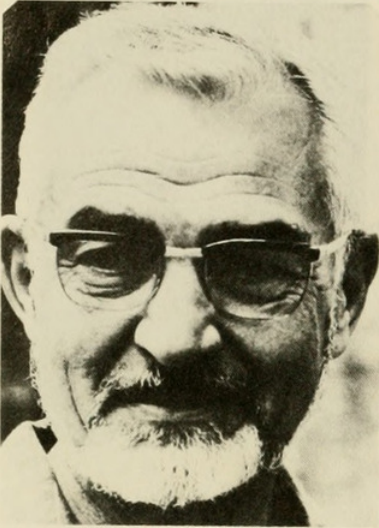


1968

1969

President R. H. Foote
President-Elect H. Sollers-Riedel
Rec. Secretary R. A. Bram
Corr. Secretary D. R. Smith
Treasurer A. K. Burditt, Jr.
Editor P. M. Marsh
Custodian R. L. Smiley
Program Chmn. R. G. Oakley
Membership Chmn. W. B. Hull

President H. Sollers-Riedel
President-Elect K. V. Krombein
Rec. Secretary J. A. Davidson
Corr. Secretary D. R. Smith
Treasurer A. K. Burditt, Jr.
Editor P. M. Marsh
Custodian R. D. Gordon
Program Chmn. D. H. Messersmith
Membership Chmn. H I. Rainwater

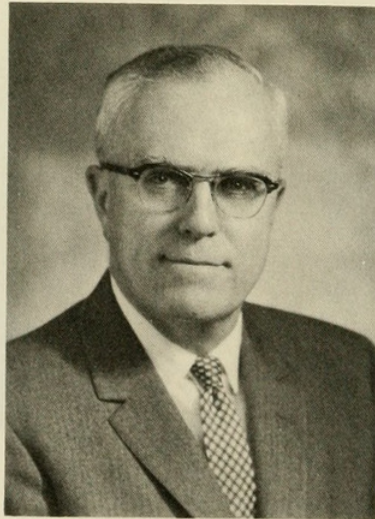


1970

President	K. V. Krombein
President-Elect	E. J. Hambleton
Rec. Secretary	J. A. Davidson
Corr. Secretary	D. R. Smith
Treasurer	A. K. Burditt, Jr.
Editor	P. M. Marsh
Custodian	R. D. Gordon
Program Chmn.	A. B. Gurney
Membership Chmn.	H I. Rainwater

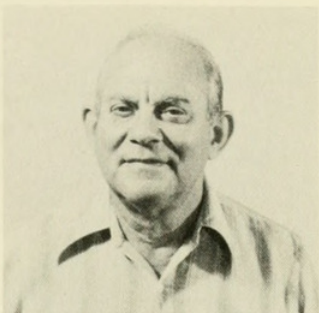
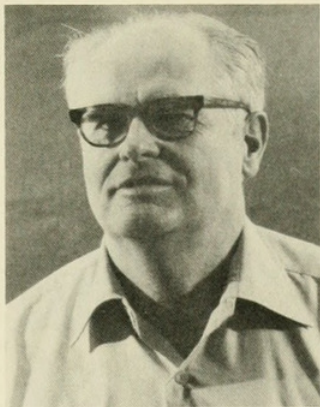
1971

President	E. J. Hambleton
President-Elect	C. W. Sabrosky
Rec. Secretary	D. M. Caron
Corr. Secretary	D. R. Smith
Treasurer	T. J. Spilman
Editor	P. M. Marsh
Custodian	R. D. Gordon
Program Chmn.	F. E. Wood
Membership Chmn.	H I. Rainwater



1972

President	C. W. Sabrosky
President-Elect	A. K. Burditt, Jr.
Rec. Secretary	D. M. Caron
Corr. Secretary	D. R. Smith
Treasurer	T. J. Spilman
Editor	P. M. Marsh
Custodian	R. D. Gordon
Program Chmn.	F. E. Wood
Membership Chmn.	H I. Rainwater

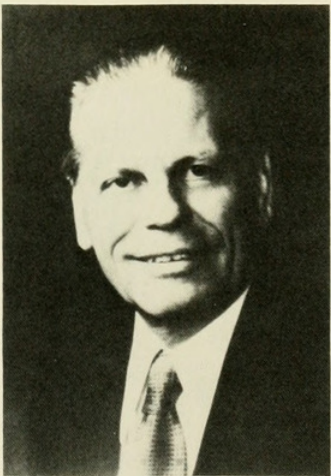
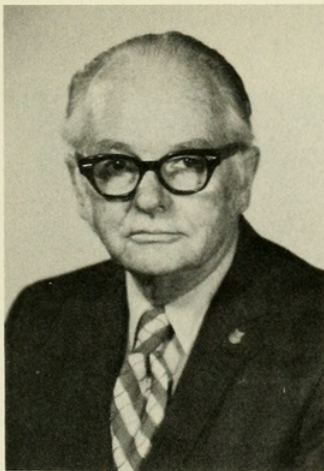


1973

President	A. K. Burditt, Jr.
President-Elect	V. E. Adler
Rec. Secretary	R. J. Gagné
Corr. Secretary	T. L. Erwin
Treasurer	T. J. Spilman
Editor	L. Knutson
Custodian	D. R. Miller
Program Chmn.	F. E. Wood
Membership Chmn.	H I. Rainwater
Hospitality Chmn.	H. Sollers-Riedel

1973

President	V. E. Adler
President-Elect	B. D. Burks
Rec. Secretary	R. J. Gagné
Corr. Secretary	T. L. Erwin
Treasurer	T. J. Spilman
Editor	L. Knutson
Custodian	D. R. Miller
Program Chmn.	F. E. Wood
Membership Chmn.	H I. Rainwater
Hospitality Chmn.	H. Sollers-Riedel

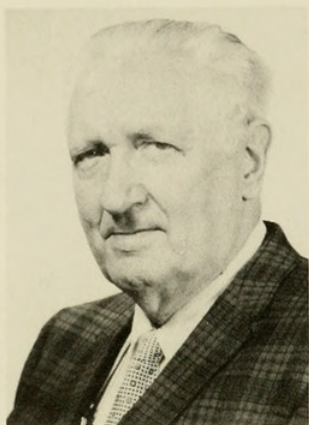


1974

President	B. D. Burks
President-Elect	H I. Rainwater
Rec. Secretary	R. J. Gagné
Corr. Secretary	T. L. Erwin
Treasurer	T. J. Spilman
Editor	L. Knutson
Custodian	D. R. Miller
Program Chmn.	D. R. Davis
Membership Chmn.	J. M. Kingsolver
Hospitality Chmn.	H. Sollers-Riedel

1975

President	H I. Rainwater
President-Elect	G. C. Steyskal
Rec. Secretary	F. C. Thompson
Corr. Secretary	R. J. Gagné
Treasurer	T. J. Spilman
Editor	L. Knutson
Custodian	D. R. Miller
Program Chmn.	D. R. Davis
Membership Chmn.	J. M. Kingsolver
Hospitality Chmn.	H. Sollers-Reidel



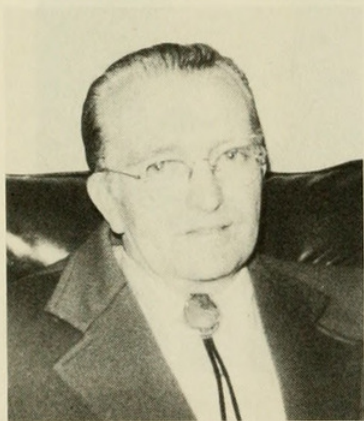
1976

President	G. C. Steyskal
President-Elect	M. J. Ramsay
Rec. Secretary	G. F. Hevel
Corr. Secretary	D. R. Whitehead
Treasurer	F. C. Thompson
Editor	L. V. Knutson
Custodian	D. R. Miller
Program Chmn.	J. L. Hellman
Membership Chmn.	J. M. Kingsolver
Hospitality Chmn.	H. Sollers-Reidel



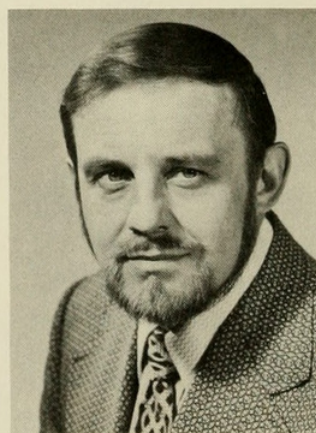
1977

President	M. J. Ramsay
President-Elect	D. W. S. Sutherland
Rec. Secretary	W. N. Mathis
Corr. Secretary	D. R. Whitehead
Treasurer	F. C. Thompson
Editor	M. B. Stoetzel
Custodian	D. R. Miller
Program Chmn.	J. L. Hellman
Membership Chmn.	J. A. Utmar
Hospitality Chmn.	H. Sollers-Reidel



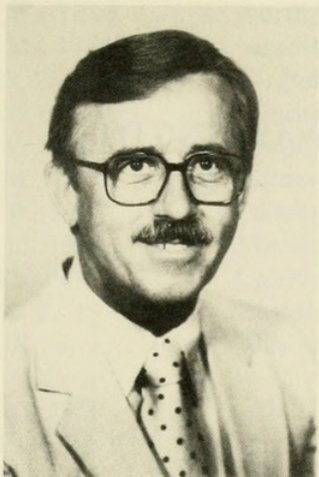
1978

President	D. W. S. Sutherland
President-Elect	D. R. Davis
Rec. Secretary	W. N. Mathis
Corr. Secretary	D. R. Whitehead
Treasurer	F. C. Thompson
Editor	M. B. Stoetzel
Custodian	S. Nakahara
Program Chmn.	V. E. Adler
Membership Chmn.	J. A. Utmar
Hospitality Chmn.	H. Sollers-Riedel



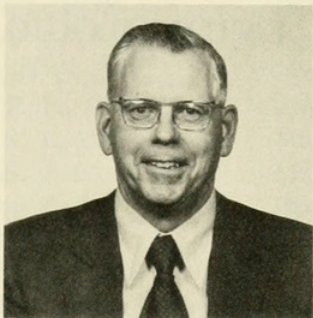
1979

President	D. R. Davis
President-Elect	T. J. Spilman
Rec. Secretary	W. N. Mathis
Corr. Secretary	M. B. Davis
Treasurer	F. C. Thompson
Editor	M. B. Stoetzel
Custodian	S. Nakahara
Program Chmn.	M. Faran
Membership Chmn.	J. A. Utmar
Hospitality Chmn.	H. Sollers-Riedel



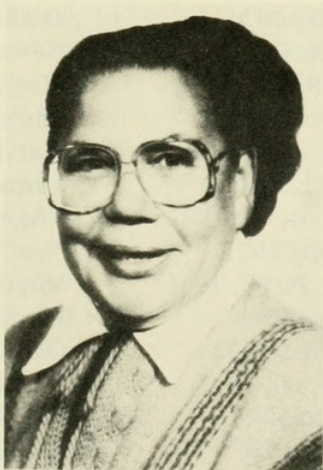
1980

President	T. J. Spilman
President-Elect	J. E. Lipes
Rec. Secretary	D. A. Nickle
Corr. Secretary	M. B. Davis
Treasurer	F. C. Thompson
Editor	D. R. Smith
Custodian	S. Nakahara
Program Chmn.	M. Faran
Membership Chmn.	J. A. Utmar
Hospitality Chmn.	H. Sollers-Riedel



1981

President	J. E. Lipes
President-Elect	M. S. Collins
Rec. Secretary	D. A. Nickle
Corr. Secretary	M. B. Davis
Treasurer	F. C. Thompson
Editor	D. R. Smith
Custodian	S. Nakahara
Program Chmn.	J. C. Shaffer
Membership Chmn.	J. A. Utmar
Hospitality Chmn.	H. Sollers-Riedel



1982

President	M. S. Collins
President-Elect	M. B. Stoetzel
Rec. Secretary	T. E. Wallenmaier
Corr. Secretary	R. E. Harbach
Treasurer	F. C. Thompson
Editor	D. R. Smith
Custodian	J. F. Carroll
Program Chmn.	J. C. Shaffer
Membership Chmn.	J. A. Utmar
Hospitality Chmn.	H. Sollers-Riedel



1983

President	M. B. Stoetzel
President-Elect	N. O. Morgan
Rec. Secretary	T. E. Wallenmaier
Corr. Secretary	R. G. Robbins
Treasurer	T. J. Henry
Editor	D. R. Smith
Custodian	J. F. Carroll
Program Chmn.	J. R. Aldrich
Membership Chmn.	G. B. White
Hospitality Chmn.	H. Sollers-Reidel



Stoetzel, M B. 1984. "Esw Past presidents For The Years 1884 Through 1983, Photographs And Support Officers." *Proceedings of the Entomological Society of Washington* 86, 11–35.

View This Item Online: <https://www.biodiversitylibrary.org/item/55207>

Permalink: <https://www.biodiversitylibrary.org/partpdf/57582>

Holding Institution

Smithsonian Libraries

Sponsored by

Smithsonian

Copyright & Reuse

Copyright Status: In copyright. Digitized with the permission of the rights holder.

Rights Holder: Entomological Society of Washington

License: <http://creativecommons.org/licenses/by-nc-sa/3.0/>

Rights: <https://biodiversitylibrary.org/permissions>

This document was created from content at the **Biodiversity Heritage Library**, the world's largest open access digital library for biodiversity literature and archives. Visit BHL at <https://www.biodiversitylibrary.org>.