

# Dermaptera collected

by

Mr. EDW. JACOBSON in Simalur,

by

MALCOLM BURR, D.Sc. F.E.S.

---

Mr. VAN EECKE, of the Leyden Museum, has communicated to me some *Dermaptera* taken by that indefatigable collector Mr. EDWARD JACOBSON, in the Island of Simalur in 1913. These work out as follows:

## Section **PROTODERMAPTERA**.

Family LABIDURIDAE.

Subfamily *Psalinae*.

Genus **Titanolabis**, BURR.

1. sp. n.

Sinabang: (No. 500). 1 ♀, with ova, April 1913.

This species differs from the Australian *T. colossea*, DOHRN, in its much smaller size, and longer and narrower thoracic plates. It is not, however, possible to describe it properly without the male.

Genus **Psalis**, SERV.

1. *plebeja*, DOHRN.

Sibigo: 1 ♀ in August. (No. 5054).

Lasikin: 1 ♂, in April. (No. 2374).

A well known, but not very common, Malayan species.



Section **EUDERMAPTERA.**Family **LABIIDAE.**Genus **Nesogaster, VERH.**1. *amoenus*, STÅL.

Laut Tawar: 1 ♂, 3 ♀♀ in August. (Nos. 4553–4556).

Pulu Babi (Islet near to Simalur N.B. 2°7', O.L. 96°40')  
(Nos. 2378–2381, 2383, 2384).

Lasikin: One larva in April. (No. 2376). 1 ♀ in Avril  
(No. 2385).

Sinabang: 1 nymph in July. (No. 4231).

A common Indo-Malayan species.

Genus **Spongovostox, BURR.**1. *semiflavus*, BORM.

Sinabang: 1 ♀ in April. (No. 2383).

A common oriental species.

Genus **Labia, LEACH.**1. *pilicornis*, MOTSCH.

Sinabang: 2 ♀ in July. (Nos. 4230, 4232, 4240, 4241)  
and 2 ♀ in June. (Nos. 4238, 4239).

A well known Indo-Malayan species.

2. *curvicauda*, MOTSCH.

Forest of Simalur: 1 ♀ in July. (No. 4242).

Pulu Pandjang: 1 ♂ in June. (No. 4557).

Genus **Chaetospania, KARSCH.**1. *thoracica*, DOHRN.

Sinabang: 1 ♂ in January. (No. 1960).

A common Indo-Malayan species.

Genus **Prolabia, BURR.**1. *arachidis*, YERS.

Bangkal: ♂ and ♀ in January. (Nos. 4236 & 4237).

A cosmopolitan species.



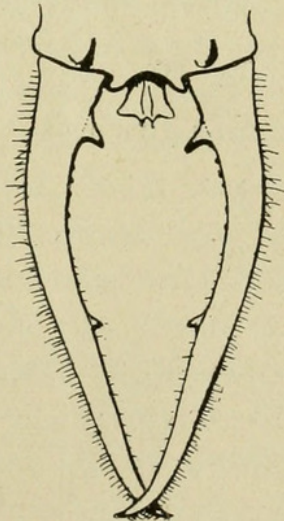
## Family CHELISOCHIDAE.

Genus **Hamaxas**, BURR.*Hamaxas quadrituberculatus* sp. n.

Statura gracili; caput, pronotum elytra, alae nigra; abdomen fusco-rufino, pedes forcepsque rufi: segmentum ultimum dorsale ♂ quadratum, margine postice tuberculis 4 instructo, forcipis brachia ♂ remota, gracilia, elongata, basi depressa ac dente depresso acuto armata.

	♂	♀
Long. corporis	8—9 mm.	7—8.5 mm.
» forcipis	2.74—4.5 mm.	1.5—2 »

Build slender: head, pronotum, elytra and wings black; abdomen blackish red; legs and forceps tawny; the whole body pubescent. Antennae with 16 long, slender, cylindrical segments, black, the apical segments paler; third segment decidedly shorter than the first, fourth a little shorter than the third, fifth about equal to the third and rest gradually lengthening. Head depressed, sutures distinct in the ♂, occiput rather tumid. Pronotum a little longer than broad, convex anteriorly and rounded posteriorly, the sides parallel. Abdomen very finely punctulate; last segment smooth and quadrate, ample; in the male at the posterior margin there are two pairs of tubercles, one pair vertical and situate just before the margin, the other pair on the margin itself, and projecting posteriorly; in the ♀ there is a slight tumid elevation over the roots of the forceps; pygidium ♂ not projecting, vertical, smooth, and unarmed. Branches of the forceps: in the ♂ remote, elongate, arcuate, and slender, depressed at base, and armed there with a depressed, long, acute tooth directed posteriorly; there is a second, smaller tooth, nearly obsolete, before the apex, and the inner margin is crenulate between the two teeth; in the ♀, simple, straight, contiguous and unarmed.





Sinabang: Nos. 4246 (♂), 4247-8-9 (♀♀) and 4250 (♂),  
vii. 1913: 1958 (♀): 1959 (♂), i. 1913. No number, ♀, iii. 1913.

Forest of Simalur: No. 4245 (♂).

Lasikin: No, 2376 (♀) iv. 1913.

Closely resembles the Papuan *H. nigrorufus*, BURR., but differs in the very distinctive armature of the last tergite and forceps of the male. In the type specimen, the parameres are protruding: these are apically acute, with the lateral foliated dilation which seems to be characteristic of this genus.

The Nomotype is No. 4250, and is deposited in my collection, and the cotypes in the Leyden Museum.

Family FORFICULIDAE.

Subfamily Chelidurinae.

Genus *Allodahlia*, VERH.

1. *scabriuscula*, SERV.

Sinabang: 2 ♂ and 1 ♀ in February. (Nos. 1955-6-7).

A common Oriental species.

Subfamily Opisthocosminae.

Genus *Narberia*, BURR.

1. sp.

Sinabang? 1 nymph in March.

---



Burr, Malcolm. 1916. "Dermapera collected by Mr. Edw. Jacobson in Simalur." *Tijdschrift voor entomologie* 58, 115–118.

**View This Item Online:** <https://www.biodiversitylibrary.org/item/55136>

**Permalink:** <https://www.biodiversitylibrary.org/partpdf/56929>

**Holding Institution**

Smithsonian Libraries and Archives

**Sponsored by**

Smithsonian

**Copyright & Reuse**

Copyright Status: NOT\_IN\_COPYRIGHT

This document was created from content at the **Biodiversity Heritage Library**, the world's largest open access digital library for biodiversity literature and archives. Visit BHL at <https://www.biodiversitylibrary.org>.