

- X. *Notes on new or little-known species of Hymenoptera, chiefly from New Zealand.* By W. F. KIRBY, Assistant in the Zoological Department, British Museum.

[Read April 4th, 1883.]

I CONSIDER the publication of isolated descriptions, unaccompanied by figures, useful in the case of conspicuous species, or species from restricted localities which are not likely to be confounded with any others. In the present paper I describe a few new species, conformably to these simple rules, and take the opportunity to publish remarks on one or two species already known. The types are all in the British Museum.

## ACULEATA.

### FOSSORES.

#### POMPILIDÆ.

#### *Priocnemis Huttoni.*

Exp. al. 10 lin. ; long. corp. 6 lin.

Black ; head and thorax more or less clothed with golden yellow tomentum. Wings golden yellow ; fore wings with the tips slightly clouded, and with a brown, slightly irregular, transverse band at about two-thirds of their length. Antennæ entirely black. Abdomen black ; 1st segment marked with red on the sides ; 2nd segment red, with a black spot on each side at the base, and two others on the back, at the hinder extremity. Legs red ; coxæ, trochanters, base of front femora and extreme base of middle femora, black.

New Zealand ; collected by Capt. F. W. Hutton.

Closely allied to *P. fugax*, Fabr. (*maculipennis*, Smith), but apparently distinct.



*Priocnemis xenos.*

Exp. al. 8 lin. ; long. corp. 4 lin.

Black ; face, prothorax, pleuræ, and scutellum clothed with a whitish or pale golden pubescence, brightest on the scutellum. Abdomen slightly attenuated towards the base ; coxæ, trochanters, and more or less of the base of the femora, black ; tips of the latter, and the tibiæ and tarsi, red ; back of the two 1st segments of the abdomen slightly marked with red behind. Wings yellowish, especially towards the base.

New Zealand ; collected by Capt. F. W. Hutton.

Also allied to *P. fugax*, Fabr.

*Priocnemis Pascoei.*

Exp. al. 10 lin. ; long. corp. 6 lin.

Black ; antennæ yellowish grey beneath, a slight greyish pubescence on the face and thorax. Legs, basal half of the abdomen beneath, and hind border of the 1st segment, and the whole of the 2nd segment above, rufo-testaceous ; coxæ and trochanters black, except the tips of the hind trochanters ; extreme tip of hind femora black above. Wings hyaline, with yellowish brown nervures and yellow stigma.

New Zealand ; communicated by F. P. Pascoe, Esq.

## LARRIDÆ.

*Larrada Cowani.*

Exp. al. 14 lin. ; long. corp. 9 lin.

Black ; antennæ dark red, shading into black beyond the middle ; mandibles, front edge of mesothorax, and of the 1st segment of the abdomen, tegulæ, and legs, dark red ; coxæ above and at the base beneath, and femora above, mostly black ; face, cheeks, and scutellum, and a large spot below the hind wings, clothed with pale golden pubescence. Wings strongly clouded with yellow, and with reddish nervures ; tips dusky.

Madagascar ; collected by Rev. W. Deans Cowan.

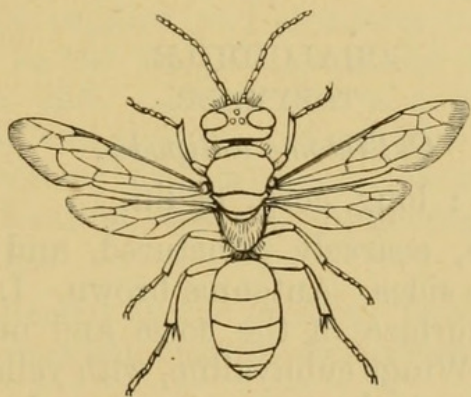
Allied to *L. aurulenta*, Fabr., but rather shorter and stouter, and differing slightly in coloration. The two specimens described are not quite fresh.



## CRABRONIDÆ.

## TARANGA, n. g.

Apparently allied to *Pemphredon*, but more of the shape of *Priocnemis*. Head about as broad as the thorax; antennæ inserted in the middle of the face; eyes very large, reniform, and rather deeply notched just above the antennæ. Abdomen subsessile. Legs moderately stout; all the tibiæ with a pair of strong apical spurs; cubital cell rather long and narrow, not appendiculated, two complete subcubital cells, the 1st three times as long as broad, and slightly narrowed at the base, the 2nd half as long as the 1st below, but much narrower above, the 2nd transverse-cubital nervure running inwards at an acute angle, and curving slightly inwards towards its extremity; 1st recurrent nervure very oblique, curving slightly upwards towards its extremity, and received by the 1st subcubital cell at fully four-fifths of its length; the 2nd recurrent nervure forming a half-circle outwards, and received by the 2nd subcubital cell close to its base.

*Taranga dubia.*

Exp. al. 8 lin. ; long. corp. 5 lin.

Black; head and thorax clothed with grey hair, shading into silvery on the face and cheeks, femora and tibiæ with silvery grey pubescence, and segments of the abdomen narrowly edged with the same behind. Wings hyaline, dusky towards the tips, with piceous nervures.

New Zealand; communicated by F. P. Pascoe, Esq.



## PUPIVORA.

## ICHNEUMONIDÆ.

## PIMPLIDES.

*Rhyssa semipunctata.*

Exp. al. 12—18 lin.; long. corp.  $6\frac{1}{2}$ —10 lin.; oviductus 4— $7\frac{1}{2}$  lin.

Red; antennæ shading into blackish beyond the middle; often entirely blackish above, except for a space of about four joints considerably before the middle; 1st four segments of the abdomen (except the base of the 1st) black; a large yellow spot on each side of the 1st segment in front, and another behind; a yellow spot on each side at the back of each of the three other black segments; ovipositor black; fore wings smoky hyaline, with black nervures, and deeply tinged with purple towards the base; hind wings clear hyaline, with black nervures; hind tarsi, except the last joint, darker than the femora and tibiæ.

Australia; New Zealand.

## CHALCIDIDÆ.

## TORYMINÆ.

*Callimome antipoda.*

Exp. al. 2 lin.; long. corp.  $1\frac{1}{4}$  lin.

Greenish blue, coarsely punctured, and with golden reflections on the sides. Antennæ brown. Legs brownish yellow; upper surface of the coxæ and outside of the femora green. Wings subhyaline, with yellow nervures; cubitus brown, hook-shaped; ovipositor about as long as the abdomen.

Lindis, New Zealand. Collected by Capt. F. H. Hutton.

## TEREBRANTIA.

## SIRICIDÆ.

## XIPHIDRIINÆ,

*Derecyrta flavipes*, Phil.

The female is considerably larger than the male (exp. al. ♂ 8 lin.; ♀ 13 lin.), and the legs are entirely fulvous, except the coxæ and trochanters. The hind tibiæ in both sexes are armed with one or perhaps two very slender



middle spurs, a character which allies this species to *Megalodontes*, but which I do not notice in any other *Derecyrtæ* or *Brachyxiplus*.

## TENTHREDINIDÆ.

## SELANDRIINÆ.

## CACOSYNDYA.

*Pompholyx*, Freym., Protocole d'Antr. Mosc., viii., p. 217 (1870), nec Lea, 1852 (Mollusca). Type, *Pompholyx dimorpha*, Freym.

This genus is remarkable among the *Tenthredinidæ* for its having an apterous female, and I have therefore given it a name alluding to the disparity of the sexes.

## EMPHYTINÆ.

*Aneugmenus Thwaitesii*.

Exp. al. 4 lin.; long. corp. 2 lin.

Black; antennæ 10-jointed, the joints well separated, the 2nd, 4th, and 7th of equal size, the 8th, 9th, and 10th gradually smaller and slenderer, the 3rd and 5th twice as long as the 2nd, &c., and the 4th half as long again as the 2nd. Head and abdomen punctured; thorax smooth and shining. Legs blackish brown, set with short bristles; tarsi whitish yellow; claws brown. Wings dusky hyaline, with piceous nervures, and covered with short hairs.

Ceylon; collected by the late Dr. Thwaites. The description is somewhat incomplete, owing to the specimen being carded.



Kirby, W. F. 1883. "X. Notes on new or little-known species of Hymenoptera, chiefly from New Zealand." *Transactions of the Entomological Society of London* 31, 199–203. <https://doi.org/10.1111/j.1365-2311.1883.tb02946.x>.

**View This Item Online:** <https://www.biodiversitylibrary.org/item/55130>

**DOI:** <https://doi.org/10.1111/j.1365-2311.1883.tb02946.x>

**Permalink:** <https://www.biodiversitylibrary.org/partpdf/56873>

**Holding Institution**

Smithsonian Libraries and Archives

**Sponsored by**

Smithsonian

**Copyright & Reuse**

Copyright Status: Public domain. The BHL considers that this work is no longer under copyright protection.

This document was created from content at the **Biodiversity Heritage Library**, the world's largest open access digital library for biodiversity literature and archives. Visit BHL at <https://www.biodiversitylibrary.org>.