

1909. Idem.—Genera Insectorum (dirigés par P. Wytsman), Bruxelles, 97 me fascicule, Family Chalcididæ. pp. 427, 464, 465, 468.

Table to the genus as in Ashmead (1904); brief diagnosis of the genus, listing *colliguayæ*, *melleus*, *persimilis* and *viridicyaneus*, *Euderus columbianus* (p. 427).

(See also Kieffer, bionomic note on *colliguayæ*, Révista Chilena de Historia Natural. Órgano del Museo de Valpaíso, VII, p. 111.)

NEW AFRICAN TIPULIDÆ.

BY C. P. ALEXANDER, ITHACA, N. Y.

The following species were given by Mr. Chas. W. Howard to Prof. Needham, and later turned over to me for examination. There were four specimens, representing three species, of which two are herein characterized as new. Mr. Howard's remark, that "the species were as thick as gnats," is interesting.

Styringomyia howardi, n. sp.

Holotype.—♂, brown and gray; length, 5.25 mm.; width, 4.75 mm.

Mouthparts dark brownish black; palpi, first segment very short; second segment large, oval, brown, apical third black; third more slender, brown, apical two-thirds black; terminal segment about as thick as the penultimate. Antennæ: first segment elongated, gray; second oval, enlarged at the distal end, remaining segments oval, gradually becoming more elongated to the tip; segments with a short pubescence and long irregular hairs, which are scarcely verticillate; first segment gray, second dark brown at tip, yellowish at base; remaining segments pale brownish yellow, the hairs darker; ommatidia large, coarse, black; front, vertex, genæ and occiput gray, with stout, scattered black bristles.

Pronotum large and prominent, showing an unusually generalized condition; the scutellum U-shaped, encircling the cephalic margin of the mesothoracic præscutum, with about three prominent bristles on the lateral margin; the scutum is narrower, running to an obtuse point cephalad, with a group of bristles along the lateral margin. Mesonotum: præscutum with a row of bristles along each side of the median line and a row along the lateral margin, this row incurving near the cephalic margin of the sclerite; scutum with four bristles on each half; the scutellum with a bristle on either side of the median line; postscutum and metanotum unarmed. Pronotum brown, pale apically, with an inverted U-shaped pale mark on the scutum; mesonotum præscutum, middle line pale, remainder

brown; scutum grayish brown, yellow along the cephalic margin passing around the black bristle; scutellum yellow medially, brown laterad of the bristle, postscutum brown; metanotum brown; sterna yellow; epimera and episterna reddish brown, forming a narrow longitudinal band.

Halteres pale brown, subapically darker brown; tip yellow. Legs short and stout, thickly covered with appressed hairs; coxæ short, cylindrical, in the fore leg about as long as the trochanter; in the middle leg shorter than the prominent trochanter; in the hind leg prominent, much exceeding the shorter and narrower trochanter. Femora rather short, slender proximally, soon thickening so as to become almost clavate distally; the fore femora have stout, long hairs, which are scattered irregularly amongst the appressed hairs, becoming very numerous near the apical portion of the lower surface of the segment. Tibiæ slender throughout, tibiæ and metatarsi with a few prominent hairs regularly disposed; the other tarsal segments with a single hair at the tip. The fore femora are as long as the succeeding segments combined; the hind legs are longer than the others. Fore legs lacking (in the holotype); middle leg, coxæ and trochanter light yellow; femora yellow, with a medial and subapical brown band; tibiæ yellow, with a dark band before the middle and at the tip; tarsi yellow-tipped with dark brown; fifth segment and claws dark brown. Hind legs, coxæ, trochanters and femora as in the fore leg; tibiæ and tarsi yellow, excepting the last tarsal segment, which is darker.

Abdomen with numerous scattered hairs, yellow; the apical margins of the segments brown.

Wings with a faint yellow tinge; costal border and radial veins yellow; remaining veins darker; a dark suffusion around cross-vein $r-m$, at the union of M_3 with M_{1+2} and along the basal deflection of Cu_1 . Venation (see fig. 2): S_c short, approximated with R basally; its tip opposite the origin of R_s ; R short, the tip of R_1 before the middle of the

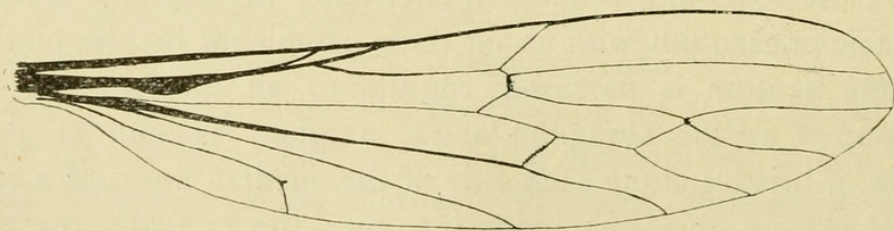


FIG. 2.—*Styringomyia howardi*, holotype.

wing, the sector originating a short distance back from the tip; R_s straight, rather long; R_{2+3} very short, oblique; deflection of R_{4+5} very short, scarcely equal to the $r-m$ cross-vein; R_{4+5} long. M forks anterior to the

fork of R_s ; deflection of M_{1+2} rather long; M_3 in a line with M , strongly deflected cephalad toward M_{1+2} , nearly, if not quite, obliterating the cross-vein m . Basal deflection of Cu_1 under the middle of cell 1st M_2 . First anal fused with Cu at extreme base; 2nd anal strongly curved at tip with a spur at the curve, which may be a remnant of a forked anal.

Paratype.—♂. This specimen is much darker than the type; the first six antennal segments are dark, remainder yellowish; thoracic dorsum dark brown, where it is light brown in the type; yellow of abdomen replaced by dark brownish gray, etc. This is but an extreme in colour.

This species is remarkably similar to the species mentioned by Osten Sacken (Mon. Dipt. N. Am., IV, p. 102, 103). The main differences are in the venation, the elongated cell 1st M_2 and incurved second anal with a spur at the curve being peculiar to *S. howardi*.

Holotype.—♂, Queliniani, Zambesi R., Dec. 20, '08; coll. Mr. C. W. Howard.

Paratype.—♂, with the type.

The only species described from Africa is *S. cornigera* Speiser (Dipt. aus Deutschland Afrikanischen Kolonien, p. 130-132, fig. 1*). This insect differs so remarkably from the remaining species of the genus, which otherwise form a homogenous compact group, that I propose to set it off in a new subgenus.

Neostyringomyia, subgen. n.

Char.—Radius long, its tip beyond the middle of the wing; R_s remarkably shortened, no longer than the $r-m$ cross-vein; R_{2+3} sinuate, leaving cell R_1 very different in shape from that which obtains in the subgenus *Styringomyia*; cross-vein m long and prominent; basal fusion of Cu and 1st A very long; prothorax narrow, scarcely one-fourth as wide as the head; above the antennæ a short, bent spatulate horn.

Type.—*S. cornigera*, Speis.

Cornigera is obviously of more recent derivation than the members of the subgenus *Styringomyia*, and its venation is almost normal; the retreat of R_{2+3} toward the base of the wing may give a hint to the manner in which the remarkable venation of *Toxorhina* came about, perhaps by the fusion of R_{2+3} with some other vein, such as R_1 .

A species was described from the Pacific Islands by Grimshaw in 1901, as *S. didyma* (Fauna hawaiiensis, Vol. 3, pt. 1 (Dipt.), pl. 1, figs. 14-16), from Honolulu, Oahu De Meijere, in his recent paper, "Studien

*Berl. Ent. Zeitschr., 52 (1907).

uber Süd-ostasiat. Dipteren, V,"† records the species from much farther west (Batavia, Java, etc.). *Styringomyia didyma* belongs to the typical subgenus, and is extremely similar to the fossil species described by Löew** and Osten Sacken, as well as to the species under consideration. All of the species of the subgenus *Styringomyia*, as here limited, are very similar to one another in venation, and the coloration is inclined to be variable. *S. didyma* differs from the new species as follows: The wings are shorter in *didyma*; R_{4+5} is in a direct line with R_8 , whereas there is a deflection at the origin of R_{4+5} in *S. howardi*. *Didyma* has no spur at the curve of 2nd anal. The coloration of the thorax of the two species is different. The male genitalia of the species have not been studied critically, and must furnish the ultimate criterion. It is, of course, possible that when further collections are made, intermediate stations for the genus will be discovered, and then it may be proved that *S. howardi* is merely a variant of *S. didyma*. However, I prefer to describe it as distinct at present.

In the end of Vol. III of the Monograph, p. VII, Osten Sacken came forward with the surprising intelligence that the genus *Styringomyia* still existed. He says: "During my passage through Stockholm in 1872, I made the interesting discovery that the genus, besides its occurrence in amber and copal, is found living in Africa. I saw several specimens among the unnamed Diptera from Caffraria (from Wahlberg's voyage) in the Stockholm Museum. The species was apparently different from that included in the copal, which I possess." Later, in "Studies on Tipulidæ,"* he states, "This singular genus, originally described from specimens included in copal from Zanzibar, and also in amber, has been discovered since as still living in South Africa. In the museum in Stockholm I have seen recent specimens brought from Caffraria by Wahlberg."

Despite Prof. Speiser's statement (l.c., p. 132), that Osten Sacken probably referred to *Elephantomyia wahlbergi* Bergr., when he made the last-quoted statement, I have no doubt but that Osten Sacken saw specimens of a true *Styringomyia* in Stockholm; an error of this calibre was not customary with Osten Sacken.

Mongoma zambesiæ, n. sp.

Holotype.—♀, brown; length, 5.75 mm.; width, 5.5 mm.

Rostrum and palpi dark brown; antennæ, first two segments dark

†Tijdschr. voor Entomol., April, 1911, p. 40.

**Löew, H. Dipterol Beiträge, I, p. 7, with f. (1847).

*Berl. Ent. Zeitschr., Bd. XXXI, 1887; Heft., II, pp. 185, 186.

brown, third light brown, remainder lacking. Front, vertex, genæ and occiput dark brown.

Thorax: Mesothoracic præscutum strongly produced cephalad, entirely covering the pronotum; cervical sclerite elongated, prominent; transverse suture scarcely V-shaped; mesothoracic præscutum, dark brown anteriorly, posteriorly with a pale brown median line, which extends back across the scutum, remainder of thoracic dorsum dark brown. Sterna, episterna and epimera brownish yellow; halteres pale; legs long, dull brown, at the joints somewhat darker; no processes on the fore femora, as described for *M. fragillima* and *M. curtipennis*.

Abdomen uniform brown.

Wings hyaline, costal margin yellow, stigma rather indistinct. Venation (see fig. 3), Sc very long, as in all members of the genus; R long, cross-vein *r* near its tip. R_s gently arcuated, forking far before the tip

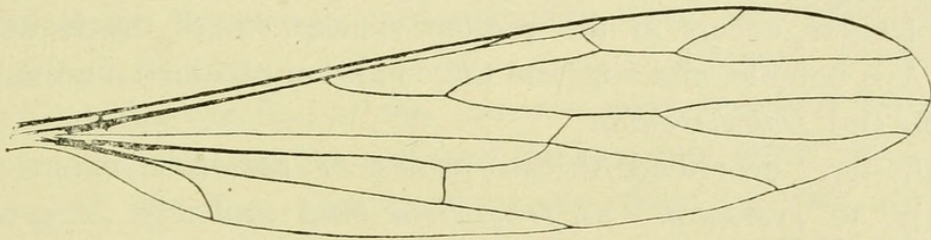


FIG. 3.—*Mangonia zambeziæ*, holotype.

of Sc_1 and in a line with R_{4+5} ; the cross-vein *r* far before the fork of R_{2+3} ; R_2 short, oblique; R_3 long, in a line with R_{2+3} . R_{4+5} fusing with M_{1+2} to form the proximo-anterior border of cell M_2 , thus obliterating the *r-m* cross-vein. M forks at the lower corner of cell M_2 , M_{1+2} departing cephalad, fusing with R_{4+5} for a distance and finally separating, free at the margin; M_3 in a line with M. Cu short, its fork far back, the free position of Cu_1 very long, fusing with M_3 at the fork of M, and continuing to the margin so fused. Cu_2 fuses with 1st A far back from the wing-margin, so that 1st A + Cu_2 is over twice the length of the free portion of Cu_2 alone. 2nd A is very short, suggesting the condition found in *Petaurista*.

Holotype.—♀, Queliniani, Zambesi R., Dec. 20, '08; Mr. C. W. Howard.

The genus *Mongoma*, of which ten species have been described, has a world-wide distribution in the tropics; two species have been described from the West Indies, five species from the East Indies and Australia, and three species from Africa. The genus is distinguished by the excessive length of Sc, the obliteration of the *radio-medial* cross-vein by the long

fusion of R_{4+5} with M_{1+2} , and the decided tendency of Cu_2 to fuse with 1st A.

The West Indian species (*manca* and *pallida* Will., Dipt. St. Vincent, p. 291-293, figs. 6, 7, of *pallida*) and possibly *M. albitarsia* Dol. (E. Ind.), also, which I have not seen, are the most generalized members of the genus, in that Cu_2 and 1st A are distinct to the wing-margin. The intermediate group, containing *trentepohlii* Wièd. (see Wièdemann, Aussereur. Zweifl. Insekt., I, 551; 18, tab. VIb, fig. 12; a better figure in De Meijere, Tijds. voor Ent., 1911, pl. IV, fig. 42), *fragillima* Westw. (see Westwood, Trans. Ent. Soc. Lond., 1881, pl. 17, fig. 1; also Needham, 23rd Rept., N. Y. St. Ent., pl. 21, fig. 6), and *exornata* Bergr. (Bergr., Entomol. Tidskrift, 1888, opp. p. 130, fig. 3), has Cu_2 fused with 1st A for a short distance back from the tip ($Cu_2 + 1st A$ less than one-half Cu_2). A third stage in the specialization of this part occurs in *M. pennijes* O. S. (E. Ind.). (See De Meijere, l.c., pl. IV, fig. 39.) The maximum of specialization, as far as I know, occurs in the present species, where the fusion of Cu_2 with 1st A is notable, and suggests the condition obtained in the families *Empididae* and *Dolichopodidae*.

Of the three described African species, *M. zambesiæ*, comes closest, apparently, to *exornata*. *M. fragillima* (and probably *M. curtipennis* also, according to Speiser, who compares it with *fragillima*), has vein M_3 separating from Cu_1 , and continuing distinct to the wing-margin; both of these species possess a curious spur-like structure at the base of the fore femora, which does not occur in *M. zambesiæ*.

I have a ♂ of *M. exornata* Bergr., taken at Queliniani, Zambesi R., Dec. 20, '08, in which the fore legs are lacking, and I am unable to state whether or not this structure occurs there. *M. exornata* has been recorded from Delagoa Bay, Portuguese East Africa; Caffraria, E. Cape Colony, and Amani, German E. Africa. It is apparently widely distributed throughout Eastern Africa.

ON THE OCCURRENCE OF A EUROPEAN SPECIES OF MYMARIDÆ IN NORTH AMERICA.

BY A. ARSENE GIRAULT, BRISBANE, AUSTRALIA.

Up to the present I have been successful in finding but a single species of the family Mymaridæ, common to Europe and North America. This species is *Anaphes pratensis* Foerster, which I have captured in Illinois, and of whose characteristics I write of in a paper on Chalcidoidea, to be published soon in Germany; the species is recorded from America



Alexander, Charles P. 1912. "New African Tipulidae." *The Canadian entomologist* 44, 83-88.

View This Item Online: <https://www.biodiversitylibrary.org/item/31539>

Permalink: <https://www.biodiversitylibrary.org/partpdf/39600>

Holding Institution

MBLWHOI Library

Sponsored by

MBLWHOI Library

Copyright & Reuse

Copyright Status: NOT_IN_COPYRIGHT

This document was created from content at the **Biodiversity Heritage Library**, the world's largest open access digital library for biodiversity literature and archives. Visit BHL at <https://www.biodiversitylibrary.org>.