

*DENDROBIUM COPLANDII* (Bail.) Rupp.

A—Portion of a plant, natural size.

B—Column, showing the long foot.

C—A flower, with labellum partly pulled out  
between the lateral sepals.

D—Labellum from above.

Enlarged.



## ✕ A PAPUAN ORCHID.

*Dendrobium Coplandii* (Bailey) Rupp, comb. nov. ✕

By H. M. R. RUPP, Northbridge, N.S.W.

(Communicated by C. T. White.)

(With Plate VII.)

(Received 26th October, 1944; accepted for publication, 30th October, 1944; issued separately, 29th June, 1945.)

This little Papuan orchid was discovered by the late Rev. Copland King near Ambasi, and was named in his honour by F. M. Bailey, who described it in *Queensl. Agric. Journ.* xvii (1906), 232, under the name *Bulbophyllum Coplandii*. The structure of the flower suggests that it would be better placed in *Dendrobium*. The length of the petals, the large spur, and the trilobate labellum with raised longitudinal lines or ridges, are all more characteristic of the latter genus than of *Bulbophyllum*. In the National Herbarium of New South Wales there are specimens in good condition sent by the Rev. P. C. Shaw from Ambasi in June 1906, and it is from these that a study of the plant has been made by the present writer. The labellum is very long and narrow, and in dried material its details are difficult to distinguish; but after softening out a flower, the small lateral lobes could be unfolded, and the longitudinal ridges were revealed—one of them apparently continuing along the greater part of the middle lobe. The margins of the lobes are irregularly crenulate-crisped. The foot of the column is very long, corresponding with the length of the large spur, and the labellum is articulate with its apex by a very short claw.

---



# A PAPUAN ORCHID.

*Dendrobium Coplandii* (Bailey) Rupp, comb. nov.

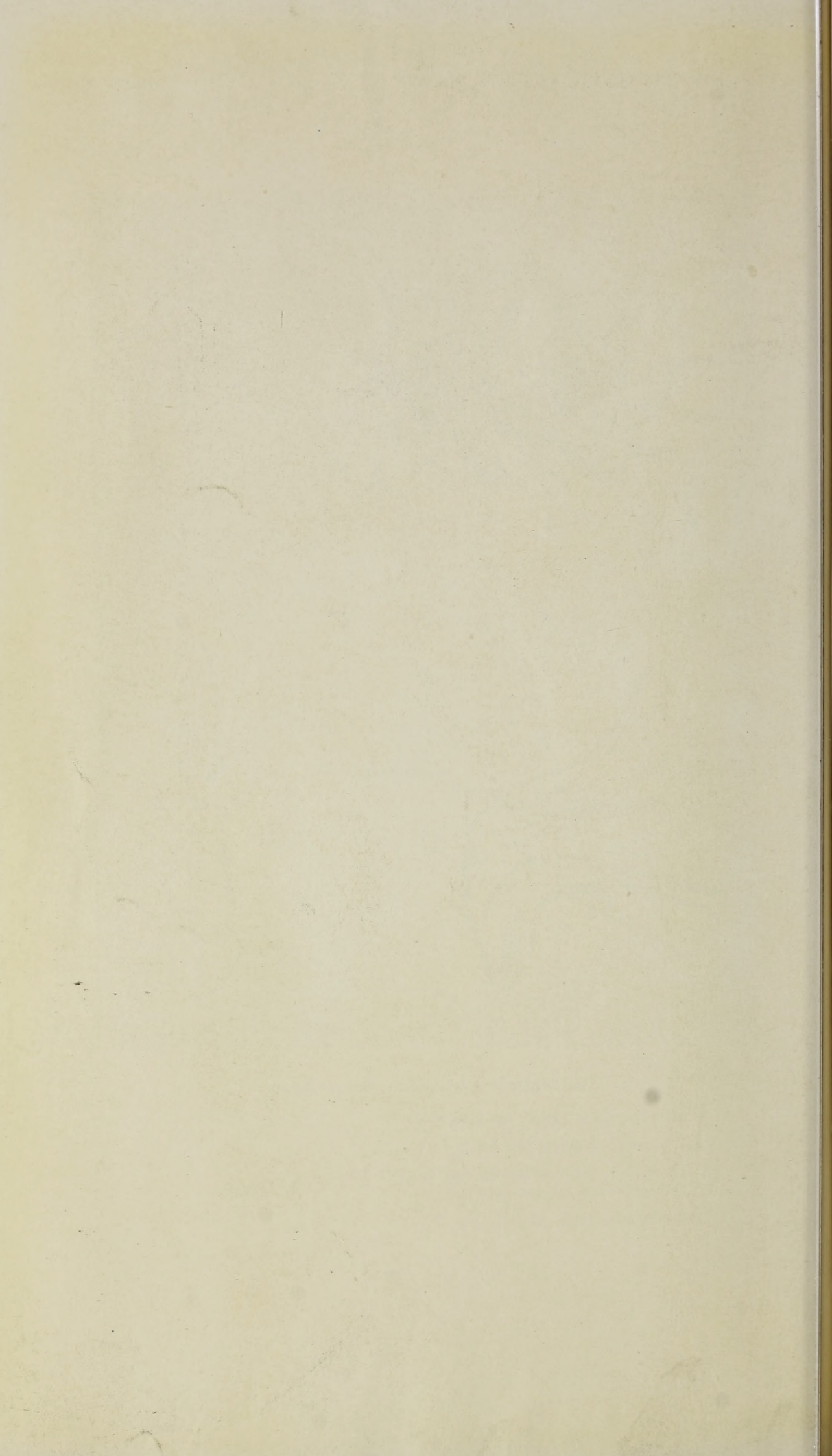
By H. M. R. Rupp, Northridge, N.S.W.

(Communicated by C. T. White.)

(With Plate VII.)

(Received 10th March, 1944; accepted for publication, 10th October, 1944; signed separately, 25th March, 1945.)

This little Papuan orchid was discovered by the late Rev. Copland King near Aitani, and was named in his honour by F. M. Bailey, who described it in *Queensland Agric. Journal*, xlvii (1906), 322, under the name *Dendrobium Coplandii*. The structure of the flower suggests that it would be better placed in *Dendrobium*. The length of the petals, the large size and the reflexed labellum with raised longitudinal lines or ridges are all more characteristic of the latter genus than of *Dendrobium*. In the National Herbarium of New South Wales there are specimens in good condition sent by the Rev. F. C. Shaw from Aitani in June, 1906, and it is from these that a study of the plant has been made by the present writer. The labellum is very long and narrow, and the dried material is difficult to distinguish, but when collected on a flower, the small lateral lobes could be labelled, and the longitudinal ridges were readily seen of them apparently continuing along the greater part of the middle lobe. The margins of the lobes are irregularly crenulate-toothed. The foot of the column is very long, corresponding with the length of the large spur, and the labellum is articulate with its apex by a very short claw.





Rupp, H M R. 1945. "A Papuan Orchid. *Dendrobium Coplandii* (Bailey) Rupp, comb. nov." *The Proceedings of the Royal Society of Queensland* 56, 125–125.  
<https://doi.org/10.5962/p.351706>.

**View This Item Online:** <https://www.biodiversitylibrary.org/item/195751>

**DOI:** <https://doi.org/10.5962/p.351706>

**Permalink:** <https://www.biodiversitylibrary.org/partpdf/351706>

#### **Holding Institution**

U.S. Department of Agriculture, National Agricultural Library

#### **Sponsored by**

U.S. Department of Agriculture, National Agricultural Library

#### **Copyright & Reuse**

Copyright Status: Public domain. The BHL considers that this work is no longer under copyright protection.

Rights: <https://www.biodiversitylibrary.org/permissions/>

This document was created from content at the **Biodiversity Heritage Library**, the world's largest open access digital library for biodiversity literature and archives. Visit BHL at <https://www.biodiversitylibrary.org>.