

1160 W. Orange Grove Ave., Arcadia, California 91006, U.S.A.

HABITAT: *PIERIS OCCIDENTALIS* (PIERIDAE)

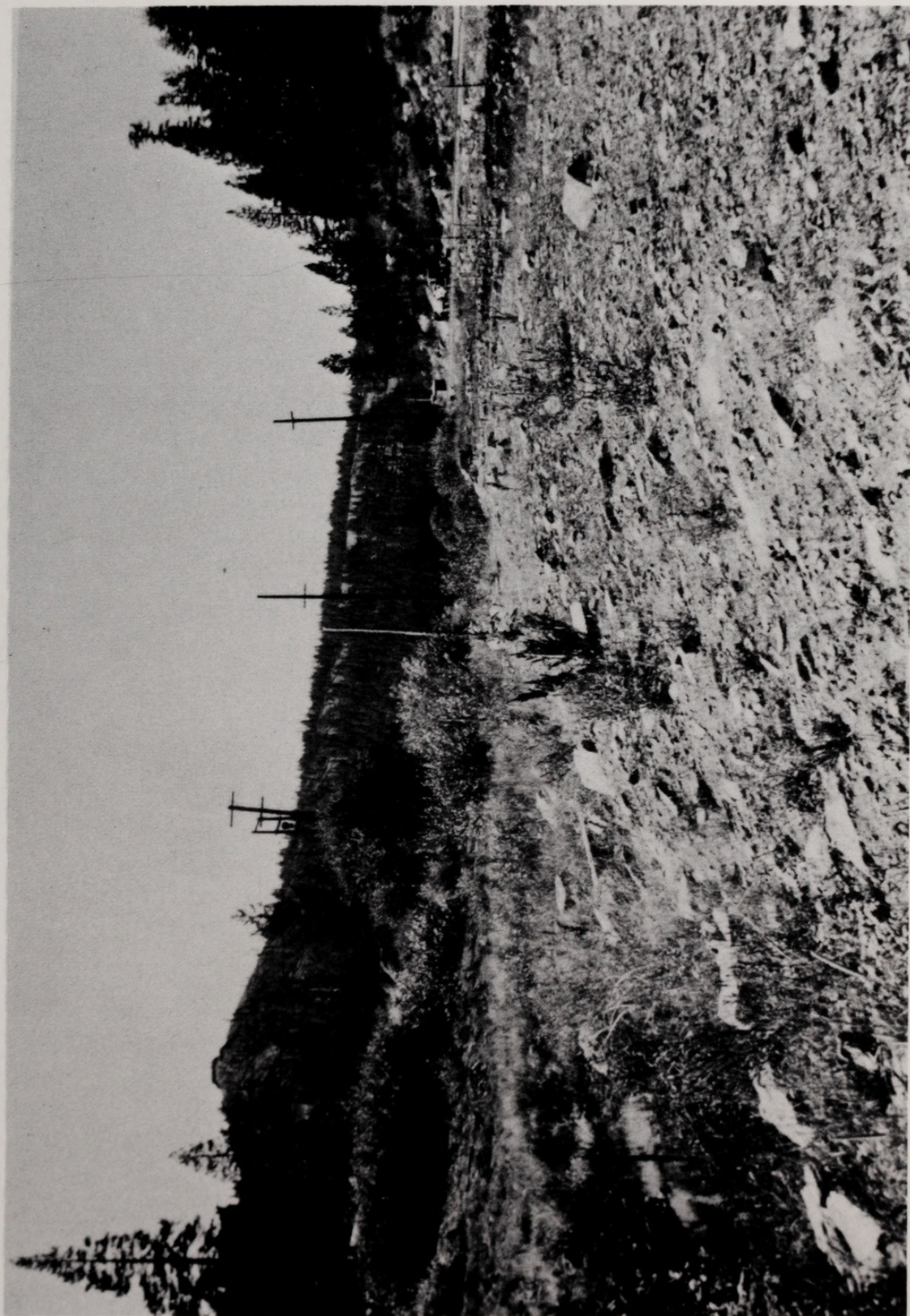
ARTHUR M. SHAPIRO

Department of Zoology, University of California, Davis, Ca. 95616

THE WESTERN WHITE, *Pieris occidentalis* Reakirt, is best known to most collectors as a hilltopping species or as a resident of alpine meadows. In such situations it is seldom observed at high density. Like its lowland sibling *P. protodice* Boisduval and LeConte, *P. occidentalis* is preadapted to disturbed, man-made environments and when suitable conditions arise within its altitudinal range it may exploit them and become very abundant. The photograph is of the railroad yard at Norden, California, in Donner Pass at an elevation of about 7000 feet, 28 September 1973. Here the weedy Crucifer *Lepidium virginicum* var. *pubescens* is very abundant and *P. occidentalis* bred at high density in 1973, mating without hilltopping under conditions in which freshly emerged females were readily available (Shapiro, 1975). *P. protodice*, which apparently does not overwinter at Donner Pass, also successfully colonized this railroad yard, coexisting with *P. occidentalis* in 1973. Males of both species patrolled the bare-soil area constantly in sunshine. *P. rapae* Linnaeus bred along the stream bed at the foot of the slope, using the native Crucifer *Rorippa curvisiliqua*.

LITERATURE CITED

- SHAPIRO, A. M. 1975. Ecological and behavioral aspects of coexistence in six Crucifer-feeding Pierid butterflies in the central Sierra Nevada. *American Midland Naturalist*, in press.





Shapiro, Arthur M. 1976. "Habitat: *Pieris occidentalis* (Pieridae)." *The Journal of Research on the Lepidoptera* 15(3), 182–183. <https://doi.org/10.5962/p.333728>.

View This Item Online: <https://www.biodiversitylibrary.org/item/238345>

DOI: <https://doi.org/10.5962/p.333728>

Permalink: <https://www.biodiversitylibrary.org/partpdf/333728>

Holding Institution

Harvard University, Museum of Comparative Zoology, Ernst Mayr Library

Sponsored by

Harvard University, Museum of Comparative Zoology, Ernst Mayr Library

Copyright & Reuse

Copyright Status: In copyright. Digitized with the permission of the rights holder.

Rights Holder: The Lepidoptera Research Foundation, Inc.

License: <http://creativecommons.org/licenses/by-nc-sa/4.0/>

Rights: <http://biodiversitylibrary.org/permissions>

This document was created from content at the **Biodiversity Heritage Library**, the world's largest open access digital library for biodiversity literature and archives. Visit BHL at <https://www.biodiversitylibrary.org>.