

LIBELLULA VIRGO.



CHARACTER GENERICUS.

Os maxillosum ; maxillis pluribus.

Antennæ thorace breviores.

Alæ extensæ.

Cauda (maris) hamoso-forcipata.

CHARACTER SPECIFICUS, &c.

LIBELLULA viridi-cærulea, alis hyalinis fascia
lata nigra.

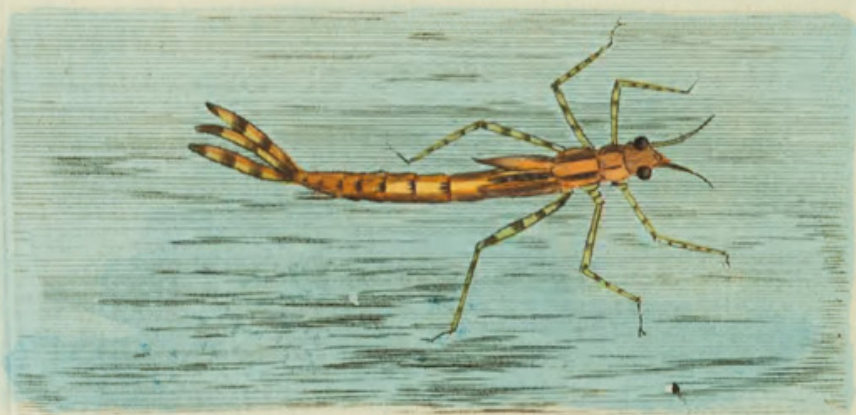
LIBELLULA VIRGO. L. alis erectis coloratis.

Lin. Syst. Nat. p. 904.

Roes. 2. t. 9.

Libellula Virgo, qua species nulla Anglicana vulgarior, matutino tempore, per æstatem prætervolat, ut plurimum, rivulos et loca aquosa. Corporis color generalis est cæruleo-viridis saturatior; alis magnam in medio habentibus maculam seu aream ovatam nigro-cærulescentem. Variant tamen hujus speciei colores magis quam aliarum; interdum enim alæ maculis omnino carent, interdum penitus nigrae sunt; corpore quoque vel viridi-aureo, vel lucido-cæruleo, vel etiam fusco.

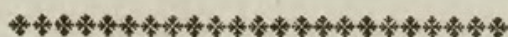




R.A.

London, Published April 1860, by F.R. Volder, Newman Street.

BLACK-WINGED LIBELLULA.



GENERIC CHARACTER.

Mouth consisting of several mandibles.

Antennæ very slender, filiform, shorter than thorax.

Wings spreading.

Abdomen lengthened.

SPECIFIC CHARACTER, &c.

Blue-Green LIBELLULA, with a broad black band across the wings.

Black-winged Dragon-Fly.

Banded LIBELLULA.

The Libellula Virgo, one of the most common species in this country, is generally seen flying, during the morning hours, about the banks of rivulets, or stagnant waters. The general colour of the body is deep blue-green, while the wings are marked in the middle by a very large patch or area of blueish-black. The insect varies however in point of colour more than any other species, and is sometimes seen with the wings perfectly plain or unmarked, and sometimes, on the contrary, entirely blue-black: the tinge of the body also varies in a similar manner, being either bright golden-green, deep lucid blue, or even sometimes brown.



Shaw, George. 1800. "Black-Winged Libellula, *Libellula virgo* [Pl. 476]." *The Naturalist's Miscellany* 12(CXXXIII), <https://doi.org/10.5962/p.310922>.

View This Item Online: <https://www.biodiversitylibrary.org/item/278722>

DOI: <https://doi.org/10.5962/p.310922>

Permalink: <https://www.biodiversitylibrary.org/partpdf/310922>

Holding Institution

Museums Victoria

Sponsored by

Atlas of Living Australia

Copyright & Reuse

Copyright Status: Public domain. The BHL considers that this work is no longer under copyright protection.

This document was created from content at the **Biodiversity Heritage Library**, the world's largest open access digital library for biodiversity literature and archives. Visit BHL at <https://www.biodiversitylibrary.org>.