

PENNATULA CYNOMORION.



CHARACTER GENERICUS.

Corpus in aliis pinnatum, in aliis integrum.

Stipes nudus, officulo interno.

CHARACTER SPECIFICUS, &c.

PENNATULA simplex, rachi cylindrica crassa
granulosa undique polypifera.

Pall. el. zooph. p. 373. n. 221.

Misc. zool. t. 13. f. 1. 4.

ALCYONIUM EPIPETRUM.

Lin. Syst. Nat. Gmel. p. 3811.

PENNATULA CYNOMORION.

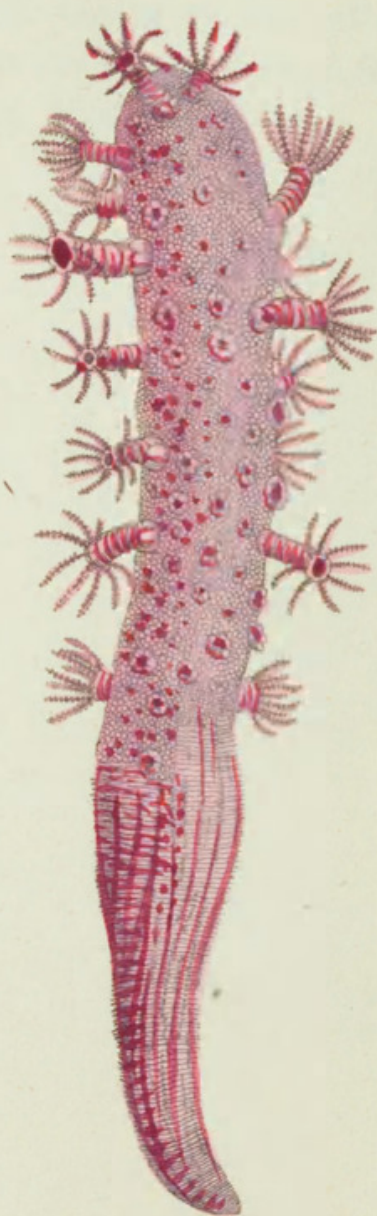
Sol. et Ellis. zooph. p. 65. n. 7.

Pennatulas, ut plurimum, distinguit corpus superius pennæ fimillimum, e scapo complanato in ramulos plurimos laterales divisum gradatim longiores usque ad medium, et dein gradatim breviores donec ad apicem ventum fit. Sunt tamen aliquæ species quibus aliena est facies a cæteris congeneribus. Harum anomalarum insignior nulla est quam quæ in tabula depingitur, cui corpus cylindraceum

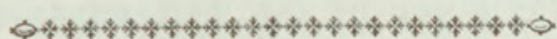
N

elonga-

elongatum, supra crassius paulo quam infra, granosum, et tuberculis valvatis creberrime obductum, e quibus tentacula hydras referencia ad arbitrium extruduntur. Color huic est, ut plurimum, carneus, interdum lacte phoeniceus seu coccineus. Mollis est substantiæ: osse tamen interno instruitur, unumque habet latus leviter canaliculatum seu excavatum. Generat eam mare Mediterraneum.



FINGER-SHAPED PENNATULA.



GENERIC CHARACTER.

Body in some species pinnated, in some entire; with polypes proceeding from its upper surface, and having a naked stem, furnished with an internal bone.

SPECIFIC CHARACTER, &c.

CYLINDRIC PENNATULA with the whole upper part polypiferous.

FINGER-SHAPED SEA-PEN.

Phil. Transf. vol. 53.

THE FINGER SEA-PEN.

Soland. and Ellis's Zoophytes. p. 65.

The Pennatulæ in general are distinguished by the peculiar feather-like formation of the upper part of the body, which from a flattish midrib sends forth numerous lateral branches gradually lengthening from the part whence they originate, till they arrive at the middle or broadest part, and from thence again shortening towards the tip. There are however a few species which recede in point of habit

bit or general appearance from the rest of their congeners. Of these anomalous Pennatulæ the species here figured is one of the most remarkable. It consists of a lengthened cylindrical body, somewhat thicker on the upper part than the lower, of a granulated appearance, and thickly covered with valvular tubercles, thro' the orifices of which are protruded at pleasure the polype-like tentacula of the animal. The colour of this curious species is commonly a pale pink, and sometimes a bright purple, or crimson. It is of a soft substance, but is furnished with an internal bone, and is slightly hollowed or channelled on one side. It is found in the Mediterranean sea.



Shaw, George. 1794. "Finger-Shaped Pennatula, Pennatula cynomorion [Pl. 170]." *The Naturalist's Miscellany* 5(LVI), <https://doi.org/10.5962/p.310749>.

View This Item Online: <https://www.biodiversitylibrary.org/item/276340>

DOI: <https://doi.org/10.5962/p.310749>

Permalink: <https://www.biodiversitylibrary.org/partpdf/310749>

Holding Institution

Museums Victoria

Sponsored by

Atlas of Living Australia

Copyright & Reuse

Copyright Status: Public domain. The BHL considers that this work is no longer under copyright protection.

This document was created from content at the **Biodiversity Heritage Library**, the world's largest open access digital library for biodiversity literature and archives. Visit BHL at <https://www.biodiversitylibrary.org>.