

OPHRYS APIFERA.



CHARACTER GENERICUS.

Nectarium subtus subcarinatum.

Lin. Syst. Nat. tom. 2. p. 592.

Gynandria Diandria.

CHARACTER SPECIFICUS, &c.

OPHRYS bulbis subrotundis, scapo folioso, nectarii labio subquinelobo.

Lin. Spec. Plantar. p. 1343.

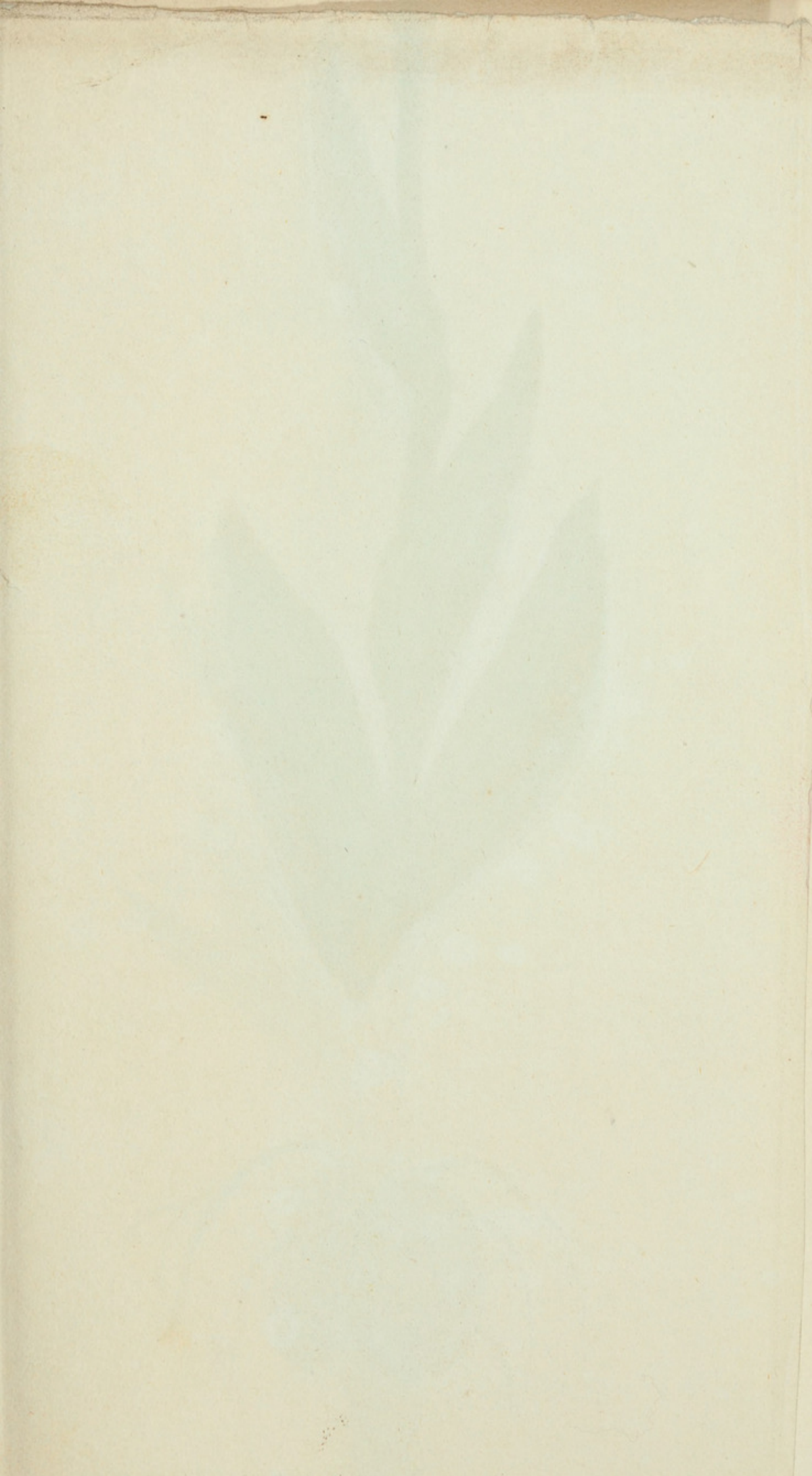
OPHRYS radicibus subrotundis, labello holosericeo, emarginato et appendiculato.

Haller. Hist. vol. 2. 1266. t. 24.

Planta hæc, cui nomen *Ophrys Apifera*, rei botanicæ studiosis probe cognita est: Junio et Julio floret. Super colles, et prope sylvas, solo præcipue cretaceo nascitur; venustatem tamen habet eximiam et peculiarem in umbroso sylvarum secessa reperta. Sic sita injuriam omnem quæ a sole nimium torrido foliis accidere solet, evitat. Flores formosæ hujus plantæ adeo sunt apibus similes, parvo intervallo conspecti, ut qui eam intuentur, in eadem sententia non possint non omnes convenire.

Notum epigramma, parce detortum, *Ophri Apiferæ* non male convenit.

*Dum dubitat vel apem Natura an fingeret herbam,
Conjuxit formas ingeniosa duas.*

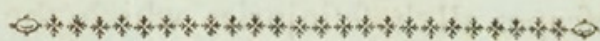




London: Published March 1st 1790 by F. & S. Neelders of A. 23. Buxton Street.



THE
BEE ORCHYS.



GENERIC CHARACTER.

The *Nectary* of a somewhat keel-shaped appearance on its lower surface.

Lin. Syst. Nat.

SPECIFIC CHARACTER, &c.

OPHRYS with roundish bulbs, leafy stem, lip of the nectary notched into five lobes.

Lin.

OPHRYS with 5-petaled flowers, of which the 3 exterior petals are large, acuminate, and of a very pale purple; the 2 interior ones small, very narrow, and greenish; the nectarium large, convex, brown, of a velvety surface, and marked with yellow spots and streaks.

ORCHIS, f. *Testiculus vulpinus* 2 sphegodes.

Gerard emac. p. 212.

ORCHIS sphegodes, seu fucum referens.

Park. 1350.

The plant figured is well known to the admirers of botany by the title of the Bee-Orchis. It flowers in June and July. It is found principally on hilly grounds, and

and near woods, especially on a chalky soil; but it is never seen in such complete perfection as when it happens to grow in the shade of a wood, as in this situation it escapes all those injuries which the leaves are so apt to suffer, when growing in a too sunny exposure.

So striking is the general resemblance which the flowers, when viewed at a little distance, bear to an Insect, as to have uniformly impressed all observers with the same idea; and may almost justify the application of the epigrammatic description.

Nature in doubt a beauteous Flow'r
Or Insect to disclose,
At length beneath her forming pow'r
They both in union rose.



Shaw, George. 1790. "The Bee Ophrys, *Ophrys apifera* [Pl. 23]." *The Naturalist's Miscellany* 1(IX), <https://doi.org/10.5962/p.310676>.

View This Item Online: <https://www.biodiversitylibrary.org/item/281460>

DOI: <https://doi.org/10.5962/p.310676>

Permalink: <https://www.biodiversitylibrary.org/partpdf/310676>

Holding Institution

Museums Victoria

Sponsored by

Atlas of Living Australia

Copyright & Reuse

Copyright Status: Public domain. The BHL considers that this work is no longer under copyright protection.

This document was created from content at the **Biodiversity Heritage Library**, the world's largest open access digital library for biodiversity literature and archives. Visit BHL at <https://www.biodiversitylibrary.org>.