

peculiarly shaped, finely wrinkled frontal callosities, the related Neotropical species *tanycerus* O. S., *megaceras* Bell., and *melanoptera* Hine have been included with *ceras* Towns. in a new genus *Assipala* (Philip, 1941, named for the "ace-of-spades-like" frontal callosity of the genotype species, *tanycerus*; it is a coincidence that the callosity in *ceras* should roughly resemble the ace of diamonds). Hine's (1917) key to the four species is in error on the antennal characters, and the characters of the last couplet separating *ceras* and *megaceras* are reversed although followed by Kröber (1926, p. 220).

Ceras is another of the peculiar Neotropical tabanid elements that has crossed the southern boundaries of the United States, and was overlooked in Brennan's review of the Pangoniinae of this region.

REFERENCES.

HINE, J. S. 1917. Costa Rican Diptera collected by Philip P. Calvert, Ph.D., 1909-1910. Paper 2.—Tabanidae and Asilidae. Trans. Amer. Ent. Soc., 43: 291-299.

1925. Tabanidae of Mexico, Central America and the West Indies. Univ. Mich., Occas. Pap. Mus. Zool., No. 162, 35pp.

KRÖBER, O. 1925. Die Chrysops-Arten Sud. und Mittelamerikas nebst den Arten der Inselwelt und Mexikos. Kono-wia, 4 (3/4): 210-256.

PHILIP, C. B. 1941. Un nuevo genero de moscas, *Assipala* (Diptera, Tabanidae). Revista de Ent. (in press, Dec. no.).

Some Grass Aphid Host Records (Homoptera).¹

By G. F. KNOWLTON and W. DON FRONK,
Utah Agricultural Experiment Station, Logan.

The following report includes a number of host records for grass aphids, not included in the Patch, Food-plant catalogue of the aphids of the world (Maine Agr. Exp. Sta. Bul. 393, 1938, 430 p.). One apparently undescribed *Amphorophora* is here described as new. All collections were made in Utah.

APHIS MAIDIS Fitch. In the experimental greenhouse at Logan, Utah, March 22, 1939, infesting *Poa nevadensis* (K.-M.

¹ Authorized for publication by the director, January 9, 1942. Report on project 51-A Hatch.

W. Allen) ; on *Dactylis glomerata* at Logan, Sept. 5, 1936.

A. MEDICAGINIS Koch. On grass at Morgan, May 21, 1938 ; alates on corn at Providence, July 23, 1935 (C. F. Smith) ; alate on wheat at Springville, June 15, 1938 (K.-L. L. Hansen).

A. MIDDLETONI Thos. On roots of a "yellow grass" at Garland, July 14, 1939.

A. SETARIAE (Thos.). On wheat at Ephraim, Aug. 5, 1938 (K.-L. L. Hansen).

RHOPALOSIPHUM NYMPHEAE (L.). On foxtail grass, American Fork, July 19, 1936.

R. PRUNIFOLIAE (Fitch). Collected in greenhouse at Logan, February and March of 1937, on *Agropyron pauciflorum*, *Bouteloua gracilis* and *B. marginatus*, *Bromus marginatus* and *B. inermis*, *Elymus virginicus* and *E. triticoides*, *Festuca elatior* (K.-M. W. Allen) ; on tall bunchgrass at Tremonton.

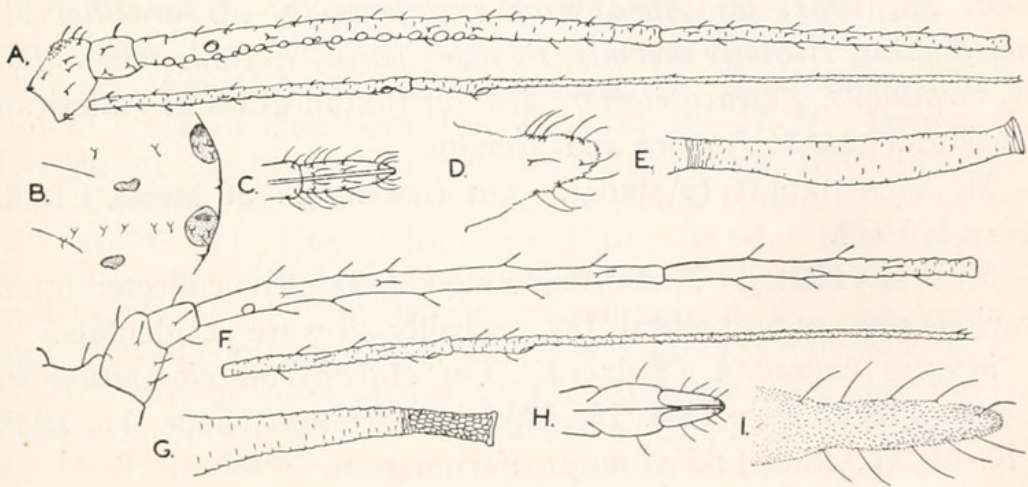


Fig. 1. *Amphorophora alleni* n. sp. Alate, A.-E. *Macrosiphum granarium* (Kirby). Apterous, F.-I.

Amphorophora alleni n. sp.

Alate vivipara: body 3.1 mm. long ; antennae 3.53 mm. long, dusky ; antennal III, 0.96 with 15 to 18 sensoria ; IV, 0.64 to 0.72 ; V, 0.576 ; VI, $0.16 + 0.96$; rostrum reaches hind coxae ; rostral IV + V, 0.192 mm. long, slenderly obtuse at tip, armed with conspicuous hairs ; hind tibiae 2.43 ; hind tarsi 0.144 ; abdomen with 6 conspicuous blackish lateral spots on each side, each containing several blunt to capitate, short hairs (fig. B.)

which form part of the row extending across the abdominal segment; also 3 or 4 pairs of smaller dorso-lateral dark patches; cornicles dusky, 0.68, lightly imbricated; cauda dusky, 0.29 mm. long with 4 to 6 lateral hairs on each side.

Collection: Taken on grass at Lincoln, Tooele County, UTAH, June 2, 1938 (G. F. Knowlton and L. L. Hansen). *Type* in the writer's collection.

Taxonomy: This does not readily key out in Mason's key (U. S. Nat. Mus. Proc. 69 [Art. 20]: 5-6, 1925). It runs to *A. ribiella* (Davis) in Gillette and Palmer's key (Ent. Soc. Amer. Ann. 27: 134, 1934) from which it differs in possessing: Fewer antennal sensoria; also longer hind tibiae, rostral IV + V, cornicles, and antennals III, IV and V.

MACROSIPHUM DIRHODUM (Walk.). On *Bromus tectorum* at Moab, June, 1935.

M. GRANARIUM (Kirby). In greenhouse at Logan, Utah, Feb. 26, 1937, on *Agropyron curlependula*, *A. gracilis*, *A. marginatus*, *Bromus inermis*, *B. marginatus*, *Elymus triticoides*, *E. virginicus*, *Festuca elatior*; also on foxtail grass at American Fork and oats at Aurora and Mendon.

M. SOLANIFOLII (Ashm.). On *Graminum* at Santa Clara, May 1, 1934.

M. PISI (Kalt.). Numerous winged specimens collected upon various grasses and wheat, but probably all were accidentals.

MYZUS PERSICAE (Sulzer). On *Agropyron elongatum* in Logan greenhouse, Dec. 15, 1939 and *Bromus*, Sept. 11, 1937 (K.-M. W. Allen); *Zea mays*, Farmington.

TETRANEURA GRAMINIS Monell. On woolly orchard grass and rice cut grass at Hooper and Ogden, Sept. 15, 1936.

GEOICA PHASEOLI Pass. and G. SQUAMOSA Hart. were collected on grass roots and in ant nests in Logan Canyon, March 24, 1933 (Det. A. C. Maxson).

FORDA OLIVACEA Rohwer. Collected on roots of Bermuda grass at Sunset, Oct. 11, 1936, tall bunchgrass roots at Salt Lake City (Det. A. C. Maxson).



Knowlton, George F. and Fronk. 1942. "Some grass aphid host records (Homoptera)." *Entomological news* 53, 112–114.

View This Item Online: <https://www.biodiversitylibrary.org/item/19815>

Permalink: <https://www.biodiversitylibrary.org/partpdf/28416>

Holding Institution

Smithsonian Libraries and Archives

Sponsored by

Smithsonian

Copyright & Reuse

Copyright Status: In copyright. Digitized with the permission of the rights holder.

Rights Holder: American Entomological Society

License: <http://creativecommons.org/licenses/by-nc-sa/3.0/>

Rights: <https://biodiversitylibrary.org/permissions>

This document was created from content at the **Biodiversity Heritage Library**, the world's largest open access digital library for biodiversity literature and archives. Visit BHL at <https://www.biodiversitylibrary.org>.