

2005 ANNUAL EXHIBITION

Imperial College, London SW7 – 12 November 2005

The following account of exhibits has been compiled by A. M. Jones (British butterflies), J. S. Badmin (British Macrolepidoptera), M. R. Young (British Microlepidoptera), N. M. Hall (Foreign Lepidoptera), P. J. Chandler (Diptera), R. G. Booth (Coleoptera), A. J. A. Stewart (Hemiptera), and M. N. Smith (Hymenoptera and other Orders). The photographs of individual insects were taken by Richard Jones and the cost of printing these was met by a grant from the Hammond Memorial Fund.

About forty members and their guests attended the Society's Annual Dinner which took place in the Senior Common Room at Imperial College immediately following the exhibition. The pre-dinner drinks at the bar allowed everyone to mingle and chat about the day's events. The sit-down meal was most enjoyable and the excellent company entirely relaxed after a day's intense entomology. This is the main occasion when members of the Society can socialise and make new acquaintances and it is hoped that many more members will attend in future.

BRITISH BUTTERFLIES

BAILEY, K.E.J. – Results of breeding experiments during 2005. *Apatura iris* (L.) ab. *iridella* Cabeau, a specimen of a dwarf form that now appears regularly in the exhibitor's inbred stock despite adequate larval food plant. *Euphydryas aurinia* (Rott.) ab. *virgata* Tutt, strong examples of this polygenic form from selected pairings and including a bilateral gynandromorph (Plate 3, Fig. 13). The exhibitor believes that as the characters for ground colour and degree of expression of *virgata* are identical on both sides it is likely that the condition arose from the loss of a Z chromosome at the first cell division after fertilisation (based on related published research). The autosomes are unaffected, but as the male side is unusually small the question was posed whether the lost Z chromosome had been retained on the male side thus giving it a ZZZ configuration and causing the small size? Other *E. aurinia* included examples of the recessive ab. *atratus* Bailey, combined with genes for *virgata*.

Argynnis paphia (L.), extreme ab. *ocellata* Frings and ab. *nigrizina* Frohawk from cold-shocked pupae.

Vanessa cardui (L.) from heat-shocked pupae included extreme ab. *rogeri* Meilhan and ab. *elymi* Rambur (Plate 3, Fig. 4). Similar examples of *rogeri* resulted from very long cold-shocked pupae.

Aglais urticae (L.) ab. *pseudoconnexa* Cabeau, strong examples of this polygenic form, heat shock to pupae of the same stock gave rise to examples of ab. *semiichnusoides* Pronin but suppressed the *pseudoconnexa* characteristics. The same strain gave rise to a single extreme homoeotic example; the right forewing costal segment is completely reproduced in parallel while a central segment is lost with the union of two small central spots. The segment involving the tornal area was more normal. The exhibitor suggests it may be possible that when the wing imaginal discs are a mere strand of cells in the ovum, a morphogen is liberated in the presumptive tornal region, this sets up a concentration gradient as it diffuses towards the presumptive costal cells, where it would be weakest. According to the strength of the morphogen, these early cells are programmed to produce in their successors, cells that are predetermined to make the final segments. The loss of the central segment

due perhaps to cell death might have caused a shift in the concentration gradient and thus faulty programming and the double costal segments. Lewis Wolpert did much work on this process in the 1980s.

Lycaena dispar batavus (Oberthür), an extreme radiated underside form that appeared spontaneously in greenhouse stock of the late H.G. Short. This was almost certainly an unplanned heat-shocked specimen. An attempt to breed from it was unsuccessful as it proved to be sterile; the exhibitor has noted low fertility rates in butterflies from heat-shocked pupae.

BULMAN, C., WIGGLESWORTH, T. & BOURN, N.—A poster exhibit titled: 'Conserving UK Biodiversity Action Plan Butterfly Species in Britain'. The status of *Melitaea athalia* (Rott.) and *Argynnis addipe* (F.) was discussed, the conservation requirements, causes of decline and the range of actions undertaken in recent years by Butterfly Conservation to help address this.

BURROWS, D.—*Gonepteryx rhamni* (L.), a bilateral gynandromorph taken 28.viii.2005 at Lullington Heath, East Sussex (Plate 3, Fig. 3).

BUTLER, A.L.—Results of temperature experiments. *Plebejus argus* (L.) ab. *anticoradiata* Tutt, two females that emerged in July 2004 from pupae subjected to a long cool period. Ten percent of the batch showed a similar degree of variation with the rest ranging through to completely typical (20%). *Satyrrium pruni* (L.) specimens from pupae subjected to cold or heat shock with reduced underside banding, ab. *albobsoleta* Verity. The specimens from cold shock differed to those from heat shock in that they were less well defined, the white bands appearing smudged. Some heat-shocked specimens had other characteristics including elongation of the black markings and/or inward diffused orange markings (Plate 3, Fig. 8). *Euphydryas aurinia* (Rott.) ab. *suffusa* Frohawk, two females that emerged from pupae subjected to multiple cold shocks, from captive bred stock supplied by K. Bailey. Similarly treated *Melitaea athalia* (Rott.) resulted in upper sides ab. *corythallia* Hübn. and undersides ab. *tetramelana* Cabeau.

Two wild taken specimens: *Ladoga camilla* (L.) ab. *nigrina* Weymer, one of seven seen over a period of three consecutive days in July 2005 at a single Northamptonshire woodland. It is known that these sightings included at least three individuals; previous years have only yielded one similar specimen. *Polyommatus coridon* (Poda.) ab. *ultra-albocrenata* Bright & Leeds taken from the Chilterns July 2005.

CALLOW, M.—*Polyommatus bellargus* (Rott.), a rare mixed gynandromorph or intersex (Plate 3, Fig. 5), captured 2.vi.2004. A largely female specimen but with the upperside right forewing slightly smaller than the left and with an extreme mosaic of blue male colouration. The underside appears entirely typical. This bears some resemblance to the famous intersex specimens of *Polyommatus coridon* (Poda) ab. *roystonensis* Pickett, that used to be taken at Royston, Hertfordshire in the early part of the last century.

FENSOME, B.—Butterflies taken or bred over the last few years. *Maniola jurtina* (L.) ab. *anticrassipuncta* Leeds, a female from Bedfordshire. *Melanargia galathea* (L.) ab. *galaxaera* Esper and a dark suffused male *Pyronia tithonus* (L.) both from Dorset. *Polyommatus coridon* (Poda.), two ab. *obsoleta* Tutt, a male ab. *livida* Bright & Leeds, a female ab. *radio* Bright & Leeds with a very dark ground colour ab. *atrescens* Tutt and a female with a typical left hand side and ab. *radio* right hand side (Plate 3, Fig. 7).

Lycaenid butterflies resulting from chilled pupae, *P. coridon*, *Aricia agestis* (D. & S.), *Polyommatus icarus* (Corv.), and *Polyommatus bellargus* (Rott.) with either reduced or elongated underside spotting or upperside colour change.

HALSEY, J. – An example of a *Lampides boeticus* (L.) reared from sugar snap peas imported from Kenya.

JONES, A.M. – *Pyronia tithonus* (L.) ab. *albinotica* Goodson, a female captured 7.viii.2004. This laid 37 ova before it died, 12 reached maturity but the adults (all type) showed little interest in pairing, though two ova eventually proved fertile. *Maniola jurtina* (L.) ab. *grisea-aurea* Oberthür, a female captured 20.vii.2005. *Argynnis paphia* (L.) ab. *nigricans* Cosmovici, a male and female (Plate 3, Fig. 2). Both captured during July 2005 and clearly demonstrating the result of hot June weather giving shocks to the wild pupae. Numbers of less extreme examples were also noted at several localities.

Pieris napi (L.) ab. *fasciata* Kautz, extreme specimens bred in an F₂ from a *fasciata* female of the English ssp. *sabellicae* Stephens. The F₂ was very variable and the strain is being maintained for further study.

Polyommatus icarus (Rott.) ab. *pallida* Tutt, a chance breeding. A female specimen from an ab. *radiata* Courv. strain of *icarus* was out-crossed to a type wild male in June 2005 in order to keep the *radiata* gene. The F₁ produced both typical and ab. *extensa* Tutt specimens. Pairing these gave an F₂ in September/October of 45 butterflies some being good *extensa* and surprisingly two male (one crippled) and three female *pallida*, 11%. This seems below the normal percentage expected of a recessive gene but in a previous chance breeding of *pallida* in 2002 only 8% of a much larger brood were aberrations and the gene seemed to have a serious weakening effect, specimens often being small or crippled.

Lycaena phlaeas (L.) ab. *extensa-conjuncta* Tutt, a female captured 3.ix.2005.

MCCORMICK, R.F. & HATCH, S. – *Aricia artaxerxes* (F.), recorded during day time searching of grass stems, Straloch Estate, 6.vii.2005.

PORTER, J. – A worn male specimen of the South-East Asian species *Precis lemonias* (L.) (The Lemon Pansy), captured in the exhibitor's hands 18.vi.2005 on the window of a fashion shop in Church Street, Kingston-Upon-Thames, Surrey (TQ179692, VC17). This is undoubtedly an accidental introduction or an escapee from captivity. The London Butterfly House at Syon Park, 7km due north, confirmed that they had the species on the wing during the date of capture and there are also a number of SE Asian food outlets in the area which could have been a source of the insect.

REVELS, R.C. – *Vanessa cardui* (L.) ab. *rogeri* Meilhan, a specimen bred by chance, ix.2003 by Mr A. Darrington from larvae collected from thistles during viii. 2003 for the purpose of photographing the life cycle. Whilst in captivity the larvae had been kept in plastic boxes well away from any temperature extremes. All the other butterflies were typical. The aberration was very weak, unable to fly and could barely walk across the bottom of the cage.

Polygonia c-album (L.), a bilateral gynandromorph, this emerged ix.2004 from stock bred to allow photography of the species hatching from the pupa. Only after the series of photographs had been taken did the exhibitor realise that the markings were different on each side.

Lycaena dispar batavus (Oberthür), with an extreme radiated under side (Plate 3, Fig. 11), bred by chance in viii.2005. This was reared with 25 typical butterflies in a well-ventilated greenhouse, it is assumed that it received an accidental heat shock at the time of pupation (see notes on K. Bailey's exhibit).

Polyommatus coridon (Poda) ab. *radiata* Bright & Leeds the only aberration from a brood of 20 newly-formed pupae subjected to a week in a refrigerator at 1–2°C. *Polyommatus bellargus* (Rott.) ab. *striata* Tutt (Plate 3, Fig. 6), two batches of 15 pupae were treated in a similar way to those of the *P.coridon*. The first batch

produced four male ab. *striata* and one approaching ab. *krodeli* Gillmer with tiny streaking spots. The second batch and a control of 30 reared out of doors emerged as types.

ROOK, S. – *Polyommatus coridon* (Poda) ab. *alba* Bright & Leeds (Plate 3, Fig. 10), a male captured in Dorset, 2005. A *Melanargia galathea* (L.), with black suffused hind wings.

TEBBUTT, P. – Butterflies resulting from temperature experiments included; *Lycaena dispar batavus* (Oberthür), four quite different specimens from long cool shock, a female upper side ab. *sagittifera* Hormuzaki, two undersides with extended spotting and a male ab. *infraparpipuncta* Lempke with small spotting. Similarly treated *Satyrrium pruni* (L.) produced parallel results to those of A. Butler (see exhibit note) including one extreme example with elongated black wedges and the white 'hairstreak' replaced with black. *Thecla betulae* (L.), a specimen of ab. *virgata* Tutt, from long cool shock and an extreme ab. *unistrigata* Schultz with the single white line radiating basally. This resulted from a single cold shock (Plate 3, Fig. 12).

Wild taken aberrations included a worn but intact female *Ladoga camilla* (L.), ab. *obliterae* Robson & Gardner, a male *Melanargia galathea* (L.) with a black left hind wing *Thymelicus sylvestris* (Poda) with whitish forewings (Plate 3, Fig. 9) and a similar *Thymelicus lineola* (Ochrs.), though probably pathological. An *Aricia artaxerxes* (F.) ab. *vedrae* Harrison a short series of *Polyommatus coridon* (Poda) females with varying amounts of blue scaling.

WINOKUR, L. – *Apatura iris* (L.), A male underside (Plate 3, Fig. 1), the only aberration from a brood of eight specimens reared in the F1 from a female taken near Woodmancott, Hampshire in 2004. The specimen is noticeably smaller than the type and has more deeply scalloped wing margins, with an increase in maroon colouration on the hind wings and marginal grey rays.

BRITISH MACROLEPIDOPTERA

BROOK, S., DAVIS, A. & PARSONS, M. – A poster exhibit on The Action for Threatened Moths Project. The project aims to oversee the implementation of the UK's Biodiversity Action Plans for over 50 species of moths. UK BAP is the government's response to the Convention on Biological Diversity – see www.ukbap.org for further details. Distribution maps and ecological requirements of a small selection of species covered by the project were displayed.

BROOKER, R.J. & MASTERS, I.D. – *Idaea degeneraria* (Hübner), a suspected immigrant, Middleton-on-Sea, W. Sussex (VC13), 29.v.2005. An asymmetrical aberration of *Colotois pennaria* (L.), Owlsmoor, Sandhurst, Berks. (VC22), 15.xi.2005 (IDM).

CLANCY, S. – Unusual moths from Kent and the South-East in 2005: *Cyclophora annularia* (F.), first area record, suspected migrant, Lydd-on-sea, 1.v.2005; *Scopula emutaria* (Hübner), a heavily suffused individual, Dungeness, 9.vi.2005; *Spargania luctuata* (D. & S.), an aberrant form, Denge Wood, Kent, 16.vi.2005; *Eupithecia abietaria* (Goeze), a probable immigrant, Biddenden, Kent 20.vi.2005; *Chiasma clathrata* (L.), two examples of several immigrant specimens recorded in May that resemble the Irish race *hugginsi* (Baynes); *Chiasma aestimaria*, bred from female taken in September 2004 that was exhibited the previous year; *Macraria signaria* (Hübner) an immigrant, Dungeness, 10.vii.2005 and two specimens from Barham, Kent, 13.vii.2005, where a resident population has now been discovered; *Pseudopanthera macularia* (L.), an unusually marked individual, at light, Headley Warren, Surrey, 1.vi.2005; *Lymantria dispar* (L.), Lydd-on-sea, 1.viii.2005 and

Dungeness, 10.viii.2005; *Rhyacia simulans* (Hufn.), first area record for nine years, New Romney 20.ix.2005; *Acrionicta auricoma* (D. & S.), third area record, 2.v.2005; *Platyperigea kadenii* (Frey.), two of at least 60 specimens recorded in New Romney, suggesting the moth is now almost certainly established as a resident in the area; *Tristales emortualis* (D. & S.), a probable immigrant, Greatstone 24.vi.2005.

CLARKE, J. – Moths recorded during the year. *Zygaena filipendulae* (L.) ab. *aurantia* Tutt, Brandon Suffolk, 14.vii.2005; *Aspitates gilvaria* ssp. *burrenensis* Cock., netted in flight, Knockaunroe, Kilnaboy, Burren, Ireland; 30.vii.2005; *Rhodometra sacraria* (L.) ab. *sanguinaria* Esp., Tolver, Penzance, Cornwall, 16.x.2005; *Archanara algae* (Esp.), Loch Ballyveleghan, Burren, Ireland, 5.viii.2005; *Lithosia quadra* (L.), at mv, Tullage, Kilfenora, Ireland, 30–31.vii.2005; *Calamia tridens* ssp. *occidentalis* Cock. on grass stems, Knockaunroe, Kilnaboy, Ireland, 30.vii.2005; *Acontia lucida* (Hufn.) and *Antigastra catalaunalis* (Dup.) Freshwater Bay, Portland, Dorset, 1.ix.2005; *Conistra erythrocephala* (D. & S.), Crawley Down, W. Sussex, 30.ix.2005; *Noctua janthina* (D. & S.), West Hythe, Kent, 27.viii.2005; *Spodoptera exigua* (Hübner.) and *Spodoptera ciliatum* (Guen.), West Hythe, Kent, 16.x.2005; *Eublemma purpurina* (D. & S.), West Bexington, Dorset, 31.viii.2005; *Eublemma parva* (Hübner.), Tolver, Penzance, Cornwall, 17.x.2005; *Hypena obsitalis* (Hübner.), Swanage, Dorset, 9.ix.2005; *Mythimna loreyi* (Dup.), West Bexington, Dorset, 30.viii.2005; *Acrionicta menyanthidis* (Esp.), Wixall, Shropshire, 9.vii.2005; *Apamea ophiogramma* (Esp.), Lopham Fen, Suffolk, 13.vii.2005.

CRONIN, A.R. – Live *Callimorpha dominula* (L.), F₁₅ generation, one typical, two form *bimacula* Cock., from stock originating from Merseyside.

DEANS, M. – Macromoths recorded at light, Bawdsey Peninsula (TM335380), East Suffolk (VC25), 2004–2005. *Pelosia muscerda* (Hufn.), *Eilema pygmaeola pygmaeola* (Doubt.), *Nola aerugula* (Hübner.) all rare migrants in Suffolk. *Euxoa nigricans* (L.), *Noctua janthina* (D. & S.), *Peridroma saucia* (Hübner.), *Mythimna vitellina* (Hübner.), *Mythimna unipuncta* (Haw.), *Xylena vetusta* (Hübner.) second recent county record, *Conistra erythrocephala* (D. & S.) first and second county records, *Cryphia algae* (F.), *Luperina nickerlii* (Frey.) ssp. *demuthi* Goater & Skinner, *Platyperigea kadenii* (Frey.), first county record, *Helicoverpa armigera* (Hübner.) two specimens, *Chrysodeixis chalcites* (Esp.), two specimens, part of an influx recorded at Bawdsey in 2005.

DOBSON, A.H. – Aberrations from N Hampshire, VC12: *Operophtera brumata* (L.), Greywell, 21.xi.2004, (P.A. Boswell, leg.); *Drymonia ruficornis* (Hufn.) and *Orthosia munda* (D. & S.), Pamber Forest Farm, 11.iv.2005; *Xanthia aurago* (D. & S.) var. *rutilago* F., Bramley Frith Wood, 15.iv.2005; *Hoplodrina ambigua* (D. & S.), Basingstoke, 5.vii.2005; *Atolmis rubricollis* (L.), Healey Gravel Pits Reserve, V12, male and female, 18.vi.2005, a new site; *Mythimna albipuncta* (D. & S.), Kempshott, 31.viii.2005, (G.A. Henwood, leg.).

HALL, N.M. – Lepidoptera 2005. *Hoplodrina ambigua* (D. & S.), an aberration with linked orbicular and reniform stigmata, Reading, Berks, 30.viii.2005; *Atolmis rubricollis* L., Reading, Berks, 23.vi.2005. A visit to Hastings Country Park, East Sussex on 13–16.vii.2005 proved very productive: most of the records could be explained by local movements of up to 14 kilometres, but there was some immigration. Anyone wishing to record overnight in the Park should contact Andy Phillips who is the Nature Reserves Officer for Hastings Borough Council (01424 451043), since overnight parking is not normally allowed. Species of interest were; *Noctua janthina* (D. & S.), Firehills Picnic Site, 13.vii.2005 and Norths Seat, 14.vii.2005, together with *N. janthe* (Borkh.); *Cucullia asteris* (D. & S.), Firehills Picnic Site, 13.vii.2005; *Tristates emortualis* (D. & S.), Firehills Picnic Site,

13.vii.2005; *Hyales gallii* Rott., Firehills Picnic Site, 15.vii.2005, *Meganola albula* (D.& S.), Helipad, 16.vii.2005, and *Parastichtis suspecta* (Hübner), 16.vii.2005. A visit to Hastings on 27–28.viii.2005 was far less productive. The following were of note; *Mythimna albipuncta* (D.& S.), *Mythimna vitellina* (Hübner) and *Nycteola revayana* (Scop.), Firehills Picnic Site, 27.viii.2005; *Mythimna pallens* (L.), an orange form, Firehills Picnic Site, 28.vii.2005. *Macrochilo cribrumalis* (Hübner) taken at light, North's Seat, Hastings, 11.vii.2005 and a specimen from Rye Harbour LNR (Chalk Curve), East Sussex, 11.vii.1999 for comparison.

HALSEY, J. – *Platyperigea kadenii* (Frey.), Bonchurch, Isle of Wight, 26.ix.2005, first island record, five additional specimens recorded during the year; *Aplasta ononaria* (Fuessli) a rare migrant, first island record, Bonchurch, 17.viii.2005; *Dryobota labecula* (Esp.), Bonchurch, Isle of Wight, 21.x.2005; *Petrophora chlorosata* (Scop.), a strikingly-marked specimen, Wicken Fen, 14.vi.2005; *Agrochola lychnidis* (D.& S.), a very dark specimen, captured at actinic light, Earnley, W. Sussex, 10.x.2005 and *Xestia agathina* ssp. *hebridicola* (Stdgr.), Glen Borrowdale, Ardnamurchan, 30.viii.2005.

HARMAN, T.W. – Lepidoptera records from Turville Heath Farm, Turville Heath, Henley-on-Thames, Oxon. Three specimens of *Colocasia coryli* (L.), one typical, one form *melanotica* Haver. and one extreme f. *melanotica* Haver.; *Abrostola triplasia* (L.), first site record, 2.vii.2005; two specimens of *Hepialus hecta* (L.), one typical and one extreme variety with gold margins to forewings, 16.vi.2005; a series of *Xanthia citrigo* (L.), bred from wild-collected larvae; a well-marked specimen of *Erannis defoliaria* (Cl.), 30.xi.1995; *Parascotia fuliginaria* (L.), 12.vii.2005; two specimens of *Nycteola revayana* Scop. showing various forms; *Colostygia olivata* (D.& S.) 12.viii.2003; a well-marked specimen of *Hydriomena furcata* (Thunb.), 13.vii.2005; *Apamea sublustris* (Esp.), 23.vi.2001; a short series, taken and bred of *Panemeria tenebrata* (Scop.), 2005.

HARPER, M. – A melanic specimen of *Omphaloscelis lunosa* (Haw.), captured at mv light, Ledbury, Herefordshire, 24.viii.2005.

HAYWARD, R. – Moths at mv light or bred, mainly in 2005. (1) Migrants – *Rhodometra sacraria* (L.), Slough, VC24, 29.x.2005; *Mythimna albipuncta* (D.& S.), Slough, 8.ix. and 10.ix., representing third and fourth vice-county records; *Mythimna vitellina* (Hübner), Ermington, Devon, 14.ix.2005. (2) Varieties – *Hepialus humuli* (L.), yellow scales and hairs replaced by red, Slough, 1.vi.2005 (Plate 4, Fig. 2); dwarf form of *Hepialus sylvina* (L.), Slough, 5.ix.; *Hepialus fusconebulosa* (Degeer) form *gallicus* Led., Gussetts Wood, Bucks, 11.vi.; *Cyclophora punctaria* (L.), with heavy cross-lines on all wings, Slough, 18.v.; *Cyclophora linearia* (Hübner), brick red specimens that emerged 19.iv. and 20.iv.2005, derived from adults taken in Gussetts Wood, Bucks, 18.vii.2004; *Drymonia ruficornis* (Hufn.), dark form, Slough, 10.iv.; *Xylocampa areola* (Esp.), pale form, Slough, 1.iv.; *Dryobotodes eremita* (F.) ab. *nigra* Cock., Black Park, Bucks, 5.v.; *Colocasia coryli* (L.), exceptionally pale specimen, Slough, 29.iv.; *Abrostola tripartita* (Hufn.) form *plumbea* Cock., Slough, 17.viii.; *Lithosia quadra* (L.), one individual with grey terminal area paler than ground colour, the other with the yellow terminal area paler than ground colour, Leagh South, Co. Galway, 3.viii.2005. (3) Interesting species. *Eriogaster lanestris* (L.), adults emerged 23.ii. and 15.iii.2005 from larvae collected from The Burren, Co. Clare, 2001; *Clostera pigra* (Hufn.), ex -2004 larvae from Lough Bunny, Co. Clare, emerged 24.iv. and 3.v.2005; *Eilema sororcula* (Hufn.), Slough, 3.v.2005 and Black Park, Bucks, 26.v.2005, becoming more plentiful at both sites; *Euxoa tritici* (L.), Black Park, Bucks, 30.viii.2005; *Hecatera dysodea* (D.& S.), emerged 21.v. and 22.vi.2005 from larvae collected from Middle Green, Bucks, 2004, and adults in

garden mv trap, Slough, 23.viii. and 3.ix.2005; *Lithophane hepatica* (Clerck), Slough, 27.iii.2005; *Conistra rubiginea* (D. & S.), Slough, 18.x.2005, second record in 28 years; *Xanthia gilvago* (D. & S.), Slough, 6.x.2005; *Acronicta euphorbiae* (D. & S.) ssp. *myricae* Guen., F₁ adults emerged 32.iv. and 26.iv.2005 from larvae collected from Leigh South, Co. Galway, 2004; *Apamea ophiogramma* (Esp.), Slough, 1.viii.2005, second individual in 28 years; *Hoplodrina ambigua* (D. & S.), Slough, 30.x.2005, possible second brood; *Macrochilo cribrumalis* (Hübner), first VC24 record, Slough, 29.vi.2005.

HECKFORD, R.J. – *Heterogenea asella* (D. & S.), first county record for >100 years, Lower Hooksburry Wood, Devon, 22.viii.2004. Larva found feeding on underside of *Quercus robur* leaf, moth emerged 4.v.2005. *Xanthorhoe montanata* (D. & S.) (Plate 4, Fig. 12), specimen with median fascia obsolete, Cliffs of Magho, Co. Fermanagh (H33), 20.vi.2004.

HENWOOD, B. – *Acherontia atropos* (L.) bred from a fully-grown larva found wandering at Exminster Marshes, S. Devon (VC3), 26.viii.2004, adult emerged 30.iv.2005.

HIGGOTT, J.B. – Notable moths from Suffolk. *Nola aerugula* (Hübner), a rare migrant, Landguard Point, 21.vii.2004, recorded by M. Marsh; *Hecatera dysodea* (D. & S.), a former resident species, now migrant, Landguard Point, 31.vii.2004; *Aplasta ononaria* (Fuessl.), first county record, Orford Ness NNR, 10.viii.2003; *Eilema pygmaeola* (Doubt.), Orford Ness NNR, 1.viii.2004 (J. Askins); *Eilema caniola* (Hübner), first county record, Orford Ness NNR, 24.vi.2003 (J. Askins); *Chortodes extrema* (Hübner), third county record, Orford Ness NNR, 13.v.2004 (J. Askins); *Actinotia hyperici* (D. & S.), second British record, Landguard Point, 6.v.2003 recorded by N. Odin. Three additional specimens have since turned up, but though the site supports a profusion of *Hypericum*, there is no evidence to date of breeding. *Thaumetopoea processionea* (L.), Landguard Point, 9.viii.2004 (N. Odin); *Spodoptera littoralis* (Boisd.), first county record, Ipswich, 19.vii.1998; *Chrysodeixis chalcites* (Esp.), Rushmere St. Andrew, 6.ix.2005 and Dunwich Heath NT, 5.ix.2003.

JENKINS, A. – Unusual moths in 2005: *Cryphia algae* (F.), >30 individuals observed at mv light, West Kent, 28.vii.2005 and 18 individuals at same locality, 2.viii.2005, indicating this moth is now well-established and breeding in U.K.; *Thera juniperata* (L.) ssp. *scotica* (White), bred from larva collected from juniper in the Cairngorms; *Catarhoe cuculata* (Hufn.), taken at mv light, Cambridgeshire; *Eugnorisma glareosa glareosa* (Esp.), taken at mv light Aviemore.

KNILL-JONES, S.A. – (1) Moths from Totland, Isle of Wight. A unicolorous straw-coloured form of *Mythimna vitellina* (Hübner), 23.vii.2005; a well-marked form of *Xestia xanthographa* (D. & S.), 1.xi.2005; *Lampropteryx suffumata* (D. & S.), 1.iv.2005; a very late third generation individual of *Peribatodes rhomboidaria* (D. & S.), 4.xii.2004; a very late second generation individual of *Apamea monoglypha* (Hufn.), 6.xii.2004; *Epirrita autumnata* (Borkh.), 30.x.2005; *Trichopteryx polycomata* (D. & S.), 2.iv.2005, new VC record; *Abraxas sylvata* (Scop.), 31.vii.2005; *Macraria alternata* (D. & S.), 5.vii.2005; *Xanthorhoe designata* (Hufn.), an individual with differing forewings, 25.v.2005; *Dicallomera fascelina* (L.), 18.vii.2005; *Agrotis segetum* (D. & S.), 4.viii.2005; *Dryobota labecula* (Esp.), 30.x.2005; *Platyperigea kadenii* (Frey.), 16.x.2005; small individuals of *Agrotis trux* (Hübner), 11.vii.2005; *Agrotis clavis* (Hufn.), 1.vii.2005; *Agrotis ipsilon* (Hufn.), 11.vii.2005; *Hoplodrina ambigua* (D. & S.), 3.viii.2005; *Heliothis armigera* (Hübner), 28.x.2005; *Ochropleura plecta* (L.), 12.viii.2005, wing expanse 18 mm. *Autographa gamma* (L.), with differing forewings, 6.x.2005; *Xestia ditrapezium* (D. & S.), 14.vi.2005; a large individual of *Xestia c-nigrum* (L.), 16.vi.2005; *Hoplodrina ambigua* (D. & S.) showing joined discal

spots, 16.vi.2005; *Lacanobia oleracea* (L.), with elongated discal spot, 24.vi.2005; an extreme form of *Agrotis exclamationis* (L.), 11.vii.2005; a nearly unicolorous buff individual of *Omphaloscelis lunosa* (Haw.), 24.ix.2005; a near albino individual of *Phragmatobia fuliginosa* (L.), 14.viii.2005; a pale brown form of *Nycteola revayana* (Scop.), 13.ix.2005; a melanic form of *Idaea biselata* (Hufn.), 20.viii.2005; a well-marked *Schranksia costaestrigalis* (Steph.), 20.viii.2005; *Elaphria venustula* (Hübner), 23.vi.2005; two pink-coloured *Rhodometra sacraria* (L.), 9 & 10.x.2005 and a dark melanic *Agrotis segetum* (D. & S.), 10.x.2005. (2) Two *Bembecia ichneumoniformis* (D. & S.), attracted to pheromones, Afton Down, Isle-of-Wight, 22.vi. and 8.vii.2005.

KOLAJ, A. – *Xanthorhoe fluctuata fluctuata* (L.) (Plate 4, Fig. 15), aberrations taken in exhibitor's garden, Tile Hill, Coventry 10.viii.2005 & 10.ix.2005. A melanic form of *Eupithecia exigua exigua* (Hübner), confirmed by genitalia examination and possibly the first melanic example from Waverley Wood, Warks. Also exhibited were: *Perizoma minorata* (Treit.) ssp. *ericetata* (Steph.), bred from larva collected from Cairngorms, Scotland, 2.ix.2004 and *Lithomoia solidaginis* (Hübner), ex female from Balgowan, Highlands, Scotland, 01.ix.2004.

MCCORMICK, R.F. – (1) Interesting moths from Devon in 2005. *Heterogenea asella* (D. & S.), Cadworthy Wood, near Shaugh Bridge, Dartmoor, nearly full grown larvae, 10.ix., R.McC. & R. Heckford; *Synanthedon vespiformis* (L.), larvae from Stover Park area, Newton Abbot, 31.iii.; *Cyclophora pendularia* (Clerck), at mv light, Hatherleigh, 17.vi., Rob Wolton, first specimen seen in Devon since 1936; *Cyclophora porata* (L.), at light, Bere Alston, 8.vi., Tom Sleep; *Idaea trigeminata* (Haw.), Kingsteignton, 23.vi., first confirmed Devon record. *Idaea degeneraria* (Hübner), Slapton Reed Beds, 2.vi., Jeff Clarke (confirmed by photograph of moth); Woodbury Salterton, 13.vi., Mike Meehan; and Dawlish Warren, 14.ix., at light, Ivan Lakin, all assumed to be migrants. *Costaconvexa polygrammata* (Borkh.), near Lyme Regis, 27.iii., Oliver Woodland, second county record. *Eulithis mellinata* (F.), Harcombe Wood, Chudleigh, 18.vii., first Devon record this century; *Thera cupressata* (Geyer), Holcombe, 24.vi., a new Devon locality; *Perizoma taeniata* (Steph.), Watersmeet, 12.vii., a species now known to occur from Lynmouth, along Lyn Cleave, Myrtleberry Cleave through to Hillsford Bridge; *Eupithecia simpliciatata* (Haw.), Harcombe Wood, Chudleigh, 18.vii., R.McC., and Prawle Point, 22.vii., Ivan Lakin. *Furcula bicuspis* (Borkh.), New Bridge Wood, Holne, near Ashburton, 27.v., also Shaugh Prior, Shaugh Bride, Dartmoor, vi.2005, taken at light, Andy Trout. *Furcula bifida* (Brahm), Hatherleigh area, 17.v. at light, Rob Wolton; *Ptilodon cucullina* (D. & S.), Watersmeet, 12.vii.; *Leucoma salicis* (L.), Teignmouth, 30.vii.; *Lithosia quadra* (L.), Brooking's Wood, Noss Mayo, 9.viii.; *Agrotis crassa* Hübner, Torquay, 10.viii., at light, second county record, Bill Deakins; *Sideridis albicolon* (Hübner), Northam, Bideford, 13.vii., at light, D.E. Paull, also at Dawlish Warren, 28.vi., at light, Ivan Lakin; *Papestra biren* (Goeze), Princetown, Dartmoor, 30.v., at mv light, Paul Stubbs; *Hadena albimacula* (Borkh.), Branscombe to Beer undercliff, 10.vi.; currently the only known locality for this species in Devon. *Orthosia miniosa* (D. & S.), New Bridge Wood, Ashburton, 27.v., larvae in spun oak leaves; *Mythimna putrescens* (Hübner), Northam, Bideford, 20.v., D.E. Paull and Prawle Point, 22.vii., mv light, Ivan Lakin; *Mythimna loreyi* (Dup.), Yelverton, 8.viii., Richard Bolster, also Prawle Point, 18.viii., Ivan Lakin; *Moma alpium* (Osbeck), new sites at Palmers Hill Copse, Kingscott, 21.vi., and Torrington Common, where a larva was found earlier in the year by Steve Hatch; *Trachea atriplicis* (L.), third county record at Crownhill, Plymouth, 6.vii., J. Beswetherick; *Cosmia affinis* (L.), Brooking's Down Wood, Noss Mayo, 9.viii.; *Eublemma parva* (Hübner), Bere Alston, 8.vi., at mv light, Tom Sleep; *Earias clorana* (L.), in the exhibitor's garden, Teignmouth, 24.vi., far

from known wetland localities; *Catocala nymphagoga* (Esp.), Holcombe, near Teignmouth, 28.vi., probable fourth British record; *Lygephila pastinum* (Treit.), Braunton Burrows, 9.vii., at mv light, Steve Hatch. This is the first north Devon record since 1971. (2). Variations in 2005. *Epirrhoe alternata alternata* (Müll.) (Plate 4, Fig. 4), at light, Tavistock, 16.viii., passed to me for identification by Fred Slatter; *Lampropteryx otregiata* Met, (Plate 4, Fig. 5), undercliff near Lyme Regis, (Devon), 15.viii.; *Ecliptopera silaceata* (D. & S.) (Plate 4, Fig. 6), Teignmouth, 26.v.; *Agrotis clavis* (Hufn.), exhibitor's garden, Teignmouth, 21.vi.

MCCORMICK, R.F. & HATCH, S. – Records from Scotland in 2005. *Scopula ternata* (Schrank), Rotheimurchus Estate picnic area, 2.vii.; *Entephria flavicinctata* ssp. *ruficinctata* (Guen.), larvae on stonecrop, Pass of Drumochter, Allt an Stalcair waterfall, 5.vii.; *Glacies coracina* (Esp.), Dalwhinnie, Coir nan Cisterchan, up to 20 adults seen flying in sunshine, 4.vii.; *Parasemia plantaginis plantaginis* (L.), F₁ offspring, originating from one female, Braemar, Meikle Elrick, 3.vii.; *Blepharita adusta* (Esp.), common at light, Devils Elbow, Glen Shee, Braemar, 5.vii.; *Syngrapha interrogationis* (L.), at mv light, Brerachan Forest, 4.vii.2005.

MERRIFELD, R.K. & MERRIFELD, R.M. – Photograph of a mating pair of *Synanthedon vespiformis* (L.) observed at Barnack Hills and Holes, Barnack, Peterborough, Northants (TF0704), 3.vi.2005. The female had noticeable red edges to its wings, referable to form *rufimarginata* Spul.

OWEN, J. – Species taken at mv light in exhibitor's garden, Dymchurch, Kent in 2005. Six additional species were recorded during 2005 bringing the total to 496 since 1974. *Eupithecia virgaureata* (Doubleday), 17.viii.; *Drepana curvatula* (Borkh.) 17.viii. & 1.ix.(exhibited); *Platyperigea kadenii* (Frey.), 10.x.; *Colostygia multistrigaria* (Haw.) 28.iii.; *Apamea sublustris* (Esper) 15.vii.; and *Perizoma albulata* (D. & S.), 27.v. Also exhibited were *Eurois occulta* (L.), 9.viii., fifth garden record and *Noctua janthina* (D. & S.), 10.viii., by far the latest date in the year for this species.

PARSONS, M., CONRAD, K., FOX, R., WOIWOD, I. & WARREN, M. – A poster exhibit summarising trends in widespread and common British moths. The Rothamsted Insect Survey has operated a Great Britain-wide network of light-traps since 1968. Rothamsted Research and Butterfly Conservation, with generous funding from the Esmée Fairbairn Foundation have produced a report summarising estimated national indices and population trends for over 300 common and widespread macro-moth species. The total number of macro-moths captured has decreased by 32% during the sampling period and about two-thirds of species show decreasing trends. Most species are declining in southern Britain, but some species e.g. *Deileptenia ribeata* (Clerck) have increased spectacularly.

PATTON, S. – A tiger moth, *Hyphoraia testudinaria* (Geoff.) Arctiidae, new to Britain, captured at mv light, Chichester, W.Sussex, 30.v.2005 (Plate 4, Fig. 1).

PHILLIPS, J.W. – Macrolepidoptera taken or bred during 2005. *Mythimna litoralis* (Curtis) and *Euxoa tritici* (L.), Sinah Common, Hayling Island, Hants, 20.vii.; *Pasiphila debiliata* (Hübner) bred from larvae collected Friday Street, Abinger Common, Surrey, 2.v.; *Laothoe populi* (L.), buff-coloured form, Northney, Hayling Island, Hants, *Mimas tiliae* (L.) ab. *brunnea* Bartel, Northney, 21.vi.; *Eilema caniola* (Hübner), migrant at mv light, fourth VC11 record, Northney, Hayling Island, 16.vii.. *Noctua orbona* (Hufn.), bred ex larvae, Tunstall Common, East Suffolk, 2.x.; *Ennomos quercinaria* (Hufn.), bred ex female, Tilshead, Wilts, 31.vii.2004, *Eilema complana* form *sericea* (Gregs.), Shropshire; *Eilema complana* (L.) nominate form; *Atolmis rubricollis* (L.), W. Sussex, 19.vi.2005.

PLANT, C.W. – Aberrant examples of *Anticlea derivata* (H.-S.) and *Epirrhoe alternata* (Müll.) each shown alongside a typical example for comparison. Specimens

of *E. alternata* from Sawbridgeworth, Herts., 27.vii.1990; Wyre Forest, Worcs., 8.viii.1988 (CWP), and Bishops Stortford, Herts., 30.vii.2005 (J. Fish). *Anticlea derivata*, aberrant form from Ashwell, Herts., April 2005, coll. V. Judd, (Plate 4, Fig. 3).

ROUSE, T. – Moths from two localities in East Kent (VC15). *Conistra ligula* (Esp.) 14.x.2005; *Agrius convolvuli* (L.), heavily-marked female, 13.ix.2005; *Idaea dimidiata* (Hufn.) 3.viii.2005, all from Densole. *Cryphia algae* (F.), 22.vii.2005, *Platyperigea kadenii* (Frey.) and *Noctua janthina* (D. & S.), 27.vii.2005 & 4.viii.2005, from Folkestone Warren.

SHERMAN, N. – Notable moths from Ipswich Golf Club (TM208432), Suffolk (VC25) in 2005. *Pelosia muscerda* Hufn., presumed migrant, second site record, 31.viii.2005; *Dicallomera fascelina* (L.), first Suffolk record for over 100 years, 1.viii.2005; *Trisateles emortualis* (D. & S.), first Suffolk record, 22.vi.2005.

SMITH, E.G. & SMITH, M.H. – *Agrotis trux* ssp. *lunigera* Stephens, first record for Wiltshire, VC8, Bullen Hill Farm, 13.vii.2005. Various aberrations and variations, all from Wiltshire: *Anticlea badiata* (D. & S.), Green Lane Wood, 27.iii.2003; *Opisthograptis luteolata* (L.), Bullen Hill Farm, 9.viii.2003; *Colotois pennaria* (L.), Trowbridge, 2.x.2004; *Crocallis elinguaris* (L.), Bullen Hill Farm, 7.viii.2005; *Orthosia gothica* (L.), Bullen Hill Farm, 10.vii.2005, *Hydraecia micacea* (Esp.), Bullen Hill Farm, 26.ix.2000.

STERLING, P.H. – Species collected at mv light in Dorset (VC9) during 2005: an aberration of *Lomographa temerata* (D. & S.) (Plate 4, Fig. 7) by River Eden, 20.ix.2005; *Eilema sororcula* (Hufn.) aberration, Warre Wood, 10.vi.2005, *Nola chlamitulalis* (Hübner), second specimen recorded from British mainland, River Eden, 19.vi.2005; *Nycteola asiatica* (Krulikovsky) from Weymouth, 3.ix.2005, together with a specimen of *N. revayana* (Scop.) collected in Dorset in 2005 by J. Burge for comparison.

WARING, P. – (1) Provisional data on the performance of the new 'Moonlander' light-trap now being supplied by Worldwide Butterflies Ltd.. The two most novel features of the design are that the entrance funnel to the trap is set at the base and the light source is set within the body of the trap as a safety feature. The trap was tested as supplied, and in an inverted position with the entrance funnel to the trap in the more usual position at the top. More moths tended to be caught with the trap in the inverted position. Comparison with other trap designs was not reported. (2) Photographs of Otmoor in Oxfordshire, which is to be visited by BENHS for a series of annual meetings (2004–2008).

WARING, P. & DAY, J.D. – Unusual moths from Potton, Bedfordshire, 4.viii.2005: *Cosmia diffinis* (L.), *Cosmia affinis* (L.), *Ennomos fuscantaria* (Haw.) and *Idaea rusticata atrosignaria* Lempke.

WHEELER, P.R. – Noteworthy moths from Surrey 2000–2005. Wetland species: *Scopula immutata* (L.), Walsham Meadows, 17.vii.2000; *Mythimna obsoleta* (Hübner), Papercourt Marshes, 16.vii.2003; *Archanara sparganii* (Esp.) and *Archanara algae* (Esp.), 18.viii.2005, Hedgecourt Lake, *Coenobia rufa* (Haw.), Worplesdon, 5.viii.2003. Species recorded from garden, Chobham (SU977625): *Apoda limacodes* (Hufn.), 24.vi.2001 & 14.vi.2004; *Rheumaptera cervinalis* (Scopoli), 25.iv.2001 & 26.iv.2002; *Euphyia biangulata* (Haw.), 16.vii.2001 & 20.vii.2001; *Eupithecia abietaria* (Goeze), 28.vii.2003; *Euchoeca nebulata* (Scopoli), 15.viii.2001; *Semiothisa wauaria* (L.), 18.vii.2000; *Pachycnemia hippocastanaria* (Hübner), 2.viii.2001; *Epione repandaria* (Hufn.), 9.viii.2000; *Clostera curtula* (L.), 20.iv.2002; *Thumatha senex* (Hübner), 2.vi.2001; *Euoxa tritici* (L.), 2.viii.2004; *Agrotis vestigialis* (Hufn.), 20.vii.2004; *Xestia castanea* (Esp.), 6.ix.2004; *Anarta myrtilli* (L.), 5.viii.2005,

Mythimna conigera (D. & S.), 26.vi.2001; *Ipimorpha retusa* (L.), 1.viii.2001; *Ipimorpha subtusa* (D. & S.), 25.vii.2001; *Parastichtis ypsilon* (D. & S.), 5.vii.2001; *Apamea scolopacina* (Esp.), 16.vii.2001; *Chortodes pygmina* (Haw.), 22.ix.2000 and *Parascotia fuliginaria* (L.), 24.vii.2000. On Chobham Common, near Langshot Bog (SU9763): *Idaea muricata* (Hufn.), 14.vii.2002; *Idaea sylvestriaria* (Hübner), 22.vii.2001; *P. hippocastanaria*, 22.vii.2001; *Clostera pigra* (Hufn.), 23.vii.2003; *Cybosia mesomella* (L.), 25.vi.2001, *Xestia agathina* (Duponchel), first records for Common, 25.viii.2005; *A. myrtili*, ex-larva, 25.vi.2001; *Polia trimaculosa* (Esp.), 25.vi.2002; *Lacanobia contigua* (D. & S.), 22.vi.2005; *Mythimna pudorina* (D. & S.), 25.vi.2001; *Elaphria venustula* (Hübner), 1.vi.2003. *Schrankia costaestrigalis* (Stephens), and *Hypenodes humidalis* Doubl., Langshot Bog, 28.vii.2005.

WINOKUR, L. – *Camptogramma bilineata bilineata* (L.), aberration with two dark cross-bands linked to form a letter 'H', captured Shirley, Southampton, 24.vi.2005.

YOUNG, M. – Above the tree-line, moths of the Cairngorms. *Xestia alpicola* (Zett.), widespread where dwarf heath overlies boulders; *Anarta melanopa* (Thunb.), widespread on plateau, flying to nectar sources; *Glacies coracina* (Esp.), widespread on plateau and ridges.

BRITISH MICROLEPIDOPTERA

BLAND, K.P. – *Enteucha acetosae* (Staint.), a further specimen reared from Alva Glen, Perthshire (VC87) at what is the second Scottish site. *Ectoedemia angulifasciella* (Staint.) present as vacated mines on *Rosa canina*, collected on 15.x.2005 also from Alva Glen. Apart from an old record from Renfrewshire (VC76), the only recent Scottish records are from East Ross (VC106) and East Sutherland (VC107).

CLANCY, S. – *Olindia schumacherana* (F.) as a second brood individual, bred from *Stachys sylvatica* collected in August 2005 from Cookbury, Devon (VC4). *Cydia amplana* (Hübner) taken in New Forest, Hampshire (VC11) on 17.viii.2005, together with an extreme ab. *portlandica* form of *Eudonia mercurella* (L.) and a specimen of *Dioryctria sylvestrella* (Ratz.) showing further establishment of this species. Also the first British specimen of the pyralid *Sciota rhenella* (Zinck.) (Plate 4, Fig. 11), a male taken at Greatstone, Kent (VC15) on 26.vi.2005. Lastly *Cnaemidiphorus rhododactyla* (D. & S.) taken at Biddenden, Kent (VC15) on 15.vii.2005. Only one recent breeding location is known in Kent.

DEANS, M. – *Cydia amplana* (Hübner), the fourth county record; *Palpita vitrealis* (Rossi), a rare migrant; and *Conobathra tumidana* (D. & S.), the third recent county record, all from Bawdsey Peninsular, East Suffolk (VC25) during 2005.

DICKERSON, B. – Photographs and specimens of the mines of *Phyllonorycter leucographella* (Zell.) on leaves of London Plane (*Platanus × hispanica*). This foodplant was recorded as new by Kevin Royles on 3.x.2005 at Brington and then by the recorder at St Neots, both in Huntingdon (VC31).

DICKSON, R.J. – A number of species taken in South Hampshire (VC11) in 2005, namely: *Cnaemidiphorus rhododactyla* (D. & S.) from Cams Hall; *Pelochrista caecimaculana* (Hübner) from Portchester Common; *Elachista alpinella* Staint. from the Moors, Bishop's Waltham; *Eupoecilia ambiguella* (Hbn.) from Horsea Island; and *Caloptilia populetorum* (Zell.) from Botley Wood.

DOBSON, A.H. – *Triaxomera fulvimitrella* (Sodof.) attracted in large numbers to the clearwing pheromone lure 'myo' on 13.v.2005 at Bramley Frith Wood,

Hampshire (VC12). *Coleophora atriplicis* Metr. and *C. aestuariella* Bradl., both bred from cases collected on Gutner Salt Marsh, Hayling Island (VC11) on 26.ix.2005; and *Dioryctria abietella* (D. & S.) from Headley Gravel Pits Reserve on 4.viii.2005, a new VC12 record.

HALL, N.M. – Species found during July 2005 at Hastings, East Sussex (VC14): *Cochylis molliculana* Zell., *Anania verbascalis* (D. & S.), *Cryptoblabes bistriga* (Haw.), *Apomyelois bistriatella* (Hulst), *Elegia similella* (Zinck.) and a species of *Capperia*. Also shown was *Assara terebrella* (Zinck.), which appeared regularly in the exhibitor's garden in Reading (VC22) during 2005.

HARPER, M.W. – *Denisia albimaculea* (Haw.), a species with very few recent records, from near Newent, Glos. (VC34) in July 2005.

HART, C. – An exhibit of *Stenoptilia annadactyla* Sutter (Plate 4, Fig. 8), a member of the *S. bipunctidactyla* 'group', newly recognised as resident in Britain in the Breck District of East Anglia and possibly other areas. The exhibit displayed a number of differences between *S. annadactyla* and *S. bipunctidactyla* s.s.. The new species normally has three tufts of black scales in the termen of the second forewing lobe, although these may run together so that the fringe is mostly black, whereas *S. bipunctidactyla* has only two small tufts in the termen. In the female genitalia the antrum of *S. annadactyla* is short, wide and straight, whereas that of *S. bipunctidactyla* is relatively long, thin and slightly curved. *S. annadactyla* also appears to prefer Small Scabious (*Scabiosa columbaria*), whereas *S. bipunctidactyla* normally uses other species of scabious. Now that it has been recognised, it will be interesting to see where it occurs in Britain.

HECKFORD, R.J. – *Bryotropha similis* (Staint.), Invernaver, West Sutherland (VC108) 1 & 4.vii.2005, first record from West Sutherland. *Pancalia schwarzella* (F.), Glen Callater, South Aberdeen (VC92), larvae feeding on underside of leaves of *Viola riviniana* 27.vii.2004, moths reared 25 & 26.iii.2005. Possibly this is the first record of larvae being found in the wild either in the British Isles or on the Continent. *Crambus pratella* (L.), Invernaver, West Sutherland (VC108) 4.vii.2005, first record from West Sutherland. *Pyrausta ostrinalis* (Hübner), Shute Shelve Hill, Somerset (VC6), pupa found amongst *Thymus* sp. and a larva feeding on same foodplant 9.vii.2005, moths reared 16.vii.2005 and 24.vii.2005, respectively. Moth also reared 20.vii.2005 from ovum obtained from female caught 29.v.2005 (larva also fed on *Thymus* sp.) at same locality. Possibly this is the first confirmed record of a larva being found in the wild in the British Isles.

HENWOOD, B. – Larvae and cocoons of *Cosmopterix pulchrimella* Chambers on *Parietaria judaica* from Totnes, Devon (VC3) collected on 10.xi.2005; also specimens bred from the first Devon locality at Prawle, where larvae were collected on 28.i.2005. Other Devon (VC3) microlepidoptera were exhibited as follows: *Cydia strobilella* (L.) taken as a presumed migrant at Abbotskerswell on 30.iv.2005 during a period of migrant activity, well away from the foodplant. *Crassa tinctella* (Hübner) from New Bridge on 27.v.2005. *Phycitodes maritima* (Tengstr.), bred from larvae collected from flowers of Ragwort (*Senecio jacobaea*) from Cockington, Abbotskerswell, Torquay and Kingskerswell. There are few previous records for this species from Devon. *Dasystoma salicella* (Hübner) bred from larvae from *Swida sanguinea* from Branscombe collected in June and August 2004. *Cydia amplana* (Hübner) from Abbotskerswell on 31.viii.2005.

HIGGOTT, J.B. – *Phyllocnistis xenia* Her. reared from mines on *Populus alba* at Trimley St. Martin, Suffolk (VC25), as a new county record. *Acleris logiana* (Clerck) from Rushmere St. Andrew. This species is now recorded regularly east of Ipswich and is double-brooded. *Cydia medicaginis* (Kuzn.) from Orford Ness NNR and

C. amplana (Hübner) from Landguard Point and Minsmere, both as first county records for Suffolk. *Haimbachia cicatricella* (Hübner) from Orford Ness in 2004, the first away from the Dungeness area.

KNILL-JONES, S.A. – Various species from the Isle of Wight (VC10), including *Cydia amplana* (Hübner), *Thysanotia chrysonuchella* (Scop.), *Evergestis extimalis* (Scop.) (taken by D.B. Wooldridge) and *Phlyctaenia perlucidalis* (Hübner).

KOLAJ, A. – *Dioryctria sylvestrella* (Ratz.) and *D. schuetzeella* Fuchs, both from the New Forest (VC11) on 9.vii.2005 and *Nephopterix angustella* (Hübner) from Pagham Harbour, Sussex (VC13) on 17.vi.2005.

LANGMAID, J.R. – *Caloptilia falconipennella* (Hübner), one of the summer brood (f. *oneratella* Zell.) bred from larvae collected from *Alnus incana* at Hursley Park, Hampshire (VC11) on 28.v.2005 and one from a pupa on *A. cordata* from Portsmouth on 29.viii.2005, to show the remarkable difference between the broods. An aberrant specimen of *Paraswammerdamia nebulella* (Goeze) from Southsea, with brownish-ochreous colouring replacing the usual grey (plus a normal specimen for comparison). *Elachista adscitella* Staint. bred from larvae collected from *Deschampsia cespitosa* from Talybont, Breconshire (VC42) on 20.v.2005, new to the VC. *Caryocolum kroesmanniella* (H.-S.) bred from larvae on *Stellaria holostea* from Speech House, Glos (VC34), collected on 18.v.2005. *Eucosma parvulana* (Wilk.) from Norton Down, Wilts (VC8) on 13.vii.2005, new to the VC.

MCCORMICK, R.F. – Various species from Scotland and Devon collected in 2005. *Olethreutes schultzeana* (F.) from near Braemar (VC 92) and near Dalwhinnie (VC96); *Crambus pratella* (L.) from near Braemar; *Eudonia alpina* (Curtis) from near Dalwhinnie; and *E. murana* (Curtis) from near Braemar, all in July 2005. *Aplota palpella* (Haw.) from Harcombe Wood near Chudleigh, Devon (VC3) (with R. Heckford); *Donacaula forficella* (Thunb.) from Kingsteignton (VC3) (B. King) and Braunton Burrows (VC4) (S. Hatch); *Evergestis limbata* (L.) from Kingsteignton (B. King) and Teignmouth (VC3) as the second and third records from Devon; *Anania verbascalis* (D. & S.) from Lincombe, near Sidmouth, the first Devon record (I. Lakin); *Anerastia lotella* (Hübner) from Braunton Burrows (R. Coomber); *Conobathra tumidana* (D. & S.) from Crownhill, Plymouth (R. Beswetherick) and Teignmouth, first records from Devon; and *Trachycera marmorea* (Haw.) from Braunton Burrows (S. Hatch). All Devon records were from late June or July.

OWEN, J. – Five species recorded from Dymchurch, Kent (VC15) namely: *Dioryctria schuetzeella* Fuchs, *Plodia interpunctella* (Hübner), *Psammotis pulveralis* (Hübner), *Hypsopygia costalis* (F.) and *Bisigna procerella* (D. & S.).

PORTER, J. – Two species new to Surrey (VC17), *Digitivalva perlepidella* (Staint.) from Oxted on 3.vi.2005 and *Tebenna micalis* (Mann) from Hambledon on 22.vii.2005. The following scarce species in Surrey, *Nemophora cupriacella* (Hübner) from Brook on 22.vii.2005 (R. Palmer); *Phyllonorycter quinquegutella* (Staint.) from Horsell Birch collected as mines on *Salix repens*, *P. scabiosella* (Dougl.) from Addington, bred from *Scabiosa columbaria*, *Yponomeuta rorella* (Hübner) collected by A.R. Mitchell at Weybridge on 12.vii.2005, and *Pelochrista caecimaculana* (Hübner) from Westcott Downs on 2.vii.2005. *Coleophora therinella* (Tengstr.) new to Wiltshire (VC8) from Tilshead on 2.viii.2005 (g. det. R.M. Palmer and J.R. Langmaid). Finally some scarce species from Kent (VC15 and VC16), exhibited for the captor, D.C. Gardner: *Micropterix mansuetella* (Zell.) from Hoad's Wood on 6.v.2005, *Pseudatemelia flavifrontella* (D. & S.) from Rolvenden on 9.vi.2005, *Coleophora ochrea* (Haw.) from Gillingham on 21.vii.2005, and *Eucosma aemulana* (Schlag.) from Mereworth Woods on 2.viii.2005.

SHARPE, P. – *Euchromius cambridgei* (Zell.), new to Britain from Northampton on 17.viii.2005 (Plate 4, Fig. 14) and *Pammene agnotana* Rebel, taken at Collyweston on 30.iv.2005.

SIMS, I. – *Etainia louisella* (Sirc.) bred from larvae from Lower Earley, Reading (VC22), Dinton Pastures, Reading and Hainault Forest, Essex (VC18). Also bred specimens of *Stigmella minusculella* (H.-S.) and *S. aceris* (Frey) from southern England. *Nemophora cupriacella* (Hübner) from near Dinton Pastures, the first recorded in Berkshire since 1900. *Nemapogon granella* (L.) reared from the bracket fungus *Ganoderma adspersum* (Schultz) growing on Bird Cherry (*Prunus padus*) near Marlow, Bucks (VC24), collected 18.iii.2005.

SMITH, E.G. & SMITH, M.H. – *Acrolepiopsis assectella* (Zell.) bred from cultivated leeks at Bullen Hill Farm in 2005, new to Wilts (VC8), *Dichrorampha sedatana* Busck. also new to VC8, from Trowbridge on 3.vi.2005, and *D. sequana* (Hübner) also from Trowbridge on 20.vi.2005. Also leaves of aspen, *Populus tremula* with green islands caused by the presence of larvae of *Ectoedemia argyropeza* (Zell.).

STERLING, P.H. – *Chrysoclista lathamella* Fletcher from Eype's Mouth undercliff, Dorset (VC9), the first VC record since 1950s. *Dichelia histrionana* (Frolich) (Tortricidae) (Plate 4, Fig. 10) new to Britain collected on 8.vi.2003 by M. Ashby from Wood Green, Middlesex (VC21).

THIRLWELL, I.R. – *Caloptilia semifascia* (Haw.) from Portsmouth (VC11) on 23.viii.2005, now common at the site, following the recent planting of its foodplant. *Bactra lacteana* (Carad.), also from Portsmouth on 28.vii.2005, an unexpected site for this scarce species.

WINOKUR, L. – *Calamotropha paludella* (Hübner) from Otmoor RSPB Reserve, Oxon (VC23) on 23.vii.2005.

YOUNG, M.R. – Species from above the tree-line in Scotland: *Ethmia pyrausta* (Pallas) from Glas Maol (VC90), *Olethreutes obsoletana* (Zett.) and *Catoptria furcatellus* (Zett.) from Aberdeenshire (VC92), *Eudonia alpina* (Curtis) from Strathspey (VC96), and *Udea uliginosalis* (Steph.) from Aberdeenshire.

FOREIGN LEPIDOPTERA

DOBSON, A.H. – A selection of moths from Paphos, Cyprus, 7–13.xi.2004: *Herpetogramma licarsisalis* Walk., common, *Euchromius* sp., *Microloxia herbaria* Hübner, *Larentia* sp., near *clavaria* (Haw.), at present unknown, *Utetheisa pulchella* (L.), *Agrotis spinifera* (Hübner), *Xestia xanthographa* (D.&S.), *Spodoptera ciliun* (Gn.), common, *Caradrina syriaca* (Stdgr), *Caradrina* unknown sp., and *Chrysodeixis chalcites* (Esp.).

HALL, N.M. – Moths from Spain and the Canary Islands. Spanish moths were collected with authorizations from the relevant Autonomous regions (País Vasco, Aragón, Cataluña, Castilla y León, Andalucía).

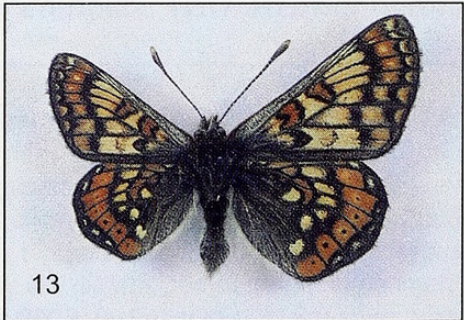
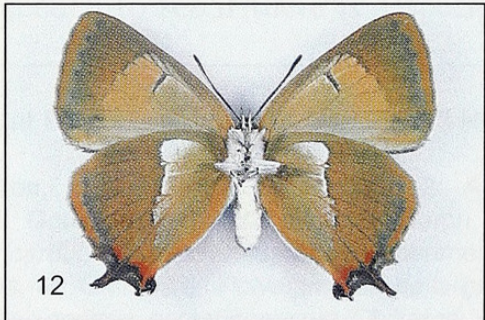
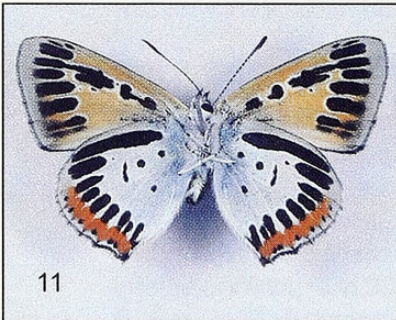
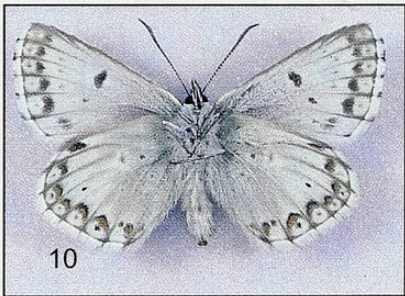
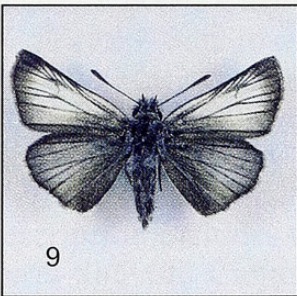
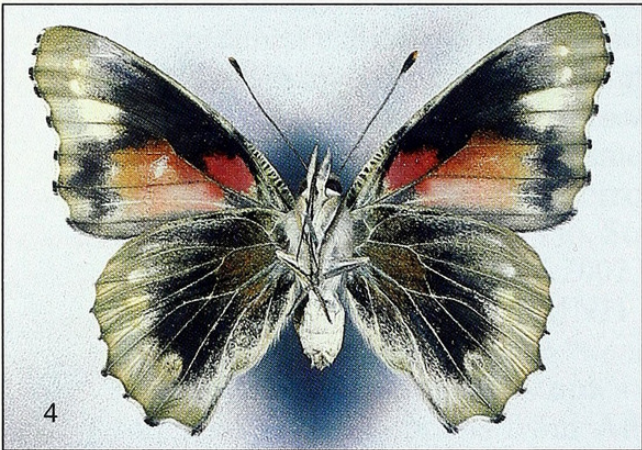
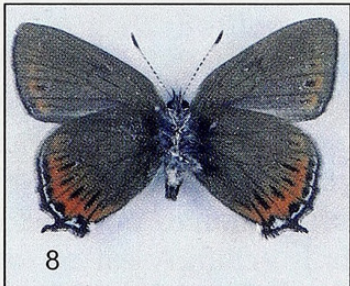
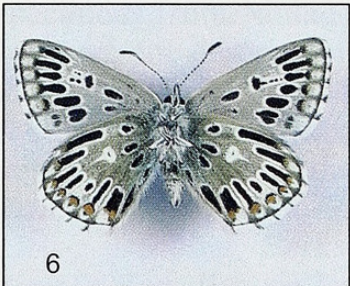
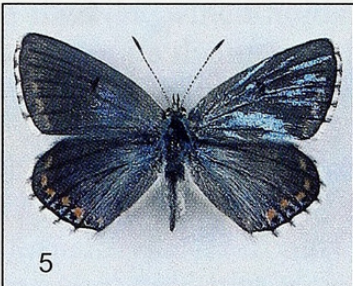
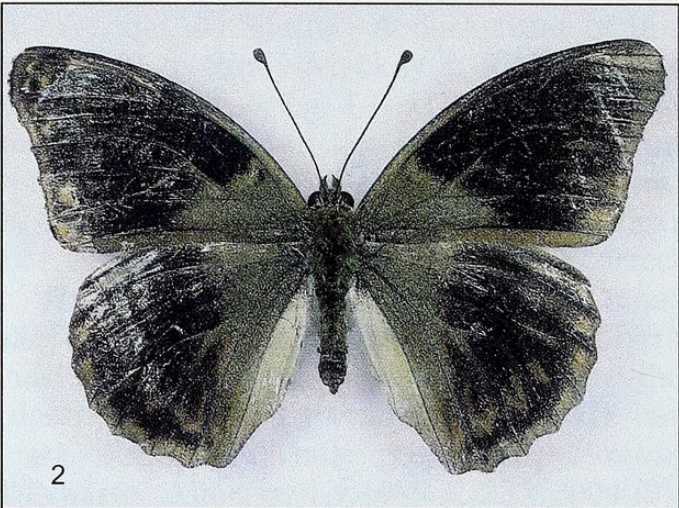
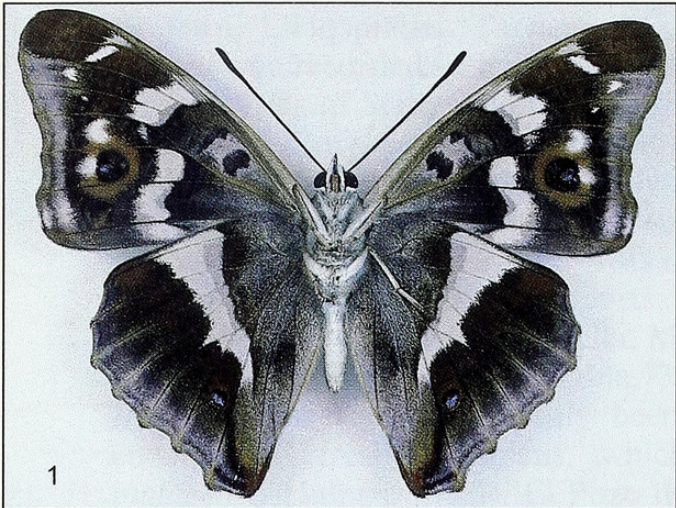
(A) Some microlepidoptera displayed adjacent to magnified images of the same specimens showing the wing markings more clearly: (i) *Agonopterix rutana* F., Dunas de Cabopino, Málaga, 3.vi.2005 (3), 5.vi.2005; (ii) *Blastesthia tessulatana* Stdgr, Dunas de Cabopino, Málaga, 9.vi.2005; (iii) *Ypsolopha* sp., Embalse de Guadalhorce, Málaga, 13.vi.2005; (iv) *Reisserita* sp. & (v) *Mesophleps* sp., both Dunas de Cabopino, Málaga, 10.vi.2005. (vi) *Ethmia lepidella* Chrét., El Pozo del Esparto, Almería, 14.x.2003. (vii) *Cydia strigulatana* Kennel, Pradales, Segovia, 29.v.2005

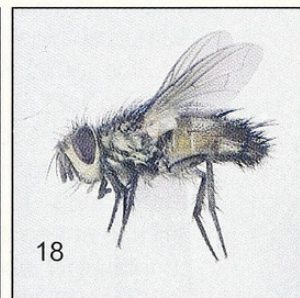
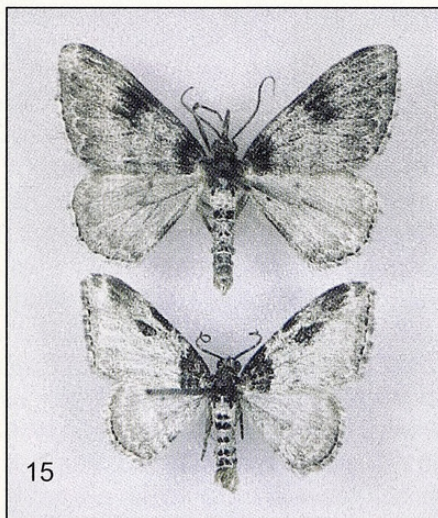
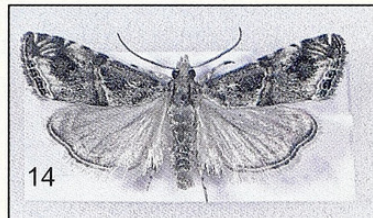
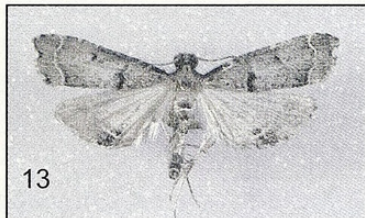
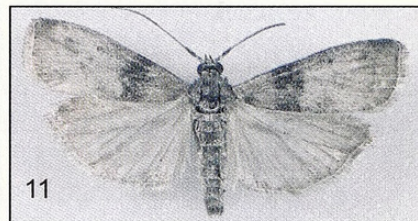
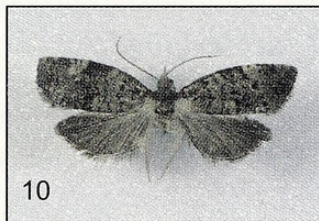
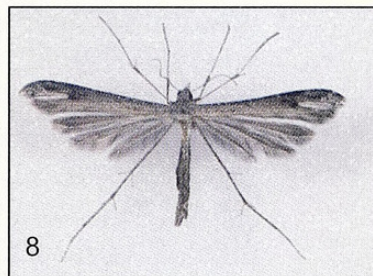
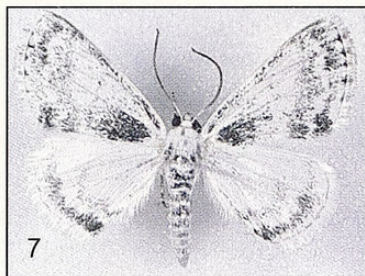
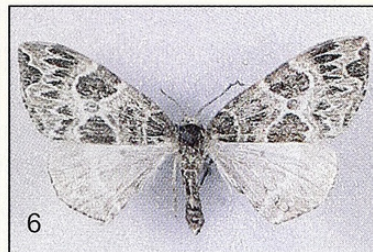
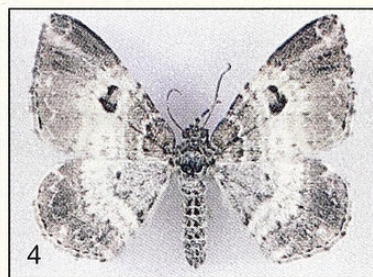
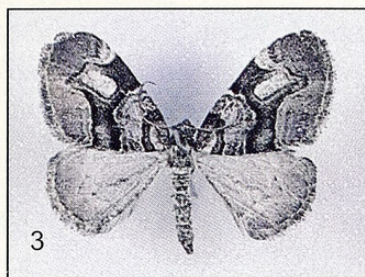
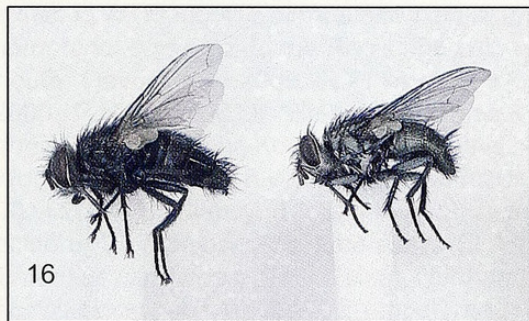
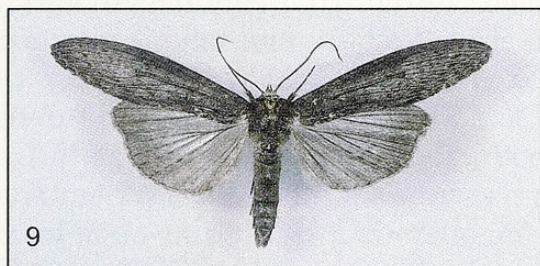
(B) Pyralidae: (i) *Diplopseustis perieresalis* (Walk.) (Spilomelini) (Plate 4, Fig. 13), El Torn, L'Hospitalet, Tarragona, 8.vi.2003. det. M.Shaffer. A dark form of this species was recorded in the British Isles in 2001 by Andy Mackay & Richard Fray [Tresco, Isles of Scilly, 19.x.2001, *Atropos* 16 (2002): 26, fig. 1 (set) & fig. 25 (live)]. Mackay & Fray, considering the importation of plants to the Abbey Gardens on Tresco, thought that it was probably an adventive species rather than an immigrant. The Spanish specimen was a pale form, found among natural vegetation, but near rubbish bins. N.B. 'perieresalis' was incorrectly spelt in *Atropos*, though the correct spelling was used in Internet reports; (ii) *Hypotia delicatalis* Asselbergs 2004, Dunas de Cabopino, 14 km E of Marbella, Málaga, 4.vi.2005 (2), 5.vi.2005, 9.vi.2005. Sierra de la Creu, Vandellós, Tarragona, 3.viii.1999. This pyrale was well-known to the BMNH, but has only recently been described. This is the first year NMH has encountered fresh specimens, which are a beautiful pale green; (iii) *Psorosa malagensis* Hamps. (M/S), El Pozo del Esparto, Almería, 1.v.1999 & 23.v.2004 (3). This is another species known to the BMNH, which holds specimens from Malaga (ex Traugott-Olsen). The raised scales are quite distinctive. However, the description may only exist in manuscript form, so the name may be invalid. (iv) *Pyralis farinalis* L., Dunas de Cabopino, 14 km E of Marbella, Málaga, 3 & 4.vi.2005. Specimens, presumed to be *P. farinalis* from Cabopino had the wing-shape of *farinalis* and the hind-wing pattern of *lienigialis*. *Pyralis lienigialis* Zeller, Uffington, VC22, 11.vii.1986 (ex B. Goater) and *P. farinalis* L., Harcourt Drive, Reading, Berks, 26.vi.2005 were shown for comparison. (v) *Polyocha cremoricosta* Rag. Bco de las Agüillas, Las Negras, P.N. Cabo de Gata, Almería, 7.ix.2002., Cala Bordonares, Mojácar, Almería, 8.ix.2002. (vi) *Anerastia lotella* Hübn., Cala Bordonares, Mojácar, Almería, 8.ix.2002 (2). The identities of the 'cremorica' and 'lotella' need checking. There is a specimen labelled 'cremorica' in the BMNH matching the specimen exhibited, but it is not in the Karsholt & Razowski checklist and may be a synonym. There is no specimen in the BMNH main collection matching the 'lotella' from Almería. (vi) *Cataonia erubescens* Christ. Bco de las Agüillas, Las Negras, P.N. Cabo de Gata, Almería, 27.v.2004, Cala Medio Luna, P.N. Cabo de Gata, Almería, 6.ix.2002 (3), Cerro Colorado, San José, Almería, 1.vi.2000, Jandia, Fuerteventura, 26.xi.–9.xii.1996, Sol Jandía Mar Apartments, Jandia, Fuerteventura, 8.xii.2002, 11.xii.2002, 15.xii.2002. *Cataonia erubescens* is an odontine described from Krasnowodsk. The BMNH does not have any Russian specimens labelled 'erubescens', but it does have 'monocerialis Rag.', which is a synonym according to Karsholt & Razowski. Christoph's description includes the pointed projection on the forehead. The specimens from Almería and the Canary Islands look different, so more work will be needed to see if there is a species complex. (vii) *Mecyna auralis*

PLATE 3. BENHS Annual Exhibition, Imperial College, 12 November 2005

1: *Apatura iris*, aberration, bred vii.2005, L. Winokur. 2: *Argynnis paphia*, ab. *nigricans*, Surrey, 20.vii.2005, A. Jones. 3: *Gonepteryx rhamni*, gynandromorph, Lullington Heath, Sussex, 28.viii.2005, D. Burrows. 4: *Vanessa cardui*, melanic, temperature experiment, K. Bailey. 5: *Polyommatus bellargus*, intersex, Wilts., 2.vi.2004, M. Callow. 6: *Polyommatus bellargus*, ab. *striata*, temperature experiment, R. Revels. 7: *Polyommatus coridon*, somatic mosaic, Chilterns, viii.2002, B. Fensome. 8: *Satyrrium pruni*, ab. *alboboleta*, temperature experiment, A. Butler. 9: *Thymelicus sylvestris*, aberration, Northants., vii.2005, P. Tebbutt. 10: *Polyommatus coridon*, ab. *alba*, Dorset, viii.2005, S. Rook. 11: *Lycaena dispar batavus*, aberration, bred 2005, R. Revels. 12: *Thecla betulae*, ab. *unistrigata*, temperature experiment, P. Tebbutt. 13: *Euphydryas aurinea*, gynandromorph, K. Bailey.

Photographs by R.A. Jones. All illustrations are life size.





H. de Peyerimhoff, Puerto de la Mora, Granada, 12.vii.1991 & 4.vii.1994 (3). (viii) *Mecyna flavalis* D. *Mecyna* sp. Puente Ventilla, Ronda, Málaga, 16.ix.2004 (2), 2.vi.2005, 8.vi.2005. There are difficulties distinguishing the Spanish *Mecyna* species. The *Mecyna* sp from Málaga (Ronda) need further examination. (ix) *Pempelia geminella* Eversm., Serrania de Ronda, N of Alpandeire, Málaga, 6.vi.2005, 12.vi.2005. (x) *Eudonia* sp., Corralejo Gardens Apartments, Fuerteventura, 9.xii.2001, Los Carmenes Apts, Costa Teguis, Lanzarote, 1.xii.2003, 4.xii.2003, Oliva Beach Apts, Corralejo, Fuerteventura, 5–18.ii.1997, 11–31.iii.1998, 29.xi.2000, 8.xii.2000. [These were thought at the time of the exhibition to be *E. parviangusta* Nuss, Karsholt & Meyer, but since the exhibition, 'Microlepidoptera of Europe' Volume 5 (Apollo Books), including Scopariinae by Matthias Nuss, has been published. According to Nuss, *E. parviangusta* occurs on Gran Canaria, but not on Lanzarote or Fuerteventura, and flies in October. They may have been *E. lineola dorada* Nuss, Karsholt & Meyer, which is small with narrow forewings, occurs in Fuerteventura and Lanzarote, and flies from December to May. (xi) *Mnesixena* sp., Vista Dunas, Maspalomas, Gran Canaria, 11.iii.2001. For comparison *Mnesixena pectinalis* H.-S., Oliva Beach Apts, Corralejo, Fuerteventura, 28.iv.2002. The *Mnesixena* sp. (Hypotiini) is unknown to the BMNH (M. Shaffer). *M. pectinalis* is the only member of the genus known to occur on the Canary Isles.

(C) Macrolepidoptera: (i) *Agrotis cinerea* D. & S., Prádena, Segovia, 30.v.2005 (5). All five were similar and unlike British *cinerea*. (ii) *Hadula gredosi* Laever, Embalse de las Cogotas, Avila, 7.vi.2004, 13.ix.2004 (2). La Portina, Talavera, Toledo, 8.v.1996. The wing pattern is more like *Cardepija sociabilis* Grasl. than *Hadula trifolii* Hufn. (iii) *Mythimna languida* Walk., Bco de las Agüillas, Las Negras, P.N. Cabo de Gata, Almería, 27.v.2004. This species is a recent arrival in Spain. NMH first became aware of it in ix.2005 at Cabopino in Málaga, but had unknowingly taken this species in v.2005 in Almería. (iv) *Agrochola lychnidis* D. & S., 6 km N Fuentes de Ropel, (Dehesa de Rubiales), Benavente, Zamora, 23.x.2003 (6). (v) *Conistra rubiginea* D. & S., Raissac sur Lampy, Aude, France, 2.x.2003. (vi) *Conistra staudingeri* Grasl., bred specimens, emerging 5–28.xi.2005. ex female (18.v.2004), Parque Provincial Garaio, Alava. *C. rubiginea* and *C. staudingeri* are closely related

PLATE 4. BENHS Annual Exhibition, Imperial College, 12 November 2005

1. *Hyphoraia testudinaria* (life size), Chichester, W. Sussex, 30.v.2005, Sarah Patton. 2. *Hepialus humuli* (life size), Slough, Berks., 1.vi.2005, R. Hayward. 3. *Anticlea derivata*, Ashwell, Herts., iv.2005, coll. V. Judd, exhib. C.W. Plant. 4. *Epirrhoe alternata alternata*, Tavistock, Devon, 16.viii.2005, R.F. McCormick. 5. *Lampropteryx otregiata*, Lyme Regis, Dorset, 15.viii.2005, R.F. McCormick. 6. *Ecliptopera silaceata*, Teignmouth, Devon, 26.v.2005, R.F. McCormick. 7. *Lomographa temerata*, West Bexington, Dorset, 20.ix.2005, P.H. Sterling. 8. *Stenoptilia annadactyla*, Breck District, Norfolk, C. Hart. 9. *Lophoptera longipennis* (life size), Hong Kong New Territories, 13.iv.2001, M. Sterling. 10. *Dichelia histrionana* (2 × life size), Wood Green, Middx, 8.vi.2003, coll. M. Ashby, exhib. P.H. Sterling. 11. *Sciota rhenella*, Greatstone, Kent, 20.vi.2005, S. Clancy. 12. *Xanthorhoe montanata*, Cliffs of Magho, Co. Fermanagh, 20.vi.2004, R.J. Heckford. 13. *Diplopeustis perieresalis*, El Torn, L'Hospitalet, Tarragona, Spain, 8.vi.2003, N.M. Hall. 14. *Euchromius cambridgei* (2 × life size), Northampton, 17.viii.2005, P. Sharpe. 15. *Xanthorhoe fluctuata*, Tile Hill, Warwickshire, 10.vii.2005 (upper) and Tile Hill, Warwickshire, 10.ix.2005 (lower), A. Kolaj. 16: *Townsendiellomyia nidicola* (2 × life size), male (left), Durlston Country Park, Dorset, 3.viii.2005 and female (right), Cheyne Weare, Dorset, 1.viii.2005, I. Perry. 17: *Tephritis divisa* (3 × life size), Bognor Regis, W. Sussex, 13.viii.2005, P.J. Hodge. 18: *Frontina laeta* (2 × life size), Stoborough, Dorset, 3.viii.2005, I. Perry. 19: *Myopa occulta* (3 × life size), RHS Garden, Wisley, Surrey, 16.viii.2005, A.J. Halstead.

Photographs by R.A. Jones. All illustrations are 1.5 times life size unless otherwise stated.

and have similar larvae with long hairs. (vii) *Cryphia ereptricula* Treit. or ?*Cryphia ravula* Hb. ssp. *ereptriculoides* Bours., Bco de las Agüillas, Las Negras, P.N. Cabo de Gata, Almería, 2.vi.2000, Dunas de Cabopino, 14 km E of Marbella, Málaga, 3.vi.2005.

(D) Species seen in the Serranía de Ronda. The Serranía de Ronda has some good natural karst areas adjacent to disturbed land (old cultivation terraces). One surprise was that a trap set on the karst, which is treeless, though it has stunted shrubs, produced three species of catocalids, whereas the disturbed land with bushes produced none. (Traps were run close together on the same night). (i) *Catocala sponsa* L., Serranía de Ronda, N of Alpandeire, Málaga, 12.vi.2005. (ii) *Catocala nymphagoga* Esp., Puente Ventilla, Ronda, Málaga, 8.vi.2005. (iii) *Catocala conversa* Esp., Serranía de Ronda, N of Alpandeire, Málaga, 12.vi.2005. (iv) *Calophasia hamifera* Stdgr, Cala Bordonares, Mojácar, Almería, 22.v.2004., Serranía de Ronda, N of Alpandeire, Málaga, 12.vi.2005. (v) *Macaria artesiaria* D. & S., Serranía de Ronda, N of Alpandeire, Málaga, 6.vi.2005, St Gilles, Vendée, France, 13.vi.1984. Two very different forms. (vi) *Hecatera cappa* Hb., Serranía de Ronda, N of Alpandeire, Málaga, 6.vi.2005.

(E) Bred from Spain. *Idaea manicaria* H.-S., Puente Ventilla, Ronda, Málaga, 2 & 3.vi.2004. specimens emerging 4–21.vi.2005 ex females (16.ix.2004) and wild-caught spring generation females.

(F) Bred by accident (serendipity) from Spain. (i) *Leptotes pirithous* L., em. 28.x.2004. (ii) *Eublemma cochylionides* Guen., em. 16.ii.2005. (iii) *Eublemma parva* Hb., em. 12.xi.2004. Raising larvae in the UK, NMH sometimes finds that he has introduced other larvae unintentionally with the foodplant and ends up with adults of, for example, *Gymnoscelis rufifasciata* Haw., *Epiphyas postvittana* Walk. or *Cacoecimorpha pronubana* Hübn., which are not very exciting. The specimens displayed were obtained while raising *Idaea* larvae from Spain. These are far more exciting, but since new foodplant was added every few days in Spain when moving from site to site there was no way of knowing exactly where they came from (though in each case it was almost certainly somewhere in the Málaga province of Spain). With the *Leptotes* NMH was of course soon aware that he had introduced another species because lycaenid larvae are distinctive. He was therefore able to isolate it and breed it through, being curious to find out what it was. But with each *Eublemma* he was unaware that he was breeding anything other than *Idaea*, and their emergence was a surprise. If they need special conditions and food they had been provided purely by accident.

(G) Bred from the Canary Islands: (i) *Cornutiplusia circumflexa* L., emerging 27–29.v.2005, ex female (12.iv.2005) Rio Club II Apts., Maspalomas, Gran Canaria. (ii) *Spodoptera littoralis* Boisd., emerging 11.v.2005, ex larva (on *Ricinus* 16.iv.2005), Maspalomas, Gran Canaria.

HARMER, A.S. – (A) A selection of butterflies collected in the Medelpad, Ångermanland, Norrbotten, Lule Lappmark and Torne Lappmark regions of Sweden, and the Troms region of Norway in vi & vii.2004. *Artogeia napi adalwinda* Fruhst, Green-veined White; *A. napi bicolorata* Bj. Pet. Green-veined White; *Colias nastes werdandi* (Zett.), Pale Arctic Clouded Yellow; *C. palaeno lapponica* Stdgr, Moorland Clouded Yellow; *C. hecla sulitelma* (Aurivillius), Northern Clouded Yellow; *Leptidea sinapis* (L.), Wood White; *Lycaena phlaeas polaris* Courv., Small Copper; *Heodes virgaureae* (L.), Scarce Copper; *Vacciniina optilete cyparissus*, Cranberry Blue; *Plebejus idas* (L.), Idas Blue; *P. idas lapponica* Gerh.; *Eumedonia eumedon borealis* Wahlgren, Geranium Argus; *Cyaniris semiargus* (Rott.), Mazarine Blue; *Agrodiaetus amanda* (Schneider), Amanda's Blue; *A. amanda* f. *isias*

Fruhstorfer; *Polyommatus icarus septentrionalis* Fuchs, Common Blue; *Limenitis populi* (L.), Poplar Admiral; *Aglais urticae polaris* (Stdgr), Small Tortoiseshell; *Boloria ino sigurd* Higgins, Lesser Marbled Fritillary; *Proclossiana eunomia ossianus*, Bog Fritillary; *P. eunomia montana* Bj. Pet.; *Boloria aquilonaris scandinavica* Bj. Pet., Cranberry Fritillary; *Clossiana euphrosyne lapponica* Esp., Pearl-bordered Fritillary; *C. selene hela* Stdgr, Small Pearl-bordered Fritillary; *C. chariclea* (Schneider), Arctic Fritillary; *C. freija* (Thunb.), Freija's Fritillary; *C. frigga* (Thunb.), Frigga's Fritillary; *Mellicta athalia* (Rott.), Heath Fritillary; *Oensis bore* (Schneider), Arctic Grayling; *O. jutta* (Hübner), Baltic Grayling; *Erebia ligea* (L.), Arran Brown; *E. embla* (Thunb.), Lapland Ringlet; *E. pandrose* (Borkh.), Dewy Ringlet; *Aphantopus hyperantus* (L.), Ringlet; *Pyrgus andromedae* (Wall.), Alpine Grizzled Skipper; *P. centaureae* (Ramb.), Northern Grizzled Skipper.

(B) A bred series of Swedish Green-veined Whites *Artogeia napi* ssp. *adalwinda* Fruhst. from Abisko, Torne Lappmark, and *A. napi bicolorata* Bj. Pet. from Puoltikasvaara, Lule Lappmark. These two subspecies are comparable to *A. napi bryoniae* Hübner from the Alps. Despite being reared on the South Coast of England, the F₁ and F₂ generations have remained univoltine, with the exception of two males which emerged on 2.x.2005 (*bicolorata*) and 7.xi.2005 (*adalwinda*).

PLANT, C.W.—Some Lepidoptera from Hungary and Slovakia, viii. 2004 and v.2005.

From 10–20.viii.2004, Colin Plant, Marcel Ashby and Les Hill collected Lepidoptera on sites in Slovakia and Hungary. They visited seven sites and recorded 526 moth species (macros and pyralids). Six of the sites were visited again from 23–30.v.2005 by Colin Plant, Rachel Terry and Duncan Fraser. Though the list from the 2005 visit is not complete, they know they have added at least another hundred species. Permits were arranged for the restricted sites with the help of Szabóky Csaba in Hungary and Frantisek Slamka in Slovakia. Some of the species captured in 2004 were exhibited last year, so only a small selection of additional species was shown this time. The sites and dates were (A) In Slovakia. Site 1: Mikulášov (Malacky District, Bratislavský Kraj County). A sandy forest ride. *Pinus* plantation with deciduous trees along rides, military training area, 48.33.37°N: 17.13.14°E. Site 2: Luká (Piešťany, Trnavský Kraj). Mixed conifer and broad-leaved deciduous woodland with derelict dolomite quarry, calcareous grassland and ruderal areas, 48.39.24°N: 17.53.47°E. Site 3: Valley above Rajecká Lesná, (Žilina, Žilinský Kraj). Grassy ski slope amongst mixed woodland on the northern slope of Grúň (mountain) at 650m, 49.01.08 N: 18.41.37 E. Site 4: Priesmyk Branisko, near Pol'anovce (Levoča, Prešovský Kraj). Mixed deciduous and conifer woodland along a barely used track to the summit of Priesmyk Branisko, between S-bends of Road 18 at 692m, 49.00.51°N: 20.51.05°E. (B) In Hungary. Site 5: Senyő Valley, Zempleni hegység (Borsod). At edge of mature *Fagus* woodland, with *Quercus petraea*, *Pinus*, and other species at 450m, 48.27.00°N: 21.24.18°E. Site 6: Sirok (Heves). *Quercus petraea*-dominated deciduous woodland around a marshy area with *Salix* and *Sphagnum*. 47.55.44°N: 20.11.12°E. Site 7: Sár hegy, near Gyöngyös (Heves). A dry, steeply sloping volcanic hillside with xerophilic vegetation at 510m, 47.47.43°N: 19.58.22°E. This 'phenomenal' site produced an estimated ten thousand macro moths to three lights (a vertical sheet and two Skinner-pattern traps) on the night of 30.v.2005, just as the party was racing around trying to pack up at 2.30am ahead of a 'serious' thunderstorm. Geometridae: (i) *Thetidea smaragdaria smaragdaria* (F.), Site 6, a non-British subspecies. (ii) *Cyclophora porata* (L.), Site 7, 20.viii.2004. (iii) *Cyclophora albiocellaria* (Hübner), Site 7, 20.viii.2004. (iv) *Idaea elongaria* (Rarab.), ssp. *pecharia* Stdgr, an endemic subspecies, Site 7, 20.viii.2004. (v) *Scotopteryx*

bipunctaria ssp. *bipunctaria* D. & S., Site 2, 11.viii.2004. A non-British subspecies. (vi) *Xanthorhoe biriviata* (Borkh.), Site 1, 10.viii.2004. (vii) *Eustroma reticulatum* (D. & S.), Site 5, 18.viii.2004. (viii) *Melanthia procellata* (D. & S.), Site 2, 11.viii.2004. (ix) *Pareulype berberata* (D. & S.), Site 2, 11.viii.2004. Very common. (x) *Tephрина arenacearia* (D. & S.), Site 4, 15.viii.2004. (xi) *Ascotis selenaria* (D. & S.), Site 6, 19.viii.2004. (xii) *Pungeleria capreolaria* (D. & S.), Site 4, 15.viii.2004. (xiii) *Epione vespertaria* (L.), Site 2, 12.viii.2004. (xiv) *Macaria wauaria* (L.), Site 3, 13.viii.2004. Crambidae: (xv) *Euchromius bella* (Hübner), Site 7, 20.viii.2004. (xvi) *Crambus ericella* (Hübner), Site 1, 23.v.2005. (xvii) *Pediasia fascelinella* (Hübner), Site 1. (xviii) *Platytes alpinella* (Hübner), Site 1. Pyralidae: (xix) *Mecyna trinalis* (D. & S.), Site 2. (xx) *Diasemia reticularis* (L.), Site 6. (xxi) *Actenia brunnealis* (Tr.), Site 2, 11.viii.2004. (xxii) *Herculia rubidalis* (D. & S.), Site 6, 19.viii.2004. (xxiii) *Eurhodope rosella* (Scop.), Site 2, 11.viii.2004. Phycitidae: (xxiv) *Anerastia lotella* (Hübner), Site 1, 10.viii.2004. Noctuidae: (xxv) *Cucullia xeranthemi* Boisduval, Site 7, 30.v.2005. (xxvi) *Cucullia luciphaga* (D. & S.) Site 4, 15.viii.2004. (xxvii) *Cucullia lactucae* (D. & S.), Site 4, 15.viii.2004. (xxviii) *Cucullia campanulae* Freyer, Site 2, 26.v.2005. (xxix) *Cucullia umbratica* (L.), Site 7, 30.v.2005. (xxx) *Cucullia tanaceti* (D. & S.), Site 7, 30.v.2005. (xxxi) *Cucullia dracunculi* (Hübner), Site 7, 20.viii.2004. (xxxii) *Callierges ramosa* (Esp.), Site 4, 28.v.2005. (xxxiii) *Acronicta cuspidis* (Hb.), Site 1, 23.v.2005. (xxxiv) *Pyrrhia purpurina* (Esp.), Site 7, 30.v.2005.

SIMPSON, M. – European Butterflies. A small collection of butterflies from Iran, Turkey, Lebanon, Sweden and Austria. Mostly taken by Lionel Higgins, coming from the collection of the late Sir John Dacie. These were presented to the Simpson Collection of Entomological Memorabilia by Lady Dacie in 2005.

STERLING, M.J. – Lepidoptera of Hong Kong, taken or determined in 2005. (1) Noctuidae: *Antirisuloides catocalina* (Moore), one of five Hong Kong records, listed from China and Indonesia; *Erebus caprimulgus* (F.) (Catocalinae), one of only two Hong Kong records. A variable species which is also recorded from India, Burma, Malaysia and Taiwan; *Stenhyphen costalis* Wileman & South (Herminiinae), the only Hong Kong record MJS can find for this species. Also recorded from Taiwan; *Oraesia argyrosigna* Moore (Calpinae), only four Hong Kong specimens, all from a single locality. Also known from Sri Lanka, mainland China and New Caledonia; *Lophoptera longipennis* (Moore) (Stictopterinae) (Plate 4, Fig. 9). Maybe the only record for Hong Kong. The stictopterines are generally taken to be good primary woodland indicators. Much of Hong Kong's woodland was felled during the Japanese occupation and the stictopterines are poorly represented; *Mythimna taiwana* (Wileman) (Hadeninae). Also recorded from Taiwan. This species was shown at last year's exhibition as *Mythimna* sp. nr. *decisissima*; *Leucania substriata* Yoshimatsu (Hadeninae), recorded recently from Taiwan. This specimen was also shown last year as a tentative *Mythimna polysticha* Turner, with the strong caveat that *polysticha* is an Australian species and the record was somewhat unlikely; *Nonagria* (?) *grisescens* (Hadeninae). The scarcer of the two species of *Nonagria* that occur in Hong Kong. The determination of the Chinese *Nonagria* is problematic; *Tiracola aureata* Holloway and *T. plagiata* Walk. (Hadeninae). There is great confusion between these two. *Tiracola aureata*, the common species in Hong Kong, is larger and more well marked than *T. plagiata*. MJS's record of *plagiata* may be the first for Hong Kong. (2) Geometridae: *Eupithecia melanolopha* Swinhoe, also known from Taiwan and Indonesia. Four other records have been found for Hong Kong. Pugs are fairly diverse in Hong Kong though the genus *Eupithecia* is poorly represented; *Achrosis rosearia* (Leech) (Geometrinae), known from only one locality in Hong Kong where about six specimens have been seen. Also recorded from

mainland China; (3) Notodontidae: *Allata costalis* Moore, a common species in Hong Kong but almost invariably worn. This was the first specimen MJS has taken in good condition; (4) Sphingidae: *Macroglossum mediovitta* Roths. & Jordan. There are 17 species of *Macroglossum* recorded from Hong Kong of which this is one of the largest and most spectacular. There are about five other records; (5) Saturnidae: *Actias heterogyna* Mell., the South China Moon Moth, known only from South China; (6) Limacodidae: *Narosa ochracea* Hering, a common species in Hong Kong but only identified as a Hong Kong species this year. Also recorded from China, Himalaya, South East Asia, Peninsular Malaysia and (?) Sumatra; (7) Tortricidae (Eucosminae): *Megaherpystis melanoneura* Meyrick, known from China, South Korea, Japan and India. The semi-hyaline hindwings of this species are unmistakable; (8) Xyloryctidae: *Metathrinca* sp. nr. *iridostoma* Diakanoff. The species exhibited was very close to *iridostoma*, which is described from and may be endemic to the Philippines, but its palps were a different colour. (9) Lyonetidae: *Proleucoptera* sp. nr. *smilactis* Kuroko. Both the exhibited species and *smilactis* feed on *Smilax china*. *P. smilactis* is described from Japan. The Hong Kong species has an apical hook in the forewing whereas the Japan species does not and is therefore a different species; (10) Gracillariidae: *Acrocercops* sp. nr. *labyrinthica* Meyrick. The larva of the exhibited species and *labyrinthica* both mine *Trema orientalis*. The life history of the latter was described by Kuroko in 1964. The frass in the mine of the Hong Kong species forms a broad blackish blotch whereas in the mines figured by Kuroko the frass is collected in two neat lines.

TERRY, R. – A very interesting selection of unidentified European moths.

They were from the UK (an unidentified epermeniid from Greenford, Middlesex, taken by D. Howdon), Hungary & Slovakia (accompanying C. W. Plant in 2005 q.v. above), France (Tarn & Landes) and Spain (Picos de Europa). (Hopefully those identified will be re-exhibited in 2006. Ed.)

WARING, P. – *Catocala atocala* Brou. At the BENHS annual exhibition in 2004 PW exhibited a selection of North American *Catocala* species seen on an expedition to Kentucky in vii & viii.2004, but some the species had yet to be finally identified. One of these proved to be *Catocala atocala* Brou. The specimen was collected in Hickman County on 4.viii.2004, when PW and members of the Society of Kentucky Lepidopterists (SKL) set up traps in light woodland along the bluff tops of the Mississippi river. This had evidently been logged for timber and firewood, probably many times, and the undergrowth was dense. The precipitous soft-rock cliffs that led down to the floodplain area of the river had much semi-natural vegetation. *Catocala atocala* was at first thought to be new to Kentucky, but a member of the SKL, Leroy Koehn, had unknowingly collected a specimen in Paducah, McCracken County on 8.ix.2001, which is now confirmed as the first Kentucky record. *C. atocala* has distinctive whitish areas in the central part of the forewing by the trailing edge, but was not illustrated in 'Field Guide to the Moths of Eastern North America' (Covell, 1984) nor in 'Legion of the Night – The Underwing Moths', Sargent (1976), and was determined initially from Internet sources. It would appear that an overlooked resident population has been discovered, whilst it might have been considered a vagrant on the basis of LK's singleton.

DIPTERA

BLAND, K.P. – *Cornutrypeta spinifrons* (Schroeder) (Tephritidae), new to Scotland. Occupied leaf mines were collected on 8.ix.2004 and the fly emerged on 25.iv.2005; hitherto only scattered records in southern England.

BOWDREY, J. – (1) *Triglyphus primus* Loew (Syrphidae), reared from a gall of the aphid *Cryptospilum artemisiae* Buckton on *Artemisia vulgaris*, found by J. Firmin, 14.vi.2005 at Gosbecks Archaeological Park (TL9622), Colchester, N. Essex, VC 19. The larvae left the gall, pupating in the sides of the container and the first adult emerged on 30.vi.2005.

(2) *Leopoldius signatus* (Wied.) (Conopidae), Colchester, N. Essex, VC19, 5.x.2005, male taken at ivy *Hedera helix* flowers in old garden in the company of *Vespula vulgaris*, its presumed host.

DICKSON, R.J. – Some Diptera found in S. Hants (VC11) in 2005: *Tanyptera nigricornis* (Mg.) (Tipulidae), in Malaise trap, Botley Wood (SU5510), 1 female, 3–4.vi and 1 female 25.v; *Thereva fulva* (Mg.) (Therevidae), 24 males, Portchester Common SSSI (SU6206), 24.vi; *Leopoldius signatus* (Wied.), at ivy *Hedera helix* blossom, Warnash shore (SU4905), 29.v; *Xyphosia miliaria* (Schrank) (Tephritidae), one female at mv light, Titchfield Haven NNR (SU5302), 26.viii; *Lipoptena cervi* (L.) (Hippoboscidae), at mv light in Botley Wood (SU5510), 23.ix and at Wickham Common (SU5810), 14.x; *Musca autumnalis* De Geer (Muscidae), at mv light, The Moors, Bishop's Waltham (SU5516), 9.ix; *Tachina grossa* L. (Tachinidae), Malaise trap in Botley Wood (SU5410), 29–30.vi;.

HALSTEAD, A.J. – Some local Diptera recorded in 2005: *Limonia nigropunctata* (Schumm.) (Limoniidae), Nower Wood SSSI (TQ195548), Surrey, one female, 8.v; *Rhagio tringarius* (L.) (Rhagionidae), allotments at Brookwood, Surrey, female on runner bean leaf, 26.vi, with the abdominal spots missing; *Vanoyia tenuicornis* (Macq.) (Stratiomyidae), Castor Hanglands (TF119016), Cambs, female, 4.vi; *Dolichopus brevipennis* Mg. (Dolichopodidae), the Gauldrons, Machrihanish (NR628206), Kintyre, Argyllshire, male, 20.vi; *Eristalis rupium* F. (Syrphidae), Scar Close NNR (SD749775), near Ingleborough, N.W. Yorks, female, 27.vii; *Myopa occulta* Wied. (Conopidae) (Plate 4, Fig. 19), RHS Garden (TQ064583), Wisley, Surrey, 16.viii, female on *Eryngium planum* flowers; *Goniglossum wiedemanni* (Mg.) (Tephritidae), Barnack Hills & Holes NNR (TF075047), Cambs, female, 4.vi; *Tephritis matricariae* (Loew) (Tephritidae), Horsell Common (SU986599), 24.iv and Betchworth Lime Works (TQ206514), Surrey, 7.v; *Ceratinostoma ostiorum* (Hal.) (Scathophagidae), Westport Dunes (NR655261), Kintyre, Argyllshire, 17.vi; *Cylindromyia interrupta* (Mg.) (Tachinidae), Horsell Birch (SU988597), near Woking, Surrey, female, 25.vi; *Phasia barbifrons* (Girschner) (Tachinidae), RHS Garden (TQ064583), Wisley, Surrey, 12.viii, both sexes on *Eryngium planum* flowers.

HODGE, P.J. – Two species of Tephritidae found in Sussex during 2005, one of them new to the British Isles list: *Campiglossa malaris* Séguy, Kidbrook Meadow, Forest Row, E. Sussex, TQ410339, several swept off hoary ragwort *Senecio erucifolius*, 26.vii, until recently recorded in the British Isles only from E. Kent; *Tephritis divisa* Rondani (Plate 4, Fig. 17), a south European species not previously recorded from the British Isles, from the Brooks, North Bersted, near Bognor Regis, W. Sussex, SZ987013; Railway Land LNR, Lewes, E. Sussex, TQ421099, 13.ix and TQ420100, 20.ix; Pannel Valley Nature Reserve, Icklesham, E. Sussex, TQ888155, 10.x, all swept off flowering plants of bristly ox-tongue *Picris echioides*.

ISMAY, J.W. & SCHULTEN, B. – Uncommon or interesting Diptera recorded in recent years, including many from Salisbury Plain Training Area, Wilts (VC8), given below as 'Salisbury Plain (grid reference)' only: *Lonchoptera scutellata* Stein (Lonchopteridae), Jones's Mill, Wilts, 31.v.2004 and Stanwell, Surrey, 30.viii.2002, associated with sedges at water margins, in fens and in damp woods more often found by suction sampling; *Cistogaster globosa* (F.) (Tachinidae), recorded from several sites in Wilts and seven specimens in Malaise trap at Isleworth, Middx, VC21,

TQ17, 13–22.vi.2005—a common factor was dry conditions (chalk grassland, dry grassland, Brownfield sites) and its European host *Aelia acuminata* was found with it at one site; *Stenomicroa delicata* (Collin) (Stenomicroidae), Jones's Mill, 31.v.2004, five specimens, also found by the exhibitors in Oxon and Notts, most frequently by suction sampling large *Carex* tussocks in fenland; *Symphoromyia immaculata* Meigen (Rhagionidae), from an area of tall chalk grassland, Salisbury Plain (ST94), 29.vi.2003, four specimens in soft sweep, a fly of chalk and magnesian limestone grassland; *Terellia vectensis* (Collin) (Tephritidae), recorded from several sites on Salisbury Plain (ST94), 29.vi.2003, its larvae attacking the capitulum of *Serratula tinctoria*; *Urophora spoliata* (Haliday) (Tephritidae), as previous species, 23.vi.2003, three specimens, soft sweep, J.W. Ismay and 3.vii.2003, one specimen, hard sweep, B. Schulten, larvae also develop in seedheads of *Serratula tinctoria*; *Chaetorellia loricata* (Rondani) (Tephritidae), several sites on Salisbury Plain (ST95), 30.v.2003, larvae in capitulum of *Centaurea scabiosa*; *Tephritis matricariae* (Loew) (Tephritidae), a recent addition to the British list from Kent and south Essex, from two sites in Kent (VC16), Dartford, 2.viii.2004, one specimen swept and Dartford Marsh, 13.viii.2005, 2 specimens leg. M. Townsend, reared in Britain from *Crepis vesicaria* and *Crepis capillaris*; *Ulidia erythrophthalma* Meig. (Ulidiidae), recently found at only two sites in Britain, from Cambs and the specimens exhibited from Salisbury Plain (ST95), 4.vii.2003, leg. B. Woodcock and B. Schulten; *Philygria semialata* (Collin) (Ephydriidae), a short-winged species widespread on Salisbury Plain (ST94 and SU04), 6–9.ix.2003, leg. B. Woodcock and has also been found in dry habitats in East Anglia; *Eriolus gracilior* (de Meijere) (Chloropidae), usually recorded from wetlands dominated by *Carex*, apparently a new county record from Smallbrook Meadows, Wilts, 1.vi.2004, four specimens swept; *Incertella scotica* (Collin) (Chloropidae), originally described from Scotland, this species has now been found at several sites in England, but this appears to be a new county record from Smallbrook Meadows, Wilts, 1.vi.2004, five specimens swept; *Stilpon nubilus* Collin (Hybotidae), Salisbury Plain (ST95), 4.vii.2003, two specimens leg. B. Woodcock, a tiny, short-winged fly widespread on Salisbury Plain, taken by Vortis or suction sampling from very short chalk grassland at many sites; *Neria ephippium* (F.) (Micropezidae), a very local species found in damp meadows in England, one specimen swept from *Deschampsia* at Wanister Bog (NZ2549), Waldrige Fell, Durham, 7.vii.2005; *Bombylius minor* L. (Bombyliidae), one specimen hovering 3 m above a patch of bare sand at Bovington TA, Dorset, 24.vii.2004, a parasitoid of the solitary bee, *Colletes succinctus* and a declining species with almost all recent records from the Dorset Heaths; *Freraea gagatea* R.-D. (Tachinidae), one specimen, Isleworth, Middx (VC21), TQ17, 13–2.vi.2005, Malaise, known from about 10 sites, apparently a new county record; *Litophasia hyalipennis* (Fall.) (Tachinidae), one specimen, pan trap in *Phragmites*, same data as previous species, recently found on a small number of sites in southern England, a typical 'brownfield site' species of early successional stages; *Tachina grossa* (L.) (Tachinidae), two specimens from heathland, Wareham, Dorset, 25.vii.2004, swept off *Eupatorium cannabinum*, leg. M. Townsend and B. Schulten; *Psilopa marginella* Fall. (Ephydriidae), 5 specimens, Bovington TA, Dorset, 24.vii.2004, by suction sampling in *Molinia caerulea* tussocks, a new county record for a short-winged fly with few records from southern England; *Chlorops gracilis* Meigen (Chloropidae), swept from *Calamagrostis epigejos* in Beds, a new county record, a widespread but local species on heavy soils in damp woods, fens and ditches; *Camilla atrimana* Strobl (Camillidae), Isleworth, Middx (VC21, TQ17), 28.vii.–3.viii.2005, associated with rabbit dung with very few records known to the exhibitors; *Opomyza lineatopunctata* von Roser (Opomyzidae), found in numbers on

Molinia caerulea at Wareham Forest, Dorset, 25.vii.2005, also recorded from the same plant at other sites in England.

MERRIFIELD, R.K. & MERRIFIELD, R.M. – Diptera from 2005 Field Meetings and Ruislip Woods: *Tipula pierrei* Tonnoir (Tipulidae), Ruislip Woods, Ruislip Lido (TQ087892), 26.viii.2003; *Ogcodes gibbosus* (L.) (Acroceridae), Aston Rowant NNR, Beacon Hill, Oxon (SU7297), 11.vi.2005, with photograph of the specimen in a glass tube; *Choerades marginatus* (L.) (Asilidae), Ruislip Woods NNR, Park Wood, Middx. (TQ088887), 28.vi.2005, also a photograph of a mating pair; *Chlorops gracilis* Mg. (Chloropidae), Castor Hanglands, Peterborough (TF1101), 4.vi.2005, with photograph taken in the field.

PARKER, M.J. – Some rare and local Diptera taken in 2005 from Dorset (VC9), Durham (VC66) and Kintyre (VC101): *Oxycera morrisii* Curtis (Stratiomyidae), Dene Mouth (NZ454411), Durham, female swept from coastal seepage, 5.vii; *O. pygmaea* (Fall.), two males from same locality and date as previous species; *Stratiomys potamida* Mg. (Stratiomyidae), disused East Hetton Colliery (NZ346367), female swept from streamside vegetation, 8.vii; *Choerades marginatus* (L.) (Asilidae), Cranbourne Chase (ST9718), female basking on pine *Pinus* logs, 7.viii; *Didea fasciata* Macq. (Syrphidae), Ballochgar Forest (NR779278), Kintyre, male at *Cirsium arvense* (L.) flowers, 18.vi; *Eriozona erratica* (L.) (Syrphidae), Stubhampton Bottom (ST896163), Cranbourne Chase, Dorset, 11.vi; *Eristalis rupium* F. (Syrphidae), Swinhope Head 'house area' (NY896344), meadowland adjacent to a stream, male at *Conopodium majus* flowers, 7.vii; *Heringia pubescens* (Delucchi & Pschorn-Walcher) (Syrphidae), Cranbourne Chase (ST971180), Dorset, male at *Euphorbia amygdaloides*, 1.v; *Lejogaster tarsata* (Megerle in Mg.) (Syrphidae), Shotover Heath (SY994855), male and Wytch Heath (SY982853), female, both at *Daucus carota* flowers, 17.vii; *Platycheirus amplus* Curran (Syrphidae), Aros Moss, Kintyre (NR681223), male, 17.vi, a new record for Kintyre; *Rhingia rostrata* (L.) (Syrphidae), Cranbourne Chase (ST971180), Dorset, female on bramble *Rubus* leaf in shaded situation beneath an oak tree, 16.vii; *Myopa fasciata* Mg (Conopidae), Brownsea Island (SZ024878), Dorset male at *Senecio jacobaea* flowers, 8.viii; *Tetanops myopinus* Fall. (Ulidiidae), Tees Mouth (NZ536280), Durham, both sexes swept from sand dunes, 4.vii; *Campiglossa producta* (Loew) (Tephritidae), Bindon Hill, West Lulworth (SY828803), two males swept from herb-rich chalk grassland, 4.ix; *Dioxya bidentis* (R.-D.) (Tephritidae), Bindon Hill, West Lulworth (SY828803), both sexes swept from herb-rich chalk grassland, 4.ix; *Ensina sonchi* (L.) (Tephritidae), Higher Melcombe (SY754025), Melcombe Bingham, Dorset, both sexes swept from *Sonchus arvensis*, 1.ix; *Urophora cuspidata* (Mg.) (Tephritidae), the Grove, Portland (SY698729), Dorset, a female swept from limestone grassland, 23.vii.

PERRY, I. – A selection of uncommon Diptera found during 2005: *Nephrotoma crocata* (L.) (Tipulidae), Center Parcs, Elveden, Suffolk, 19.vi, at edge of scrub adjacent to damp sandy ground; *Chrysopilus erythrophthalmus* Loew (Rhagionidae), River Findhorn, Randolph's Leap, Moray, 13.vii, on exposed shingle partly shaded by trees, first record from the Scottish Highlands; *Xylomya maculata* (Mg.) (Xylomyidae), Denny Wood, New Forest, emerged 18.vi, from puparium found in beech rot hole on 1.vi; *Callicera aurata* (Rossi) (Syrphidae), Durlston Country Park, Swanage, Dorset, 3.viii, a female on flowers of parsnip *Pastinaca sativa*; *Urophora spoliata* (Hal.) and *Terellia vectensis* (Collin) (Tephritidae), Bindon Hill, Lulworth, Dorset, 31.vii, both swept from their food plant saw-wort *Serratula tinctoria* in calcareous grassland; *Odinia hendeli* Collin (Odiniidae), Lode, Cambs, 21.vi, on exposed heartwood of a horse-chestnut *Aesculus* sp., which also contained an active

sap run; *Microsoma exiguum* (Mg.) (Tachinidae), Pondhead Inclosure, New Forest, Hants, 29.v, swept from edge of ride; *Athrycia impressa* (Wulp) (Tachinidae), Morden Bog, Dorset, 4.viii, swept from heather in dry heathland; *Townsendiellomyia nidicola* (Townsend) (Tachinidae) (Plate 4, Fig. 16), Durlston Country Park, Swanage, Dorset, 3.viii, several males on parsnip *Pastinaca sativa*; Cheyne Weare, Portland, 1.viii, on flowers of an unidentified ornamental shrub, first found in Britain in 1984, this species appears to be well established along the Dorset coast; *Frontina laeta* (Mg.) (Tachinidae) (Plate 4, Fig. 18), Stoborough, Dorset, 3.viii, a female on parsnip flowers on roadside verge adjacent to heathland; *Hemyda vittata* (Mg.) (Tachinidae), Stoborough, Dorset, 4.viii, a male as above; Crab Wood, Hants, 3.vi, several on wood spurge *Euphorbia amygdaloides* L. flowers, a further extension westward for a species that has been extending its range in recent years; *Blepharipa schineri* (Mesnil) (Tachinidae), Park Ground Inclosure, 30.v and Buskett's Lawn Inclosure, 31.v, both in New Forest, Hants, and Crab Wood, Hants, 4.vi, all on wood spurge flowers, a recent addition to the British list that appears to be well established in S. Hants.

STOREY, M.—Two examples of *Atylotus rusticus* (Tabanidae), Otmoor Rifle Range, Oxon, 9.vii.2005: male visiting wild carrot *Daucus carota*, flowers; female investigating curled dock *Rumex crispus*; new to Oxon, otherwise only recent records from Bucks and the Central Weald apart from a small number of recent records from the longer term stronghold of the Lewes/Eastbourne area of E. Sussex.

COLEOPTERA

ALLEN, A.J.W.—A selection of beetles collected in 2004 and 2005. *Zabrus tenebrioides* (Goeze) (Carabidae), Damerham, Hampshire, SU0818, common in a cornfield, viii.–ix.2004; Cranborne, Dorset, SU0313, several seen on a grassy path between two ploughed fields, 11.ix.2005 and 1.x.2005. *Philonthus punctus* (Gravenhorst) (Staphylinidae), Shellness, Isle of Sheppey, Kent, TR0568, one at the edge of a dyke close to the shore, 15.viii.2005. *Aphodius putridus* (Geoffroy) (Scarabaeidae), Detling, Kent, TQ7858, in rabbit droppings, 25.iv.2004. *Lyctus brunneus* (Stephens) (Bostrichidae), Mallard Wood, New Forest, Hampshire, SU3109, one in dead beech, 19.vi.2005. *Aplocnemus nigricornis* (F.) (Melyridae), Denny Wood, New Forest, Hampshire, SU3306, one, 20.v.2004. *Diaperis boleti* (L.) (Tenebrionidae), Denny Wood, New Forest, Hampshire, SU3306, several in birch polypore, 11.xi.2005, the first the exhibitor has found in the New Forest, a beetle that has become much more widespread in recent years but which was not found in Hampshire by David Appleton. *Oncomera femorata* (F.) (Oedemeridae), Detling, Kent, TQ7858, one by beating ivy, 23.ix.2005. *Cryptocephalus biguttatus* (Scopoli) (Chrysomelidae), Ambersham Common, Sussex, six males and one female seen, 8.vi.2005. *Cryptocephalus frontalis* Marsham (Chrysomelidae), Broyle Side, Sussex, TQ4714, several by beating a hawthorn hedge, 18.vi.2005. *Cryptocephalus parvulus* Müller (Chrysomelidae), Lavington Common, Sussex, TQ9418, two, 8.vi.2005. *Cryptocephalus primarius* Harold (Chrysomelidae), Ballard Down, Dorset, SZ08, a pair, 3.vi.2004. *Byctiscus populi* (L.) (Rhynchitidae), Ham Street Woods, Kent, TQ9835, several on aspen, 30.v.2005.

CUMING, N. St J.—*Rhynchites auratus* (Scopoli) (Rhynchitidae), Colchester area, Essex, on an old hedge of *Prunus spinosa*, iv.–vii.2005, evidence of a strong breeding colony found of this supposedly extinct to Britain species, mating was observed on several occasions; the exhibit showed typical specimens, together with examples showing a wide size variation, also examples of larvae found feeding on the kernels of

P. spinosa. *Isochnus populicola* (Silfverberg) (Curculionidae), Abberton, Essex, TL9618, found on *Salix fragilis*, iv.–viii.2005, together with the adults, examples of 'blotch' leaf mines showing larval development, early and late instar larvae, and pupae.

DICKSON, R. J. – *Agrius* sp. (Buprestidae), Botley Wood, S. Hampshire, SU5410, in Malaise trap, 25–26.vi.2005. *Silis ruficollis* (F.) (Cantharidae), Hook Park shore, South Hampshire, SU4904, 13.vii.2005. *Endomychus coccineus* (L.) (Endomychidae), Kites Croft near Fareham, S. Hampshire, SU5206, one under loose willow bark, ix.2005, D. M. Appleton. *Harmonia axyridis* (Pallas) (Coccinellidae), The Moors Nature Reserve, Bishop's Waltham, S. Hampshire, SU5516, one swept, 22.viii.2003 [sic]. *Bitoma crenata* (F.) (Colydiidae), Botley Wood, S. Hampshire, SU5410, 10–11.vi.2005. *Pogonocherus hispidus* (L.) (Cerambycidae), Fareham, S. Hampshire, SU5706, 31.vii.2005. *Psylliodes* sp. (Chrysomelidae), Wallington water meadows, S. Hampshire, SU5807, beaten from hop *Humulus lupulus* overgrowing a blackthorn and hawthorn hedge, 7.viii.2005, these were close to *P. attenuatus* (Koch) but lacked a cross formed by the ocular furrows and the anterior margins of the frontal calli. *Platystomos albinus* (L.) (Anthribidae), Botley Wood, S. Hampshire, SU5410, one male in Malaise trap, 10–11.vi.2005.

GIBBS, D. – *Dyschirius impunctipennis* Dawson (Carabidae), Titchwell RSPB Reserve, W. Norfolk, TF7544, 10–17.v.2005 and 13–20.vii.2005. *Pogonus luridipennis* (Germar) (Carabidae), Titchwell RSPB Reserve, W. Norfolk, TF7544, 10–17.v.2005. *Pogonus littoralis* (Duftschmid) (Carabidae), Titchwell RSPB Reserve, W. Norfolk, TF7544, 13.vii.2005. *Dromius longiceps* Dejean (Carabidae), Titchwell RSPB Reserve, W. Norfolk, TF7544, 10–17.v.2005. *Cercyon bifenestratus* Küster (Hydrophilidae), Titchwell RSPB Reserve, W. Norfolk, TF7544, 10–17.viii.2005. *Pyropterus nigroruber* (De Geer) (Lycidae), Edwinstowe (Centre Parcs), Notts, SK6263, 2.vii.2005. *Ampedus elongantulus* (F.) (Elateridae), Radstock Sidings, N. Somerset, ST6954, 15.v.2005. *Cardiophorus asellus* Erichson (Elateridae), Elveden (Centre Parcs), W. Suffolk, TL8080, 8.v.2005. *Cerapheles terminatus* (Ménétrières) (Melyridae), Poole Harbour, Shotover Moor, Dorset, SY9985, 2.vi.2005. *Conopalpus testaceus* (Olivier) (Melandryidae), Edwinstowe (Centre Parcs), Notts, SK6363, 2.vii.2005. *Ceutorhynchus atomus* Boheman (Curculionidae), Elveden (Centre Parcs), W. Suffolk, TL8080, 8.v.2005.

HALSTEAD, A. J. – *Ampedus elongantulus* (F.) (Elateridae), Bedford Purlieu, Northamptonshire, TF041003, swept, 5.vi.2005. *Cantharis paludosa* Fallen (Cantharidae), Moll of Kintyre, NR5908, swept 18.vi.2005. *Hedobia imperialis* (L.) (Anobiidae), Arboretum, RHS Garden, Wisley, Surrey, TQ061582, swept from *Robinia pseudoacacia*, 26.v.2005. *Korynetes caerulescens* (De Geer) (Cleridae), Royston, Herts, TL356407, on *Berberis thunbergii*, 29.v.2005. *Rodolia cardinalis* (Mulsant) (Coccinellidae), Carlyle Square, Chelsea SW3, TQ269779, pupa on *Acacia dealbata*, 26.x.2005, imago emerged 8.xi.2005, this is near to where the species was first found in the UK in 2003. *Harmonia axyridis* (Pallas) (Coccinellidae), Royal Avenue, Chelsea SW3, TQ277783, on lime trees, 26.x.2005, six colour forms exhibited, this species was recorded new to UK in 2004. *Anatis ocellata* (L.) (Coccinellidae), Stoke Wood, east of Oxshott, Surrey, TQ162606, swept, 22.v.2005, a form lacking pale margins to the spots. *Coccinella magnifica* Redtenbacher (Coccinellidae), Horsell Birch, near Woking, Surrey, SU988597, swept 2.iv.2005. *Pogonocherus hispidulus* (Piller & Mitterpacher) (Cerambycidae), Stoke Wood, east of Oxshott, Surrey, TQ162606, swept, 22.v.2005. *Galerucella pusilla* (Duftschmid) (Chrysomelidae), Castor Hanglands, Northamptonshire, TF119016, swept, 4.vi.2005. *Platyrhinus resinosus* (Scopoli) (Anthribidae), Bedford Purlieu, North-

amptonshire, TF041003, swept, 5.vi.2005. *Platystomos albinus* (L.) (Anthribidae), Barnack Hills & Holes NNR, Northamptonshire, TF075047, swept, 4.vi.2005.

HODGE, P. J. – Twelve species of Coleoptera collected in Sussex and Kent during 2004 and 2005, including a rove beetle not previously recorded from the British Isles. *Acilius canaliculatus* (Nicolai) (Dytiscidae), St. Dunstan's Farm, Heathfield, E. Sussex, TQ608197, female in pond, 8.x.2004 and Combe Haven Level, Crowhurst, E. Sussex, TQ754106, female in recently excavated peaty pool, 8.ix.2005. *Hydrochus ignicollis* (Motschulsky) (Hydrochidae), Railway Land LNR, Lewes, E. Sussex, TQ423097, male in marsh ditch, 7.x.2005, a new record for the lower Ouse valley. *Enochrus nigrinus* (Sharp) (Hydrophilidae), Moneypenny Pits, East Guldeford, E. Sussex, TQ945208, in disused gravel-pit, 2.vi.2004. *Astrapaeus ulmi* (Rossi) (Staphylinidae), Newhaven, E. Sussex, TQ449001, male under stone at base of chalk cliffs, 16.v.2004, a native of southern Europe, this species is new to Britain (another male was found in May 2005 by D. Hance (paper in prep.)). *Hylecoetus dermestoides* (L.) (Lymexylidae), Snipe Bog, Burton Park, W. Sussex, TQ971178, female flying in afternoon sunshine, 26.v.2005. *Mordellistena nanuloides* Ermisch (Mordellidae), Oare near Faversham, E. Kent, TR008630, several on sea wormwood *Seriphidium maritimum* growing on the sea wall, 29.vi.2004. *Meloe rugosus* Marsham (Meloidae), Castle Hill, Newhaven, E. Sussex, TV445999, male crawling amongst long grass on cliff-top, 25.iii.2005, first discovered at this site by D. Bangs in 2004 which is a new vice-county record. *Sitona cinerascens* Fahraeus (Curculionidae), Cuckmere Haven, E. Sussex, TV519976, female swept from a small area of saltmarsh adjacent to a grassy area close to the shingle beach, 17.viii.2005, this is a new vice-county record, the host plant, said to be *Lotus tenuis*, has been recorded from this site. *Bagous puncticollis* Boheman (Curculionidae), East Guldeford Level, Rye, E. Sussex, TQ955217, male in marsh ditch, 2.vi.2004 and Broomhill Level, Camber, E. Sussex, TQ966197, male in marsh ditch, 5.vi.2004. *Mecinus janthinus* Germar (Curculionidae), Brickfield Meadow, Fairwarp, E. Sussex, TQ473264, one swept in flowery grassland, 16.v.2005, a new vice-county record. *Rhamphus subaeneus* Illiger (Curculionidae), Colhook Common near Petworth, W. Sussex, SU964272, several on leaves of wild apple, 22.v.2005, a new vice-county record. *Trypodendron signatum* (F.) (Curculionidae), Sparite Wet Hole near Parham, W. Sussex, TQ054155, one crawling on stump of recently felled birch tree, 13.viii.2004, a new vice-county record.

MORRIS, M.G. – Some weevils (Curculionoidea) from Europe and the Canary Islands. (1) Continental specimens of *Rhynchites auratus* (Scopoli), recently re-discovered in England, showing the great range of size in the species, probably associated with different hosts. Male and female near Pestani, Macedonia, 17 and 14.vi.1990, beaten from *Prunus dulcis* (almond). Male near Ledignan, Gard, France, 18.iv.1989; female Causse Mejean, Lozere, France, 24.vii.2004, both beaten from *Prunus spinosa* (blackthorn). (2) Recently described and undescribed species. *Eutrichapion mystriophorum* Alonso-Zarazaga, 1993, an apionid which apparently replaces *E. viciae* (Paykull), a very common species in Europe (including the British Isles), in the Iberian Peninsula. Male and female, Barragem de Bravura, Algarve, Portugal, 5.v.2003, on *Vicia cracca*, Tufted Vetch?. *Phrissotrichum joannium* Ehret, 1997, the largest species in this apionid genus and characteristic of the fauna of the Algarve. Male and female, Cabo São Vicente, Algarve, Portugal, 10.iv.2000, beaten from *Cistus palhinhae* (no English name). *Catapion vulnerariae* Wanat & Dieckmann, 1991, an apionid addition to the fauna of *Anthyllis vulneraria* (kidney Vetch). Paratypes, 'A-Bgld-Breitenbrunn, Thenau NSG 1990.05.06' On *Anthyllis vulneraria*, leg. W. Suppantisch [in coll. MGM]. *Aspidapion acerifoliae* Suppantisch,

1996, an apionid endemic to the Canary Islands and so far known only from Tenerife. Quite distinct from *A. radiolus chalybeipenne*, a very common Macaronesian apionid. Male and female, Buenavista, Tenerife, 24.iv.2003, on *Lavatera acerifolia*, leg. W. Suppantischitsch [in coll. MGM]. *Hemitrichapion* (*Lotapion*) sp., an apparently undescribed Macaronesian apionid known from Madeira and the Canary Islands. Possibly, however, *H. (L.) wollastoni* (Chevrolat, 1852), if that species has been wrongly identified as = *Holotrichapion rotundipenne* (Wollaston, 1854). Arenas Blancas, El Hierro, Canary Is., 14.iii.2003, on *Lotus glaucus*. *Pseudoprotapion* sp., a distinctive large species of this apionid genus that is apparently undescribed. Male and female, near Parises, Algarve, Portugal, 27.iv.2004, on a distinctive species of *Astragalus* (milkvetch). *Tychius colonnelli* Caldara, 1991, a curculionine weevil endemic to the Canaries, where it has been found in Tenerife and La Palma (new island record). Larvae feed on the seeds of *Lotus* spp. Male and female, Montaña Tagoja, La Palma, Canary Is., 13/15.vi.2001, shaken from *Lotus campylocladus*. *Mogulones biondii* Colonnelli, 1990, a ceutorhynchine weevil known only from Gran Canaria, where it is associated with an *Echium* sp. Male and female from near Moya, Gran Canaria, Canary Is., 18/19.iii.1994, on *Echium*. A *Mogulones* species (indet.) new to Lanzarote, probably conspecific with the montane *M. delectus* Colonnelli, 1992, known hitherto only from Fuerteventura, although the exhibited species is lowland and apparently feeds on *Echium lanzarottense*, endemic to Lanzarote. Male and female collected from Valle de Malpaso, Lanzarote, Canary Is., on *E. lanzarottense*. Three undescribed species of *Laparocerus*, a very speciose Macaronesian entimine genus, which Dr Antonio Machado is studying. Species A, two examples, Las Moradas, La Palma, 30.xi.2000, under stones at c. 2000 m; Species B, Hermigua, La Gomera, 19.xii.1995, on *Euphorbia regis-jubae*; Species C, near Mt. Chiombe, Tenerife, 12.iii.1993, swept. All Canary Is. An apparently undescribed species of *Cathormiocerus*, an entimine genus, confined to the extreme western edge of the Palaearctic and speciose in Iberia and western North Africa. The sp. will be described by R. Borovec, who is revising the genus. Cabo São Vicente, Algarve, Portugal, 7.v.2003, on sand under rosettes of *Plantago coronopus* (buck's-horn plantain). *Otiorhynchus atrohippus* Davidian & Yunakov, 2001. A newly described species in this very speciose entimine genus. Paratypes. Studentsheskyi Pass, west Caucasus, Georgia. In alpine meadow, 12.vii.1994. leg. G.E. Davidian [in coll. MGM]. *Plinthus helenae* Davidian, 1992, a high-altitude molytine weevil. Paratypes. Mt. Shalbuzdae, Mingrella, Georgia, 13.vii.1990, 2000–2400 m. leg. G.E. Davidian [in coll. MGM].

NELSON, B. – Two species of weevil new to Ireland. *Stenopelmus rufinasus* Gyllenhal (Eirrhinidae), Lough Skale, Fermanagh, H310441, taken in a mesotrophic lake, 7.viii.2005, its foodplant, the water fern *Azolla filiculoides*, has not been common in Ireland until recently, but is now spreading. *Bagous lutosus* (Gyllenhal) (Curculionidae), Carrickslavan, Leitrim, G975043, swept in fen/swamp by deep drain into turlough-like marsh, 3.x.2005, this rare species (RDB1 in Great Britain), reputed to be associated with branched bur-reed *Sparganium erectum*, had not been taken for some years, but has now occurred at Ainsdale, Lancashire and in the Norfolk Breckland.

OWEN, J.A. & OWEN, D.J.M. – Photographs illustrating early stages in the genus *Cryptocephalus* (Chrysomelidae) with examples involving the following species: *aureolus*, *biguttatus*, *coryli*, *decemmaculatus*, *frontalis*, *fulvus*, *nitidulus*.

TELFER, M.G. – *Bembidion quadripustulatum* Audinet-Serville (Carabidae), Sutton Gault causeway, Ouse Washes RSPB reserve, Cambridgeshire, TL4279,



Jones, A M et al. 2006. "2005 Annual Exhibition. Imperial College, London SW7 - 12 November 2005." *British journal of entomology and natural history* 19(3), 162–192.

View This Item Online: <https://www.biodiversitylibrary.org/item/205293>

Permalink: <https://www.biodiversitylibrary.org/partpdf/263726>

Holding Institution

Smithsonian Libraries and Archives

Sponsored by

Biodiversity Heritage Library

Copyright & Reuse

Copyright Status: In Copyright. Digitized with the permission of the rights holder

Rights Holder: British Entomological and Natural History Society

License: <http://creativecommons.org/licenses/by-nc/3.0/>

Rights: <https://www.biodiversitylibrary.org/permissions/>

This document was created from content at the **Biodiversity Heritage Library**, the world's largest open access digital library for biodiversity literature and archives. Visit BHL at <https://www.biodiversitylibrary.org>.