

A NEW ELAPHRUS (COLEOPTERA, CARABIDAE)⁽¹⁾

VASCO M. TANNER

Professor of Zoology and Entomology
Brigham Young University

Elaphrus torreyensis Tanner, new species

FEMALE: FORM, robust, body more elongate than other species of this genus; color metallic green above, cupreous beneath on the metothorax, abdomen and proximal portions of the legs; tibia and tarsus dark reddish; labrum, mandibles and distal portions of palpi black; the eyes large and black; interorbital width 1.6 mm with a round central boss falling off towards and back of orbits; just back of the central boss is a depressed circular spot with deep punctures. HEAD, especially the depressions on the dorsal and front deeply punctured while the elevated portions and the gular area are practically free from punctation. Two pairs of setae, one pair on the lateral portion of the clypeus and the other on the median inner margin of the orbits. ANTENNAE shorter than in the *lecontei* complex, reaching only to the posterior third of the thorax. Articles 1 to 3 and the base of fourth glabrous, while the remaining seven segments are setiferous with two long setae on each segment; the third segment the longest one, being twice as long as the second. THORAX 2.6 mm wide, with a deep hour glass shaped depression, bordered with two round depressions filled with deep punctures; the margins and humeri deeply punctured; while the elevated discal portions are finely and sparsely punctured. ELYTRA 4.1 mm wide, with ocellate foveae violaceous in the center and from which a setae $\frac{3}{4}$ mm long extends; 21 ocellate foveae on the left elytron and 25 on the right one. The whole surface is sparsely and finely punctured except on the inner humeri, where they are deeply and closely punctured similar to the contiguous thoracic areas. The ventral unpunctured except on the lateral portions of the first two abdominal segments and the episterna of the thorax; the episternum of the prothorax is rather closely and deeply punctured. Total body length 10 mm.

FEMALE GENITALIA: Valvifers and coxites larger and setae not so styliform as in *clairvillei* and *olivaceus*. (Fig. I.) An examination of many specimens shows that the female genitalia have a few distinctive characters. After studying

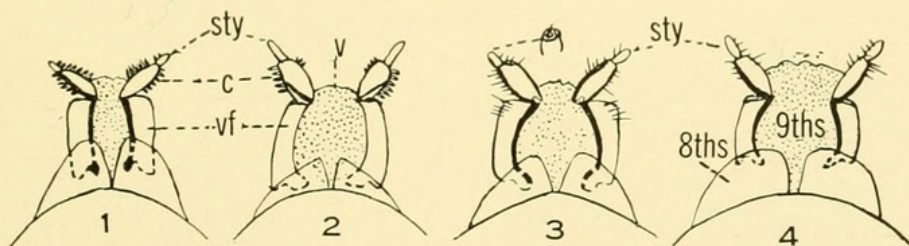


Fig. I. Female genitalia of 1. *Elaphrus clairvillei*; 2. *E. olivaceus*; 3. *E. torreyensis*; 4. *E. lecontei*. ((sty—stylus; c—coxite; vf—valvifer; v—vulva; 8ths—eighth sternite; 9ths—ninth sternite.)

(1) Contribution No. 97, Department of Zoology and Entomology, Brigham Young University.



Tanner, Vasco M. 1941. "A NEW ELAPHRUS (COLEOPTERA, CARABIDAE)." *The Great Basin naturalist* 2, 137–138.

View This Item Online: <https://www.biodiversitylibrary.org/item/33885>

Permalink: <https://www.biodiversitylibrary.org/partpdf/247688>

Holding Institution

Harvard University, Museum of Comparative Zoology, Ernst Mayr Library

Sponsored by

Harvard University, Museum of Comparative Zoology, Ernst Mayr Library

Copyright & Reuse

Copyright Status: In copyright. Digitized with the permission of the rights holder.

Rights Holder: Brigham Young University

License: <http://creativecommons.org/licenses/by-nc-sa/3.0/>

Rights: <https://biodiversitylibrary.org/permissions>

This document was created from content at the **Biodiversity Heritage Library**, the world's largest open access digital library for biodiversity literature and archives. Visit BHL at <https://www.biodiversitylibrary.org>.