

## NOTES ON HESPEROTYCHUS

(Coleoptera: Pselaphidae)

A. A. GRIGARICK AND R. O. SCHUSTER

*University of California, Davis*

When the genus *Hesperotychus* was proposed (Schuster & Marsh, 1958), it included ten species represented by 54 specimens. Eight of the species considered were based on a study of less than six specimens each and four of the species on single specimens. One additional species was described from Oregon by Park and Wagner (1961). It, too, was described from a single male.

Additional specimens of this genus have been collected in California and, in general, they substantiate the species as previously proposed. *Hesperotychus tantillus*, Schuster & Marsh, however, may eventually be shown to be a variant of *H. aculeatus* S. & M. For each of the new distribution records, a male has been slide-mounted and the aedeagus examined. The degree of variation in this structure is considerable but its general form is basic with minor displacements or changes in relative size of its parts.

***Hesperotychus stangei* Grigarick and Schuster, new species**

*Male* (slide): Head 275u long x 270u wide (excluding eyes); pronotum 295u long x 330u wide; elytra 568u long. Dark brown to nearly black; legs, palpi, antennal clubs and elytra lighter and somewhat reddish. Eyes of five distinct peripheral facets; tempora slightly rounded; right mandibular ramus with four teeth, left with five teeth of which the distal three are largest; carina of apical declivity on ventral surface of head nearly obsolete. Pronotum with median basal fovea and three smaller punctures on each side. Winged. Mesosternal carina extending one-half distance to anterior margin of meso-coxal cavities. Pro- (fig. 2) and metatrochanter (fig. 3) spined; subapical spine of protibia small, that of mesotibia apparently lacking and that of metatibia large, about as long as width of tibia. Sternite VI emarginate with a number of glandular setae clustered near emargination. Aedeagus 290u long, as illustrated (fig. 1).

Female resembles male except lacking secondary sexual characters.

The *holotype male* and one paratype male were collected at DAVIS, YOLO COUNTY, CALIFORNIA, in the Entomology Building, January 24, 1960, by L. Stange. They were presumably attracted to lights. Sixty-nine paratype males were collected in a black-light trap at Davis near the University Airport between March 19, and April 4, 1960, by F. E. Strong. Not included in the type series were 34 females, taken with the males on March 19, and one male, March, 1936, Moraga, Contra Costa County, California, by E. S. Ross.

This species is related to *H. aspersus* Schuster & Marsh by the long spines on the pro-and metatrochanter and the similarity of the aedeagi. In *H. aspersus* the central structures of the dorsal lobe are thin and staright. In *H. stangei* this structure is broad basally, constricted at about half its length, and then expanded into a leaf-like form at right angles to the base. The macrosetae of the metatrochanteral spine are on the spine in *H. stangei* while they are on the trochanter proper in *H. asperus*.

The females of two other species collected in the same trap were separated from those of *H. stangei* as follows: *H. stangei* and *H. aculeatus* are smaller than *H. macclayi*, Schuster & Marsh and *H. aculeatus* tends to have elytra with a brownish tinge, whereas in *H. stangei* the color is a more pronounced red. The females are winged in all three species.

One male examined represented a probable cross *H. aculeatus* x *H. stangei*. This specimen had the larger trochanteral spines of *H. aculeatus* but the aedeagus, although aberrant, was that of *H. stangei*.

#### NEW RECORDS

*H. adustus* Schuster & Marsh. Cleveland National Forest, California, 1 ♂, 1 ♀ II-16-58 (I. M. Newell).

*H. ?adustus*. San Jacinto Mtns., California, 1 ♀ III-20-57 (I. M. Newell).

*H. nanus* S. & M. Nashville, El Dorado Co., California, 1 ♂ III-5-58 (L. M. Smith and R. O. Schuster); Bieber, Lassen Co., California, 3 ♂ IV-17-58 (R. W. Gerhardt).

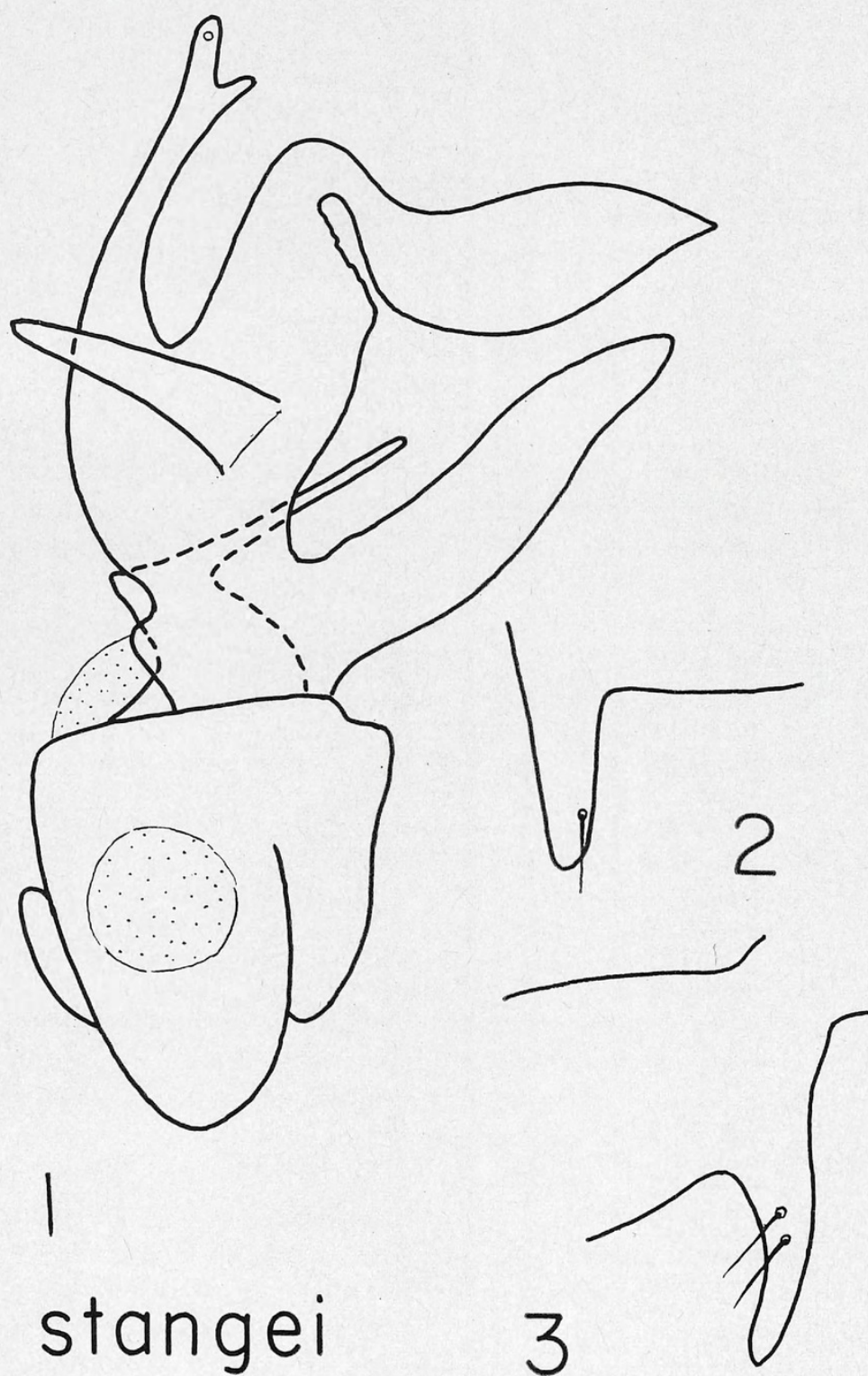
*H. aspersus* S. & M. Davis, Yolo Co., California, 1 ♂ III-19-60 (F. E. Strong).

*H. moratus* S. & M. Near Bolinas, Marin Co., California, 3 ♂ III-24-60, tide flats, (R. O. Schuster).

*H. macclayi* S & M. Nine miles south of Monticello, Napa Co., California, 1 ♂ XII-13-57 (R. O. Schuster); Davis, Yolo Co., California, 12 ♂, 8 ♀ III-19-to IV-4-60, light trap. (F. E. Strong).

*H. ?macclayi*. La Grange, Stanislaus Co., California, 1 ♂ 1-12-59, light trap, (R. P. Allen).

*H. aculeatus* S. & M. Davis, Yolo Co., California, 26 ♂, 9 ♀ IV-4-60, light trap, (F. E. Strong).



stangei

3

EXPLANATION OF FIGURES

Figs. 1-3. *Hesperotychus stangei*. 1. Aedeagus, dorsal; 2. Protrochanter; 3. Metatrochanter.

*H. ramus* Park & Wagner. Ten miles north of Philomath, Oregon, 2 ♂, newt stomach, (R. Freiburg).

#### LITERATURE CITED

PARK, O. AND J. WAGNER

1961. Family Pselaphidae. In Hatch, The Beetles of the Pacific Northwest. Part III. Univ. Washington Publ. Biol., 16: 1-380.

SCHUSTER, R. O. AND G. A. MARSH

1958. A New Genus of Tychini from California (Coleoptera: Pselaphidae). Pan-Pac. Ent. 34(3):125-137.

#### ZOOLOGICAL NOMENCLATURE

##### NOTICE OF PROPOSED USE OF PLENARY POWERS IN CERTAIN CASES (A. (N.S.) 54

In accordance with a decision of the 13th International Congress of Zoology, 1948, public notice is hereby given of the possible use by the International Commission on Zoological Nomenclature of its plenary powers in connection with the following cases, full details of which will be found in Bulletin of Zoological Nomenclature, Vol. 19, Part 3 to be published on 28th May, 1962.

- (2) Validation of the specific name *caricae* (*Cynips*) Linnaeus, 1762 (Insecta, Hymenoptera). Z.N.(S.) 1087;
- (4) Designation of a neotype for *Gryllus campestris* Linnaeus, 1758 (Insecta, Orthoptera). Z.N.(S.) 1485;
- (5) Validation of the specific name *alveafrons* (*Dasiops*) McAlpine, 1961 (Insecta, Diptera). Z.N.(S.) 1492;
- (10) Suppression of Dahl's "Coleoptera und Lepidoptera", 1823. Z.N.(S.) 398;
- (11) Suppression of Kishida's pamphlet "Notes on the Family Trombididae of Japan", 1909. Z.N.(S.) 400.

Any zoologist who wishes to comment on any of the above cases should do so in writing, and in duplicate, as soon as possible, and in any case before 28th November, 1962. Each comment should bear the reference number of the case in question. Comment received early enough will be published in the *Bulletin of Zoological Nomenclature*. Those received too late for publication will, if received before 28th November, 1962, be brought to the attention of the Commission at the time of commencement of voting. All communications on the above subject should be addressed as follows: The Secretary, International Commission on Zoological Nomenclature, c/o British Museum (Natural History), Cromwell Road, LONDON, S.W. 7, England.—W. E. CHINA, *Assistant Secretary to the International Commission on Zoological Nomenclature*.



Grigarick, Albert A. and Schuster, R O. 1962. "Notes on Hesperotychus (Coleoptera: Pselaphidae)." *The Pan-Pacific entomologist* 38, 99–102.

**View This Item Online:** <https://www.biodiversitylibrary.org/item/226203>

**Permalink:** <https://www.biodiversitylibrary.org/partpdf/237879>

**Holding Institution**

Pacific Coast Entomological Society

**Sponsored by**

IMLS LG-70-15-0138-15

**Copyright & Reuse**

Copyright Status: In copyright. Digitized with the permission of the rights holder.

Rights Holder: Pacific Coast Entomological Society

License: <http://creativecommons.org/licenses/by-nc-sa/4.0/>

Rights: <https://biodiversitylibrary.org/permissions>

This document was created from content at the **Biodiversity Heritage Library**, the world's largest open access digital library for biodiversity literature and archives. Visit BHL at <https://www.biodiversitylibrary.org>.