

## NEW NORTH AMERICAN TABANIDAE. XIV.

AN UNDESCRIBED APATOLESTES FROM THE CALIFORNIA COAST  
(Diptera)CORNELIUS B. PHILIP<sup>1</sup> AND WALLACE A. STEFFAN<sup>2</sup>

A male *Apatolestes* collected on the beach near Davenport, California, by M. T. James, was described and keyed as "sp.B" by the senior author in 1941 and keyed in 1954 as "probably n.sp." It was not named, however, pending discovery of a female which could be associated, since that sex provides better diagnostic characters in the genus. The locality was revisited subsequently by the senior author and members of the California Academy of Sciences in the appropriate season without acquiring further specimens.

A female related to *A. colei* Philip and provided in a lot of Tabanidae by Dr. A. T. McClay of the University of California at Davis appears to be properly associated, and the species is here-with described as a new species. Whether this species is precinctive on the California Coast will depend on the accumulation of additional material.

***Apatolestes actites*\* Philip and Steffan, new species**  
(Fig. 1)

*Female*.—(Holotype, 16 mm). Eyes bare, with narrow, incomplete, median green band on bronzy ground (relaxed). Post-ocular rim broad, with mostly white and a few black hairs. Front wide and strongly divergent below as in *A. colei* Phil., slightly wider at the lower, feebly-angled, inner corners of eyes than tall; ash-gray pollinose and with short, sparse dark and pale yellow hairs. Ocelligerous tubercle at vertex rather low, black, and with three plain ocelli; basal callosity small, rounded with a short dorsal extension, dark red, blackish on the disc. Subcallus gray pollinose, rather tall but merging imperceptibly with the frons above and cheeks below (Fig. 1 B). Face and cheeks gray pollinose, and with dense pale yellow to whitish hairs, cheeks expanded and face sunken much as in *A. colei* (Philip, 1954, Fig. 1 b). Antennae as in *A. colei*, the pale scape thicker than base of black flagellum, basal vestiture with only an occasional black hair among the white ones. Palpi a little shorter and thicker than *A. colei*, shaggy white hair obscuring the shallow dorsal grooves. Indefinite pinkish integumental shadows in the middle of the cheeks, narrowly along the proximal ocular margins, and on each side of the ocelligerous tubercle at vertex. *Notum*, including antealar tubercles and scutellum, subshiny black, with short white and black hairs, and thinly dusted with gray pollen; a narrow, incomplete mid-dorsal gray

1 U.S. Department of Health, Education, and Welfare, Public Health Service, National Institutes of Health, National Institute of Allergy and Infectious Diseases, Rocky Mountain Laboratory, Hamilton, Montana.

2 University of California, Berkeley, California.

\* from Latin, shore-dweller.



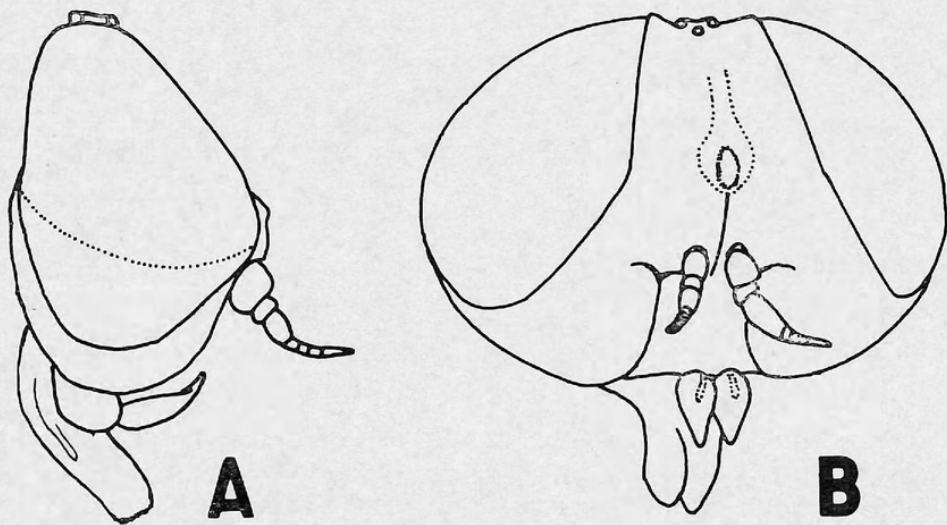


Fig. 1. Head profiles of *Apatolestes actites* new species: A, male; B, female.

line. Scutellum densely white pilose on margins. Pleura and coxae ash-gray pollinose, and densely whitish pilose, with a few darker hairs above. Legs pinkish red, darker at the knees, tips of tibiae and tarsi; femora pale-haired, somewhat long and feathered below, but not as noticeably beneath the hind-tibiae as in the male; tibiae with mixed black and pale yellow short hairs; middle and hind tarsi with rust-colored spinules ventrally. Wings clear, veins yellow-brown, spur-vein at base of  $R_4$  longer than stem, very faint clouds on crossveins and fork. Subepaulets bare. Halteres with brown stems, blackish knobs. *Abdomen* black, black-haired above, the incisures very narrowly paler with narrow, pale-haired fringes dorsally which widen at the sides, entirely pale-haired ventrally except for a few coarse black hairs caudally.

*Male*.—(14 mm.). Enlarged facets occupy about upper three-fourths of eye. Differs from holotype in the usual sexual characters and in overall shaggier-haired appearance, especially on margins of notum and scutellum and on face, palpi, femora and hind tibiae. Palpi obscured by bushy hairs, not truncated as in some species but elongate and rather pointed as in *A. colei* Philip.

*Holotype female* from GOLETA, SANTA BARBARA COUNTY, CALIFORNIA, 22 June 1959 (F. D. Parker) is deposited in the California Academy of Sciences. The collector and one of us (Steffan), collecting together report that the specimen was probably taken in the vicinity of the beach. The allotype is from Davenport, California (14 June 1940, M. T. James) and is in the collections of the U.S. National Museum. A female, additional to the holotype, of *A. colei* from Oro Grande, California, 20 June 1931, in the collection of L. L. Pechuman, agrees closely with the holotype. The



callosity is shaped like a thin upright dagger with a narrow, lateral, basal projection on each side.

Only the female of *A. colei* Philip has frons as wide as the above, from which *A. actites* would quickly separate at couplet 10 (in key, Philip, 1954) on blackish rather than hoary-gray appearance, practically unlined notum, legs reddish rather than yellow, and a larger, darker, more ovoid callosity. The males differ as keyed in couplet 23; that of *A. actites* at once distinguished by its much darker appearance; however, the cheeks are swollen to about the same degree in both. No eye stripe was revivable in *A. colei* female. In addition to being larger, the male of *A. actites* differs from that of *A. comastes* var. *fulvipes* Philip in hyaline costal cell, bushier appearance, and palpal integument not darkened.

#### LITERATURE CITED

PHILIP, C. B.

1941. Notes on three western genera of flies (Diptera Tabanidae). Bull. Brooklyn Ent. Soc., 36: 185-199.  
1954. New North American Tabanidae. VIII. Notes on and keys to the genera and species of Pangoniinae exclusive of *Chrysops*. Rev. Brasil. Entomologia, 2: 13-60.

---

#### RECENT LITERATURE

(The following titles are all from the serial "University of California Publications in Entomology," available from the University of California Press, Berkeley 4, California.)

- THE NORTH AMERICAN SAWFLIES OF THE GENERA ACANTHOLYDA, CEPHALCIA AND NEUROTOMA (Hymenoptera, Pamphiliidae). By W. W. Middlekauff. Vol. 14, No. 2, pp. 51-174, pls. 1-3, 105 text figs. May 20, 1958. Price \$2.50.  
A REVISIONAL STUDY OF THE BEES OF THE GENUS PERDITA F. SMITH, WITH SPECIAL REFERENCE TO THE FAUNA OF THE PACIFIC COAST (Hymenoptera, Apoidea) Part III. By P. H. Timberlake. 14 (5): 303-410, pls. 4-15. October 10, 1958. \$2.00.  
(the same) Part IV. 17 (1): 1-156, pls. 1-17. March 18, 1960. \$3.00.  
MONOGRAPHIC STUDY OF THE GENUS NOMADOPSIS ASHMEAD (Hymenoptera: Andrenidae). By J. G. Rozen, Jr. 15: iv + 202, 218 text figs., 17 maps. September 30, 1958. \$4.00.  
THE GENUS LAELAPS, WITH A REVIEW OF THE LAELAPTINAE AND A NEW SUBFAMILY ALPHALAEAPTINAE (Acarina: Laelaptidae). By V. J. Tipton. 16 (6): 233-356, pls. 22-47. July 12, 1960. \$2.50.  
A TAXONOMIC AND BIOLOGICAL STUDY OF THE GENUS XYELA DALMAN IN NORTH AMERICA. [Hymenoptera: Xyelidae]. By D. J. Burdick. 17 (3): 285-356, pl. 49, 83 text figs., 3 maps, 5 charts. February 16, 1961. \$1.50.—H. B. L.



Philip, Cornelius B. and Steffan, W A. 1962. "New North America Tabanidae. XIV. An undescribed Apatolestes from the California coast (Diptera)." *The Pan-Pacific entomologist* 38, 41–43.

**View This Item Online:** <https://www.biodiversitylibrary.org/item/226203>

**Permalink:** <https://www.biodiversitylibrary.org/partpdf/237870>

#### **Holding Institution**

Pacific Coast Entomological Society

#### **Sponsored by**

IMLS LG-70-15-0138-15

#### **Copyright & Reuse**

Copyright Status: In copyright. Digitized with the permission of the rights holder.

Rights Holder: Pacific Coast Entomological Society

License: <http://creativecommons.org/licenses/by-nc-sa/4.0/>

Rights: <https://biodiversitylibrary.org/permissions>

This document was created from content at the **Biodiversity Heritage Library**, the world's largest open access digital library for biodiversity literature and archives. Visit BHL at <https://www.biodiversitylibrary.org>.