

CERASTIUM CLAWSONII (CARYOPHYLLACEAE):
A SYNONYM OF LINUM HUDSONIOIDES (LINACEAE)

RONALD L. HARTMAN

While preparing a treatment of the Caryophyllaceae for the forthcoming "Chihuahuan Desert Flora" (by M. C. Johnston, J. Hendrickson, and collaborators), I encountered the holotype of *Cerastium clawsonii* Correll (Figure 1). Preliminary observations of this unicate (TEXAS: **Brewster Co.**, McIntyre Ranch, 3 miles S of Alpine, *A. B. Clawson* 29-173, LL) suggested that it was very unusual for a member of the genus *Cerastium*. As Dr. Donovan Correll (1968) noted in the protologue, "it is totally unrelated to all other members of this genus in Texas." On closer inspection, this specimen, which Correll referred to *Cerastium* at the suggestion of Dr. Lyman B. Smith, proves not to be a member of the Caryophyllaceae, but is an immature individual of *Linum hudsonioides* Planchon of the Linaceae. It corresponds well with specimens of *L. hudsonioides* at the Lundell Herbarium (University of Texas at Austin) and agrees in all features available with the description of that species by Rodgers (1963). The most prominent characters are: leaves opposite near the base, alternate above, closely imbricate, linear with mucronate to aristate apices; sepals with conspicuous awns; styles 5, united to near the summit, with capitate stigmas. Unfortunately, fruits are lacking.

ACKNOWLEDGMENT

I wish to thank Dr. Correll for reviewing the manuscript and to acknowledge financial support in the form of a University Post-doctoral Fellowship from The Ohio State University, Columbus, Ohio.

LITERATURE CITED

- CORRELL, D. S. 1968. Some additions and corrections to the flora of Texas —
V. *Wrightia* 4: 25-28.
ROGERS, C. M. 1963. Studies in *Linum*: *L. imbricatum* and *L. hudsonioides*.
Rhodora 65: 50-55.

BOTANY DEPARTMENT
AVEN NELSON BUILDING
UNIVERSITY OF WYOMING
LARAMIE, WYOMING 82071

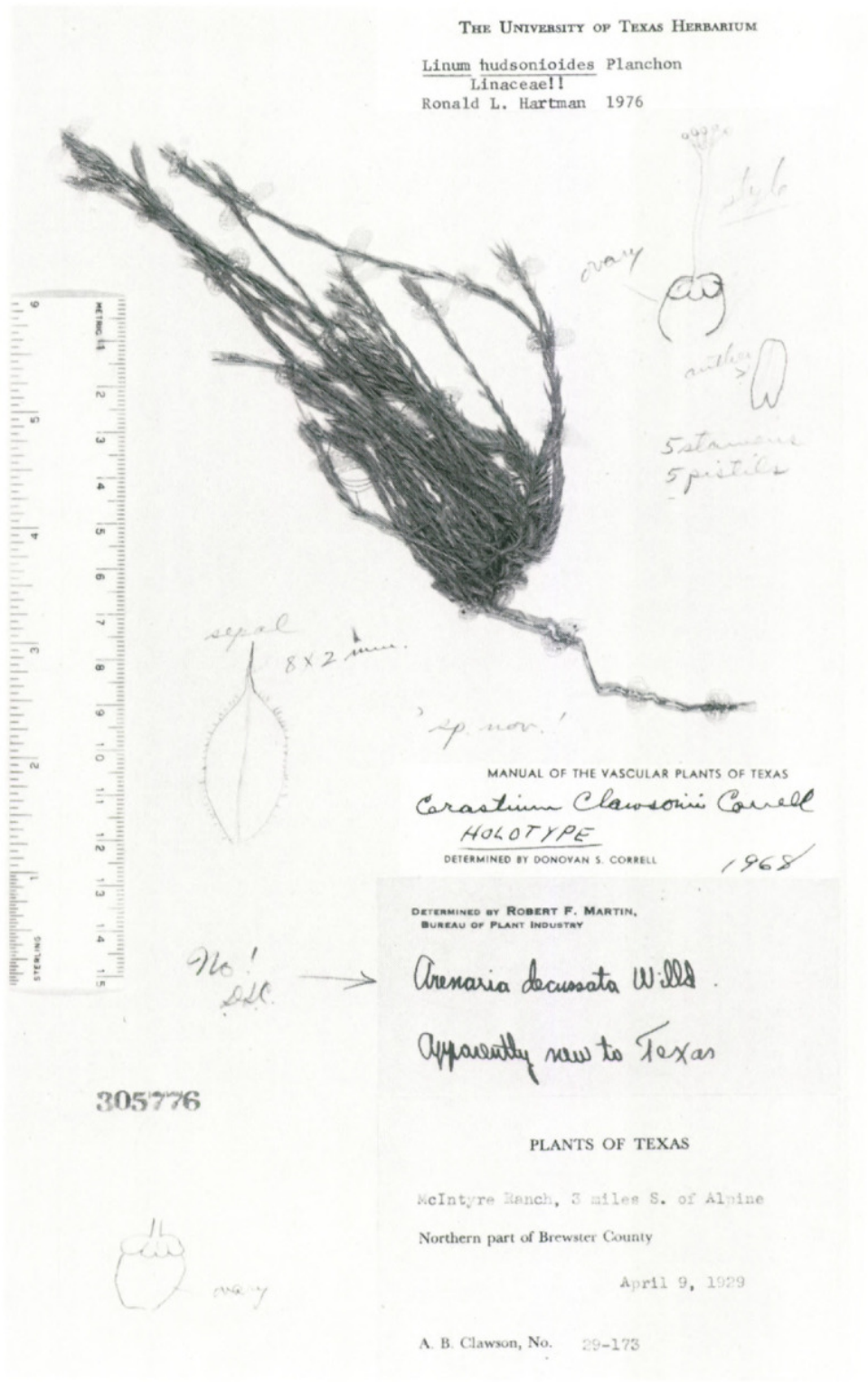


Figure 1. Photograph of holotype of *Cerastium clawsonii* Correll (LL).



Hartman, Ronald L . 1979. "CERASTIUM CLAWSONII (CARYOPHYLLACEAE): A SYNONYM OF LINUM HUDSONIOIDES (LINACEAE)." *Rhodora* 81, 283–284.

View This Item Online: <https://www.biodiversitylibrary.org/item/24157>

Permalink: <https://www.biodiversitylibrary.org/partpdf/189529>

Holding Institution

Missouri Botanical Garden, Peter H. Raven Library

Sponsored by

Missouri Botanical Garden

Copyright & Reuse

Copyright Status: In copyright. Digitized with the permission of the rights holder.

License: <http://creativecommons.org/licenses/by-nc-sa/3.0/>

Rights: <https://biodiversitylibrary.org/permissions>

This document was created from content at the **Biodiversity Heritage Library**, the world's largest open access digital library for biodiversity literature and archives. Visit BHL at <https://www.biodiversitylibrary.org>.