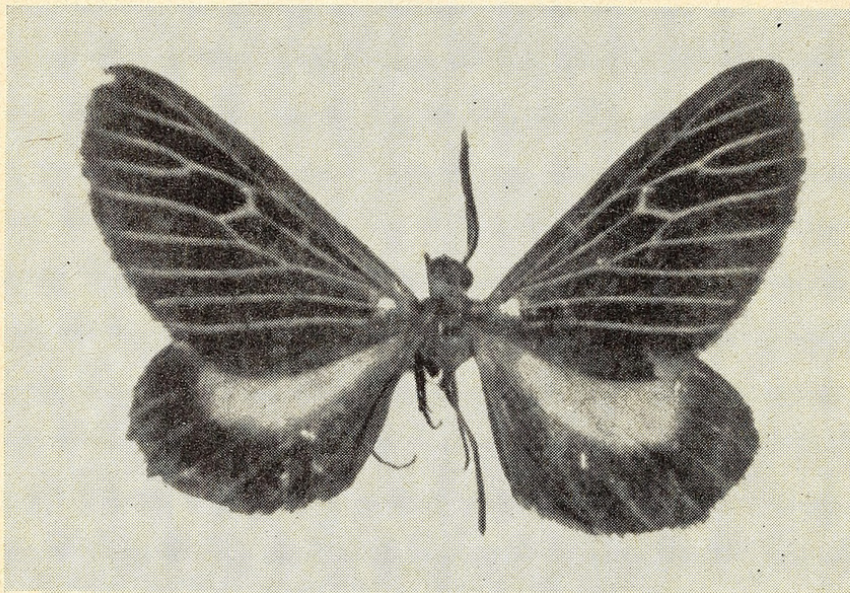


## A NEW SPECIES OF MELANCHROIA (LEPIDOPTERA, GEOMETRIDAE) FROM JAMAICA

BY FREDERICK H. RINDGE

THE AMERICAN MUSEUM OF NATURAL HISTORY

A number of years ago Avinoff and Shoumatoff collected a single geometrid in Jamaica, and the former was unable to find a name for it. He made some descriptive notes for this moth but these were never published. Some years after Avinoff's death, Mr. Shoumatoff brought the specimen and notes to me. The following description and illustrations are the result.



1. Holotype, *Melanchroia venata*, new species.  $\times 2$ .

The author wishes to thank Mr. D. S. Fletcher, of the British Museum (Natural History), and Dr. E. L. Todd, of the United States National Museum, for help with this problem.

### *Melanchroia venata*, new species

**MALE** Head, vertex and front blackish-gray, the latter narrowly pale buff ventrally; palpi with first segment pale buff, terminal segments blackish-gray. Thorax orange-brown above, blackish-gray laterally, orange-brown below; legs with orange-brown coxae, terminal segments blackish-gray. Abdomen blackish-gray above, below with broad ocher stripe.

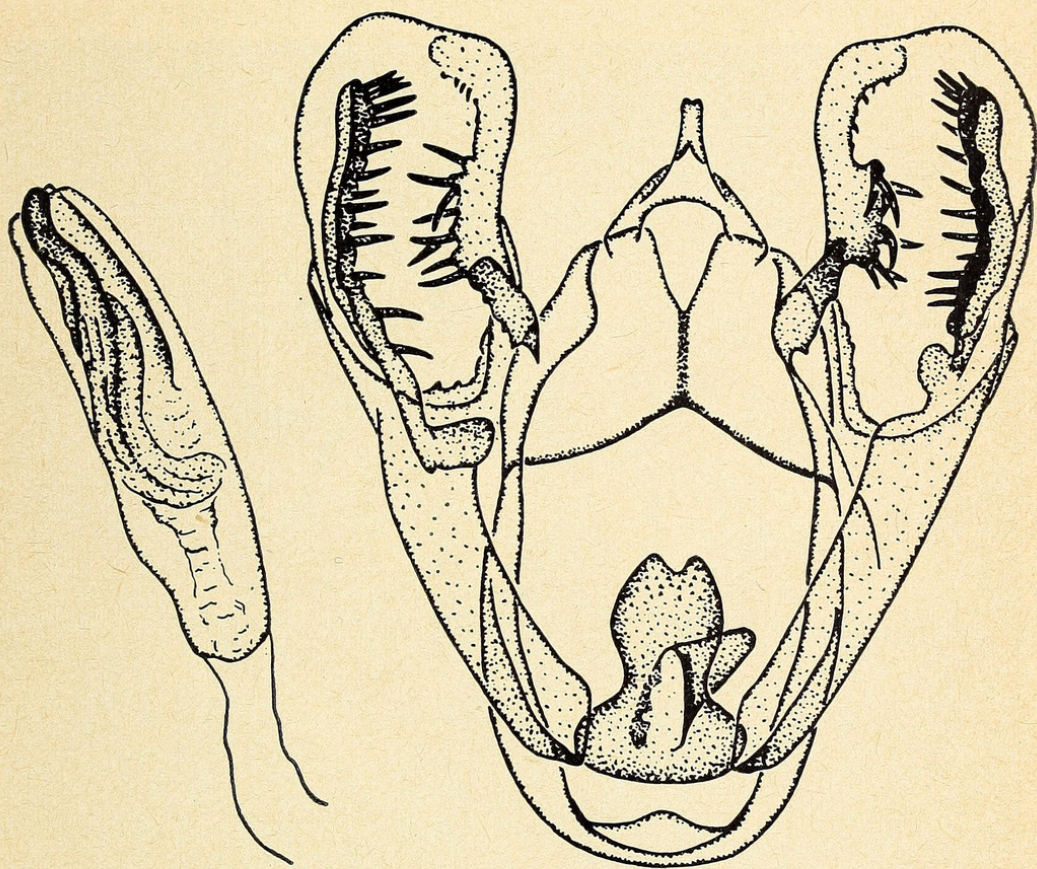
**UPPER SURFACE OF WINGS** Forewings with elongate costal and outer margins, inner margin swollen; ground color dull blackish-gray, all veins

narrowly white except for Sc,  $R_{1+2}$  and  $R_3$ , and with narrow line through discal cell to dc; fovea transparent; fringe shiny, concolorous with wing. Hind wings with m-lc cross vein sharply angled basad; central portion of wing pale buff, encircled by broad outer margin of dull blackish-gray; fringe as on forewings.

**UNDER SURFACE OF WINGS** Forewings dull blackish-gray, with area below cubital vein but not extending to outer margin pale buff; a few white scales on dc. Hind wings dull blackish-gray.

**LENGTH OF FOREWING** 17 mm.

**FEMALE** Unknown.



2. Male genitalia, *Melanchroia venata*, new species.

**MALE GENITALIA** Uncus tapering from base, apical portion attenuate, terminating in two small points; valves with costa sclerotized, having eight, heavy, inwardly directed spines on middle one-third of inner margin; ampulla membranous; saccus broadly sclerotized, continued distally as elongate, sclerotized arm with 14 or 15 heavy spines arising from inner margin; anellus heavily sclerotized, apically bilobed and finely spinose; aedeagus with sclerotized cornutus, having large curve at base and much smaller curve at apex.

**TYPE** Holotype, male, taken in the underbrush on the slopes

of a hill near Milk River Bath, Milk River, Jamaica, June 20, 1936 (Avinoff and Shoumatoff). In the collection of the Carnegie Museum.

This species can be distinguished from *cephise* Stoll and *geometroides* Walker by its more elongate forewings, by the white venation pattern, and by the pale central area of the hind wing. In the male genitalia the elongate uncus and the two areas of elongate spines in the valves are diagnostic.



Rindge, Frederick H. 1961. "A New Species of *Melanchroia* (Lepidoptera, Geometridae) from Jamaica." *Journal of the New York Entomological Society* 69, 142–144.

**View This Item Online:** <https://www.biodiversitylibrary.org/item/206365>

**Permalink:** <https://www.biodiversitylibrary.org/partpdf/179776>

#### **Holding Institution**

Smithsonian Libraries and Archives

#### **Sponsored by**

Biodiversity Heritage Library

#### **Copyright & Reuse**

Copyright Status: In Copyright. Digitized with the permission of the rights holder

Rights Holder: New York Entomological Society

License: <http://creativecommons.org/licenses/by-nc/3.0/>

Rights: <https://www.biodiversitylibrary.org/permissions/>

This document was created from content at the **Biodiversity Heritage Library**, the world's largest open access digital library for biodiversity literature and archives. Visit BHL at <https://www.biodiversitylibrary.org>.