

Fig. 4. Inter-orbital space in A: Male;
B: Female compared

TABLE 1
COMPARISON OF MORPHOMETRY IN MALES AND
FEMALES OF *PRIACANTHUS HAMRUR*
CUV. & VAL.

Male	Female
1. Ave. total length 20.57 cm	Ave. total length 26.3 cm
2. Ave. head length 5.1 cm	Ave. head length 6.13 cm
3. Ave. caudal peduncle length 2.26 cm	Ave. caudal peduncle length 7.71 cm
4. Ave. max. width 5.67 cm	Ave. max. width 7.26 cm
5. Ave. total wt. 101.07 gm	Ave. total wt. 215.8 gm

ACKNOWLEDGEMENT

We thank Rev. Fr. Jose Chittilappilly C.M.I., Principal, Christ College, Irinjalakkuda, Kerala for permission to work in the Zoology department and Mr. Xavier Thanipilly, Marine Exporter, Munampum for procuring the fishes from Munampum Harbour.

September 4, 1997

TESSY J. MANDY

INASU N.D.

Department of Zoology

Christ College, Irinjalakkuda.

Kerala-680 125

REFERENCES

- FISCHER, W (1974): "Eastern Indian Ocean and Western Central Pacific". Fish identifying sheets (FAO).
 DAY, F. (1958): Fishes of India. William Dawson & Sons Ltd. London, Pls CXCXV.
 INASU, N.D. (1993): Sexual dimorphism of a freshwater puffer fish, *Tetraodon travancoricus* Hora & Nair, collected from Trichur district. Central Kerala. *J. Bombay nat. Hist. Soc.* 90 (3): 523-524.
 THOBIAS, M.P. (1974): Observations on the morphological variations in *Puntius filamentosus* (Val.), family Cyprinidae with a redescription of the species. *Journ. Inland Fish. Soc. India*: 45-50.

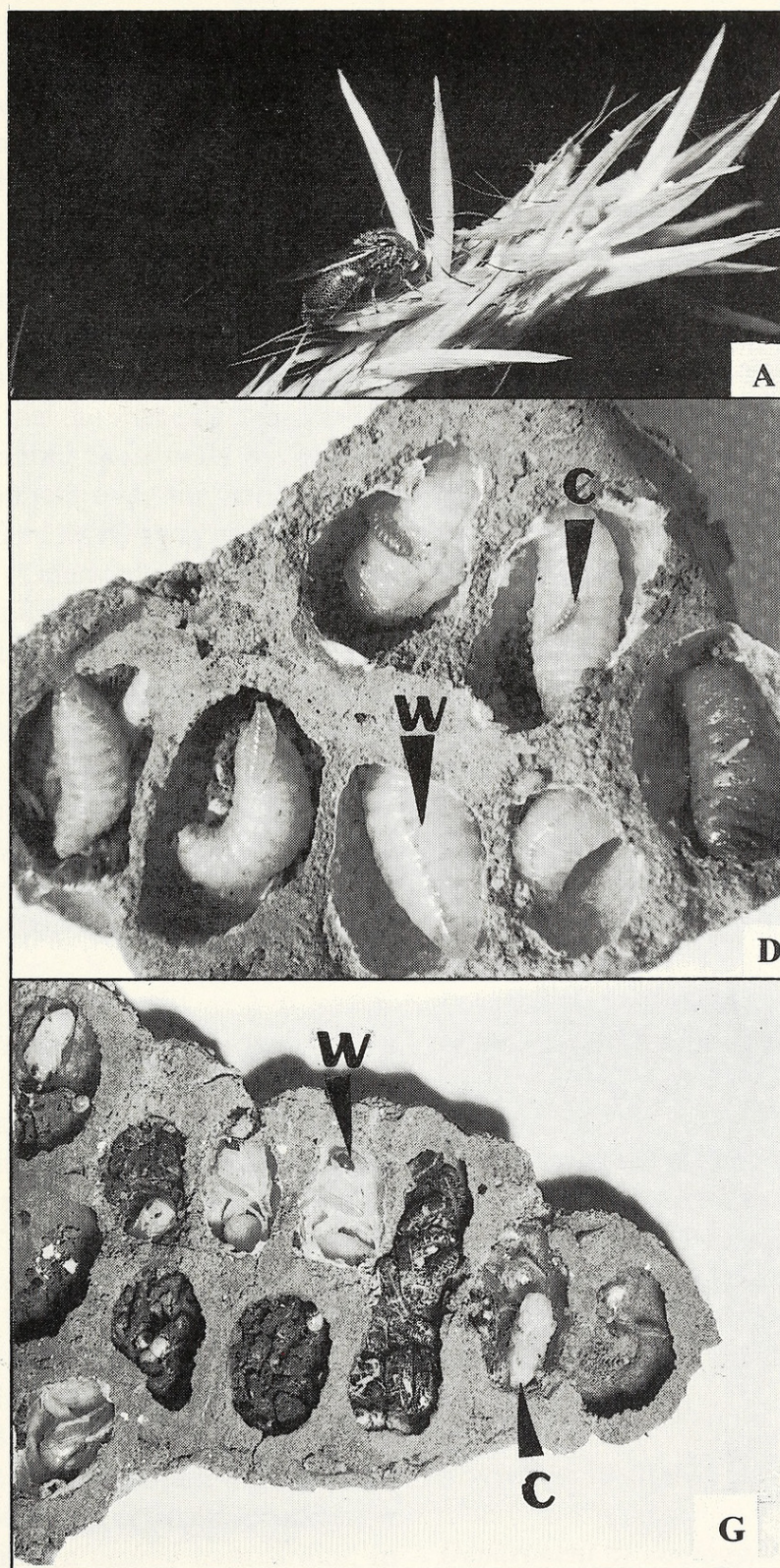
28. BIOLOGY OF THE PARASITIC WASP *STILBUM CYANURUM* VAR. *SPLENDEUS* FABR. (CHRYSIDIDAE: HYMENOPTERA)

(With one plate)

The chrysidid wasps *Stilbum cyanurum* var. *splendeus* Fabr. are metallic greenish blue in colour, seen during bright sunshine, and are parasitoids on mud-dauber wasp grubs of the families Eumenidae and Sphecidae. These chrysidid females bore holes on the mud-dauber nest surface into the cells with their long ovipositor and deposit an egg in each cell. After hatching, the chrysidid larva feeds on the well developed wasp grub and pupates at one end of

the host cell. The adult chrysidid emerges by gnawing holes at the sides of the cell.

The chrysidid wasps *Stilbum cyanurum* var. *splendeus* Fabr. are solitary or found in groups on vegetation (Pl. 1A). They are always seen hovering over areas where mud-dauber wasps of the family Eumenidae and Sphecidae, especially the mud cell builders such as *Eumenes conica* Fabr., *E. edwardsii* Sauss., *Sceliphron madraspatanam* Fabr., *S. intrudens* Smith., build



A: The female adult chrysidid resting on *Panicum* sp. grass during night;
D: The parasitoid chrysidid grub feeding on the Eumenid grubs in several cells of a nest. C-small chrysidid grub w-wasp grub; G: Eumenid wasp cell nest showing both the chrysidid pupa and the wasp pupa. W - Wasp pupa, C - Chrysidid pupa



Srinivasan, G, Sasikala, K., and Mohanasundaram, M. 1998. "Biology of the parasitic wasp *Stilbum cyanurum* var. *splendeus* Fabr. (Chrysididae: Hymenoptera)." *The journal of the Bombay Natural History Society* 95, 134–136.

View This Item Online: <https://www.biodiversitylibrary.org/item/189682>

Permalink: <https://www.biodiversitylibrary.org/partpdf/155907>

Holding Institution

Smithsonian Libraries and Archives

Sponsored by

Biodiversity Heritage Library

Copyright & Reuse

Copyright Status: In Copyright. Digitized with the permission of the rights holder

License: <http://creativecommons.org/licenses/by-nc/3.0/>

Rights: <https://www.biodiversitylibrary.org/permissions/>

This document was created from content at the **Biodiversity Heritage Library**, the world's largest open access digital library for biodiversity literature and archives. Visit BHL at <https://www.biodiversitylibrary.org>.