

NEW SPECIES OF THERIDIIDÆ.

BY NATHAN BANKS, EAST FALLS CHURCH, VA.

Theridium pictulum, n. sp.—Cephalothorax brown on sides, pale in middle, but the pale contains a large goblet-shaped dark mark. Abdomen black on base, with a median projection, followed by a narrow whitish-mottled folium, margined with black, the black of base extends on sides downward to the venter, enclosing a white spot on each anterior side. Sides of abdomen white, more or less mottled with brown, spinnerets surrounded with black, venter blackish, with a prominent median sub-triangular snow-white mark, sternum brown. Legs white, with many black bands; femora i and ii with a narrow mark below before middle, a broader one above at middle, a sub-apical ring, and a narrow apical mark; patella with sub-apical mark; tibia with basal, median, sub-apical and apical marks, none complete rings; metatarsus with basal, median and apical bands; tarsus with median band. Legs iii and iv less marked, the femora with sub-apical ring and apical mark; patella with apical mark; tibia with median and apical bands; metatarsus with basal, median and apical bands; tarsus with median band. Tibia i barely shorter than the metatarsus i. Length, ♀, 3 mm.

From Palo Alto, Calif. (Coolidge).

Theridium interruptum, n. sp.—Cephalothorax with a dark margin on the side, rest yellowish-brown; abdomen grayish, with silvery-white spots and black marks as follows: a narrow stripe each side on anterior part, on posterior part a much broader stripe each side, with obliquely-pointed bases, and extending down on sides of abdomen behind; the sides at base and near middle are also black; venter pale, with a broad black band across middle, but not reaching the sides; sternum pale, narrowly margined with black. Femora, patellæ and tibiæ of legs i and iv blackened at tip, other legs less distinctly so. Abdomen rather elongate, not much wider than cephalothorax, and somewhat flattened, truncate at base, rounded at tip, region of epigynum swollen. (Fig. 9.)

Length, 1.3 mm.; leg i, 2.4 mm.

Miami, Florida, Feb. 16, under boards on the ground (Prof. J. H. Comstock).

June, 1908

EURYOPIS: Table of Species.

1. Posterior dorsum of abdomen mostly silvery-white.....3.
Entire dorsum mostly black, only a few small silvery spots, no bands on legs.....2.
2. With four or five silvery spots; legs with black line under femora*5-maculata*.
With six or ten silvery spots; legs without black line*argentata*.
3. Tibia and metatarsus brownish, and without bands; abdomen silvery, with narrow median black stripe.....*formosa*.
Tibia and metatarsus yellowish, banded with black.....4.
4. Cephalothorax and sternum yellowish.....6.
Cephalothorax and sternum dark brown.....5.
5. Dorsal silvery mark extends around base; marks on legs fine and much broken up.....*scriptipes*.
Dorsal silvery mark not around base; marks on legs in form of distinct rings*funnebris*.
6. Legs heavily marked with fine black lines; venter silvery. *Californica*.
Legs only slightly marked with black; venter brownish.....*Texana*.

Euryopsis argentata, Emer.—This species occurs in the Atlantic Coast States.

Euryopsis 5-maculata, Banks.—I have seen this only from the vicinity of Washington, D. C.

Euryopsis scriptipes, n. sp.—Cephalothorax a uniform brown, eyes on black spots; abdomen black, with a silvery-white mark around on upper sides, barely or just meeting on base in front, very broad behind, and enclosing a black heart-shaped dorsal mark; sometimes the white is broader and the black is smaller and indented on its sides; venter black in middle, sides silvery, sternum black, coxæ tipped with black, the spinnerets surrounded with black; legs yellowish, densely marked with small transverse black marks, those at apex of joints heavier and forming rings, the tarsi barely, if at all, marked, the femora but little marked above; the tarsus of male palpus black, in the female the other joints marked with black. Eyes and other structure as in *E. funnebris*, and size the same.

Specimens from Colorado (Osler); Pecos and Beulah, New Mexico (Cockerell).

Euryopsis Californica, Banks.—This species I have seen only from California.

Euryopsis funebris, Hentz.—This species is widely distributed in the Eastern States, and also in Canada.

Euryopsis Texana, n. sp.—Cephalothorax yellowish or yellowish-brown, eyes on black; abdomen mostly silvery-white, with a brown-triangular mark on middle of anterior part, narrowly bordered on sides and behind with black; venter brownish, sternum yellowish, legs yellowish, slightly marked with black at tips of joints and a few scattered dots elsewhere, mostly at bases of bristles; mandibles and palpi pale yellowish. Rather smaller than *E. funebris*.

Brazos Co., Texas.

Euryopsis formosa, n. sp.—Cephalothorax uniform yellowish-brown; abdomen silvery-white, with a narrow median black stripe, constricted near middle and pointed at tip; venter brown in middle, a silvery lunule behind, black around the spinnerets and extending forward each side as a narrow line on the sides; sternum yellowish-brown; femora yellowish, beneath with bands of brown; apex brown; patellæ, tibiæ and metatarsi wholly reddish-brown; tarsi paler; femur of palpus yellowish, rest reddish-brown. Size and structure similar to *E. funebris*.

From Bear, Idaho (L. M. Cockerell).

Argyroides rostratus, n. sp.—Cephalothorax brown, or yellowish-brown; eye region black; legs pale yellow; the patellæ and tips of the tibiæ yellowish-brown; sternum brown; abdomen bright silvery above, brown beneath, with a small silvery spot each side; a narrow median black stripe on dorsum from base two-thirds of way to tip; extreme tip with small brown spot. A. M. E. large, more than diameter apart; P. M. E. smaller, more than two diameters apart. Femur i nearly as long as abdomen. Abdomen triangular in side view, prolonged above behind, the tip bluntly rounded, as high behind as long. In the male the abdomen is more rounded at tip above; the eye region is elevated into a prominent hump, bearing the P. M. E. above and the A. M. E. in front, while on the clypeus there is a porrect, rather knob-like projection. (Fig. 9.)

Length, ♀, 2.2 mm.; ♂, 2 mm.; femur i, 1.5 mm.

From Runnymede and Miami, Florida (the latter from Prof. Comstock).

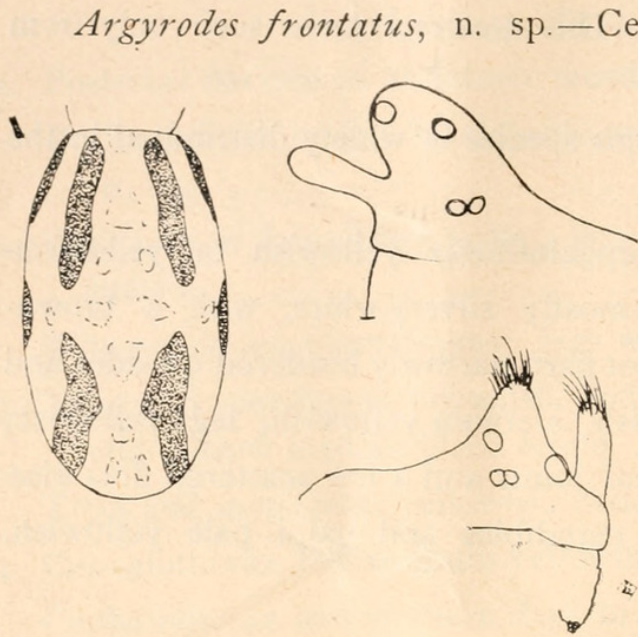


FIG. 9.—*Theridium interruptum*: dorsum of abdomen (on left); *Argyrodes rostratus*: head of male (upper right hand); *Argyrodes frontatus*: head of male (lower right hand).

Argyrodes frontatus, n. sp.—Cephalothorax yellowish, a median blackish mark behind eyes and on the sides; legs pale, tips of joints blackish; sternum pale; abdomen grayish or silvery, densely marked with blackish spots, mostly on the sides; above is a narrow median black stripe from base two-thirds of the way to tip; venter pale. A. M. E. large, about diameter apart; P. M. E. smaller, more than two diameters apart. Femur i as long as abdomen, the latter conically extended above behind, in side view it is triangular, the tip

is rather broad and very plainly emarginate. Abdomen of male less extended above, but also emarginate at tip. The head of male has two short median processes; one on clypeus extending upward, and one above M. E., both bearing stiff hairs at tips. (Fig. 9.)

Length, ♀, 3.1 mm.; ♂, 2.7 mm.; femur i, ♀, 2.4 mm.

From Ocean Springs, Miss., Jan. (Prof. Comstock.)

Argyrodes decorus, n. sp.—Cephalothorax dark brown; palpi mostly black; legs yellowish, marked with dark brown on black; femora i brown, leaving only a pale streak each side at base; patella brown, except above; tibia brown on apical third, shading off into pale; tip of metatarsus dark; leg ii similar, but with less dark; leg iii mostly pale, only dark at tips of joints; iv mostly pale, but dark on outside of femur. Abdomen with a broad black stripe above, from base to tip, with a cross-bar somewhat before the tip; venter black, the black extending up each side above spinnerets; the abdomen behind, parts of the sides and above are silvery, or with some golden colour. Cephalothorax quite flat, head but little elevated; A. M. E. large, about one and a half diameter apart, and as far from the smaller S. E.; P. M. E. scarcely two diameters apart; femur i longer than abdomen, the latter greatly prolonged above behind, so that the posterior side is twice as long as the venter; tip rounded.

Length of ♀, 3.2 mm.; height of abdomen, 3.3 mm.; length of femur i, 2.9 mm.

From San Pedro, California.



Banks, Nathan. 1908. "New species of Theridiidae." *The Canadian entomologist* 40, 205–208. <https://doi.org/10.4039/Ent40205-6>.

View This Item Online: <https://www.biodiversitylibrary.org/item/22229>

DOI: <https://doi.org/10.4039/Ent40205-6>

Permalink: <https://www.biodiversitylibrary.org/partpdf/14834>

Holding Institution

MBLWHOI Library

Sponsored by

MBLWHOI Library

Copyright & Reuse

Copyright Status: NOT_IN_COPYRIGHT

This document was created from content at the **Biodiversity Heritage Library**, the world's largest open access digital library for biodiversity literature and archives. Visit BHL at <https://www.biodiversitylibrary.org>.