

## Calendar of Events

### July

July 1 — 9:00 a.m. to 4:00 p.m.  
Gift Shop Sale begins

July 1-3 — Sat. 1:00 p.m. to 5:00 p.m.;  
Sun. 9:00 a.m. to 4:00 p.m.  
Cactus and Succulent Show  
Cactus and Succulent Society  
of America

July 19 — 4:00 p.m.  
Foundation Executive Committee  
Meeting, Seminar Room

July 30-31 — Sat. 1:00 p.m. to 5:00 p.m.;  
Sun. 9:00 a.m. to 4:00 p.m.  
Begonia Show  
San Gabriel Valley Begonia Society

### August

August 6-14 — 9:00 a.m. to 4:30 p.m.  
Art Show  
Mid Valley Art League

August 16 — 4:00 P.M.  
Foundation Board of Trustees  
Meeting, Seminar Room

August 20-21 — 9:00 a.m. to 4:30 p.m.  
Cactus and Succulent Show  
Los Angeles, Long Beach and San  
Gabriel Valley Cactus and  
Succulent Societies

August 20 — 6:00 p.m. Picnic  
Summer Picnic and Concert  
featuring Louise Mandrell  
8:00 p.m. Concert

### September

September 3-5 — 9:00 a.m. to 4:30 p.m.  
Fern Show  
Los Angeles International  
Fern Society

September 8 — 10:00 a.m. to 3:00 p.m.  
Open House for Prospective  
Volunteers, Lecture Hall Room B

September 13 — 9:30 a.m.  
Orientation Provisional Volunteers

September 15 — 9:30 a.m.  
Orientation Provisional Volunteers

September 20 — 4:00 p.m.  
Foundation Executive Committee,  
Seminar Room

September 24-25 — 9:00 a.m. to  
4:30 p.m.  
Bonsai Show  
Akebono Bonsai Society

September 27  
Field Leader Training Begins

### October

October 13 — Evening  
Los Angeles Garden Show  
Preview Party  
California Arboretum Foundation

October 14-23 — 10:00 a.m. daily  
Los Angeles Garden Show  
Southern California Plant Industry

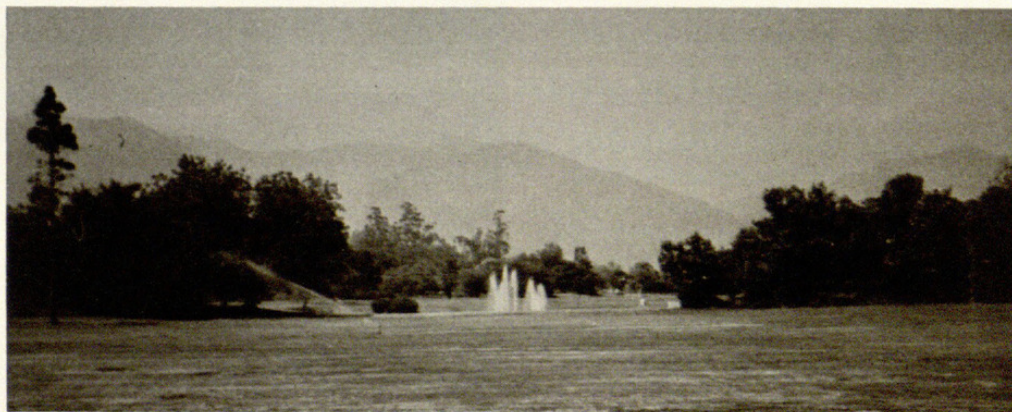
October 18 — 4:00 p.m.  
Foundation Board of Trustees  
Meeting, Seminar Room

### Save the date

Saturday, November 12  
Sunday, November 13  
Christmas Open House  
at the Gift Shop

## 1988 Summer Concert Planned

Country and Western singer Louise Mandrell will be the star of the 1988 Summer Concert on Saturday evening, August 20. Co-sponsored by the California Arboretum Foundation and the Arcadia Chamber of Commerce, the performance will take place on the grounds of the Arboretum. The evening will begin with a "Picnic in the Park," a competition for the best picnic setting, from 6:00 to 8:00 P.M. Bring your own picnic supper and join the fun of the contest! The concert will begin at 8:00 following the picnic. Tickets at \$15 per person, may be purchased at the CAF Office, the Arcadia Chamber of Commerce Office at 388 West Huntington Drive, and at Hinshaw's Department Store, Arcadia. Come enjoy an evening under the stars and support the Arboretum!



*Concert guests will enjoy an evening on the lawn facing the Bauer pool and the mountains.*

### Louise Mandrell Concert Advance Ticket Sales

Name \_\_\_\_\_ Phone \_\_\_\_\_

Address \_\_\_\_\_

I would like to reserve \_\_\_\_\_ tickets at \$15 each. VISA/MASTERCARD \_\_\_\_\_

Enclosed is my check for \$ \_\_\_\_\_ Signature \_\_\_\_\_ Exp \_\_\_\_\_



1988. "1988 Summer concert planned." *News* 1988:summer, 5.

**View This Item Online:** <https://www.biodiversitylibrary.org/item/161966>

**Permalink:** <https://www.biodiversitylibrary.org/partpdf/148282>

**Holding Institution**

Missouri Botanical Garden, Peter H. Raven Library

**Sponsored by**

Los Angeles Arboretum

**Copyright & Reuse**

Copyright Status: In copyright. Digitized with the permission of the rights holder.

License: <http://creativecommons.org/licenses/by-nc-sa/3.0/>

Rights: <https://www.biodiversitylibrary.org/permissions>

This document was created from content at the **Biodiversity Heritage Library**, the world's largest open access digital library for biodiversity literature and archives. Visit BHL at <https://www.biodiversitylibrary.org>.