

AND FINALLY JUNE the day lilies in colors from yellow, orange, pink and red.... our white flowering Jacaranda acutifolia believed to be the only ones of their kind in North America.... our original eleven cuttings came from the Estacion Experimental Agricultura de la Molina, Lima Peru.... the scarlet Wisteria tree (Daubentonia tripetii).... and the collection of Callistemons continued to furnish color and interest for the visitor.

## Plant

A HANDSOME NEW GROUND COVER IS READY FOR RELEASE BY THE ARBORETUM....

FROM THE UNION OF SOUTH AFRICA, OSTEOSPERMUM FRUTICOSUM IS MADE

AVAILABLE TO NURSERYMEN.... IN ITS HOME LAND IT IS CALLED THE NAUVE

OR WHITE DAISY BUSH.... BUT IT IS NOT A BUSH, BUT A GROUND COVER

SIX TO EIGHT INCHES HIGH.... THE TWO-INCH FLOWERS OPEN A ROSY

LAVENDER, TURNING TO NEARLY PURE WHITE AS THEY AGE.... THE FOLIAGE

IS ATTRACTIVE THE YEAR ROUND, PLANTS BLOOM IN THE WINTER....IN

SOUTH AFRICA THIS PLANT STANDS 15 deg. F., AND OUR EXPERIENCE

INDICATES THAT IT SHOULD BE HARDY HERE.... THE STEMS ROOT INTO

THE SOIL EVERY FEW INCHES AND QUICKLY COVER A VERY LARGE AREA....

IT IS ALSO GOOD FOR SMOOTHING OUT WEEDS.... THE ARBORETUM WILL

SUPPLY WELL ROOTED CUTTINGS OF OSTEOSPERMUM FRUTICOSUM IN UNITS

OF 25 CUTTINGS AT A COST OF \$2.50 PER UNIT. THERE WILL BE A

LIMIT OF ONE UNIT PER NURSERY....

THUS THE ARBORETUM IS BEGINNING TO RELEASE

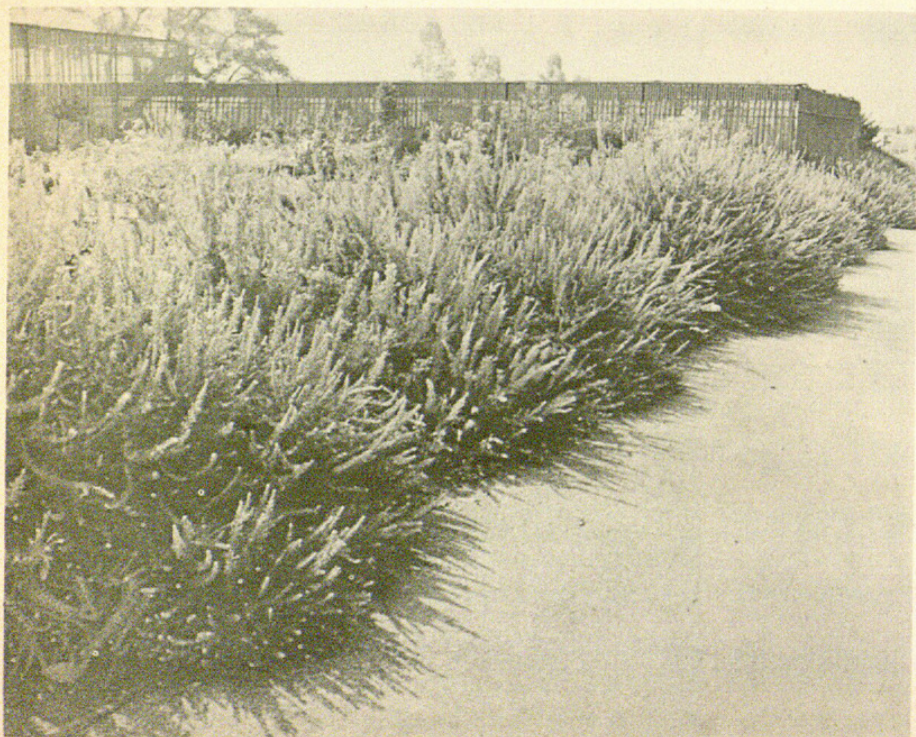
TESTED PLANT MATERIALS TO THE TRADE.... THE PUBLIC WILL

SOON ENJOY NEW PLANTS FOR THEIR GARDENS....





A PORTION OF THE LATHHOUSE AND NURSERY WHERE GREVILLIA LANIGERA - AN AUSTRALIAN NATIVE - IS USED AS A BORDER PLANTING....



A MORE INTIMATE VIEW OF G. LANIGERA. PLANTED ON A SHOULDER SLOPE, THE PLANTS ARE APPROXIMATELY 3 FEET HIGH. SMALL, RED FLOWERS FROM LATE FALL CONTRAST WELL WITH THE GREEN FOLIAGE.





ABOVE: A YOUNG TREE OF CHORISIA SPECIOSA.... GREEN BARK, SPINY TRUNK, BRIGHT GREEN LEAVES.



THE FLOWER OF C. SPECIOSA MEASURES 4-5 INCHES ACROSS, PALE ORCHID TO ORCHID IN COLOR. AN EXOTIC OF MUCH PROMISE FOR SOUTHERN CALIFORNIA.





DISTRICT 12 OF CALIFORNIA GARDEN CLUBS, INC.  
SPONSORED TWO STANDARD FLOWER SHOWS ---  
NOVEMBER 23 AND MAY 10..... "EAST MEETS  
WEST" WAS THE THEME OF THE FORMER; THE  
LATTER FEATURED "FROM THE MOUNTAINS TO THE  
SEA"..... THE SHOWS BROUGHT OUT SOME  
INTERESTING INOVATIONS OF A LADY'S STANDARD  
HEAD PIECE!

INDIVIDUAL ENTRIES OF  
FLOWER ARRANGEMENTS  
EXHIBITED IN THE LECTURE  
ROOM OF THE ADMINISTRATION  
BLDG. DURING THE FLOWER  
SHOW.



AN IDEA CERTAIN OF SUCCESS  
WITH 'SMALL FRY' GARDENERS  
WERE THE SEED MOSAICS ENTERED  
IN THE JUNIOR DIVISION OF  
THE FLOWER SHOWS.





THE ARBORETUM IN COOPERATION WITH THE LOS ANGELES CHAMBER OF COMMERCE, MAINTAINES THIS LARGE INDOOR PLANTER IN THEIR BUILDING. COLORFUL FLOWERING PLANTS ARE CHANGED WITH THE SEASON.

## *Plant Identification And Records*

To many readers of annual reports, this portion of the Horticultural Section may lack the interest and 'color' of the previous sections.... THIS IS UNFORTUNATE.... FOR.... THROUGH THIS SECTION PASS ALL THE PLANT MATERIAL WHICH ENTERS OR LEAVES THE ARBORETUM.... Let's examine the "inventory" for this year....





1958. "Plant specials." *LASCA miscellanea* 1958, 22–26.

**View This Item Online:** <https://www.biodiversitylibrary.org/item/138033>

**Permalink:** <https://www.biodiversitylibrary.org/partpdf/147084>

**Holding Institution**

The Arboretum Library at the Los Angeles County Arboretum and Botanic Garden

**Sponsored by**

Good Family Foundation

**Copyright & Reuse**

Copyright Status: In copyright. Digitized with the permission of the rights holder.

License: <http://creativecommons.org/licenses/by-nc-sa/3.0/>

Rights: <https://biodiversitylibrary.org/permissions>

This document was created from content at the **Biodiversity Heritage Library**, the world's largest open access digital library for biodiversity literature and archives. Visit BHL at <https://www.biodiversitylibrary.org>.