

Horticulture

Garden Section

Plant Specimens

Flower Show

Plant Records

Weather

Plants make an Arboretum. The Chief Horticulturist, the Arboretum Gardeners and their helpers cannot be credited sufficiently in this report for the excellence of their sections. This brief review can only high-light their endeavors.

PATRONAGE OF THE BIBLICAL GARDEN atop Tallac Knoll increased this year.... approximately 150 plants mentioned in the Bible are now growing in this Garden a few of the more interesting and most mature species are: Zizyphus spinacrista, or the "Crown of Thorns" bush; Cedrus lebanii, the true Cedar of Lebanon; Ficus sycamorus, the sycamore mentioned in Luke 19:4; Cyperus papyrus, the Egyptian bulrush used in hiding Moses; Olea europaea, the Biblical olive tree; Pinus halepensis, the Aleppo pine, mentioned in the Bible as firwood; and Narcissus tazetta, called daffodil in the Bible.... seed source for these plants has been Israel and other Biblical related countries of the Mediterranean.

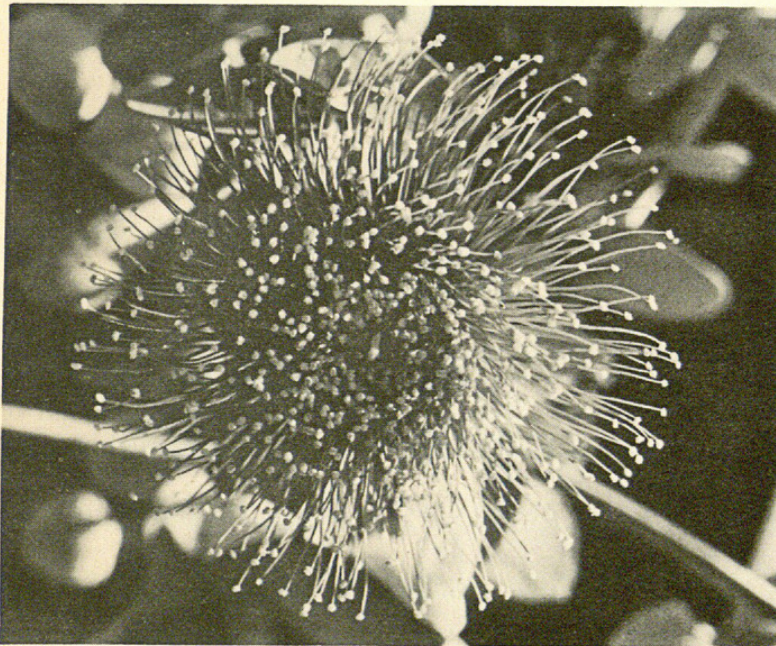
A NOTE ON OTHER SEED AND PLANT EXCHANGES....
SINCE 1949, THE ARBORETUM HAS BUILT UP A
RECIPROCAL TRADE ARRANGEMENT WITH APPROX-
IMATELY 175 BOTANICAL GARDENS THROUGHOUT
THE WORLD.

THE ANTELOPE VALLEY TEST STATION OF THE
ARBORETUM STARTED A YEAR AGO IN MAY, NOW
INCLUDES 500 PLANTS UNDER TEST.... 100
OF THESE PLANTS ARE NEW SPECIES TO THE AREA.

THE PERENNIAL DISPLAY GARDEN truly added color to the fall scene....here was fresh color, not the farewell of a summer past.... 40 species and varieties of Chrysanthemums, totaling 1,100 plants produced colors of white, pink, scarlet, yellow and on into the copper tones.

IN EARLY DECEMBER.... Sturt's Desert Pea (Clianthus speciosa) in the Australian Section displaying large, brilliant red flowers against gray foliage. Eucalyptus rhodantha of silver gray branch and leaf, in full bloom of bright red flowers, 3 inches in diameter.... 125 species of Acacias beginning to flower.

Most striking in the South American Section was Cassia splendida, bearing clusters of large, deep yellow flowers.... Thea sinensis, commercial source of Pekow tea, could be seen bearing cream yellow camellia-like flowers.... the neighboring city of Pasadena's gift, an Arabian coffee tree set a great quantity of fruit.... as an attraction at the Gatehouse, the public expressed interest and verbal curiosity about this plant whose product is closely associated with breakfast, the world over.



THE FLOWER (RED FILAMENTS AND
YELLOW POLLEN SACS - NO PETALS)
OF EUCALYPTUS RHODANTHA.

SPRING CAME FIRST to the South African Section with bold, gay colors.... the "daisies" caught the eye: Euryops, Dimorphotheca, Gazania, Felicia and Ursinia. South African bulbs, ground covers, succulents, shrubs and trees each in turn added more color to delight the plant fancier....

AS THE SEASON lengthened and the days became warmer, the visitor could wander further among blooms.... 30 varieties of Azaleas were to be seen in bloom on the north slope of Tallac Knoll.... Camellias of the



CASSIA SPLENDIDA MAKES
A SHRUB-TREE IN THE SOUTH
AMERICAN SECTION. THE
FLOWERS ARE YELLOW-GOLD.

reticulata and japonica species also grace this hillside.... Hibiscus huegeli, the Blue Hibiscus of Australia was another color attraction.... flowering plums, Prunus blirieana, in the Herb Garden added a light, delicate pink cloud of flowers.... rock work on both the north and south borders of the Herb Garden were completed.... the south rockwall fronts the coming Fragrance Garden for the sightless....

CASSIA NAIROBENSIS FROM
SOUTH AFRICA. RICH
YELLOW FLOWERS AND DEEP
JUNGLE GREEN LEAVES.
FLOWERS SMELL LIKE FRESH
POPCORN.





A CLASS OF CHILDREN
LEARN THAT, 'THAT
PINE TREE' ---

AURACARIA EXCELSA ---
IS NOT A PINE!

THE SOUTH FACING SLOPE
OF TALLAC KNOLL IS
BECOMING OUR DOMESTIC
FRUIT AND NUT TREE
EXHIBIT AREA. THIS
SEEDLING AVOCADO
COLLECTION IS BEING
PROTECTED FROM HOT
SUN BY PALM FRONDS.

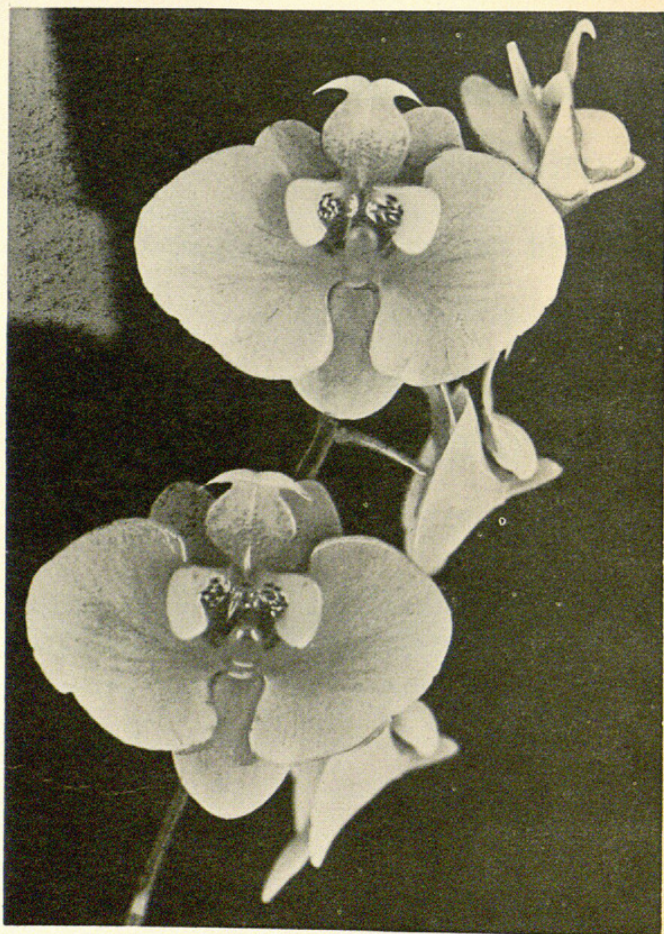


IN APRIL, as the visitor drives along the street which fronts the Arboretum he is treated to the blaze of color from 10 species of ice plant flowers (*Mesembryanthemum*). Our original seed came from the South Africa National Botanic Garden in Kirstenbosch.... also along Baldwin Avenue, one finds Puya spathecea with its red, four-foot tall spike bearing green flowers....



PLANTED FOUR YEARS AGO, SINOCALMUS
OLDHAMI (GIANT BAMBOO) EFFECTIVELY
SCREENS THE HIGHWAY FROM VIEW AND
HUSHES THE TRAFFIC NOISE WHICH OTHER-
WISE INVADES THE PEACE OF THE GROUNDS.

THE ORCHID GROWERS ARE SWINGING THEIR
INTEREST AND EFFORTS TO SUCH BLOOMS AS
PHALANOPSIS SHILLERIANA. THE ARBORETUM'S
ORCHID COLLECTION HAS MORE THAN DOUBLED
THIS YEAR, IN QUANTITY AND QUALITY.



EACH CHRISTMAS, THE ARBORETUM'S 'LIVING'
GREETING IS THE NIGHTLY LIGHTED AND STAR
TOPPED SETTING OF PHOENIX RECLINATA.

AND FINALLY JUNE the day lilies in colors from yellow, orange, pink and red.... our white flowering Jacaranda acutifolia believed to be the only ones of their kind in North America.... our original eleven cuttings came from the Estacion Experimental Agricultura de la Molina, Lima Peru.... the scarlet Wisteria tree (Daubentonia tripetii).... and the collection of Callistemons continued to furnish color and interest for the visitor.

Plant

A HANDSOME NEW GROUND COVER IS READY FOR RELEASE BY THE ARBORETUM....

FROM THE UNION OF SOUTH AFRICA, OSTEOSPERMUM FRUTICOSUM IS MADE

AVAILABLE TO NURSERYMEN.... IN ITS HOME LAND IT IS CALLED THE NAUVE

OR WHITE DAISY BUSH.... BUT IT IS NOT A BUSH, BUT A GROUND COVER

SIX TO EIGHT INCHES HIGH.... THE TWO-INCH FLOWERS OPEN A ROSY

LAVENDER, TURNING TO NEARLY PURE WHITE AS THEY AGE.... THE FOLIAGE

IS ATTRACTIVE THE YEAR ROUND, PLANTS BLOOM IN THE WINTER....IN

SOUTH AFRICA THIS PLANT STANDS 15 deg. F., AND OUR EXPERIENCE

INDICATES THAT IT SHOULD BE HARDY HERE.... THE STEMS ROOT INTO

THE SOIL EVERY FEW INCHES AND QUICKLY COVER A VERY LARGE AREA....

IT IS ALSO GOOD FOR SMOOTHING OUT WEEDS.... THE ARBORETUM WILL

SUPPLY WELL ROOTED CUTTINGS OF OSTEOSPERMUM FRUTICOSUM IN UNITS

OF 25 CUTTINGS AT A COST OF \$2.50 PER UNIT. THERE WILL BE A

LIMIT OF ONE UNIT PER NURSERY....

THUS THE ARBORETUM IS BEGINNING TO RELEASE

TESTED PLANT MATERIALS TO THE TRADE.... THE PUBLIC WILL

SOON ENJOY NEW PLANTS FOR THEIR GARDENS....



1958. "Horticulture." *LASCA miscellanea* 1958, 16–22.

View This Item Online: <https://www.biodiversitylibrary.org/item/138033>

Permalink: <https://www.biodiversitylibrary.org/partpdf/147083>

Holding Institution

The Arboretum Library at the Los Angeles County Arboretum and Botanic Garden

Sponsored by

Good Family Foundation

Copyright & Reuse

Copyright Status: In copyright. Digitized with the permission of the rights holder.

License: <http://creativecommons.org/licenses/by-nc-sa/3.0/>

Rights: <https://biodiversitylibrary.org/permissions>

This document was created from content at the **Biodiversity Heritage Library**, the world's largest open access digital library for biodiversity literature and archives. Visit BHL at <https://www.biodiversitylibrary.org>.