

---

# Queen Anne Frolic

---



THE WAXING MOON had not quite risen above the palm trees when the California Arboretum Foundation members and their guests began arriving at the Los Angeles State and County Arboretum for the Queen Anne Frolic on Sept. 16. By the time it was high overhead, the sell-out crowd of more than 800 celebrants were enjoying Director Francis Ching's traditional beef barbeque and rides in horse drawn surreys and antique cars. Costumed cyclists on vintage highwheelers gliding along the paths added to the Victorian atmosphere, and dancing to the music of Kimbi Goltry and the Dick Emmons Orchestra rounded out the evening.

Success of the gala benefit was due mostly to the leadership of the 1983 Queen Anne Frolic Chairman Joan (Mrs. Patrick) Fagan, her co-chairman, Jo Iske, and the long hours of work by the committee chairmen who handled the different facets of the party.

Members of the local business community again this year generously donated cash and a wide variety of the goods and services that added a great deal to the evening's festivities.



*From left, Wendy Minton, Janine Atkinson and Jane Ruddick model gowns from the Arboretum's collection of Baldwin era apparel for the Queen Anne Frolic.*

Photos by William Aplin





*Marilyn (Mrs. John) Llewellyn and Carol (Mrs. Gary) Overturf take a lighthearted approach in their Victorian bathing costumes.*



*California Assemblyman Richard Mountjoy and Dorothy (Mrs. Milton) Murset announce the winning number for the table centerpieces.*







*Jo Iske, Queen Anne Frolic co-chairman and John Shepherd, CAF president survey the capacity crowd. Mrs. Iske handled final details when chairman Joan (Mrs. Patrick) Fagan became ill.*



*Model Janine Atkinson catches a breath of fresh air.*

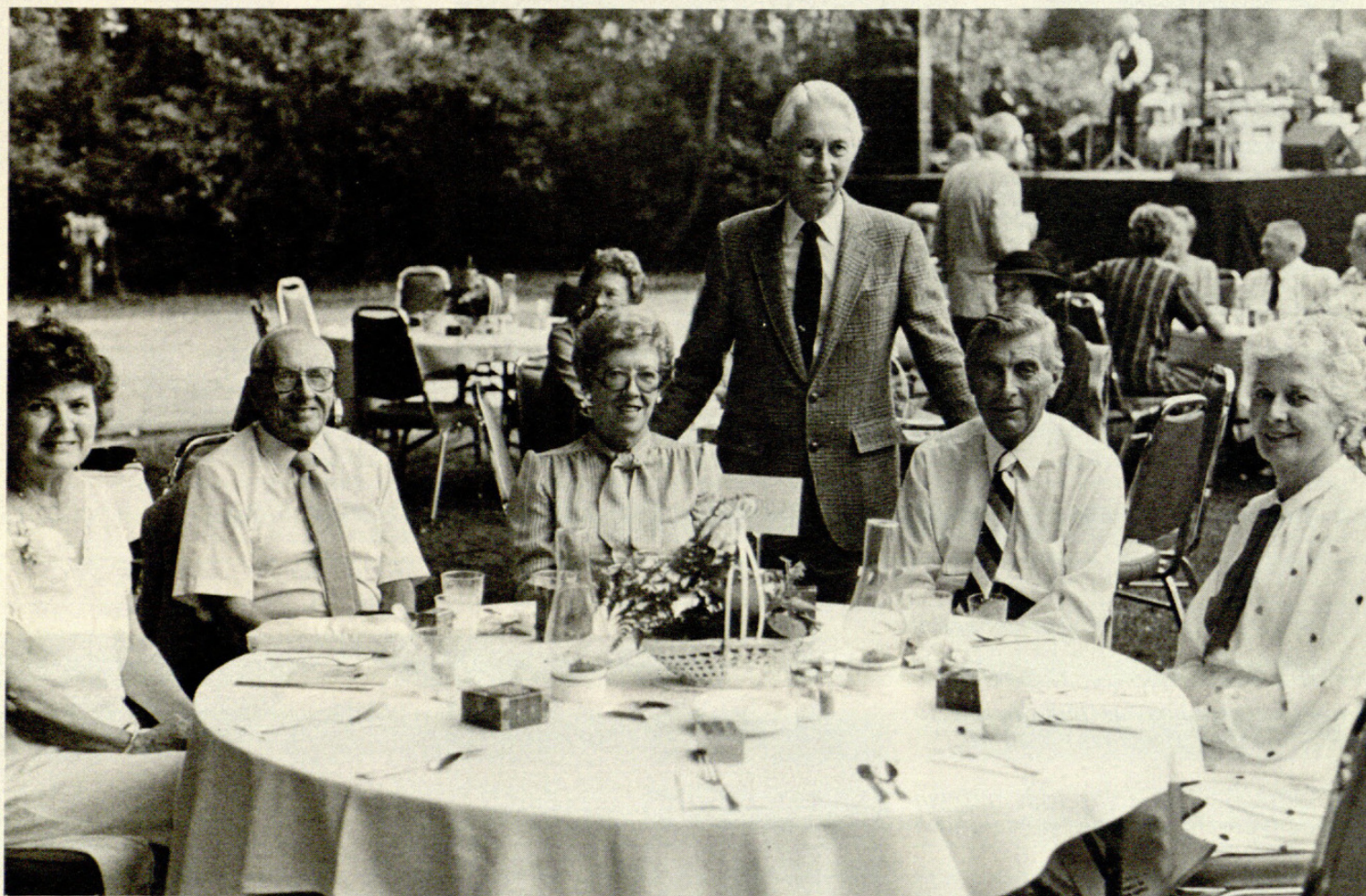
*LEFT Steven Thomas from Vintage Cyclery explains his highwheeler to Robin (Mrs. Benjamin) Stafford.*

*BELOW Guests enjoy trips through the Arboretum in a horse-drawn carriage.*



*Mr. and Mrs. Hugh MacNeil stroll in the warm dusk during the Queen Anne Frolic.*





From left, Mrs. James Curry; Mr. and Mrs. Eugene Walsh; John Shepherd; Mr. Curry; and Mrs. Shepherd gather for the biennial Queen Anne Frolic. Mr. Shepherd is the current president of the California Arboretum Foundation and Mr. Curry is the immediate past-president.

## CALENDAR OF EVENTS

NOVEMBER, DECEMBER 1983  
JANUARY 1984

### LOS ANGELES STATE AND COUNTY ARBORETUM, Arcadia

DECEMBER 3 — 9 a.m. to 4 p.m.

Rare Fruit Show  
California Rare Fruit Growers

DECEMBER 10, 11 — Saturday 1-4:30  
Sunday 9-4:30

Camellia Show  
Southern California Camellia Council

JANUARY 28, 29 — 10 a.m. to 4:30 p.m.

Bonsai Show  
Baikoen Kenkyukai Bonsai Society  
All events sponsored by the  
California Arboretum Foundation

### DESCANSO GARDENS, La Canada

DECEMBER 3 through 11

9:00 a.m. to 5 p.m.

Christmas Show

JANUARY 2 through FEBRUARY 2 —

9 a.m. to 5 p.m.

Membership Art Show

JANUARY 14 — 1 p.m. to 4 p.m.

Rose Pruning Demonstration  
George Lewis and staff  
All events sponsored by the  
Descanso Gardens Guild

### SOUTH COAST BOTANIC GARDEN, Palos Verdes Peninsula

NOVEMBER 5, 6 — 9 a.m. to 5 p.m.

Orchid Show  
South Bay Orchid Society

NOVEMBER 13 — 2 p.m.

Gardens of Japan in Fall Color  
Don Walker

NOVEMBER 20 — 2 p.m.

Talk/Demonstration — A Herb Affaire  
Kirby Davis

NOVEMBER 27 — 2 p.m.

Gardens of the World  
Lorena Bach

DECEMBER 1 — noon to 4 p.m.

Holiday Fashion Show

DECEMBER 2, 3, 4 — 10 a.m. to 4 p.m.

Holiday in the Gardens

JANUARY 15 — noon to 4 p.m.

Fruit tree pruning demonstration  
Ed Hartnagel and staff

JANUARY 28, 29 — Sat. 1 to 4:30 p.m.  
Sun. 9 a.m. to 4:30

Camellia Show  
South Coast Camellia Society  
All events sponsored by the  
South Coast Botanic Garden  
Foundation





1983. "Queen Anne frolic." *Garden* 7(6), 5–8.

**View This Item Online:** <https://www.biodiversitylibrary.org/item/155396>

**Permalink:** <https://www.biodiversitylibrary.org/partpdf/125163>

**Holding Institution**

Missouri Botanical Garden, Peter H. Raven Library

**Sponsored by**

Los Angeles Arboretum

**Copyright & Reuse**

Copyright Status: In copyright. Digitized with the permission of the rights holder.

License: <http://creativecommons.org/licenses/by-nc-sa/3.0/>

Rights: <https://www.biodiversitylibrary.org/permissions>

This document was created from content at the **Biodiversity Heritage Library**, the world's largest open access digital library for biodiversity literature and archives. Visit BHL at <https://www.biodiversitylibrary.org>.