

Lasca Leaves



Los Angeles County Department of Arboreta and Botanic Gardens

GARDEN SHOW 1982

THE BANNERS were yet to be unfurled and the luminarias lit when GARDEN SHOW 1982 opened Oct. 31 for about 2,000 California Arboretum Foundation members and their guests. But by the time dusk settled, the final candle and the last flower had been put in place. Exhibitors had worked steadily during the previous week transforming the Hall of Environmental Education into the Hall of Flowers and the adjacent lawn into 20 garden vignettes decorated with fountains, latticework and statues.

Even frequent visitors had trouble recognizing the show area as part of the familiar Arboretum grounds. The biggest surprise, however, was the small hill that had risen near the entrance to the show. Throughout the nine-day exhibition, visitors followed the walkway up the paved slope and across the medieval-style bridge, complete with colored timbers and fluttering banners, that illustrated the show theme, "A Bridge to Better Gardening."

Bill and Helen Short won the Best of Show award in the display competition with a fantasy landscape of exotic ferns and tropical plants they had grown as a hobby. Judges were Joe Williamson, man-



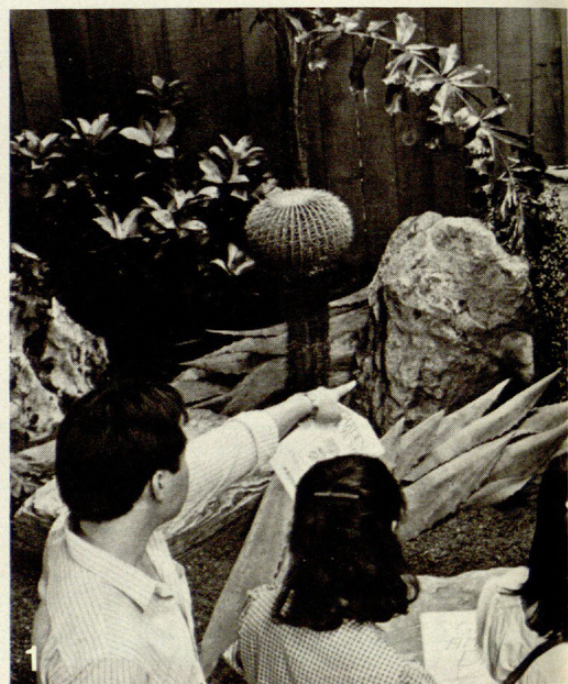
From left, Cliff Comstock, chairman of the Steering Committee, and Robert H. Kawashima guide the 1983 Rose Queen and her court around the Garden Show 1982.

GARDEN SHOW

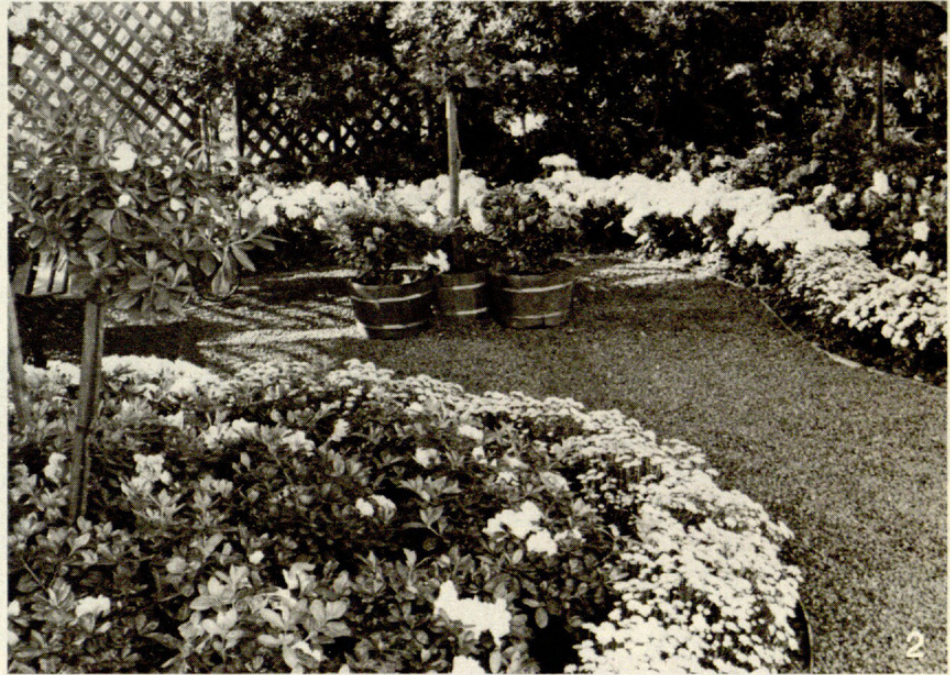
aging editor of *Sunset* magazine; John Clayton, author and staff member at the Royal Horticultural Society's garden at Wisley, Surrey, U.K.; Dr. Mildred Mathias, professor emerita of botany at UCLA; Rosemarie Head, secretary of the Southern California Landscape Contractors Association; and George Waters, editor of *Pacific Horticulture* magazine. Major winners were: California Rare Fruit Growers Association — Judges Award and Horticultural Society Educational; Protea from Shirl — Commercial Educational; California State Polytechnic University, Pomona — Education Institution; National Fuchsia Society — Horticultural Society Gar-

den Display; Weidner's Begonia Co. — Commercial Landscape Display; Flowerdale Nurseries — Landscape Display Individual Contractor; and Armstrong Garden Center — Commercial Plant Display.

Cliff Comstock of Monrovia Nursery headed the steering committee that spent months working out details of the show. Enthusiastic public response to their efforts encouraged show sponsors, members of the plant industry, the California Arboretum Foundation and the Los Angeles State and County Arboretum, to begin planning to make GARDEN SHOW 1983 the major flower show in the western United States.



1982



1. A dragon made of agave leaves lurks among the cactus.

2. Bush and tree azaleas transform even a small yard into a beautifully landscaped garden.

3. A raised bridge leads visitors through this garden display.

4. Plumes of pampas grass adorn the swan and white peacocks.

5. Bill and Helen Short's fantasy landscape of exotic ferns and tropical plants won the Best of Show award.

(Photos by William Aplin)



Colorful hanging baskets and potted plants surrounding a rose display attract visitors' attention.



A giraffe topiary surveys the exhibits outside of the Hall of Flowers.



Dried flowers and herbs surround a straw man and his lady.



1983. "Garden show 1982." *Garden* 7(1), 1-4.

View This Item Online: <https://www.biodiversitylibrary.org/item/155354>

Permalink: <https://www.biodiversitylibrary.org/partpdf/125112>

Holding Institution

Missouri Botanical Garden, Peter H. Raven Library

Sponsored by

Los Angeles Arboretum

Copyright & Reuse

Copyright Status: In copyright. Digitized with the permission of the rights holder.

License: <http://creativecommons.org/licenses/by-nc-sa/3.0/>

Rights: <https://www.biodiversitylibrary.org/permissions>

This document was created from content at the **Biodiversity Heritage Library**, the world's largest open access digital library for biodiversity literature and archives. Visit BHL at <https://www.biodiversitylibrary.org>.